

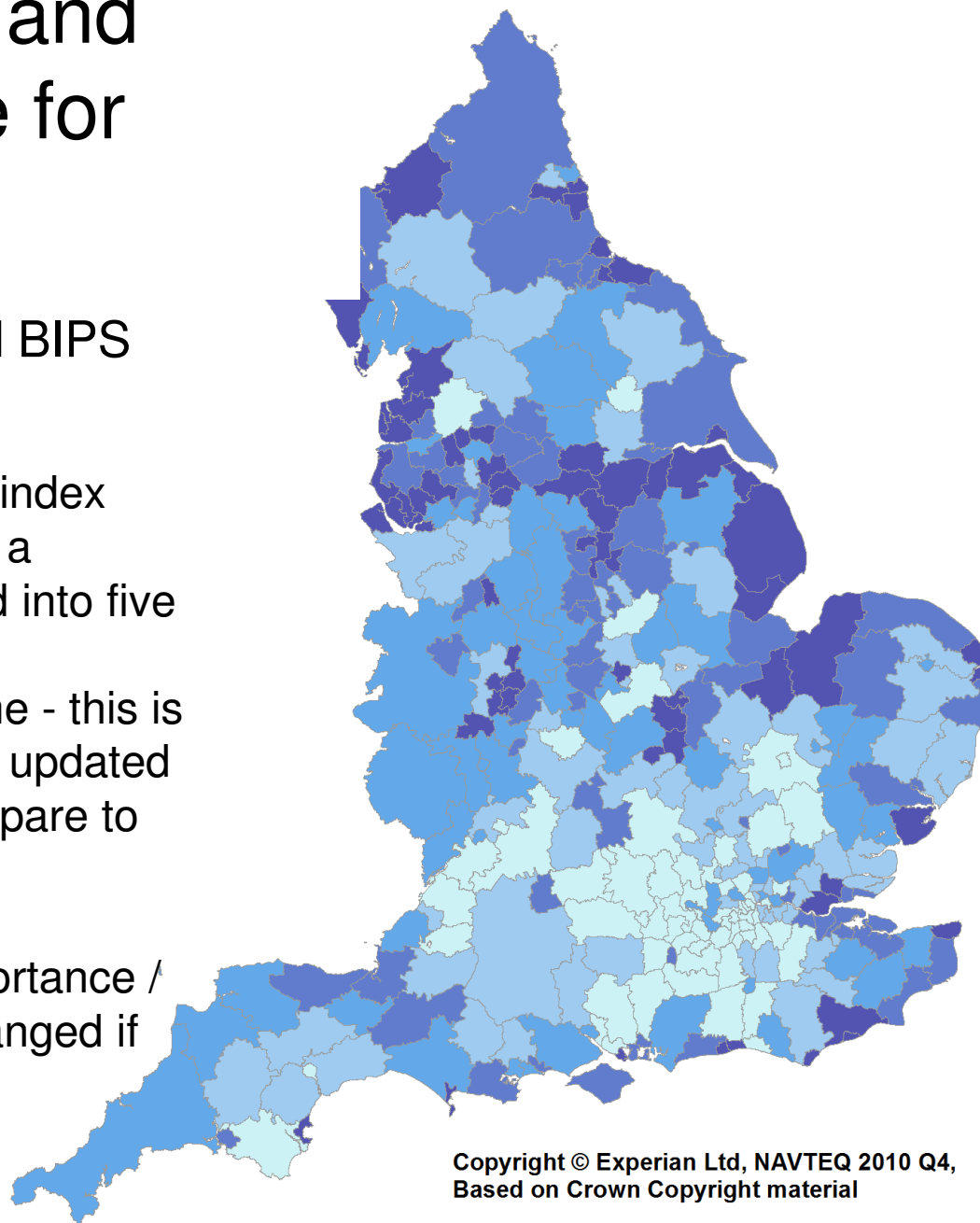
# Work in Partnership

“Help the people of Norfolk live in healthy places,  
promote healthy lifestyles; prevent ill-health; and reduce  
health inequalities”

# A summary health and wellbeing measure for Norfolk

Public Health Information and BIPS  
26/04/2017

- This is the 2017 edition of the index
- The index is a snapshot using a selection of indicators grouped into five domains
- The index will change over time - this is the second year, 65 indicators updated
- The index shows how we compare to different areas
- A starter for discussion
- Each indicator is of equal importance / equal weight – this can be changed if required



Copyright © Experian Ltd, NAVTEQ 2010 Q4,  
Based on Crown Copyright material

# Why?

“...the development of an overarching indicator to understand the wellbeing of the people of Norfolk, their quality of life and if it is improving... something that encompasses things like: health; crime levels; pollution; house prices; educational outcomes; wages and others.”



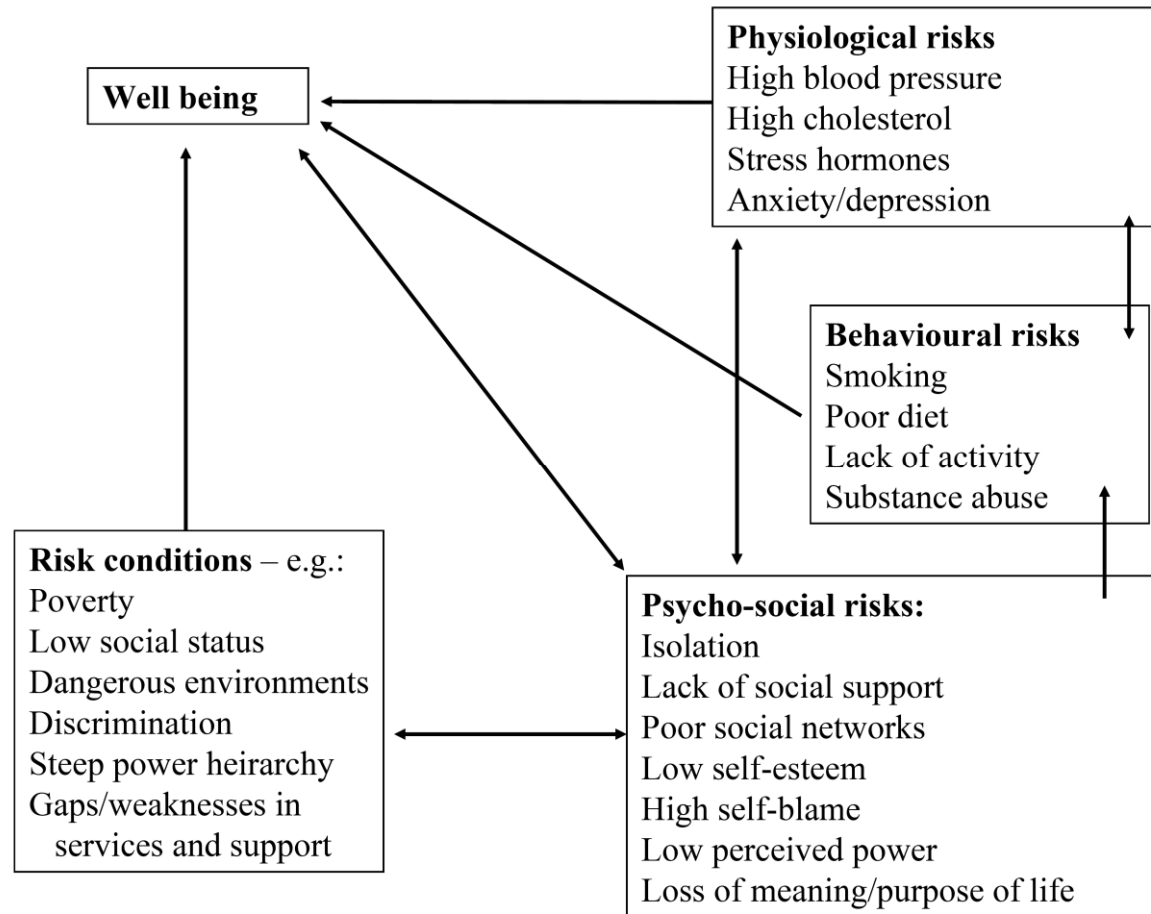
“...what is life like for the people of Norfolk?”

“Raise our expectations, improve our outcomes”

“Investing in tomorrow’s wellbeing starts today but we need to know where to focus”

# What influences quality of life, health and wellbeing

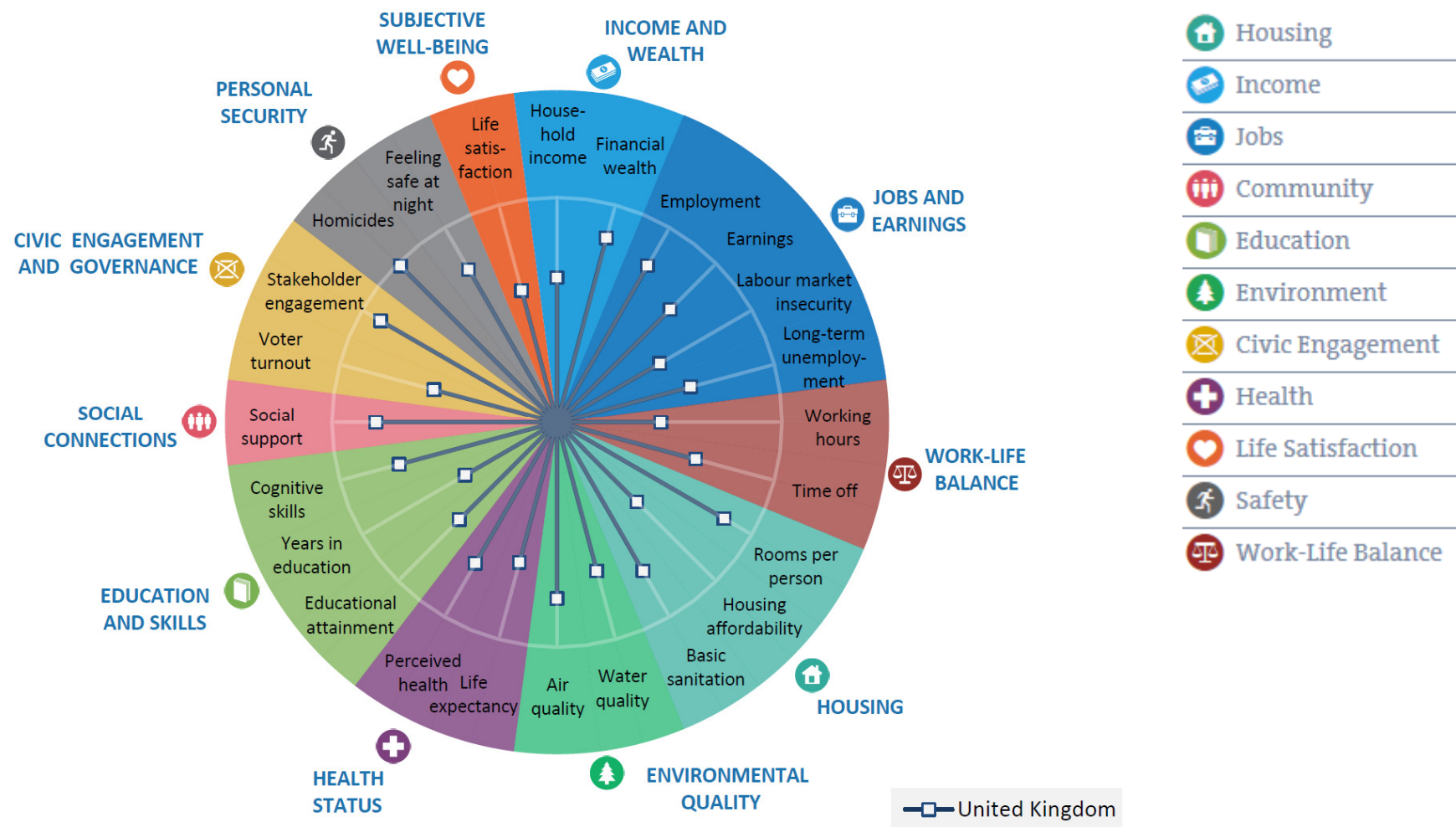
What is the potential impact of not preventing and/or addressing certain problems or not intervening early enough (preventable disease, physical conditions, self esteem and bullying, problems that may not present until adulthood)?



**Health Inequalities support programme**

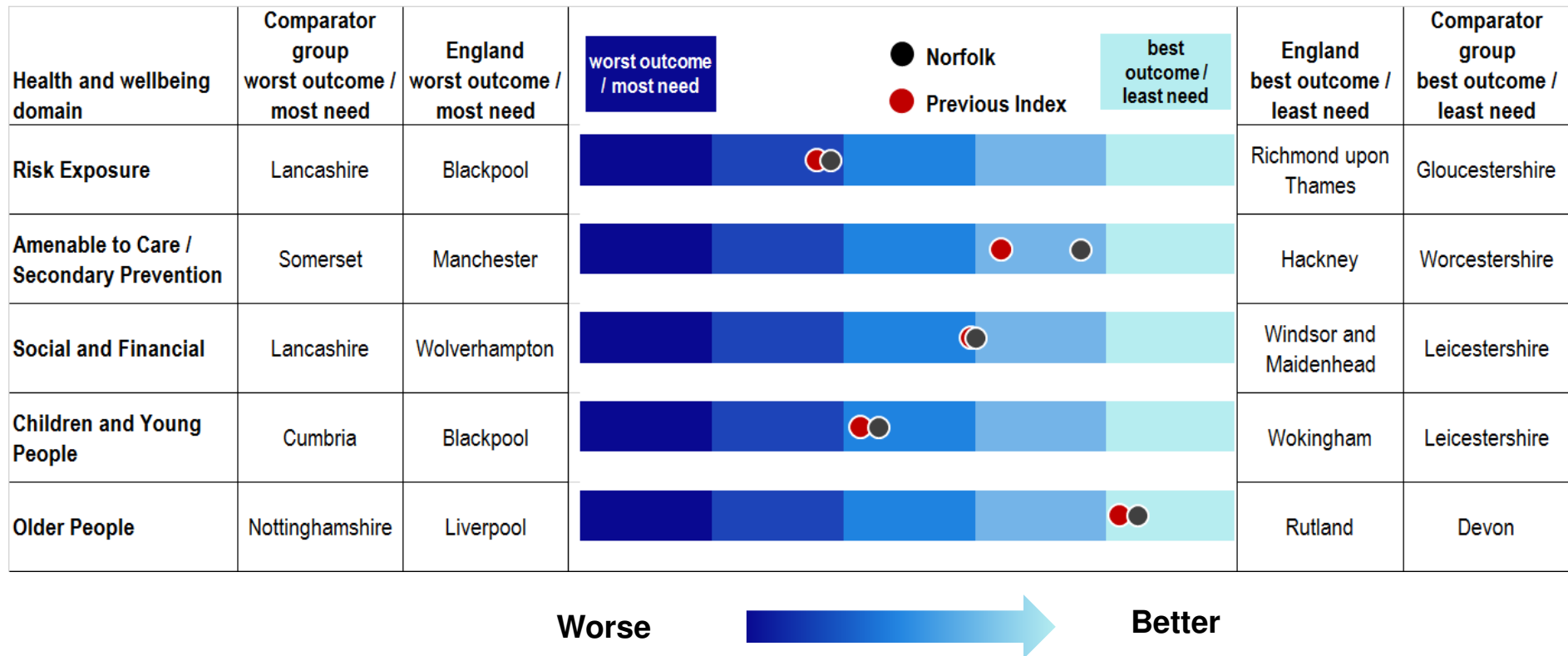
[http://www.dh.gov.uk/en/Publicationsandstatistics/Publications/PublicationsPolicyAndGuidance/DH\\_115113](http://www.dh.gov.uk/en/Publicationsandstatistics/Publications/PublicationsPolicyAndGuidance/DH_115113)

# OECD Better Life Initiative

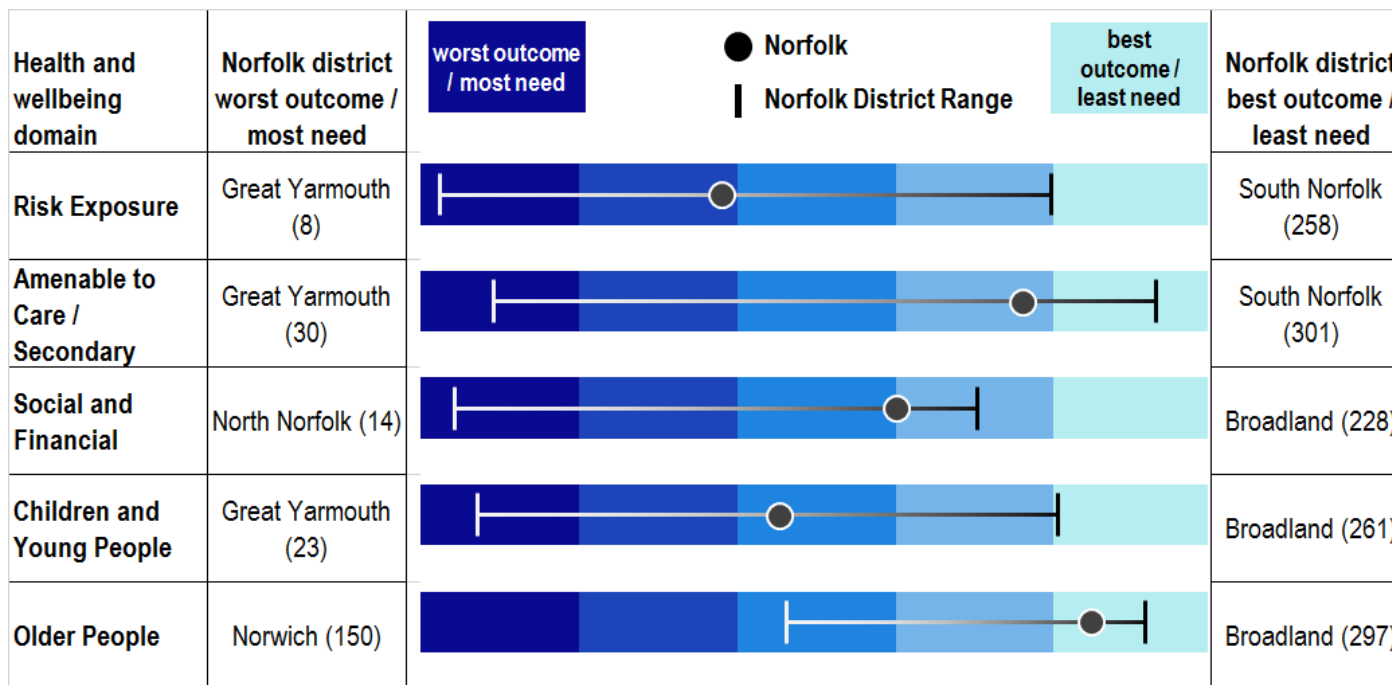


<http://www.oecd.org/statistics/Better-Life-Initiative-2016-country-notes-data.xlsx>

# The domains – how Norfolk compares to elsewhere in England



# The domains – the range across Norfolk localities

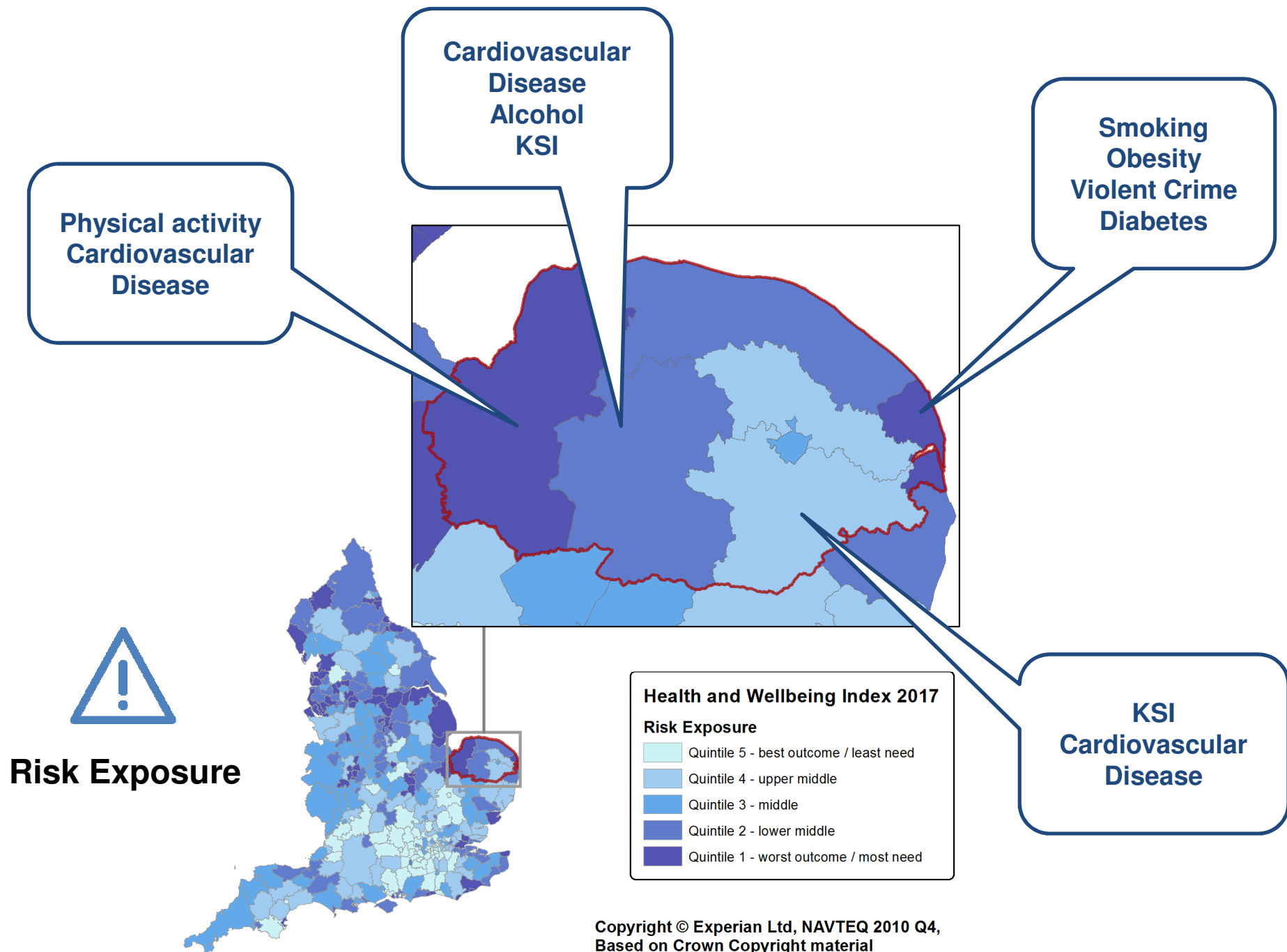


Worse  Better

So what? How can this be  
used?



Priorities: some shared, some  
locality specific.

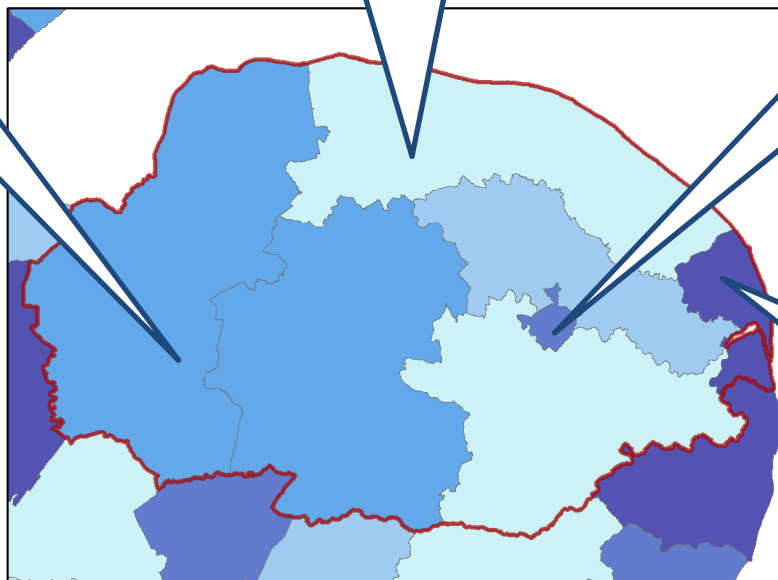


**ACS Admissions  
Stroke Risk**

**Stroke Risk  
ACS Admissions**

**ACS Admissions  
Preventable Deaths  
Managing Blood  
Pressure**

**Stroke Risk  
Managing Blood  
Pressure  
Preventable Deaths**

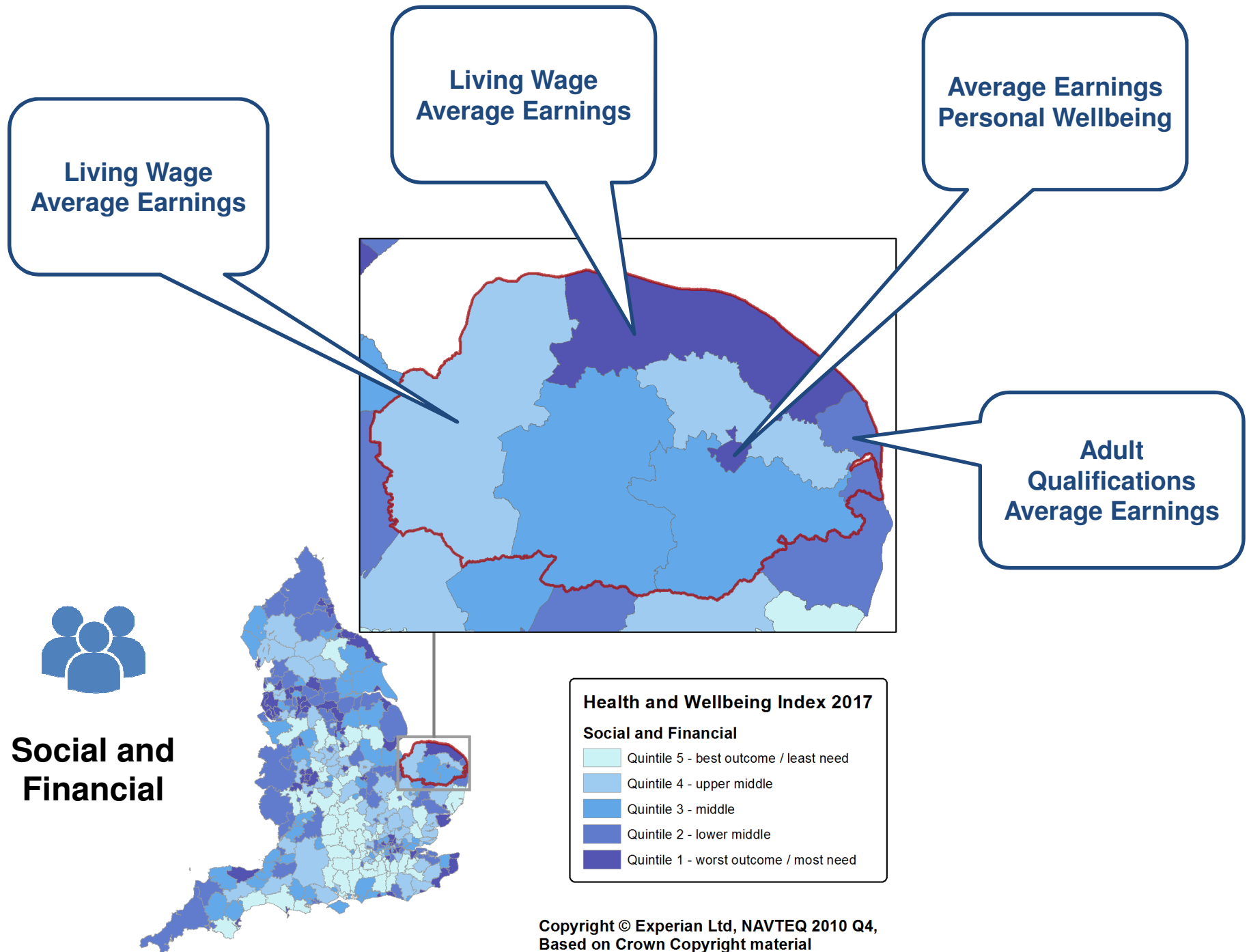


**Amenable To Care**

**Health and Wellbeing Index 2017**

**Amenable To Care / Secondary Prevention**

- Quintile 5 - best outcome / least need
- Quintile 4 - upper middle
- Quintile 3 - middle
- Quintile 2 - lower middle
- Quintile 1 - worst outcome / most need



**GCSE Attainment  
Infant Deaths  
Excess Weight 4-5**

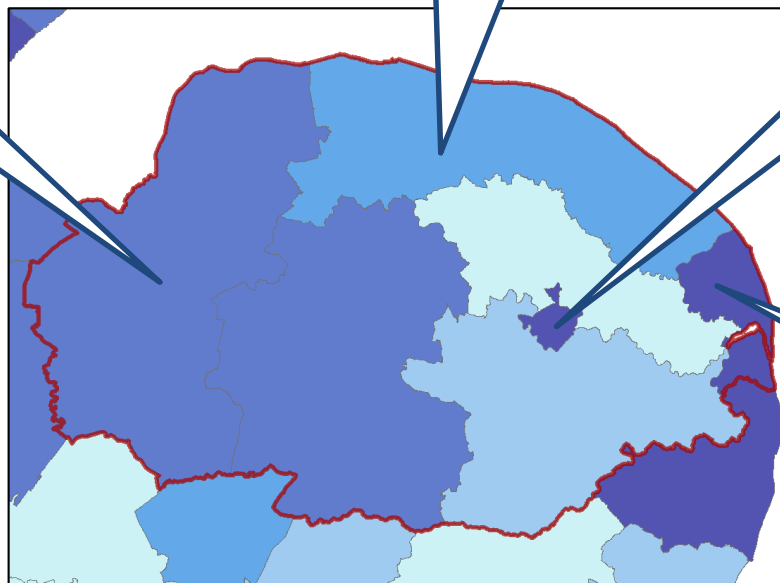
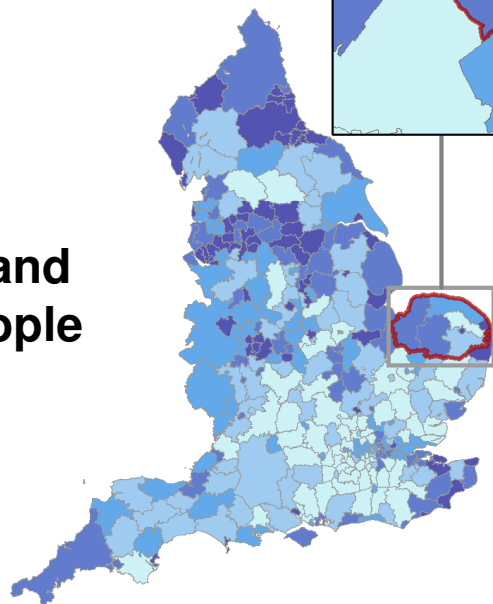
**Injuries  
GCSE Attainment  
Pupil Absence**

**GCSE Attainment  
Teen Pregnancy  
Children In Poverty**

**Excess Weight 4-5  
GCSE Attainment  
Smoking In  
Pregnancy**



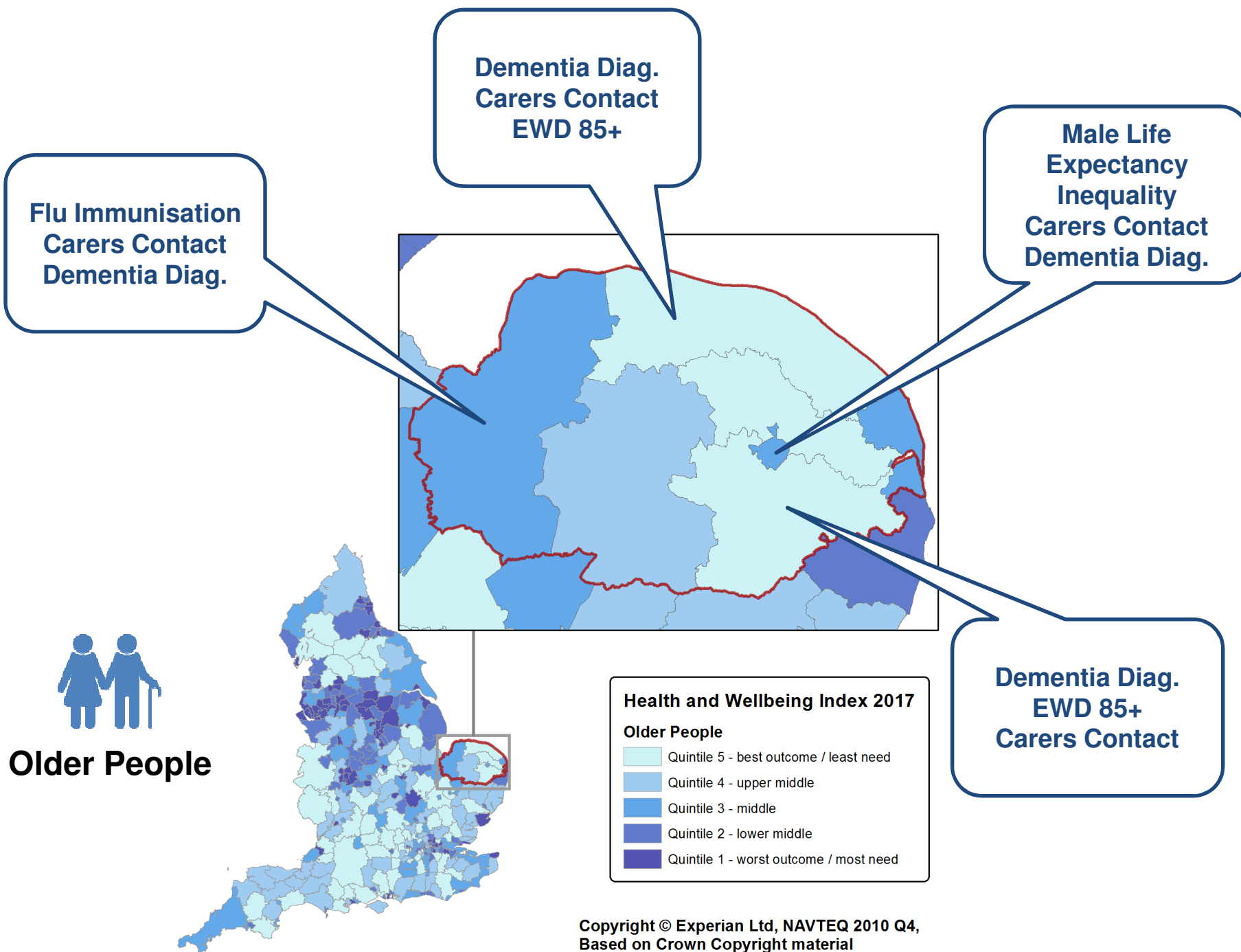
**Children and  
Young People**



**Health and Wellbeing Index 2017**

**Children and Young People**

- Quintile 5 - best outcome / least need
- Quintile 4 - upper middle
- Quintile 3 - middle
- Quintile 2 - lower middle
- Quintile 1 - worst outcome / most need



The difference we can make to the  
Health and Wellbeing of the Norfolk  
population.



# Reducing the number killed and seriously injured on our roads

In Norfolk **44 per 100,000** KSI per year 2013-2015



Norfolk currently **in lower third in the country** in this index, and **worse** than last year

**What if we were the same as our best comparator (Staffordshire, 23 per 100,000)?**  
202 KSI per year in Norfolk, **avoiding 185** KSI per year

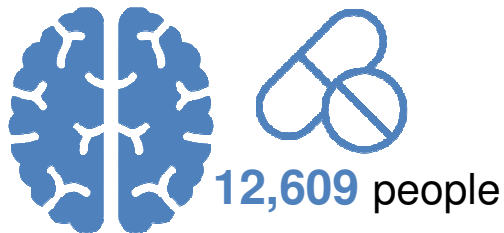
**What if we were the same as the England average (Derby, 34 per 100,000)?**  
298 KSI per year in Norfolk, **avoiding 87** KSI per year





# Reducing the risk of stroke in our population

In Norfolk about **75%** of patients who could have treatment receive treatment to reduce risk of stroke QOF 2015/16



Norfolk currently **in lower third in the country** in this index, but **better** than last year

**What if we were the same as our best comparator (Lincolnshire, 83% of patients treated)?**

An **additional 1,344** patients in Norfolk receiving treatment to reduce risk of stroke

**What if we were the same as the England average (Worcestershire, 78% of patients treated)?**

An **additional 340** patients in Norfolk receiving treatment to reduce risk of stroke



# Increasing average earnings in Norfolk



In Norfolk there are about 444,200 economically active people

In Norfolk **50%** of people who work earned less than **£380** per week in 2016

Norfolk currently **lowest 10% in the country** in this index, but **better** than last year

**What if we were the same as our best comparator (Warwickshire, £469)?**

The average wage would increase by an **additional £89** per week

**What if we were the same as the England average (Cheshire West and Chester, £429)?**

The average wage would increase by an **additional £49** per week



# Improving educational attainment for our children and young people

In Norfolk about **55%** of young people achieved 5 A\*-C including Maths and English. 2015/16



**4,347**  
young people

Norfolk currently **in lower third in the country** in this index, and **not as good as** last year

**What if we were the same as our best comparator (Warwickshire, 62%)?**

An **additional 581** young people in Norfolk with better GCSE attainment,

**What if we were the same as the England average (Enfield, 58%)?**

An **additional 283** young people in Norfolk with better GCSE attainment



# Improving outcomes for those with Dementia

In Norfolk about **60%** of the people we expect to have dementia have a diagnosis. QOF 2015/16

**What if we were the same as our best comparator (Nottinghamshire, 73%)?**

An **additional 1,900** people in Norfolk with a diagnosis



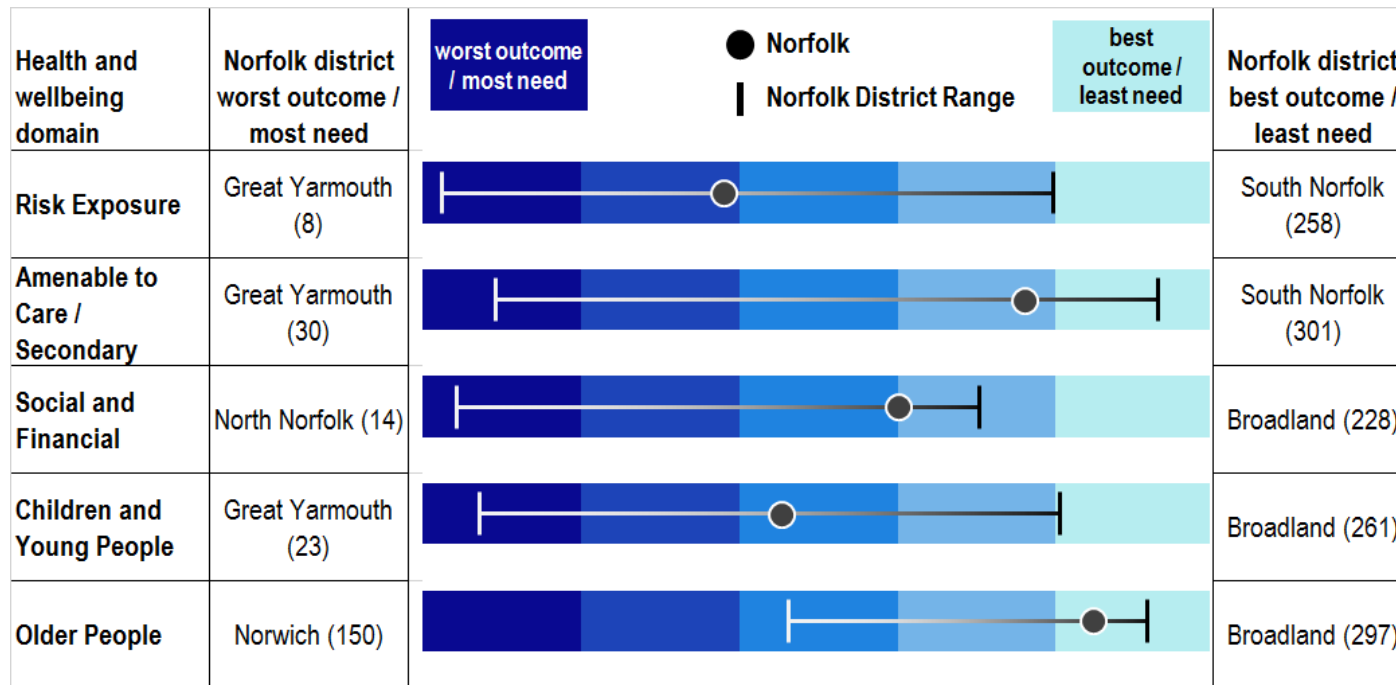
**8,212**  
people

**What if we were the same as the England average (Enfield, 67%)?**

An **additional 1,130** people in Norfolk with a diagnosis

Norfolk currently **in the lower fifth in the country** in this index, but **better** than last year

# So this is where we are ...



# ... where do we want to be?

# Thank you for listening

For further information contact

[tim.winters@norfolk.gov.uk](mailto:tim.winters@norfolk.gov.uk)

For online visualisation and further exploration of the index

[Online Health and Wellbeing Index](#)

Health and wellbeing.  
What is our expectation  
for Norfolk people?