

Planning (Regulatory) Committee

23 April 2021

Applications Referred to Committee for Determination

**Provision of a replacement 2 class base modular building for a temporary period of 5 years. Associated works include external lighting and provision of 6no car parking spaces.
(Norfolk County Council, Children's Services)**

Officer Contact – Angelina Lambert (01603 223806) / Yeukai Magundani (01603 222759)

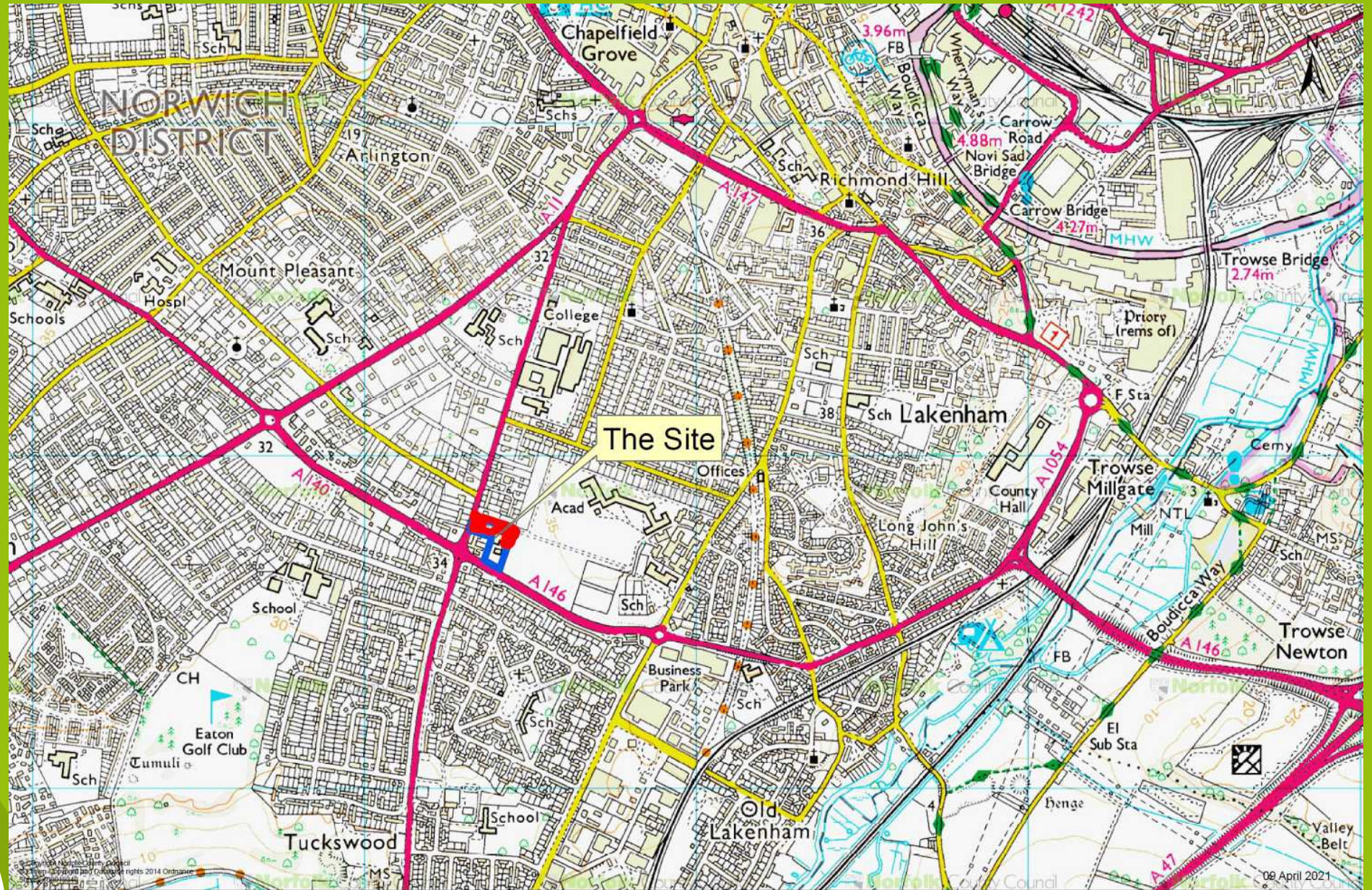
Planning (Regulatory) Committee

23 April 2021

Planning Update

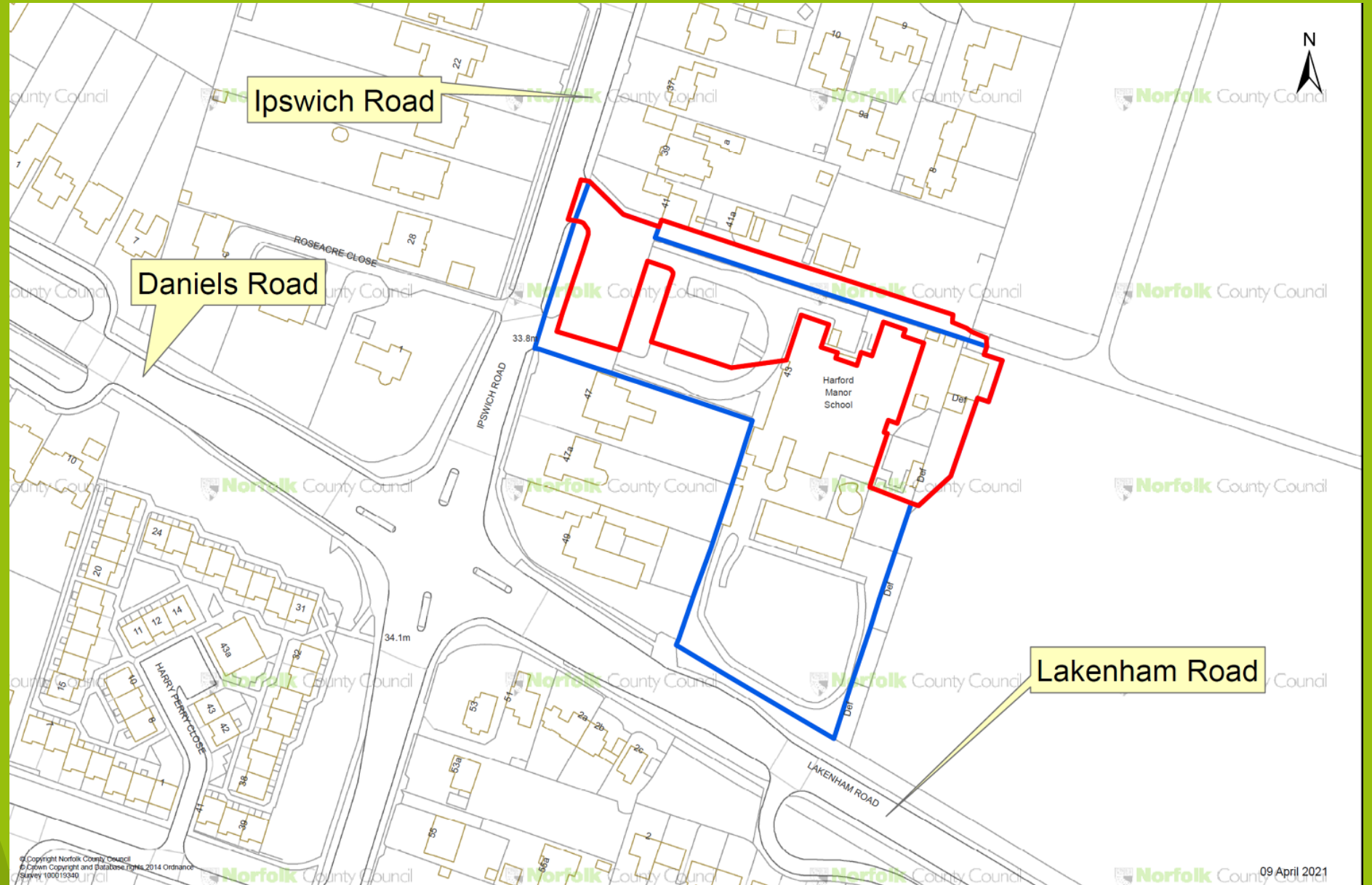
Since the drafting and publishing of the committee report Norwich City Council remove their objection.

Location Plan



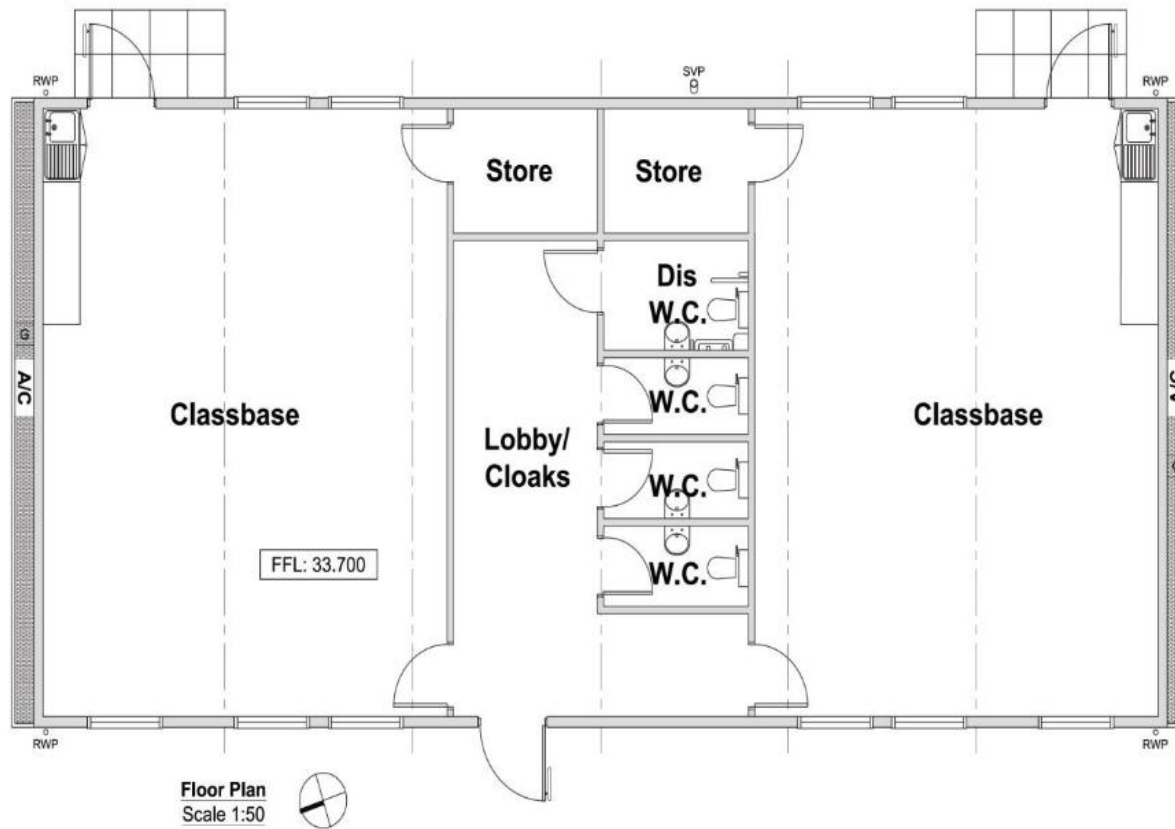
Norfolk
County Council

Site Plan



[illegible]

Proposed Floor and Roof Plans



Materials

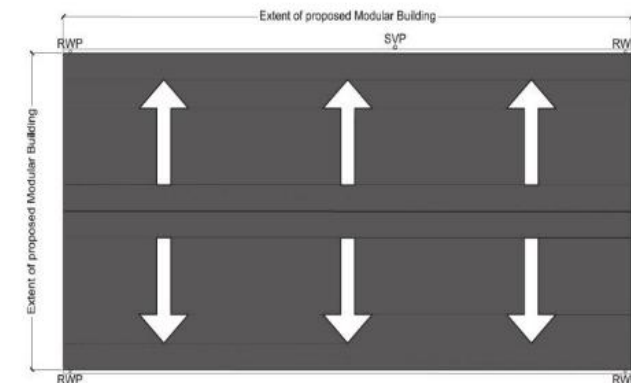
- 1 - High performance Mineral Felt Roof Covering. Colour - Green
- 2 - uPVC Gutters & Downpipes. Colour - Black
- 3 - External Light
- 4 - Air Conditioning Unit with black caging
- 5 - Double Glazed uPVC Windows Colour - White
- 6 - Plastisol Coated Steel Bonded to Plywood Panels - Dobel 200XT Colour - 12B21 (Moorland Green)
- 7 - Composite steel door set - Dobel 200XT - Colour BS18B25 (Merlin Grey)
- 8 - uPVC Soil Vent Pipe. Colour - Black
- 9 - Emergency Bulkhead Light Fitting
- 10 - Boyco Door Restrainer - Colour: Blue (RAL 5010)

Fascias & Trims: Plastisol coated steel bonded to plywood panels - Dobel 200XT - Colour 12B21 (Moorland Green)

External Lighting: Wall Mounted Luminaire positioned approx. 2.1 metres above ground level. Luminaire hooded to prevent upward light pollution with clock/photo cell controls.

Roof Plan

Scale 1:100



Proposed Roof Materials

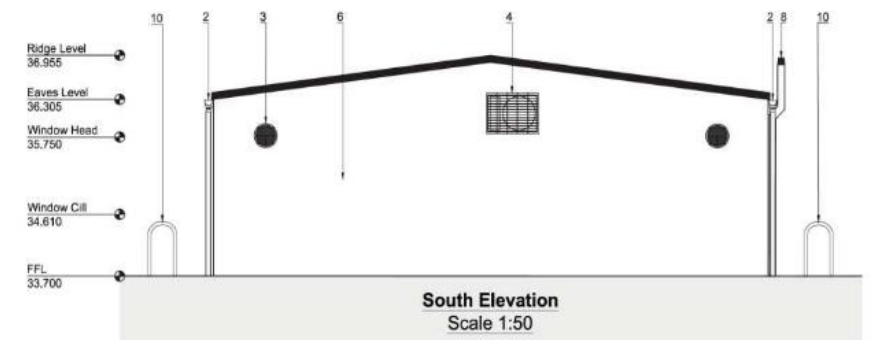
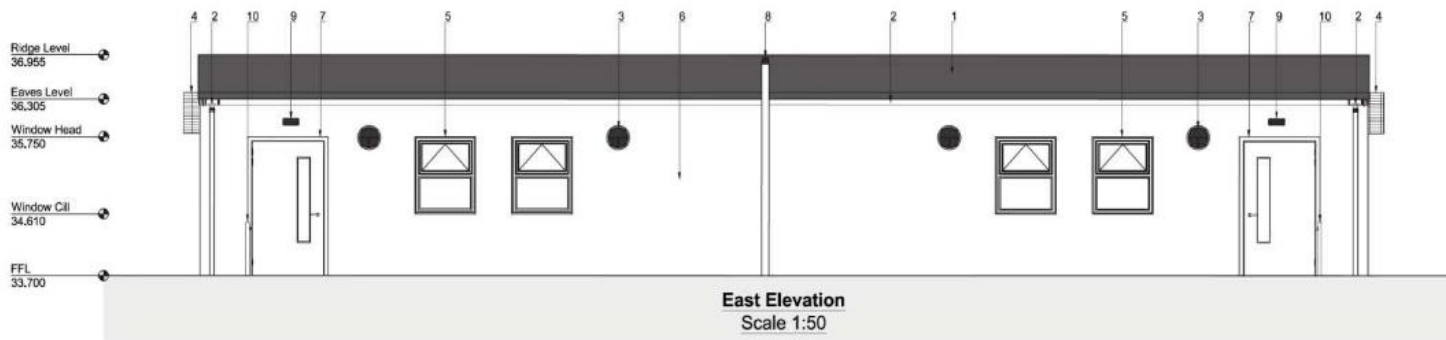
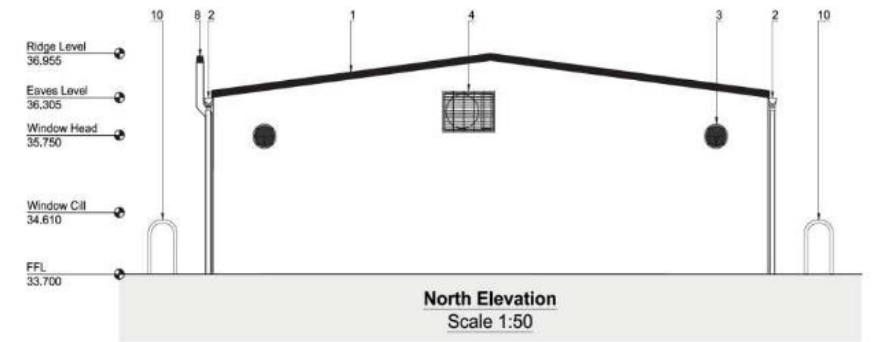
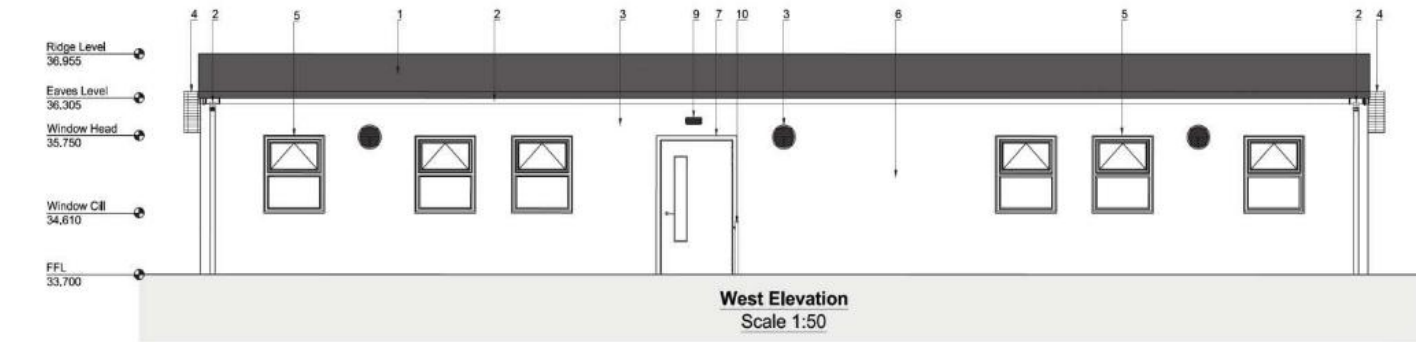
Roof: High performance mineral felt.

Gutters & RWP's: Black - PVC (100mm half-round gutters & 68mmØ downpipes).

Surface Water Disposal

Proposed surface water drainage connected to new attenuation tank.

Proposed Elevations



View from the school site access towards the landscaped area where the 6no parking spaces are proposed



Landscaped area where the 6no. additional car parking spaces are proposed. The Plum tree in this photograph is to be removed



Existing mobile located along the Eastern boundary of the school site to be replaced



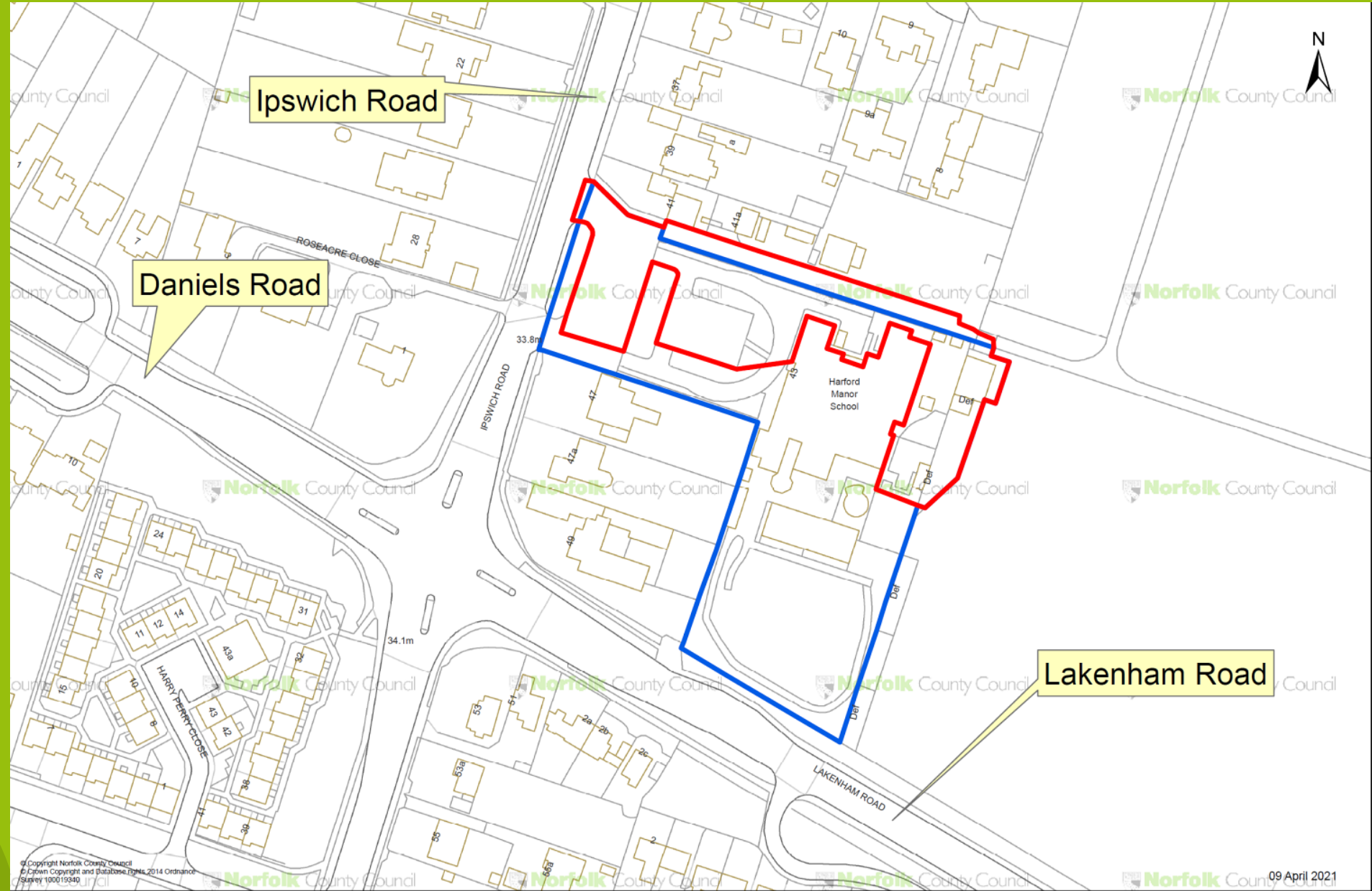
Existing mobile viewed from the Hewitt School playing field



View from the Eastern boundary towards the Hewitt School playing fields



Site Plan



Recommendation:

That the Executive Director of Community and Environmental Services be authorised to:

- I. Grant planning permission subject to the conditions outlined in section 11.**
- II. Discharge conditions where those detailed above require the submission and implementation of a scheme, or further details, either before development commences, or within a specified date of planning permission being granted.**
- III. Delegate powers to officers to deal with any non-material amendments to the application that may be submitted.**