



Norwich Castle
Royal Palace Reborn

Behind the Hoardings

Hannah Jackson - Project Manager





Norwich Castle

Royal Palace Reborn

Royalty Revealed

We're re-creating the palace
of Norman Kings – one of
Medieval Europe's
most important buildings

Medieval Treasure

The British Museum's first
Medieval gallery outside London
will bring treasures of international
importance to Norwich

The People's Palace

For the first time in 900 years
everyone will be able to explore
all 5 levels of the Keep
– from basement to battlements

Keep Learning

Over 5 years of
events and activities
will open up the Medieval world
to all ages

A Jewel in the Crown

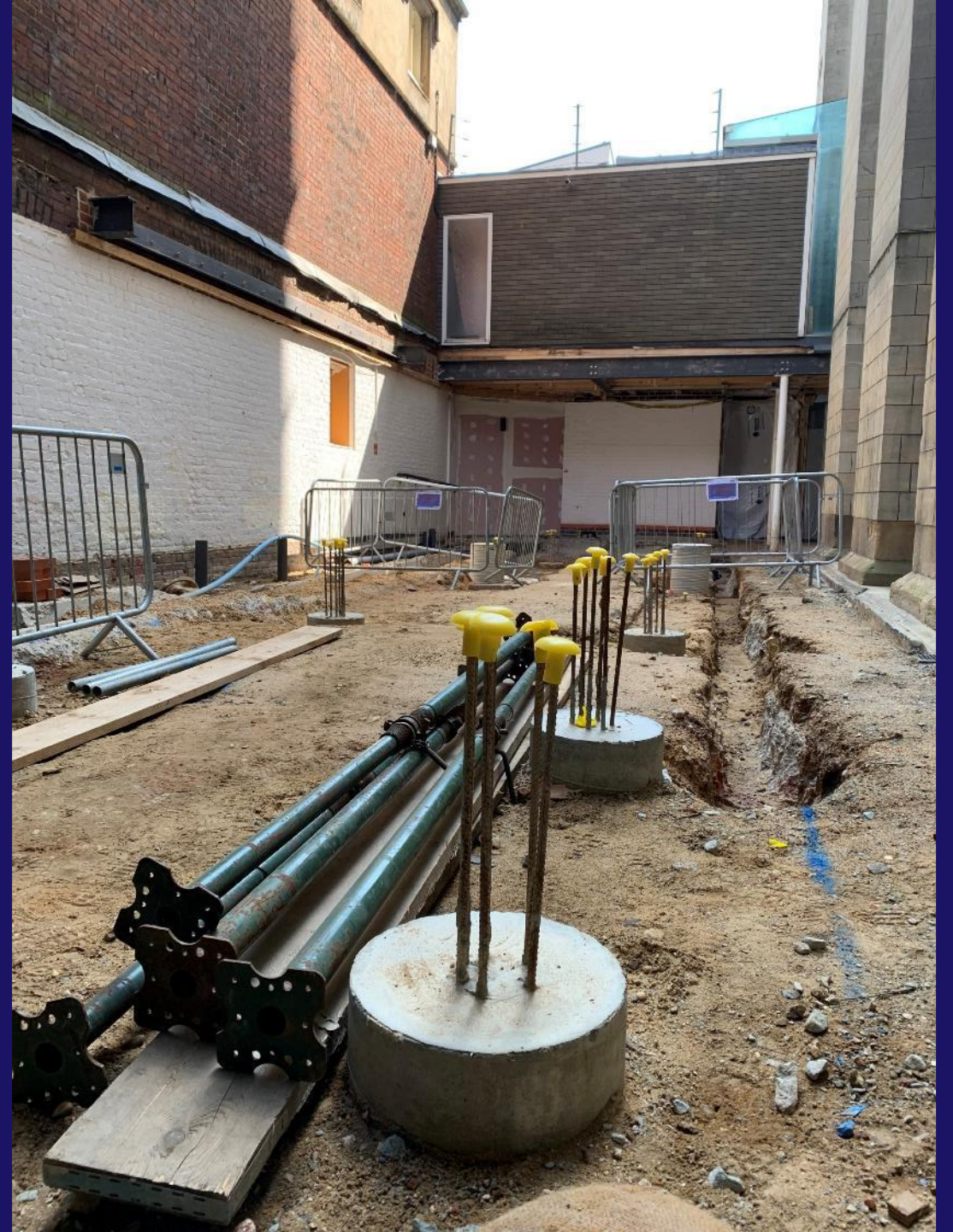
Norwich Castle
will take its place as
one of the UK's premier
heritage attractions





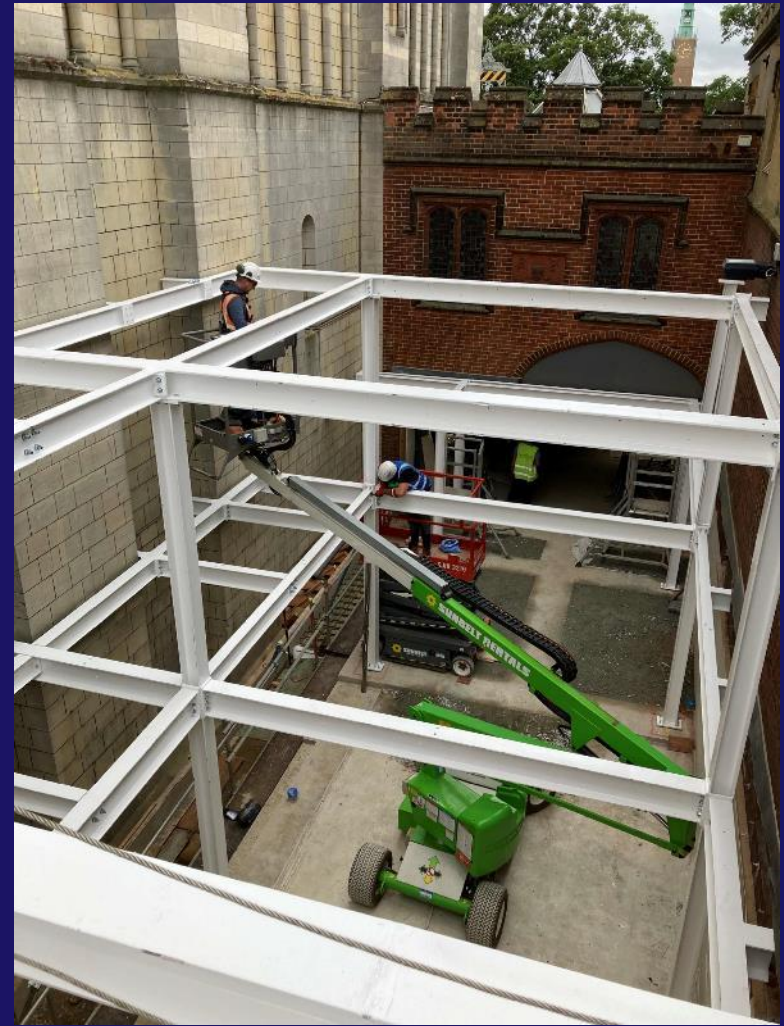






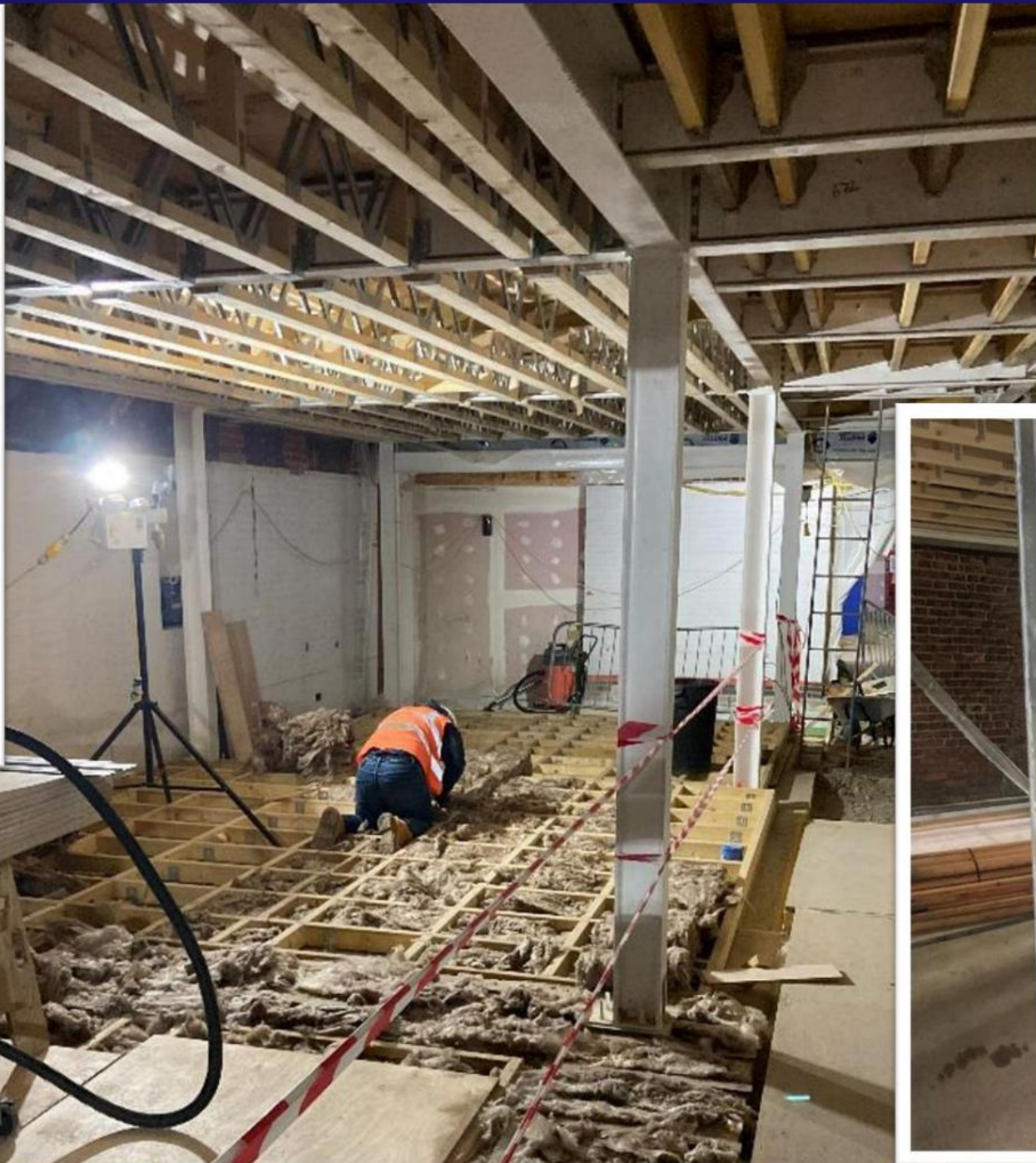


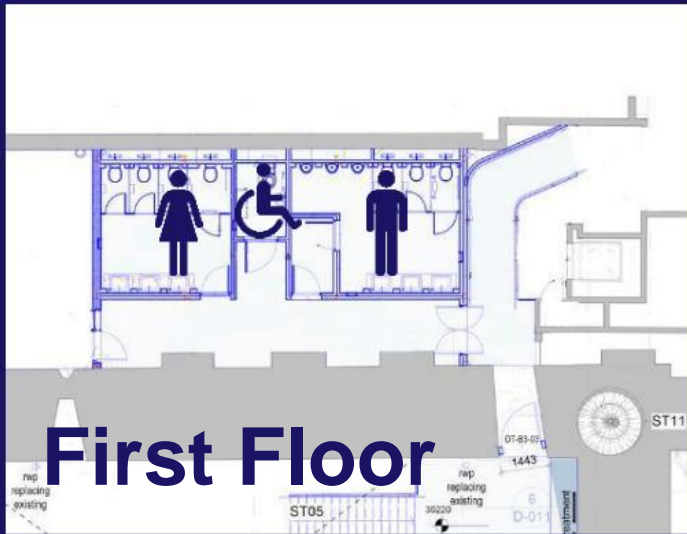




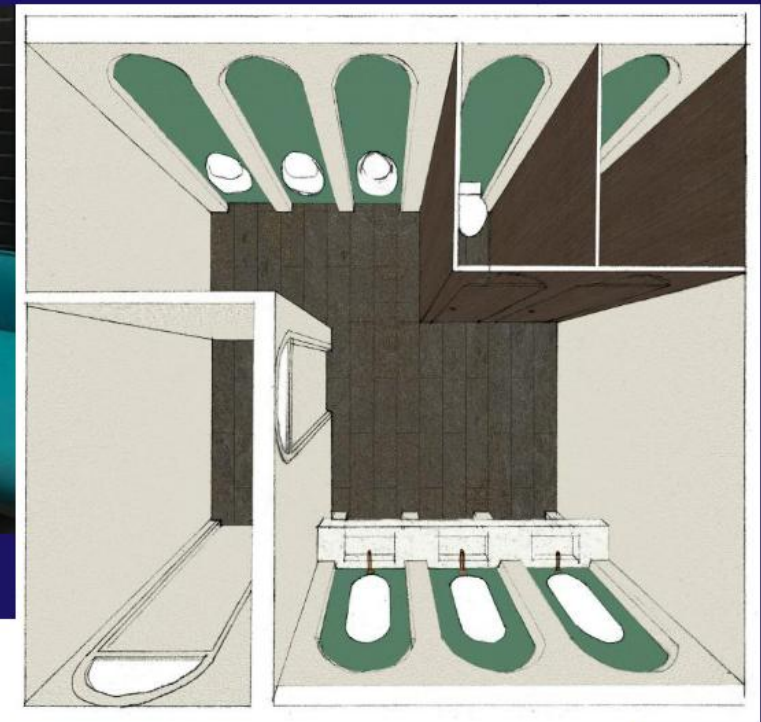








First Floor



Ground Floor

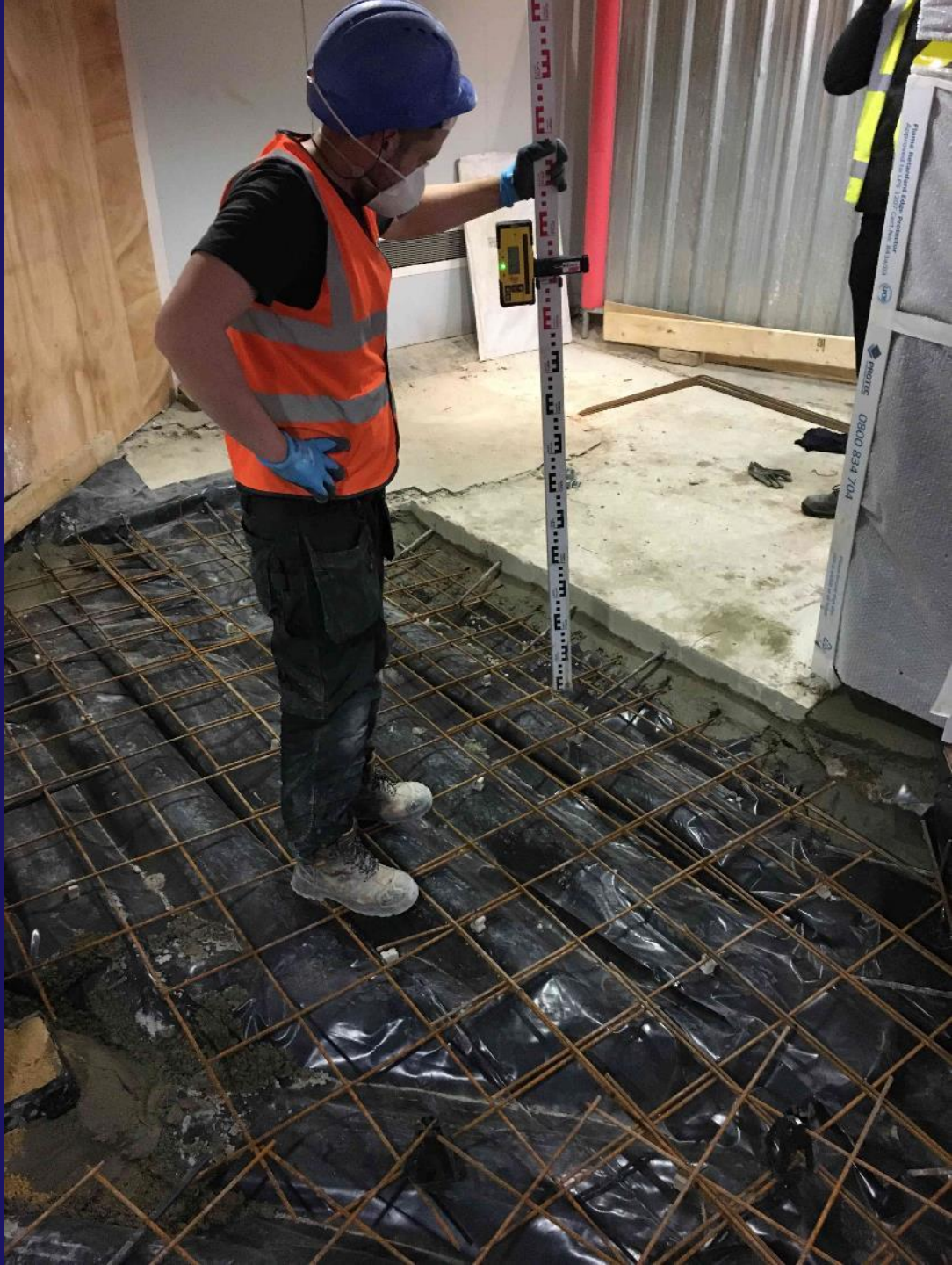


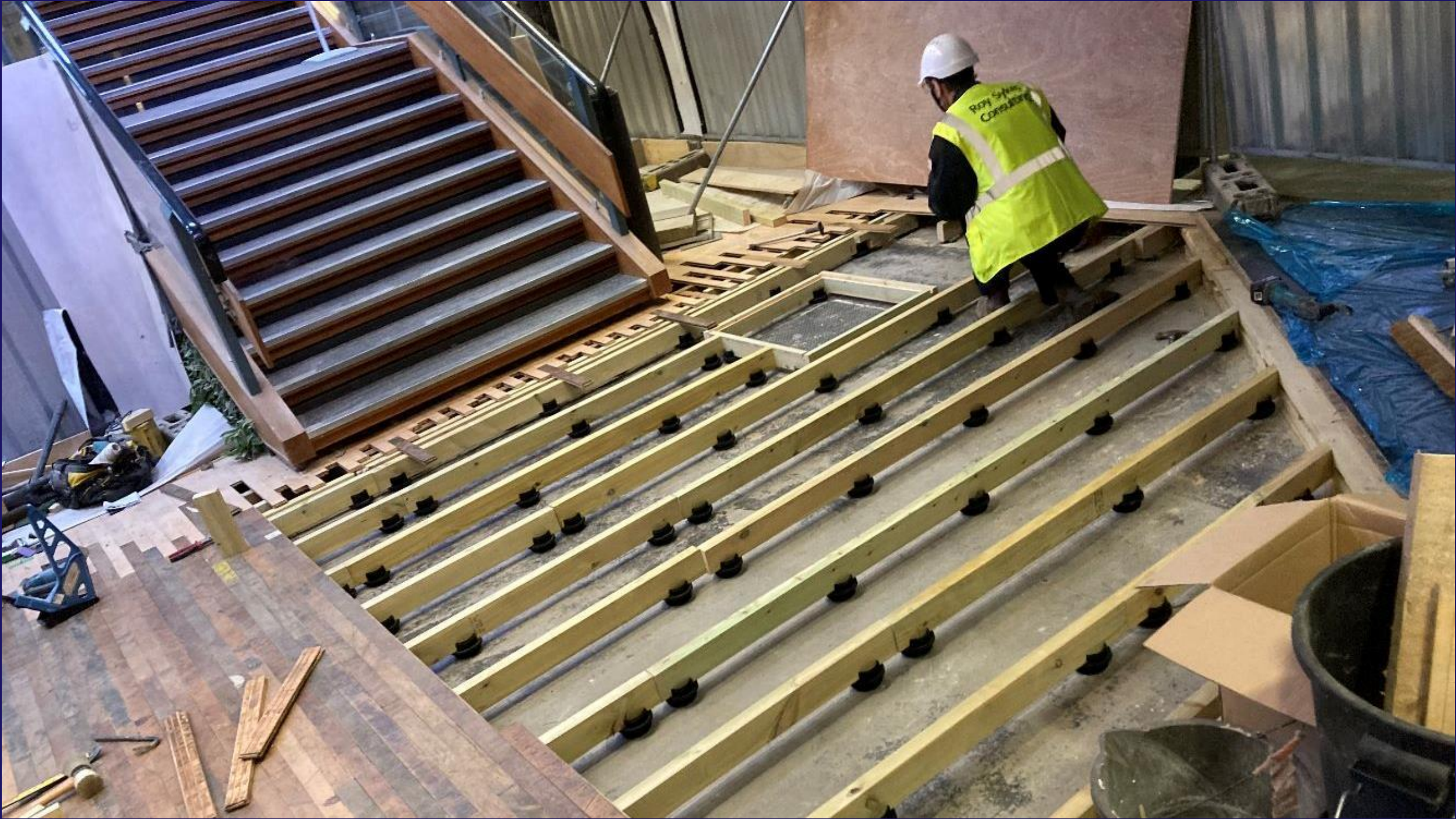






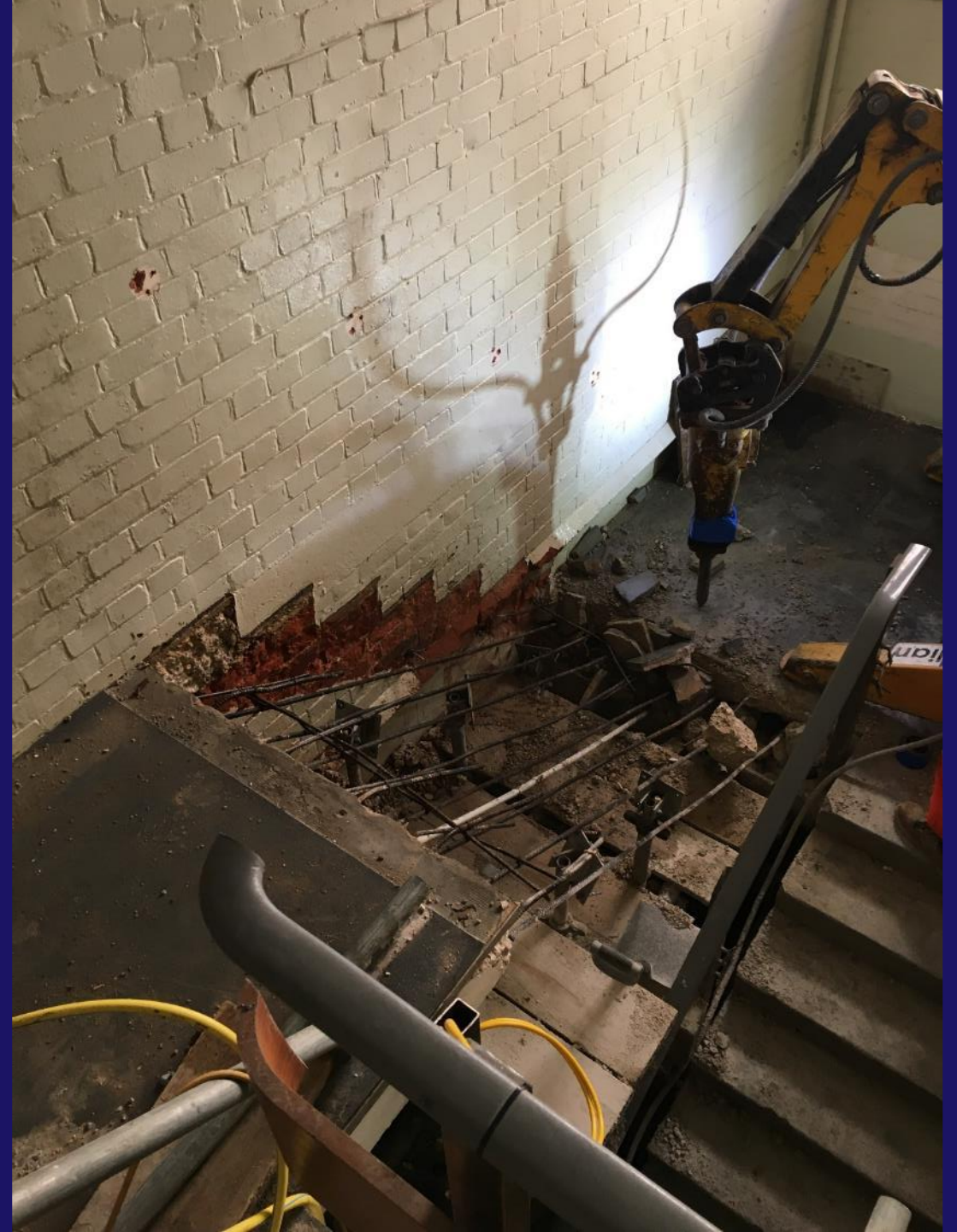
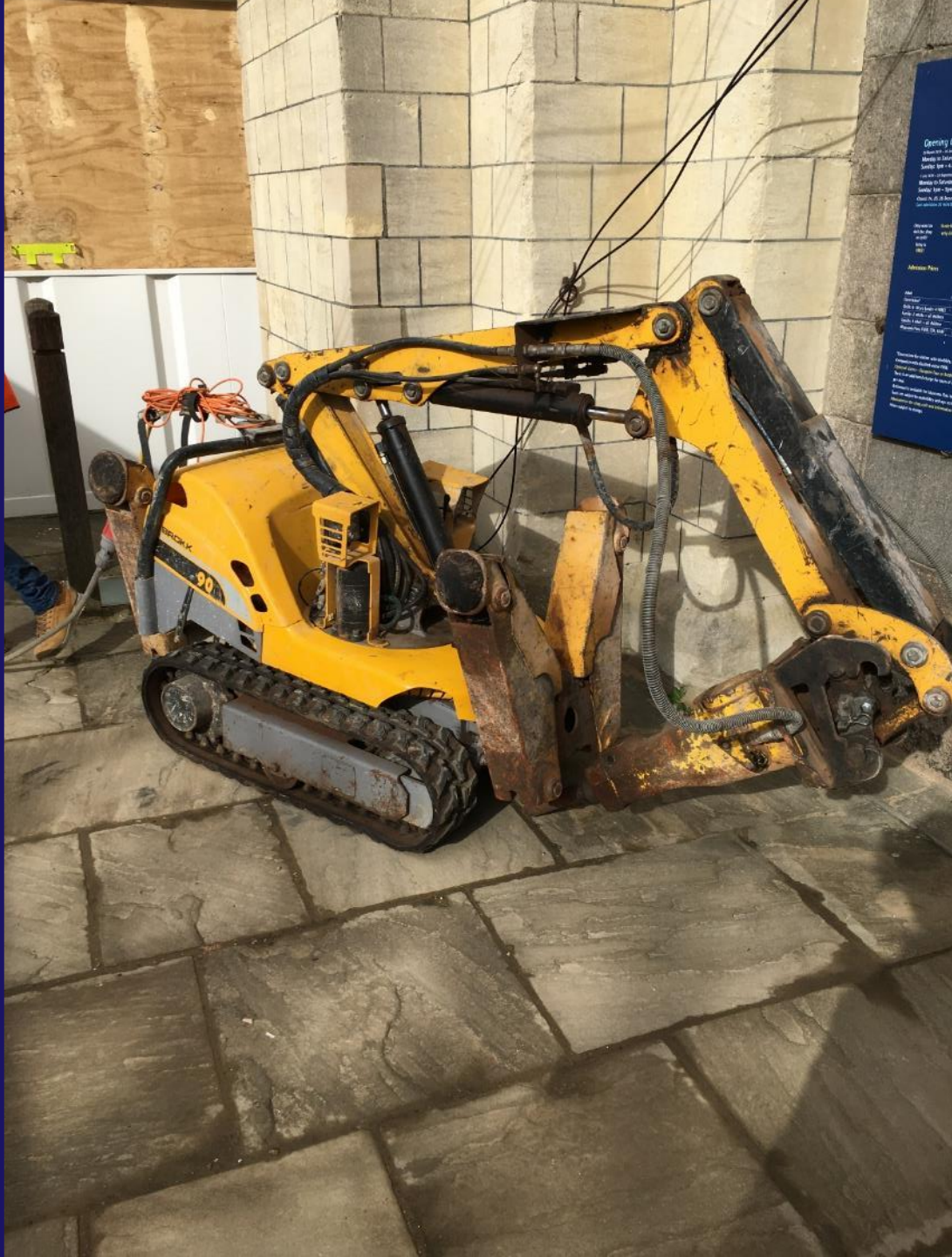










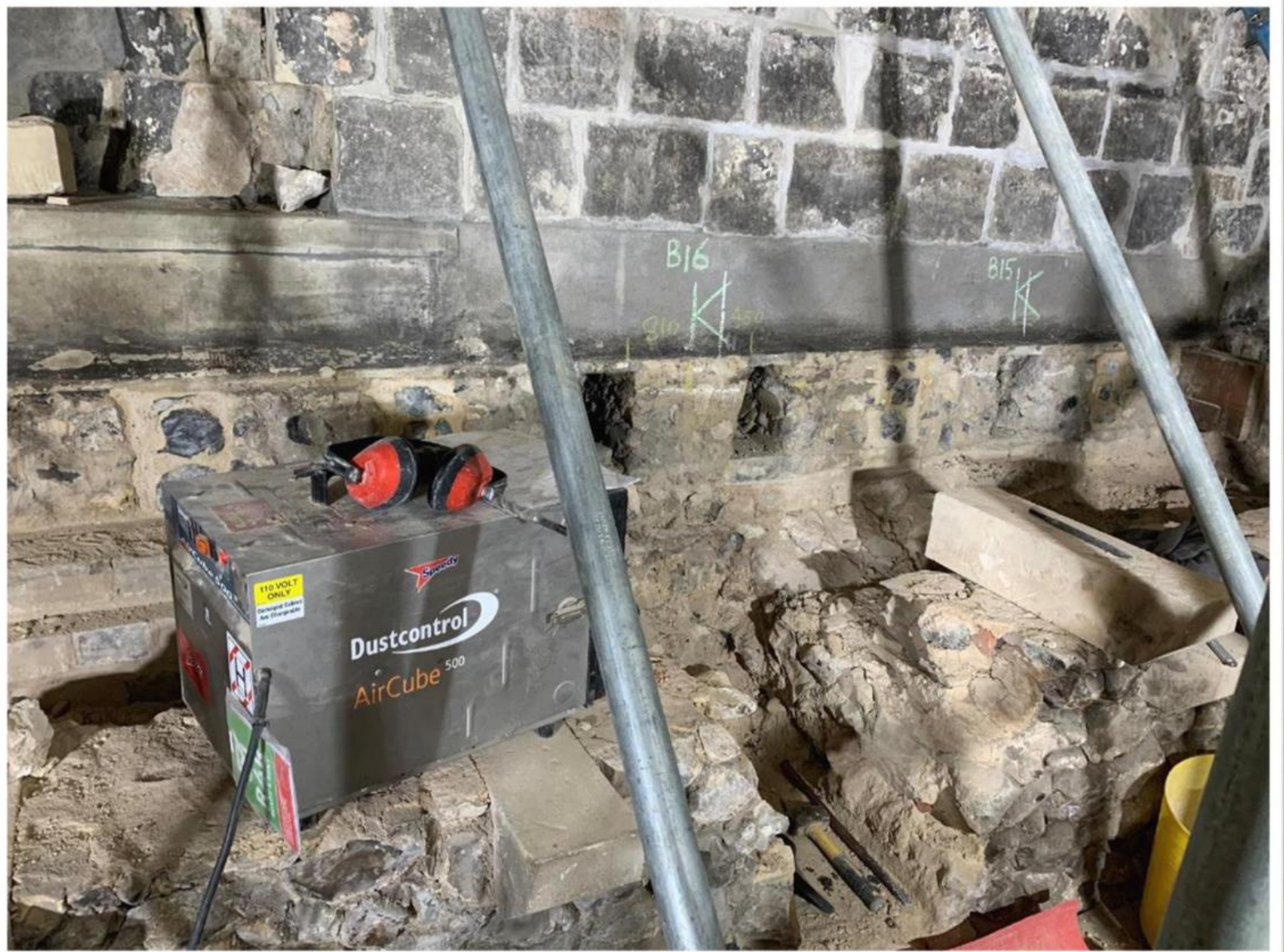


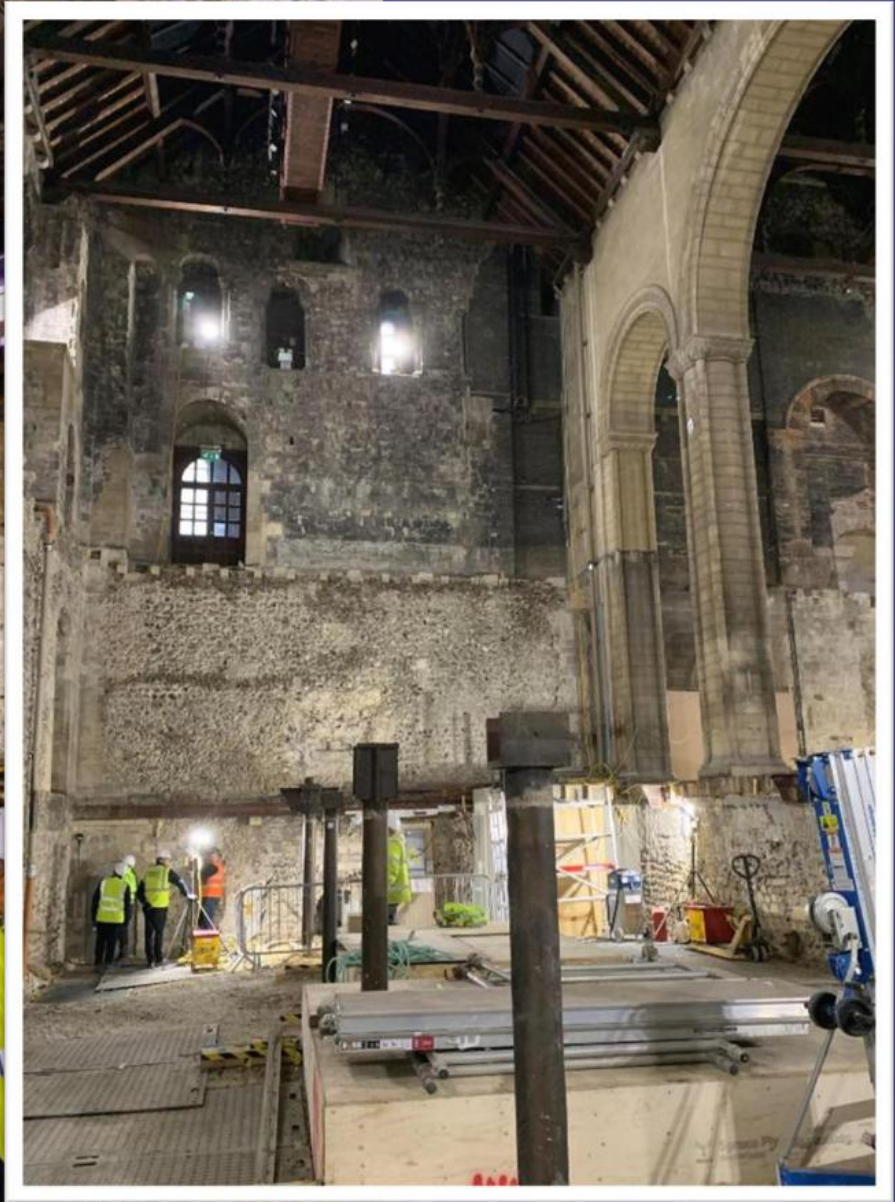


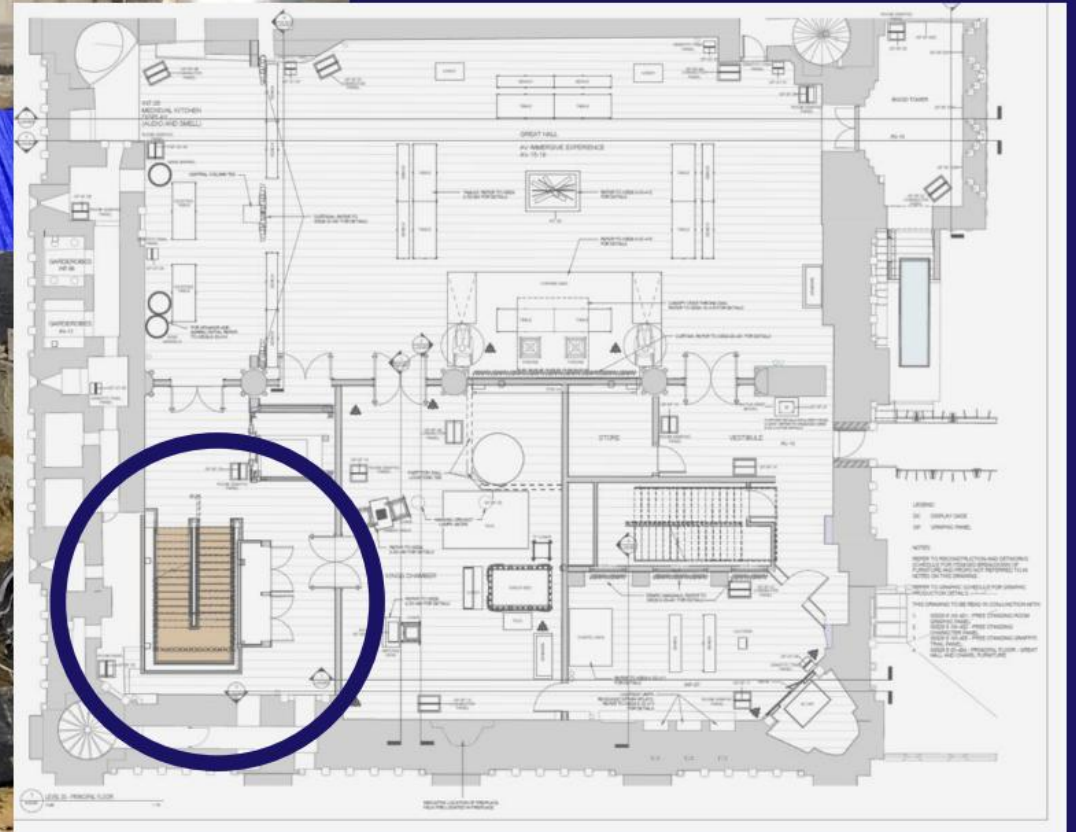
◀ View from existing staircase ▶

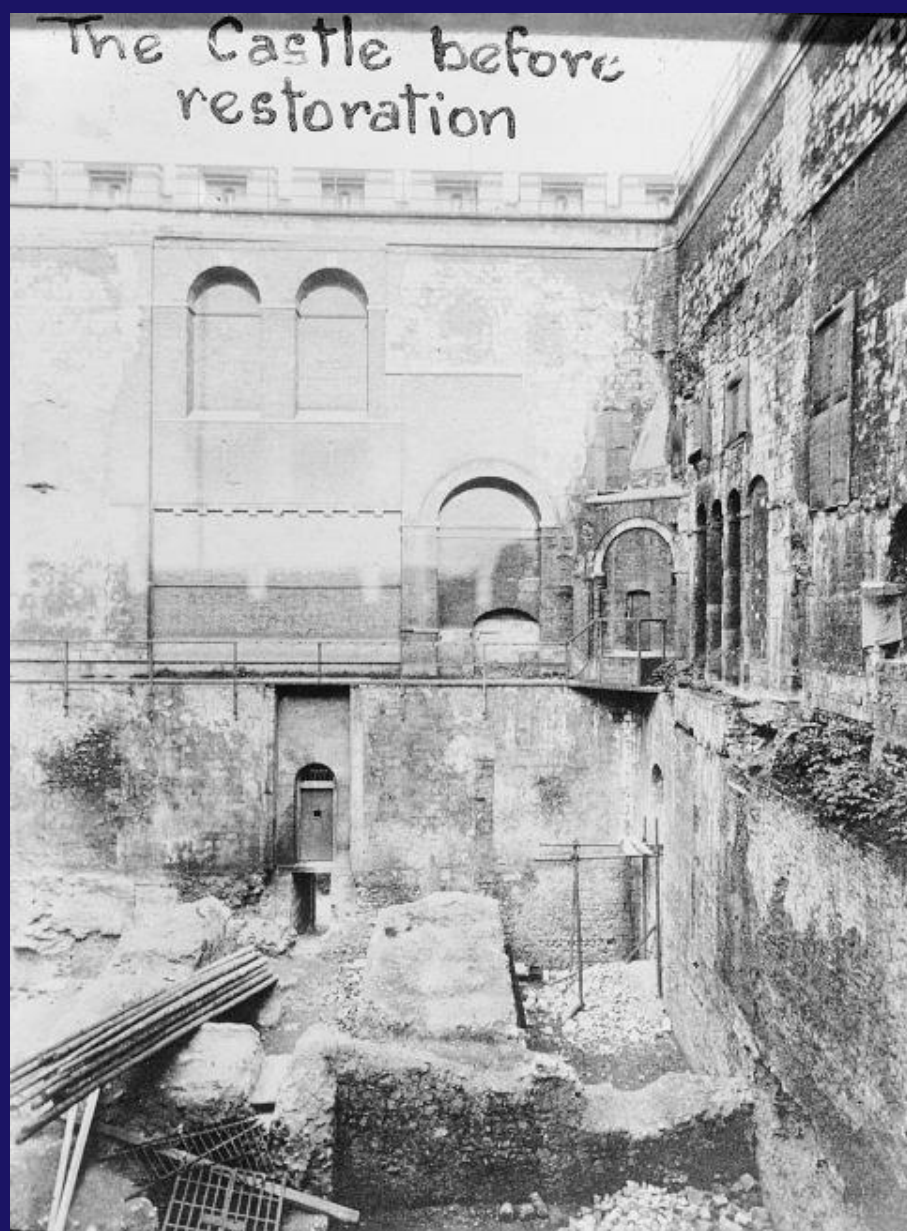


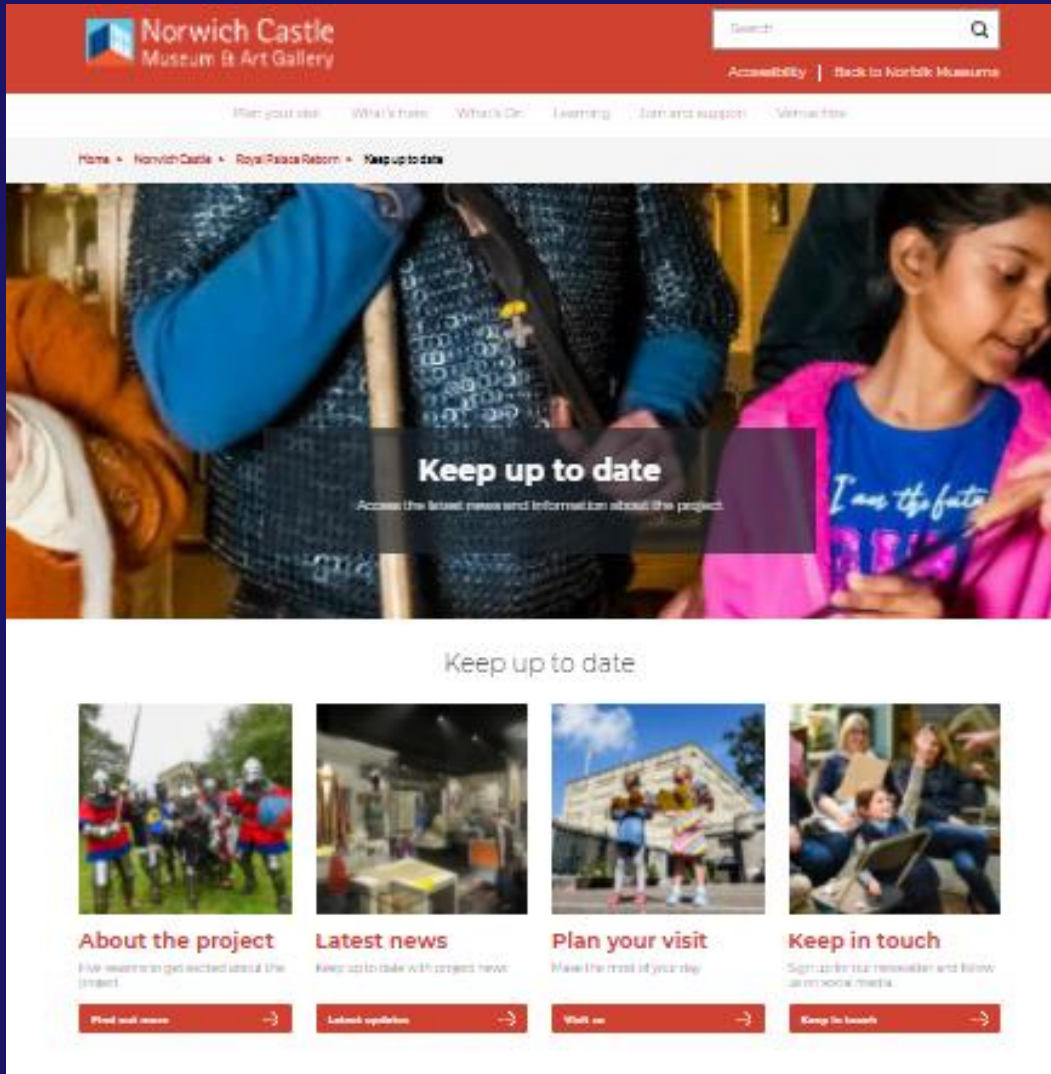












/NorwichCastleMuseum



@NorwichCastle



@NorwichCastle

#CastleReborn

www.museums.norfolk.gov.uk/RoyalPalaceReborn

We gratefully acknowledge the support of



made possible by National Lottery players



Thanks to all supporters of the Keep Giving and Adopt an Object campaigns

Patron of Royal Palace Reborn: Stephen Fry





Norwich Castle
Royal Palace Reborn

Thank you for listening

