

# Norfolk Local Access Forum

Date: **Wednesday 6 October 2021**  
Time: **10.30am**  
Venue: **Council Chamber, County Hall, Martineau Lane, Norwich**

**Persons attending the meeting are requested to turn off mobile phones.**

## Membership:

Mr Martin Sullivan (Chairman)  
Mr Ken Hawkins (Vice-Chairman)  
Cllr Lana Hemsall (Sustainable Transport Member Champion)

Mr Chris Allhusen  
Mr Fraser Bowe  
Mr Andy Brazil  
Cllr Penny Carpenter  
Mr Vic Cocker  
Mr Andrew Darby  
Miss Bethan Edmunds  
Mr Mike Edwards  
Mr Simon Fowler

Mr David Hissey  
Ms Ruth Goodall  
Mr Kevin Grieve  
Mrs Suzanne Longe  
Mrs Elizabeth Meath Baker  
Mr Niall Pettitt  
Miss Louise Rout  
Mr Paul Rudkin  
Cllr Maxine Webb

**For further details and general enquiries about this Agenda please contact the Committee Officer:**

Nicola Ledain on 01603 223053 or email [committees@norfolk.gov.uk](mailto:committees@norfolk.gov.uk)

**Under the Council's protocol on the use of media equipment at meetings held in public, this meeting may be filmed, recorded or photographed. Anyone who wishes to do so must inform the Chairman and ensure that it is done in a manner clearly visible to anyone present. The wishes of any individual not to be recorded or filmed must be appropriately respected.**

## **Advice for members of the public:**

This meeting will be held in public and in person.

It will be live streamed on YouTube and, in view of Covid-19 guidelines, we would encourage members of the public to watch remotely by clicking on the following link:

<https://youtu.be/TiqGJvMU7G0>

However, if you wish to attend in person it would be most helpful if, on this occasion, you could indicate in advance that it is your intention to do so. This can be done by emailing [committees@norfolk.gov.uk](mailto:committees@norfolk.gov.uk) where we will ask you to provide your name, address and details of how we can contact you (in the event of a Covid-19 outbreak). Please note that public seating will be limited.

Councillors and Officers attending the meeting will be taking a lateral flow test in advance. They will also be required to wear face masks when they are moving around the room but may remove them once seated. We would like to request that anyone attending the meeting does the same to help make the event safe for all those attending. Information about symptom-free testing is available [here](#).

## **A g e n d a**

**1 To receive apologies and details of any substitute members attending**

**2 Election of Chair**

**3 Chair's Announcements**

**4 Election of vice-Chair**

**5 Minutes**

To confirm the minutes of the meeting held on 4 August 2021

Page **5**

**6 Members to Declare any Interests**

If you have a **Disclosable Pecuniary Interest** in a matter to be considered at the meeting and that interest is on your Register of Interests you must not speak or vote on the matter.

If you have a **Disclosable Pecuniary Interest** in a matter to be considered at the meeting and that interest is not on your Register of Interests you must declare that interest at the meeting and not speak or vote on the matter

In either case you may remain in the room where the meeting is taking place. If you consider that it would be inappropriate in the circumstances to remain in the room, you may leave the room while the matter is dealt with.

If you do not have a Disclosable Pecuniary Interest you may nevertheless have an **Other Interest** in a matter to be discussed if it affects, to a greater extent than others in your division

- Your wellbeing or financial position, or
- that of your family or close friends
- Any body -
  - Exercising functions of a public nature.
  - Directed to charitable purposes; or
  - One of whose principal purposes includes the influence of public opinion or policy (including any political party or trade union);

Of which you are in a position of general control or management.

If that is the case then you must declare such an interest but can speak and vote on the matter.

- 7 To receive any items of business which the Chairman decides should be considered as a matter of urgency**

**8 Public Question Time**

Fifteen minutes for questions from members of the public of which due notice has been given. Please note that all questions must be received by the Committee Team ([committees@norfolk.gov.uk](mailto:committees@norfolk.gov.uk)) by **5pm Friday 1 October 2021**. For guidance on submitting a public question, view the Constitution at [www.norfolk.gov.uk/what-we-do-and-how-we-work/councillors-meetingsdecisions-and-elections/committees-agendas-and-recent-decisions/ask-aquestion-to-a-committee](http://www.norfolk.gov.uk/what-we-do-and-how-we-work/councillors-meetingsdecisions-and-elections/committees-agendas-and-recent-decisions/ask-aquestion-to-a-committee)

**9 Local Member Issues/Questions**

Fifteen minutes for local member to raise issues of concern of which due notice has been given. Please note that all questions must be received by the Committee Team ([committees@norfolk.gov.uk](mailto:committees@norfolk.gov.uk)) by **5pm on Friday 1 October July 2021**.

**10 Feedback from events attended by NLAf members**

**11 Meetings Forward Plan**

Page **10**

**12 NLAf Subgroups' report (Permissive Access; PROW; NAIP; Vision and Ideas; Joint Communications)**  
Report by Member of the NLAf

Page **13**

**13 Pathmakers Projects**  
Report by Member of the NLAf

Page **52**

**14 Monument**  
Report by Director of Culture and Heritage

Page **53**

**15 Countryside Access Arrangements update**  
Report by the Director of Culture and Heritage

Page **57**

**16 NCC Member Sustainable Transport update**  
Report by the Director of Culture and Heritage

Page **66**

**17 Major Infrastructure Projects and Planning**  
Report by the Director of Culture and Heritage

Page **70**

Tom McCabe  
Head of Paid Services  
County Hall  
Martineau Lane  
Norwich  
NR1 2DH

Date Agenda Published: 28 September 2021



If you need this document in large print, audio, Braille, alternative format or in a different language please contact 0344 800 8020 or (textphone) 18001 0344 800 8020 and we will do our best to help.

**Norfolk Local Access Forum**  
**Minutes of the Meeting Held on 04 August 2021**  
**at 10.30am via Microsoft Teams**

**Member:**

Martin Sullivan - Chair  
Elizabeth Meath Baker  
Vic Cocker  
Simon Fowler  
Ken Hawkins – Vice-Chair  
Suzanne Longe  
Mike Edwards

**Representing:**

Motorised Vehicles / Pathmakers  
Rural / local business / economy  
Walking  
Walking / Pathmakers  
Walking  
Equestrian  
Land Ownership

**Officers Present:**

Su Waldron  
Nicola Ledain

Project Officer (Environment Team)  
Committee Services Officer, Governance Department,  
NCC  
Lead Project Officer Walking and Cycling

Matt Hayward

**1. Apologies for Absence**

- 1.1 Apologies had been received from Cllr Andrew Jamieson, David Hissey, Jason Moore, Bethan Edmunds, Chris Alhusen.

The Chair also welcomed Niall Petitt and Kevin Grieve who were prospective members of the NLAF.

**2. Chair's Announcements**

- 2.1 The Chair reported that;
- The Norfolk County Councillors had been appointed as Cllr Penny Carpenter, Cllr Maxine Web and Cllr Lane Hemsall.
  - A record of consultations circulated and dealt with by the NLAF between meetings is available on the NLAF SharePoint site;
  - The amended constitution on the website
  - Brigid Fairman had resigned from the NLAF, and the Chair thanked her for her contribution while she had been a member.

**3. Minutes**

- 3.1 The minutes of the meeting held on 14 April 2021 were confirmed as a true record.

**4. Declarations of Interest**

- 4.1 There were no interests declared.

**5. Urgent Business**

- 5.1 There was no urgent business.

## **6. Public Question Time**

- 6.1 No public questions were received.

## **7. Local member Issues / Questions**

- 7.1 There were no member questions received.

## **8. Feedback from Events**

- 8.1 The Vice Chair reported that the reports from the three regional LAF meetings that had been held since the last NLAF meeting were in SharePoint.

Suffolk Local Access Forum had been getting more involved at planning applications. They had been looking at not just protecting the routes through new developments and ensuring there was one but also making sure it was a substantial route. They had also talked about officers from Suffolk, Essex and Norfolk together promoting a regional trail around the coast once the coast path was more established.

The East Regional LAF meeting had focused on the removal of bridges but there was concern about where the funding was coming from to remove the proposed bridges. NCC Officers confirmed that the funding was coming from Highways England and as part of the Greenways project, they had been tasked to ensure that the removal of bridges doesn't hinder any future development of railways. The NLAF would welcome information regarding the consultation about the bridges.

## **9. Meetings Forward Plan**

- 9.1 The NLAF received the annexed report (9) which outlined agenda items for the forthcoming meetings. The Chair reminded NLAF members to put forward further agenda items for consideration at any point (by contacting him).
- 9.2 Members hoped that someone would be able to attend the next meeting to update and inform regarding ELMS.
- 9.3 Points raised in the feedback from the events report would predominately be picked up in the PROW sub group, such as the footpaths through developments, and interactive maps and their temporary closure
- 9.3 The NLAF **NOTED** the Forward plan.

## **10. NLAF Subgroups' report (Permissive Access; PROW; NAIP; Vision and Ideas; Joint Communications)**

- 10.1 The NLAF received the annexed reports (10) (PROW subgroup) which set out the latest discussions and recommendations of the sub-groups of the NLAF.

- 10.2 There was some concern that the Local Access Forum set up lacked Government strategy. It was felt that there was sometimes lots of talk, but it was difficult to make an impact and put into action the decisions made.
- 10.3 It was reported that the amount spent on footpath maintenance was £70k per year. There was also going to be an additional Countryside Officers for an 18month period in the first instance.
- 10.4 A NAIP sub-group would be set up for September.
- 10.5 There was no more development from vision and ideas sub-group.
- 10.6 The Forum **AGREED**:
- That in supporting voluntary work in parishes and towns, NLAf encourages adoption of an alternative name to Footpath Warden, in order to reflect the full range of work included in the role
  - That Ken Hawkins (as PRow subgroup Chair) and Martin Sullivan (as NLAf Chair) should meet with appropriate NCC staff to explore approaches to dealing with reports of issues on the rights of way network, and to the processing of applications for Definitive Map Modification Orders (DMMOs).
  - That NLAf responds to proposals at Thickthorn junction to suggest that the bridge joining the two parts of Cantley Lane should accommodate use by cyclists and horse riders as well as pedestrians.

## **11. Pathmakers Projects**

- 11.1 The NLAf received the annexed report (11) which updated the Forum on the activities of Pathmakers.
- 11.2 Pathmakers had received some funding from Paving Away and Geovation. Pathmakers were currently redefining their business strategy and communication plan along the marketing and redesigning the website. There was also a parish map board project ongoing that would be reported in the future.
- 11.2 The NLAf **NOTED** the report.

## **12. Countryside Access Arrangements update**

- 12.1 The Forum received the annexed report (12) which highlighted this work in terms of the volumes of customer queries received and responded to. The paper highlighted the work in terms of the volumes of customer queries received and responded to. The paper also highlighted other key areas of work.
- 12.2 There was concern raised that footpaths were disappearing due to the amount of growth from hedgerows etc. and it was making people walk in fields, over crops and creating own trails. It was vital that this was tackled as the network would disappear. This was probably due to the wet / dry weather, and the increase in footfall due to lockdown and Covid-19. Officers encouraged reporting any overgrown footpaths on the online reporting system.

12.3 There was concern raised about enforcement and that there seemed a lack to push forward with any kind of enforcement. It had been discussed in great detail previously, but the proposed regular catch up with Officers would provide an opportunity to discuss this again.

12.2 The NLAF **NOTED** the progress made to date since the Countryside Access Officer posts were introduced.

### **13. NCC Member Walking and Cycling Champion update**

13.1 The Forum received the annexed report (13) which provided a summary of the key walking and cycling projects relevant to the Local Access Forum.

13.2 The NLAF asked if the change of title to the Member Champion reflected a change a role or just a change of title. The role would still primarily be about walking and cycling but would also incorporate some additional aspects. It would also depend on how the Member would like to focus the role.

13.3 The NLAF **NOTED** the progress of the walking and cycling projects as outlined in the report.

### **14. Major Infrastructure Projects and Planning**

14.1 The Forum received the annexed report (14) which updated them on the major infrastructure projects that were currently underway in the County which impacted on Public Rights of Way.

14.2 The NLAF **NOTED** the table of major infrastructure projects in Norfolk.

The meeting closed at 11.45am

**Martin Sullivan, Chairman,  
Norfolk Local Access Forum**



If you need this document in large print, audio, Braille, alternative format or in a different language please contact Customer Services on 0344 800 8020 or Text Relay on 18001 800 8020 (textphone) and we will do our best to help.



# Norfolk Local Access Forum (Forum member report)

<b>Report title:</b>	Meetings Forward Plan
<b>Date of meeting:</b>	6 <sup>th</sup> October 2021

## Summary

A plan for agenda items for future NLAF meetings has been prepared for discussion and agreement.

### Recommendation

To agree and add to the agenda plan (Appendix 1) for future meetings of the NLAF with suggestions, proposals and timings for agenda items

<b>1.</b>	<b>Proposal</b>
1.1.	<p><u>Standing agenda items are as follows:</u></p> <ul style="list-style-type: none"> <li>• Chairman's announcement (not a report)</li> <li>• Feedback from conferences and events attended by NLAF members (not a report)</li> <li>• Meetings forward plan (NLAF member report)</li> <li>• Sub groups' meetings (NLAF member report)</li> <li>• Pathmakers update (NLAF member report)</li> <li>• Countryside Access arrangements (NCC report)</li> <li>• NCC Member Champion for Sustainable Transport (NCC report)</li> <li>• Major infrastructure projects update (NCC report)</li> </ul>
1.2.	<p><u>January 2022 meeting will include:</u></p> <ul style="list-style-type: none"> <li>• Arrangements for off-site meeting</li> </ul>
1.3.	<p><u>Future Agenda topics and timetabling for agreement and timetabling:</u></p> <ul style="list-style-type: none"> <li>• Water based activities</li> <li>• Path widths standards for new paths arising from development</li> <li>• LCWIP</li> <li>• Cycling and Walking Strategy</li> <li>• Windfarm routes</li> <li>• Access for all</li> <li>• Highways Team Highlights</li> <li>• Data counters and footfall on Norfolk Trails</li> <li>• Cutting contract</li> <li>• SAIL project</li> <li>• Felmingham site visit (Weavers' Way, RDPE surface improvements)</li> <li>• Agriculture and Environment Bills</li> <li>• ELMS presentation (Natural England) – access elements</li> <li>• Farming in protected landscapes (e.g. AONB)</li> </ul>
<b>2.</b>	<b>Recommendations</b>

2.1.	To agree proposals and timings for future agenda items
<b>3.</b>	<b>Evidence</b>
3.1.	See proposal

If you have any questions about this report please get in touch with:

<b>NLAF member name :</b>	<b>Martin Sullivan</b>
<b>Email addresses :</b>	<a href="mailto:martinsullivan4x4@yahoo.co.uk">martinsullivan4x4@yahoo.co.uk</a>
<b>Phone number</b>	<b>Via 01603 222810</b>



If you need this report in large print, audio, braille, alternative format or in a different language please contact [nlaf@norfolk.gov.uk](mailto:nlaf@norfolk.gov.uk) and we will do our best to help.

<b>Norfolk Local Access Forum (red are standing agenda items)</b>
<b>6th October 2021</b>
Chairman's announcement (not a report)
Feedback from conferences and events attended by NLAF members (not a report)
Meetings Forward Plan NLAF MEMBER REPORT
Sub-groups' NLAF MEMBER REPORT (Permissive Access; PROW; NAIP; V and I; Communications)
Pathmakers NLAF MEMBER REPORT
Countryside Access Arrangements NCC REPORT
NCC Member Champion Sustainable Transport update NCC REPORT
Major infrastructure projects NCC REPORT
Election of Chair/Vice Chair
Welcome to new NLAF members
ELMs presentation (Natural England) - access elements, timescale
Monument
<b>January 2022 (date to be confirmed)</b>
Chairman's announcement (not a report)
Feedback from conferences and events attended by NLAF members (not a report)
Meetings Forward Plan NLAF MEMBER REPORT
Sub-groups' NLAF MEMBER REPORT (Permissive Access; PROW; NAIP; V and I; Communications)
Pathmakers NLAF MEMBER REPORT
Countryside Access Arrangements NCC REPORT
NCC Member Champion Sustainable Transport update NCC REPORT
Major infrastructure projects NCC REPORT
Off-site meeting arrangements (not a report)
<b>FOR CONSIDERATION</b>
Water based activity report (tbc)
Path widths standards (for new paths arising from development) (tbc)
LCWIP (tbc)
Cycling and Walking Strategy (tbc)
Windfarm Routes (tbc)
Access for all (tbc)
Highways Team highlights (TBC)
Update - data counters and footfall on Norfolk Trails (TBC)
Cutting contract (TBC)
SAIL (TBC)
Felmingham location site visit (Weavers' Way - RDPE surface improvements (TBC)
Agriculture and Environment Bills
ELMs presentation (Natural England) - access elements, timescale
Farming in protected landscapes (e.g. AONB)

# Norfolk Local Access Forum

## (Forum member report)

<b>Report title:</b>	NLAF subgroups' report (PRoW; NAIP; Vision and Ideas; Communications; Permissive Access)
<b>Date of meeting:</b>	6 <sup>th</sup> October 2021

### Summary

Recent progress and recommendations from the NLAF's 5 subgroups (PRoW; NAIP; Vision and Ideas; Communications; Permissive Access) are reported.

Recommendations for the NLAF:

1. PRoW subgroup

Note minutes from 13<sup>th</sup> September 2021

2. NAIP subgroup

Note NAIP monitoring report (March to September 2021) and Delivery Plan. Note and comment on subgroup commentary.

<b>1.</b>	<b>PROW subgroup</b>
1.1.	<b><u>Proposal</u></b>
	To note the Minutes of the PRoW subgroup meeting of 13 <sup>th</sup> September 2021 (Appendix 1).
<b>2.</b>	<b>NAIP subgroup</b>
2.1.	<b><u>Proposal</u></b>
	The latest NAIP monitoring report had been circulated to the NAIP subgroup (Appendix 2) along with the NAIP Delivery Plan 2021 – 2022 (Appendix 3). Vic Cocker from the NAIP subgroup offered the following commentary on the monitoring report and delivery plan for the NLAF to note and comment on.
2.1.1.	The format of NAIP monitoring is now well established and has become a useful way of keeping our focus on the objectives and targets which were set in the NAIP.
2.1.2.	The number of areas where there has been No Start (NS) has gradually reduced but there are significant omissions to be addressed in the future. These include promoting the access network which requires a communications plan, media strategy and leaflets and the development of a 'library' of photos and videos of walks plus promotion of Great Walking Trails (4.1; 4.3; 4.4; 4.7; 4.10).
2.1.3.	Work with large scale projects on community access is also a NS (6.5), as is the development of routes for health, in order to increase the number of people who say they have improved health from being active outdoors (7.4).
2.1.4.	Improving the value of the network is Theme 8 of the NAIP and we have still not made a start on developing profiles for those using the access network (8.3) and developing visitor itineraries (8.5) associated with this is lack of baseline data in

	order to be able to measure improvement in use
2.1.5.	NCC has now committed to maintaining the funding for network maintenance and three new temporary posts have been created to try to tackle some of the backlog of defects reported. A small number of enforcement notices were issued, the majority resolved without access to enforcement action. The NLAF has asked that NCC should take enforcement action quickly where landowners are deliberately blocking or diverting existing RoW
2.1.6.	Work to establish Kett's Country trail from Wymondham to Norwich is well under way and this 16-mile route will contribute to the target of increasing the number and length of all abilities routes by 10 routes and 100 km by 2029. Dealing with ash trees affected by die back has been as significant diversion of resources and effort for the Trails team. Progress has been made with the Greenways project. However, the focus of funding seems to be moving to Active Travel – the Norfolk Active Travel programme - which is not entirely consistent with planned increase in number of all abilities' routes connecting people and places, which was intended to provide countryside access opportunities, not manage zero carbon targets.
2.1.7.	Plans for the Burlingham estate are being developed which could contribute to meeting the target of creating 5 new opportunities for visitors to experience the natural and historic environment away from nature protected conservation sites. Undoubtedly the greater desire from the public for access to nature has put more pressure on protected sites during lockdown but statistics are not available
2.1.8.	NCC has developed Local Cycling and walking Investment plans for Great Yarmouth, Kings Lynn and Norwich.
2.1.9.	NCC has announced an investment of £495,000 over 3 years to develop active transport within the Greenways programme. This should help to increase the number of people involved in walking, cycling and horse riding ?? as an exercise (Theme 7). New circular cycling routes around town-based hubs are being developed with the first two at Wroxham-Hovet on and Cromer but it is unclear whether these plans involve physical investment and signage or just mapping.
2.1.10.	We are making progress against a well formulated NAIP.
3.	<b>Vision and Ideas subgroup; Communications subgroup; Permissive Access subgroup;</b>
3.1.	Verbal updates to be provided at the meeting as necessary.

If you have any questions about this report please get in touch with:

<p><b>NLAF member name :</b> Martin Sullivan (re PROW subgroup) Vic Cocker (re Vision and Ideas subgroup) Martin Sullivan (re NAIP subgroup)</p> <p><b>Email address :</b> <a href="mailto:vic.cocker@btinternet.com">vic.cocker@btinternet.com</a> <a href="mailto:martinsullivan4x4@yahoo.co.uk">martinsullivan4x4@yahoo.co.uk</a></p>
--

If you need this report in large print, audio, braille, alternative format or in a different language please contact [nlaf@norfolk.gov.uk](mailto:nlaf@norfolk.gov.uk) and we will do our best to help.

Appendix 1: PRow subgroup minutes 20210913 (draft)

Appendix 2: NAIP monitoring report (March 2021 to September 2021)

Appendix 3: 2021 – 2022 NAIP Delivery Plan

## APPENDIX 1 PROW subgroup minutes

### NORFOLK LOCAL ACCESS FORUM

#### Public Rights of Way Subgroup Minutes

**Date:** Monday 13 September 2021 **Time:** 2pm - 4pm

**Venue:** MS Teams meeting - login details

<b>Invited</b>	
Keith Bacon (KB)	Broads LAF
Neil Cliff (NC)	U3A
Vic Cocker (VC)	Norfolk Local Access Forum
Chris Dady (CD)	CPRE
Simon Fowler (SF)	Norfolk Local Access Forum
Ken Hawkins (Chair) (KH)	Norfolk Local Access Forum
David Hissey (DH)	Norfolk Local Access Forum
Ann Melhuish (AM)	Norfolk Horse Driving Club
Ian Mitchell (IM)	The Ramblers
Martin Sullivan (MS)	Norfolk Local Access Forum
Ian Witham (IW)	Open Spaces Society
<b>NCC staff and others invited</b>	
Matt Hayward (MH)	Lead Project Officer
Michelle Sergeant (MSe)	Green Infrastructure Team
Helen Timson (HT)	NCC Norfolk Coast Partnership
Su Waldron (SW)	Projects Team
Russell Wilson (RW)	Norfolk Trails
Jason Moore (JM)	Highways

	ACTION
<b>1. Introductions and apologies for absence</b> Apologies received from MSe, DH, KH, VC Absent: IW, CD	
<b>2. Minutes of the meeting on 14<sup>th</sup> June 2021</b> were approved.	
<b>3. NLAF meeting on 4<sup>th</sup> August 2021</b> Minutes not yet circulated.	
<b>4. Matters arising from the minutes, not otherwise on the agenda</b>	
4.1. Nar Valley Way at Newton by Castle Acre: update  MS said that the case had been discussed at the recent meeting between NCC and NLAF on enforcements. MH confirmed that the case is complex but progressing as fast as possible.	
<b>5. Partnership and Community working</b>	
5.1. Parish Access Wardens/ Parish involvement in the access network – progress with developing the project	

MH updated the meeting (draft document on project scope to be circulated in due course).

A proposal is being developed with Norfolk ALC to provide a number of training sessions which will be delivered virtually to give people skills to undertake a greater role with parish paths.

NCC is working with internal stakeholders to put together a programme of online sessions to reach a range of people.

KB asked if the role was country-wide: MH confirmed just Norfolk.

KB welcomed the initiative – and the all-encompassing name for the role would cover open access land, other types of highway and tracks, staithes etc.

5.2. Parish boards – update

MS confirmed work was in progress on the idea

5.3. Issues from represented organisations

NC asked if PROW and Trails budgets not spent during 2020 were being carried over? RW confirmed that the small amounts carried over had been put into infrastructure improvements at Winterton. JM confirmed that £15k of Highways capital funding was carried over.

**6. Countryside Access arrangements**

6.1. General update

JM and RW gave an update on their comprehensive Countryside Access Arrangements report (circulated).

- Highways team were employing 3 new Countryside Access Technicians – which commenced today. Funding had been secured for an 18 month period for these roles
- 74 Section 131 notices (non re-instatement) had been issued by email. Most were resolved without recourse to further action
- At Upwell where a landowner had replaced an illegal gate that had been removed, NCC were considering the next legal steps to take
- RW's Trails Team had repaired steps at Gorleston and repaired access to Beeston Bump
- Future reports will include planned future works
- There had been many issues resulting from excessive vegetation growth and RW was taking the opportunity to speak directly to parishes (e.g. Thornham) over where responsibility lies to remedy

The meeting thanked RW and JM and their staff for all their work over the past 3 months and for providing the report.

6.2. Inspection reports (progress on work on sections/ circulars on Norfolk Trails)

Covered under 6.1

6.3. Any specific issues

NC asked about a Mid Norfolk Railway bridge on Hoe FP 3 which is in a state of disrepair. RW said that the bridge would be (has been?) taken down (only option) and the Mid Norfolk Railway would reinstate a PROW



	<p>crossing over the railway line with NCC to supply a specification for a suitable footbridge. This was the only option recommended by Legal Orders and Registers team.</p> <p>AM asked about funding for direct parish action to maintain paths. MH referred her to the parish paths seminars information packs (from 2019/2020) and recommended that her parish engaged with the upcoming training to be offered through Norfolk ALC (see 5.1). RW said that he has several Service Level Agreements with parishes over this.</p> <p>AM was concerned that her parish didn't appear to be on the Norfolk ALC mailing list.</p> <p>JM confirmed that Highways Area Teams are meeting with parishes (also arranged through Norfolk ALC) to update on PROW and Highways activities – the West Area seminar is tomorrow! (September 14<sup>th</sup>).</p> <p>KB raised an issue concerning the Bure Valley Path between Buxton and Hautbois where a bridge across the river has been closed. RW thought that the Experience project might be involved and he agreed to investigate.</p> <p>ACTION: RW to look into Buxton / Hautbois BVP issue.</p>	<p>RW to investigate Hautbois/ Buxton bridge issue</p>
6.4.	<p>Report on meeting with NCC staff on enforcement action</p> <p>MS had attended a meeting on enforcement action with officers. The minutes had not been circulated at the time of this meeting but are appended (Attachment 1).</p> <p>His view was that NCC was doing the best it could.</p>	
6.5.	Highways England (now National Highways) issues	
6.6.	<p>Major infrastructure projects and planning applications</p> <p>1 The meeting felt there was no need to make any NLAf specific recommendations regarding the Long Stratton housing developments.</p> <p>2 Regarding Shouldham Warren – SF advised that the NLAf response should be made once a planning application had been submitted.</p> <p>3 Equinor and windfarm cabling – not discussed in depth</p> <p>4 Thickthorn junction. The meeting noted that the NLAf submission had been made and that the examination timetable would follow</p>	
6.7.	<p>The meeting discussed the issue of removal of unsealed highways from the List of Streets maintained by local Highway Authorities.</p> <p>KB confirmed this had been discussed by the BLAF and that this had occurred in the past – e.g. when the A149 was created and some unclassified roads were removed.</p> <p>IM also confirmed that there were further specific examples he knew of including one at Newton by Castle. He advised that anyone wishing to</p>	<p>KB / ALL</p>

research the topic would find the Commons Register maps useful as a starting point as these use roads mapping as a base.

JM felt that it was unlikely that the situation was unlikely to arise nowadays as unsealed highways would always remain part of the network until stopped up (as part of a legal process).

No further action was agreed.

## **7. Definitive Map Modification Orders**

7.1. IM had circulated through his spreadsheet of NCC listings of applications for DMMOs (shared with the group via NLAF SharePoint under this meeting).

IM had also circulated a note concerning the backlog on PINS of orders relating to public rights of way on which work has not yet started which confirmed:

- As of mid-August 2021 there are 80 Orders that are currently waiting the start of the determination procedure. Of these 55 are DMMOs;
- For the last three financial years the following figures have been provided:

YEAR	Orders Received	Orders Determined
2018 (01/04/18-30/03/19)	186	155
2019 (01/04/19-30/03/20)	168	137
2020 (01/04/20-30/03/21)	113	91

These figures are for DMMOs & PPOs only and do not include Appeals under Schedule 14 or rejections/withdrawals

KB asked if NCC had increased the staffing available to process the rapid increase in number of applications?

SW said that Lawrence Malyon had confirmed to KH/ MS/ MH that a new officer had been recruited to the Legal Orders and Registers Team to progress Modification Applications representing an increase in staff available to work on DMMOs. The post is for 2 years with a review scheduled after 12 months with a view to extending the contract beyond that (and that he would be pushing for it to be extended).

7.2. Other issues regarding DMMOs

## **8. Reports From NCC Officers**

8.1. To consider any other updating information of relevance to the subgroup

## **9. Any other business**

MS asked if anyone would be willing to take on Chair of the PROW group until KH returns?

AM had been in contact with a large estate in west Norfolk to ask whether

<p>re-wilding was likely to block PROW and had been assured it would not, although that had not been her subsequent experience where a cattle grid had been installed on a bridleway.</p> <p>KB asked if in person PROW meetings would be possible in the near future? SW advised that full NLAF meetings need to be in person.</p> <p>JM asked if SW could find out if hybrid subgroup meetings (i.e. some attendees via virtual link) would be possible at County Hall. SW to ask and report back.</p>	<p>SW – find out if hybrid s/g meetings are possible</p>
<p><b>10. Dates of next meetings</b>  Next NLAF 2021 dates is 6 October;  Date for next PROW subgroup: 6 December (online meeting).</p>	

#### **Attachments**

Attachment 1: Minutes from meeting on enforcement

## Attachment 1

### MINUTES

#### NCC & NORFOLK LOCAL ACCESS FORUM meeting on enforcement action

**Date:** Thursday 9<sup>th</sup> September 2021

**Time:** 2pm - 3pm

**Venue:** MS Teams meeting

<b>PRESENT</b>	
<b>NLAF</b>	
Martin Sullivan (MS)	Norfolk Local Access Forum
<b>NCC staff</b>	
<b>Matt Hayward (MH) CHAIR</b>	Lead Project Officer
Michelle Sergeant (MSe)	Green Infrastructure Team
Su Waldron (SW)	Project Officer
Russell Wilson (RW)	Norfolk Trails
Jason Moore (JM)	Highways
Lawrence Malyon (LM)	Legal Orders and Registers
David Mills (DM)	Countryside Access Officer
Apologies : Ken Hawkins	

	ACTION
<b>11. Introductions and apologies</b> Ken Hawkins is very unwell and unlikely to be at NLAF meetings in the near future. Martin has passed on the NLAF's regards to Ken's wife. All wished Ken a speedy recovery	MS to pass on NCC good wishes for Ken
<b>12. Aims of the meeting. Background. Agreement on scope and focus</b>  MS said that there is a general feeling amongst members of the NLAF that NCC enforcement action is somewhat lax in that it takes a long time between reporting of a blocked PROW for example, and any action being taken.	
<b>13. NCC enforcement policy – overview / explanation of what is involved, how it operates</b> <b>13.1.</b> DM outlined the way in which NCC deals with enforcement. In summary: <ul style="list-style-type: none"><li>- Blockages on unclassified county roads are not PROW – they are a low highway classification, but still higher than PROW for action.</li><li>- PROW issues are currently dealt with as part of NCC Highways activities: they come down the Highways network hierarchy for action</li><li>- PROW faults arrive to the 3 Countryside Access Officers (CAO) officers (David Mills, Sarah Price, Frances Salway) from the CRM fault managements software. In the west of the county (David's patch) he has 120 outstanding issues currently. In the south area there are 800 outstanding issues). These are not all enforcements of course – but it demonstrates the level of faults currently reported on the PROW network.</li></ul>	

- There is limited capacity for staff to carry out enforcement action. The process is:
  - o Email the landowner to request removal of the blockage.
  - o Issue Section A notice if not resolved:
  - o Issue Section B notice if not resolved:
  - o Direct NCC intervention to remove the blockage (costs not likely to be recovered) OR
  - o Prosecution (high cost)
- Regarding cropping blocking paths NCC is averse to taking action (beyond issuing an email to landowners) as the problem is likely to be temporary
- None of the 3 Countryside Access Officers are trained to take forward prosecution which is very detailed and resource heavy.
- DM cited another example concerning a restricted byway which had generated 100s of emails from numerous people (solicitors, MPs, NCC departments etc)

MS made the following points:

- He had no criticism of officers
- He had understood that at the time of the merger of the NCC PROW team with Highways that there was the promise of support from NCC Highways Team for PROW maintenance. DM confirmed that this had indeed been the intention (that his role would provide technical support to Highways staff with up to 60 staff available to implement action) but this had not come to pass.
- He had spoken to one NCC Member Councillor who had no knowledge of any NCC policy not to pursue lengthy PROW blockages
- MS cited the Newton by Castle Acre long-standing issue which had arisen due to a mapping error

#### **14. What information does the NLAF need from NCC on enforcement?**

14.1. Covered during discussions

#### **15. Information and reporting on issue resolution process available to the NLAF from NCC**

15.1. Reporting for individuals reporting a fault via CRM (Customer Relationship Management)

MS said updated feedback information for those reporting specific faults via the CRM reporting system was needed (and the ability for the reporting system to 'talk' to the interactive map). JM confirmed that he had been talking to Maria Thurlow about resolving these issues

JM to provide update

15.2. PowerBI reporting

MH went through the PowerBI reporting from the Customer Relationship Management system (faults on PROW and Trails) which is available to the NLAF via SharePoint site.

[https://norfolkcounty.sharepoint.com/sites/Norfolk\\_Local\\_Access\\_Forum/SitePages/CRM-Report.aspx](https://norfolkcounty.sharepoint.com/sites/Norfolk_Local_Access_Forum/SitePages/CRM-Report.aspx)

The reporting demonstrates the volume of faults reported and that most are resolved

	MS confirmed this information was very useful – many thanks for providing	
15.3.	<u>Grass cutting routes on the interactive map</u> <a href="https://maps.norfolk.gov.uk/highways/">https://maps.norfolk.gov.uk/highways/</a>	
15.4.	<p>MS confirmed this information was useful</p> <p><u>Countryside Access Arrangements reports</u> – provided for each NLAF meeting (goes to the PROW subgroup first to enable more detailed discussion) which covers basic information on the number of enforcement notices issued. These reports are produced quarterly therefore, and take considerable time and effort to put together.</p> <p>MS confirmed this information was very useful to the NLAF. JM offered to provide further information within the report if the NLAF could identify what was required (subject to any GDPR restrictions). MS welcomed this very much and said he would raise at the PROW subgroup (on Monday 13<sup>th</sup> September 2021) and report back to JM.</p> <p>RW offered further information on the capital maintenance fund – MS welcomed this.</p>	<p>MS to raise at PROW s/g</p> <p>JM /DM/ to provide further information as identified by NLAF</p> <p>RW – information on capital maintenance fund</p>
15.5.	<p><u>What the TAMP (Transport Asset Management Plan) covers</u></p> <p>JM / DM outlined how the TAMP informs PROW management and interventions <a href="https://www.norfolk.gov.uk/what-we-do-and-how-we-work/policy-performance-and-partnerships/policies-and-strategies/roads-and-travel-policies/transport-asset-management-plan">https://www.norfolk.gov.uk/what-we-do-and-how-we-work/policy-performance-and-partnerships/policies-and-strategies/roads-and-travel-policies/transport-asset-management-plan</a></p> <p>DM said the TAMP is a risk based register and covers trunk roads down to public footpaths.</p> <p>An update is expected in 2024/25 and the NLAF have already indicated to JM changes they will recommend regarding the cycle of PROW inspections.</p> <p>JM/DM invited further NLAF recommendations when the TAMP is reviewed.</p>	<p>MS to encourage NLAF to put forward recommendations when the TAMP is refreshed in 2024/25</p>
16.	<b>The way forward - discussion</b>	ALL
16.1.	It was agreed that sessions such as the one today allow productive informal discussion – much easier than formal NLAF meetings and the format should be used more!	MS /NLAF to advise how best to take forward – is another ‘subgroup’ needed?
17.	<b>Legal Orders – Direct Map Modification Orders</b>	
17.1.	LM went through the DMMO process and register:	

<https://www.norfolk.gov.uk/out-and-about-in-norfolk/public-rights-of-way/register-of-definitive-map-modification-applications>

- process is not built for speed!
- Currently has 130 cases with a further 20 waiting for further documentation. This is a lot of cases
- Cases can't be registered if the application doesn't fulfil the requirements. There is also a judgement call on processing valid applications that lack evidence to avoid using limited resources when a case might not succeed
- MS asked if other councils have asked for the 2026 deadline cut off for unrecorded paths to be extended? LM said that NCC feels that there should be a cut off date to give certainty to landowners, however, an extension could help given delays caused by the pandemic and Brexit
- DM said local authorities in the East of England were preparing a joint response to a consultation on the 2026 deadline

MS thanked LM

**18. Planning applications and the character of PROW** (query from NLA at the last meeting)

18.1. MSe outlined her work to respond to planning applications that affect PROW.

- NCC doesn't see all planning applications that affect PROW
- She prepares detailed responses to individual applications and advises on diversion and the opportunity for ROW to be incorporated into open space in new developments
- MSe would be happy to follow up at a future meeting how the character of PROW can be preserved/ enhanced

MS thanked MSe

MSe – opportunity for follow up at a separate meeting or via PROW subgroup

**19. AOB**

19.1. MH thanked MS and the officers for all their input to the meeting

ALL



# Norfolk Access Improvement Plan (NAIP) 2019 - 2029

## Monitoring Report **March 2021 to August 2021**

Establishing Kett's Country  
Trail (Mulbarton)

Norfolk County Council

Environment Team | Floor 6, County Hall, Norwich, NR1 2SG | Email: [environment@norfolk.gov.uk](mailto:environment@norfolk.gov.uk) [norfolk.gov.uk](http://norfolk.gov.uk)



## Introduction

This report provides a summary of progress with 2019-2020 delivery of the Norfolk Access Improvement Plan <https://www.norfolk.gov.uk/out-and-about-in-norfolk/public-rights-of-way/norfolk-access-improvement-plan> which is Norfolk County Council's 10 year plan for increasing public use and enjoyment of the county's Public Rights of Way (PRoW) network.

The report:

- Provides a summary of progress against each of the NAIP's 8 Statement of Action themes, showing the number of NCC projects and services that contribute to the theme for this year (2020/2021) and theme highlights. At the back of the report there is a table of NCC projects and services that deliver against each theme.
- Covers the period March 2021 to August 2021;
- Covers Norfolk County Council projects and services
- Has been produced for the Norfolk Local Access Forum (NLAF) to enable them to monitor the plan in association with Norfolk County Council;
- Will be used by NCC to shape priorities for future work;
- Evaluates if themes are on schedule (significant level of activity within the theme);

Indicates where objectives are S= started; O = ongoing; NS = not started; A = achieved

The report demonstrates the wide range of activities ongoing to deliver against NAIP objectives.

It should, however, be emphasised that many of the highlights within this report relate to Norfolk Trails routes and not the wider PRoW network. Following a review of the Public Rights of Way Service in 2011, Norfolk County Council made the decision to promote existing long distance paths and associated circular routes under the Norfolk Trails banner separately from PRoW. It was believed that this approach would achieve the biggest

impact for the Norfolk economy—and this has been borne out by the many projects and upgrades it has been possible to fund from outside sources to benefit the network.

PRoW maintenance is directed at an operation level by NCC's Transport Asset Management Plan (TAMP) which identifies optimal allocation of resources under increasing pressures including limited budgets.

Over the reporting period there was a significant rise in numbers of faults recorded on the CRM system, primarily attributed to the impact of Covid 19. While the country went into lockdown there was an uptake in walking, running and cycling on village/local path networks across Norfolk. There were also isolated cases of landowners using Covid as an excuse to close some paths. Increased usage of paths has led to an increase in complaints about their condition. There is likely to be continued growth in faults recorded as summer progresses and more "Staycations" are taken.

## Report Date Range

Last



2

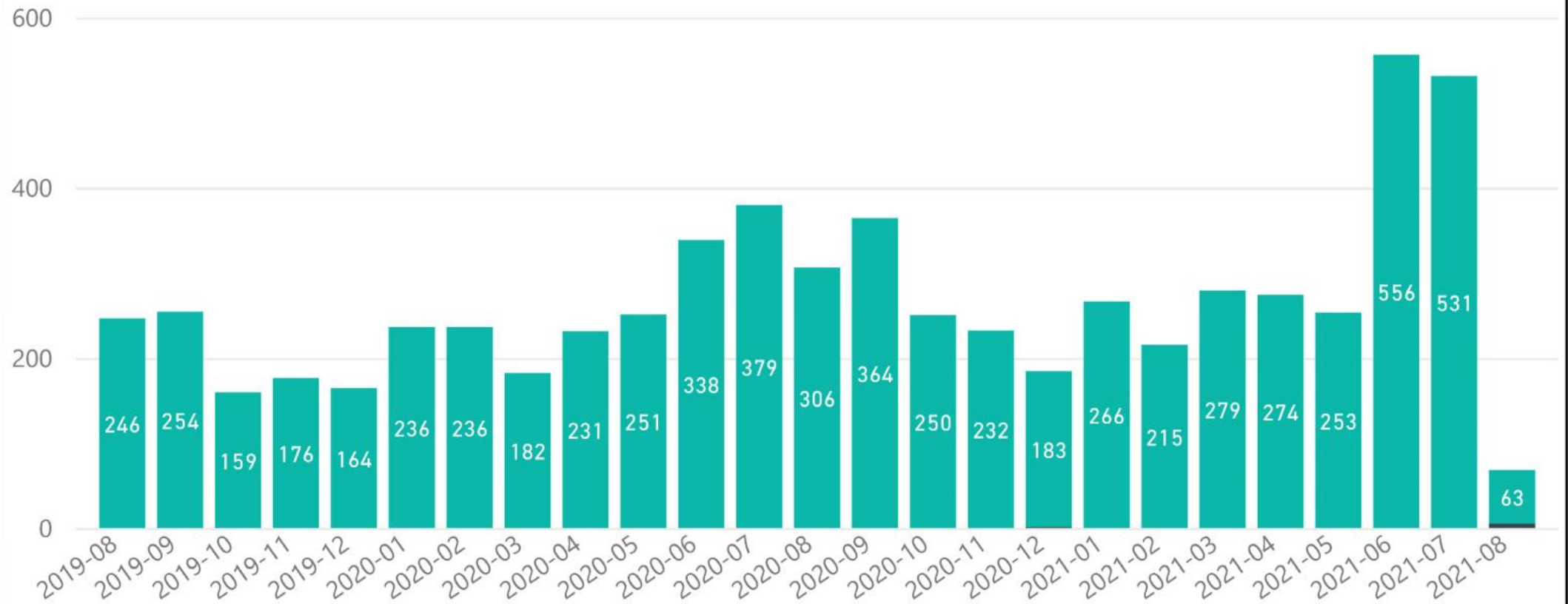
Years



06/08/2019 - 05/08/2021

### PROW and Trail defects received by month

InMayrise ● False ● True



# Theme 1: Well-managed Access Network

## Description of theme

**We will manage a well-signed and maintained network of multiuse routes efficiently and economically (Public Rights of Way and promoted Norfolk Trails and the National Trail in Norfolk) providing access to coastal, rural and urban areas, using good systems and standards .**

## Challenge

*The consequence of reduced public funding has meant less resource to manage the access network with poor satisfaction rates in comparison with some other highway authorities.*

*The challenge is to find innovative and new ways to help deliver network management, working with partners and communities*

## Target (by 2029)

Improve the Highways and Transport Network Survey Key Benchmark Indicator for Public Rights of Way KBI15 to 57 (from 54) (to match or exceed the national average)

Improve the Highways and Transport Network Survey Key Indicator for Public Rights of Way (Aspects) KBI16 to 55 (from 51) (to match or exceed the national average)

Improve all component Benchmark Indicators for KBI 16 to match or exceed the national average (see Appendix 8.5 of NAIP)

Increase volunteer involvement with PRow management (see target under 'Community-led access network')

Improve our standing against other Highway Authorities in the National Highways and Transport network survey.

## Statement of Action Objectives (text shortened)

1.1	Manage signage	O
1.2	Manage path surfaces	O
1.3	Manage linear woodlands	O
1.4	Improve Access for All	S
1.5	Better landowner relationships	S
1.6	Effective fault reporting	A
1.7	Address access-related faults	O
1.8	Maintain the Definitive Map for Norfolk	O
1.9	Manage Norfolk Trails and the National Trail/ Coast Path establishment	O
1.10	Create new access in growth areas	O
1.11	Train volunteers in path maintenance	O



There was exceptional vegetation growth on the Trails and PRow network this summer

# Theme 1: summary of progress March 2021 to August 2021

## Highlights

- Faults on Public Rights of Way. Between 1st March 2021 and 31st July 2021, 1896 faults were logged on the Customer Relationship Management (CRM) enquiries system which is up from 1381 during the same period in 2020. Most enquiries received continue to be regarding damaged or missing signs, non-reinstatement, obstructions, overgrown surface, overgrown hedges/ trees and surface condition.
- No further financial resources have yet been earmarked for PRow maintenance although three new temporary posts have been created (one for each of the three Countryside Access Officer 'patch' areas) to try to tackle some of the backlog of defects reported.
- PRow maintenance funding is £117,000 per annum (North and South: £46,800 each; West £23,400) with an additional capital maintenance fund for the National Trail and Norfolk Trails network of £400,000. Individual Norfolk County Councillor Member budgets have been increased to £10,000 each: funding can be put towards PRow works in Councillor wards, or on other environmental projects
- Non-reinstatement notices and obstructions. Since March 2020, 72 Section 131a, 134—137 non-reinstatement notices (or emails) were issued to landowners. The majority were resolved without recourse to further enforcement action. This figure is quite low, reflecting in part the resource pressures associated with serving and following up on notices. Over the same period, nil Section 130 (obstructions) or s56 (out of repair) notices were served on NCC.
- Enforcement procedures at Upwell (an illegal gate was removed by subsequently reinstated by the landowner) will be stepped up.
- Highways and Norfolk Trails cutting contracts were amalgamated for practical and efficiency purposes. With one of the wettest and hottest May and Junes on record, there was exceptional vegetation growth,

and contractors experienced difficulties with machinery hire (which was in big demand) and getting spares when there were machinery breakdowns. The cutting contract maps were all digitised and uploaded to Google to allow contractors to view the routes on aerial basemaps. Contractors were also able to mark locations cut directly onto the map for the NCC team to monitor progress from their desktops. The third vegetation cut will use information sent to tablet devices through the Mayrise software and the hope is that providing information in this format will be rolled out from 2022.

- Three Parishes have taken up the new Service Delegation Agreement (SDA) whereby they now maintain their own PRow network—these are Little Dunham, Trunch, Yaxham; Cromer is also interested. Monitoring is done in the same way as with a contractor.
- £200,000 capital fund works has been allocated.
- Plans are awaiting approval for Stretch 4 of the England Coast Path (Hunstanton to Sutton Bridge) before establishment work can commence. Stretch 3 (Weybourne to Hunstanton) is also at the determine phase, waiting for a Habitats Regulation Assessment. You can view progress with the entire Coast Path here: [https://assets.publishing.service.gov.uk/government/uploads/system/uploads/attachment\\_data/file/999374/coastal-access-england-map.pdf](https://assets.publishing.service.gov.uk/government/uploads/system/uploads/attachment_data/file/999374/coastal-access-england-map.pdf)

Vegetation Cutting Contract 2021	
Areas	18
Contractors	4
Trails meterage cut	397,480m to date (1,192,442m annually)
Number of cuts	3 (May, August, October)

## Theme 2: Well-connected Access Network

### Description of theme

**We will develop an integrated green network of routes and paths that provides opportunities for all users; improves ecological resilience; creates opportunities to connect with green space and places of natural and cultural heritage; improves connections for work/education/ recreation for residents and addresses other gaps with demonstrable need where possible, both within and outside targeted 'growth' areas .**

### Challenge

*Norfolk's population is predicted to grow from 898,4000 (mid 2017) to 1,002,300 by 2041 (Norfolk Insight). The challenge is to ensure that people can connect with places and green space sustainably from where they live. .*

### Target (by 2029)

Increase the number and length of all-abilities routes connecting people and places by 10 routes and 100 kilometres by 2029.

### Statement of Action Objectives (text shortened)

2.1	Improve connectivity through planning	O
2.2	Create circular walks in growth areas	S
2.3	Increase the number / length of multi-modal routes	S
2.4	Re-purpose disused railways for green access	S
2.5	Improve connectivity for wildlife	O
2.6	Encourage applications to register unrecorded paths	S
2.7	Retain and create new permissive access	S

### Greenways to Greenspaces

#### Strategy

- Delivery against the Norfolk County Council Environmental 25 Year Plan and the NAIP.
- Encouraging more active lifestyle to enable people to remain active and independent for longer.
- Greener Travel.
- Supporting Sustainable Tourism



#### Delivery

- Improvements and extensions to our Trails network
- Development of smart data and assistive technology
- Working with communities to create and maintain greenspaces.



#### Engagement

- At the heart of the project. working with communities, business and volunteers across our countryside access network.
- Supporting more environmental based employment opportunities.





## Theme 2: summary of progress March 2021 to August 2021

### **Highlights**

- Greenways to Greenspaces is Norfolk County Council's overarching theme to improve our green networks for travel and the environment through the delivery of many miles of new routes connecting market towns. Greenways will allow people to use sustainable options for travelling to school, work and local services. Opportunities include: bringing disused railways back into use as walking and cycling routes; new long-distance paths, such as a proposed route between Swaffham and Thetford; and the development of Local Cycling and Walking Investment Plans (LCWIPs) for Norwich, Great Yarmouth and King's Lynn which will focus on making active travel routes safer. Successful funding bids have been brought together into an integrated behaviour change programme for Norfolk – the Norfolk Active Travel Programme 2021/22 – to look at ways in which we can encourage more people to walk and cycle. Additionally, an updated Walking and Cycling Strategy has been drafted. Greenways and other linear habitats including roadside verges and other highways soft estate assets contribute to the quality of life in Norfolk and play a critical role in habitat connectivity for biodiversity including pollinators. Care for these habitats represents an important way in which the Council can deliver its Environmental Policy [www.norfolk.gov.uk/environmentpolicy](http://www.norfolk.gov.uk/environmentpolicy)
- Norfolk's trees are an important ecological feature and those along highways provide an interconnected habitat for biodiversity.

Those areas of the Norfolk Trails Network known to contain both high numbers of ash trees and frequent public access have been surveyed during July 2021 (these areas are agreed with the Trails Team using a combination of on-site counters, proximity to urban environments/

circular walks/footpaths and previous experience).

The Marriott's Way continues to present the biggest challenge with various locations requiring trees to be felled. Procedures such as leaving standing dead wood where appropriate, creating dead-hedges, retaining a percentage of timber in habitat-piles and carrying out Habitat Regulation Assessments when required, are still standard practice. A revised NCC tree contractor framework will ensure works continue to be carried out sensitively and safely. Communication with adjacent landowners and Parish Councils will be carried out in advance of works (majority of felling is to take place November 2021 - March 2022, outside of bird-nesting season).

- Work to establish Kett's Country Trail from Wymondham to Norwich is well underway (see Theme 7 for more details).

## Theme 3: Well-Protected Environment

### Description of theme

**We will protect the biodiversity and archaeology of the access network, improve understanding of Norfolk's landscape, archaeology and the natural and historic built environment that can be accessed from the network and manage the impact of visitors on protected sites**

### Challenge

*Population growth and increased visitor numbers to Norfolk's landscapes could have a detrimental impact on special habitats and species. The challenge is to minimise this threat by managing access to the most sensitive sites and promoting it where and when it will have least impact, but not direct people totally away from sensitive sites.*

### Target (by 2029)

Reduce visitor pressure which is affecting 10 protected natural sites and 5 historic sites which can be reached from the access network by 2029.

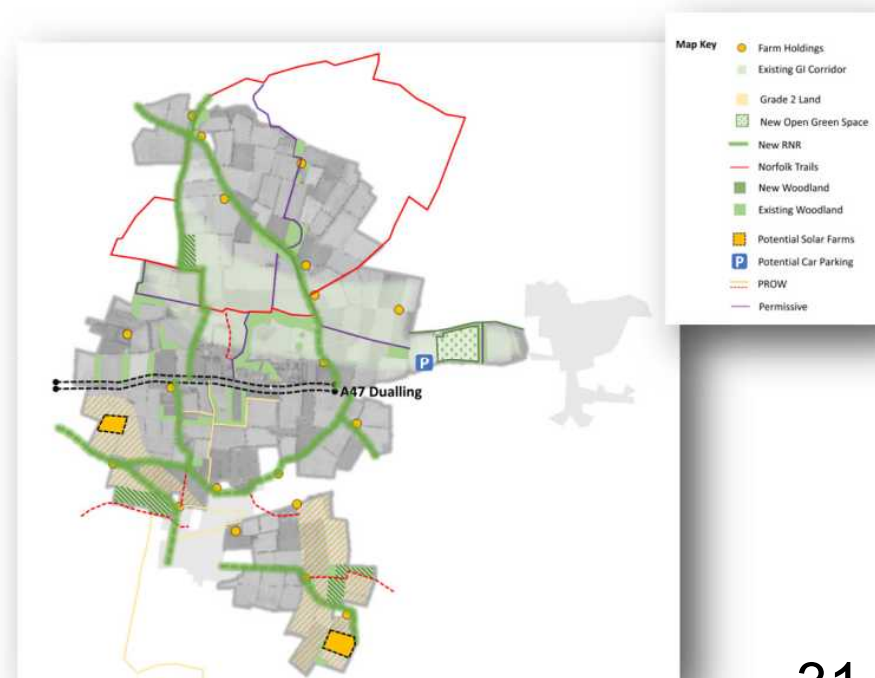
Improve visitor experience at the same sites through well-designed access infrastructure (e.g. path improvements) and signage.

Create and promote 5 new opportunities for visitors to experience the natural and historic environment away from protected nature conservation sites or outside peak visitor months by 2029.

Reach 1,000 people to improve their understanding of the natural and historic environment that can be reached from the access network.

### Statement of Action Objectives (text shortened)

3.1	Protect the historic environment	O
3.2	Protect the natural environment	O
3.3	Develop opportunities for sustainable transport	O
3.4	Improve integration with public transport	S
3.5	Protect and enhance biodiversity	O
3.6	Improve resilience of tree features	O
3.7	Develop shared goals for access in the Broads	S
3.8	Increase understanding of the natural and historic environment	S



Producing a master plan for the Burlingham Estate will explore the estate's potential to delivery gains for the environment and connectivity with Norwich (see next page).

## Theme 3: *summary of progress March 2021 to August 2021*

### Highlights

- The **Burlingham Estate** is a large landholding of 6,800 hectares to the west of Acle owned by Norfolk County Council. The land forms part of the County Farms Estate which allows small tenant farmers to get onto the farming ladder. With the potential dualling of the neighbouring A47 between Burlingham and Acle and large housing developments expected around Acle, Blofield and Brundall identified in the Greater Norwich Local Plan (GNLP) the Burlingham Estate is ideally situated to provide more green space to reduce recreational pressure on the Broads. In the last 6 months, Norfolk County Council has completed a scoping exercise for a 'Master Plan' to explore the estate's full potential to deliver greater environmental and societal gains:
  - ⇒ Whilst the grade 1 land will be retained for agriculture, taking a natural capital approach will safeguard and improve soil, air and water quality and biodiversity.
  - ⇒ Use of the forthcoming Environment Land Management System (ELMs) will be explored, along with the potential to use the landholding for Biodiversity Credits.
  - ⇒ Possible land use changes for grade 2 land will be investigated to provide greater public access including a Walking the Farms initiative which will extend walking access and provide information on farming and history
  - ⇒ On a large scale, improved sustainable connectivity with Norwich will be provided via a new long-distance cycle link to Mousehold Heath.

Production of the Master Plan for Burlingham is expected to take 12 months, and will involve: redbook valuation; a soil survey; water and air quality appraisal; extent of biodiversity; PRoW useage; a natural capital

assessment for the estate; stakeholder workshops; exploration of routes for 'Walking the Farms'; proposals for vacant buildings and information points.

- The **Endure project** continues to work on protecting embryo dunes and re-establishing dunes eroded by people at Holkham (see also Themes 4 and 6)
- A woodland trail and information panels were completed at **Newman Road, Rackheath** as part of a project involved Norfolk County Council to interpret and consolidate and improve access to the remains of a World War 2 USAAF airbase. The project involved: scrub clearance, planting of trees, habitat pile creation, bat boxes, installation of benches, new signs, interpretation panels and the creation of new woodland footpaths. The site now passes to Rackheath Parish Council for ongoing local management.  
[www.the467tharchive.org](http://www.the467tharchive.org)





## Theme 4: Well-Promoted Access Network

### Description of theme

**We will promote Norfolk's access network, the outstanding countryside and heritage that can be reached from it, and the benefits of outdoor activity, developing a communications plan to reach key user groups (visitors, walkers, cyclists, horse-riders, motorised vehicle users, disabled users and new users).**

### Challenge

*The access network is well used by dedicated access groups across the high season summer months. However there are large sections of the population which do not use the network. Furthermore, the network has capacity for greater use outside the summer season.*

*The challenge is to increase use of the network by people who do not use it and out of peak season. .*

### Target (by 2029)

Increase use of the network by people who currently do not use it and at times outside the summer months by 20% by 2029 (from 2010 baseline), targeting areas able to sustain an increase in footfall (no detrimental environmental impact) and promoting sustainable travel to the network.

Baseline and monitoring measured through a combination of people counter data and targeted surveys.

### Statement of Action Objectives (text shortened)

4.1	Develop a communications plan	NS
4.2	Develop / maintain websites	S
4.3	Develop printed and pdf leaflets	NS
4.4	Develop good media relationships	NS
4.5	Develop / maintain social media	S
4.6	Develop interpretative panels and organise events	S
4.7	Develop a photo and video library	NS
4.8	Develop apps and audio visual projects	S
4.9	Encourage schools' use of the access network	S
4.10	Promote the Great Walking Trails	NS
4.11	Promote access to a range of audiences	S
4.12	Develop 'etiquette' for multi-use routes	NS
4.13	Increase understanding of the natural and historic environment	S

## Theme 4: *summary of progress March 2021 to August 2021*

### **Highlights**

- NCC's **Experience** project <https://www.norfolk.gov.uk/what-we-do-and-how-we-work/our-budget-and-council-tax/our-budget/bids-and-funding-weve-won/experience-experiential-tourism-to-extend-the-visitor-season> has continued to develop themed itineraries to attract visitors to Norfolk out of season. Recruitment to the Experience Norfolk Access Group (ENAG) continues apace, and members have provided advice and guidance to help with the development of access infrastructure and online access for the project. Project highlights include:
  - ⇒ Use of focus groups involving representatives from disabled groups and minority communities to ensure that access was embedded into the commissioning stage of the Experience Art Trail. EXPERIENCE team currently developing new off-season activities (including walking & cycling) which will later be consumer tested
  - ⇒ The development of five cycle hubs with Cycling UK (see also Theme 8);
  - ⇒ An accreditation and training programme for tourism businesses;
  - ⇒ Supporting infrastructure developments to improve year-round access, and delivering exciting experiential cycling events for cyclists of all abilities
  - ⇒ Installation of 6 artworks along long-distance walking routes in Norfolk, creating a new outdoor art trail designed to attract off-season visitors. Local stakeholders helped identify suitable artwork sites along the selected walking route for the Art Trail and there will be an open call for artwork encouraging underrepresented and emerging artists to apply
- Norfolk Trails team post regularly on Twitter <https://twitter.com/norfolktrails> and Facebook <https://www.facebook.com/pg/NorfolkCountyCouncilNorfolkTrails/posts/>
- Norfolk County Council's **Out and About** pages <https://www.norfolk.gov.uk/out-and-about-in-norfolk> carry detailed information to allow people to explore Norfolk's 2,400 miles of paths, trails, cycle routes and bridleways. These popular pages include route maps for walking, cycling and horse riding, access tested trails, closure and diversions, activities and events. The Council's interactive map (also available from the Out and About pages) shows the Public Rights of Way Network and also provides access to Definitive Map Statements, the legal record of routes for each parish.
- **Active Norfolk** is developing its website to encourage people to get active outdoors, with many click-through links to further information <https://www.activenorfolk.org/public/get-active/active-outdoors/>. A new interactive map is planned
- A short animation *You and the Dunes* was created by the Endure project to remind people to safeguard Norfolk's beach dunes <https://youtu.be/7YVkjUevoyg>. The project has also helped fund a visitor-facing warden in partnership with the West Norfolk Habitats Monitoring and Mitigation Fund (HMM) set up to address the adverse effects of increasing visitor numbers to Natura 2000 sites resulting from development <http://www.norfolkcoastaonb.org.uk/partnership/west-norfolk-hmm-fund/1172>.



## Theme 5: An Access Network Underpinned by Excellent Information Management

### Description of theme

**We will maintain paper, GIS, and web-based versions of definitive and interactive maps and other access network information and integrate datasets spatially to identify opportunities where PRow/Trails can deliver gains for the economy, health and communities.**

### Challenge

*Managing accurate spatial information and data about the access network is a legal duty. The challenge is to manage updates and make available and use digital versions of spatial data (GIS) to make links between access and other relevant information (such as health, economy and growth) to create, share and use 'opportunity' maps (to identify opportunities that will deliver a number of benefits), essential for strategies and planning. See also healthy access network and valuable access network themes.*

### Target (by 2029)

Keep the Definitive Map up to date and the register of claims concerning the 2026 deadline

Process DMMOs.

### Statement of Action Objectives (text shortened)

5.1	Maintain the Definitive Map	O
5.2	Maintain interactive maps	O
5.3	Use spatial mapping to seek opportunities to improve green infrastructure	O
5.4	Use spatial mapping to link access and other data	S
5.5	Develop Google Streetmap for Norfolk Trails	S
5.6	Share counter data	S

## Theme 5: summary of progress March 2021 to August 2021

### Highlights

- **Paper and digital records** relating to modification applications, dedication agreements and public path orders updated on target;
- **Dedication agreements** under the Highways Act 1980 investigated and managed on target;
- **Direct Map Modification Orders (DMMO) applications** are being registered as soon as possible and the NCC online registers are up to date. There are currently **140** on the register <https://www.norfolk.gov.uk/out-and-about-in-norfolk/public-rights-of-way/register-of-definitive-map-modification-applications> up by 10 since the last report in March 2021. Administering claims is a lengthy and complex process.
- The **Legal Orders and Registers Team** recently recruited a Records and Registers Officer who will start work with the team in September 2021. This post will progress Map Modification Applications under Section 53 of the Wildlife and Countryside Act. The post is initially for 2 years (reviewed after 12 months) with full expectation that it will be extended.
- **Map statements** can be viewed via the interactive map, which also permits viewing of **cutting contract** routes and for users to directly report faults. <http://maps.norfolk.gov.uk/highways/>. This functionality has greatly improved the amount of information available to the public, and has been well received by user groups.



Screenshot—online register of Definitive Map Modification Orders

# Theme 6: A Community-led Access Network

## Description of theme

We will increase the involvement of communities in the development of and care for their local access network, working with parish councils, volunteers and other community organisations. .

## Challenge

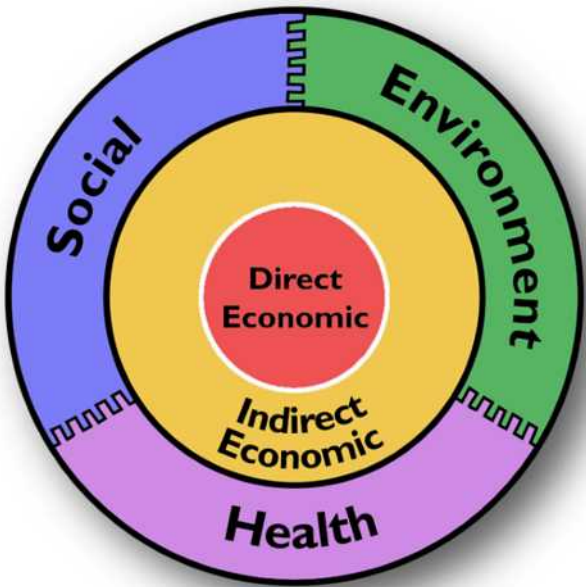
*As public funding reduces, the role of communities in helping to manage their local access becomes more important.*

*The challenge is to support and co-ordinate the large number of people willing to help from user groups and community groups .*

## Target (by 2029)

Provide support for 20 community-based user groups (via training) in the management of the network by 2029 Process DMMOs.

Statement of Action Objectives (text shortened)		
6.1	Support the NLAF	O
6.2	Support user groups manage PROW	S
6.3	Engage communities in projects that improve / manage access	S
6.4	Attract funding for local projects	S
6.5	Work with large scale projects on community access	NS
6.6	Support the development of Pathmakers	O



Greenways to Greenspaces—Benefits of the Countryside Access Network

## Theme 6: *summary of progress March 2021 to August 2021*

### Highlights

- **Two full NLAf meetings** supported by NCC took place within the reporting period: in April 2021 and August 2021. The April meeting was held virtually and live-streamed; the August meeting was held in person at County Hall. Meetings included regular updates from the NLAf's subgroups and NCC's Countryside Access Team, reports on major infrastructure projects that impact PROW, updates from the NCC Walking and Cycling Member champion. The April meeting received a report on the Economic and Health Value of PROW in Norfolk which had been researched by one of the NLAf (see also Theme 7).
  - **NLAf subgroups meetings:** The NLAf's Public Rights of Way subgroup continued to meet virtually during the reporting period (meeting in March and June). The meetings discussed partnership and community working; countryside access management; claims for lost paths (2026 claims) and put forward recommendations for the main NLAf meetings. For example, the group recommended that faults reported on the PROW network concerning access to a well used location should be included within the 'high' category for attention. This was taken forward by the full NLAf, and will be flagged to NCC when the Transport Asset Management Plan is reviewed.
  - **Pathmakers brand identify** underwent further development with the One Agency advising and helping to develop a communications plan. Paving the Way remains on hold owing to restrictions imposed by the Coronavirus pandemic. The trust appointed one further trustee.
  - The Norfolk Association of Local Councils (Norfolk ALC) (a membership association of parish and town councils in Norfolk <https://www.norfolkalc.gov.uk/>) hosted an online webinar on countryside access for parish councils on March 25th 2021 called '**Greenways to Greenspaces**'. The NLAf and NCC put together the programme which included speakers from both organisations.
- The evening introduced the Norfolk Access Improvement Plan and work underway to deliver better access through the NCC Greenways to Greenspaces initiative <https://www.norfolk.gov.uk/out-and-about-in-norfolk/norfolk-greenways>. The meeting also covered the NLAf's advisory role, and introduced parish council powers with respect to Public Rights of Way. The meeting concluded with an interactive audience session to answer generic questions about parish footpaths. The webinar was very popular with over 100 attending, and generated many queries that were followed up individually after the event. Listen again here: <https://we.tl/t-4MibBn5EP7>
- Norfolk ALC, the NLAf and NCC have progressed work to develop a **network of parish contacts** for Public Rights of Way. This was a key outcome from the earlier Parish Paths seminars which were initiated by the NLAf to explore what local action could help make PROW in parishes easy to use and increase community involvement. Norfolk County Council appointed an Outreach Officer (Greenways to Green Spaces) who will play a key role in taking this forward;
  - The **Endure** project <https://www.norfolk.gov.uk/what-we-do-and-how-we-work/campaigns/endure-project> produced a visitor management plan to protect the dunes at Holme-Next-The-Sea National Nature Reserve which will be implemented by Norfolk Wildlife Trust.



## Theme 7: An Access Network that Supports / Delivers Health Outcomes

### Description of theme

**We will improve the health and wellbeing of residents and visitors through initiatives which promote and demonstrate the benefits of physical activity to those not currently using the access network or who would benefit from additional physical activity as identified in the Norfolk Public Health Strategy.**

### Challenge

*In Norfolk, unhealthy lifestyles and obesity are estimated to contribute to 23,000 hospital admissions per year. We also face the challenges of an ageing population as there will be more elderly people in Norfolk in the future. If levels of ill health remain the same in the population, this will increase demand on health and social care services.*

*The challenge is to increase numbers of people using the access network to benefit their health and to make improvements to make access easier. .*

### Target (by 2029)

- Liaise with partners to create a baseline in 2019 to monitor activity of people in target groups.
- Increase the number of people from target groups who are active outdoors (e.g. walking and cycling) by 2029 (from 2019 baseline) through funded projects such as SAIL and Pushing Ahead.
- Increase the number of people who say they have improved health from being active outdoors (e.g. walking and cycling) by 2029 (from 2019 baseline) through funded projects such as SAIL and Pushing Ahead.

### Statement of Action Objectives (text shortened)

7.1	Evaluate the health value of the access network	S
7.2	Increase use of the access network for health	S
7.3	Develop active travel	S
7.4	Develop routes for health and to reduce carbon	NS

## Theme 7: *summary of progress March 2021 to August 2021*

### **Highlights**

- Work is underway to create **Kett's Country long-distance trail** linking Norwich to Wymondham plus five local circular walks linked to development areas (Wymondham and Hethersett) which will improve local walking opportunities for health and wellbeing.
  - ⇒ Bridges were replaced by the Ramblers at East Carleton and a further bridge will be replaced and a set of steps will be installed in September in Mulbarton to improve access to a new circular walk;
  - ⇒ Further access improvements for the route will be carried out over autumn and winter along the 18 mile Kett's route and circulars. The waymarking has been scheduled in to be created and installed over September 2021 following the final vegetation cuts of the summer..
- The Norfolk Local Access Forum's (NLAf) **Vision and Ideas subgroup presented a report to the NLAf on the economic and health value of PROW in Norfolk**. The meeting discussed the benefits derived from the PROW network and resourcing required for maintenance and sustainability. Further meetings will be scheduled between the NLAf and NCC.
- Greenways and other linear habitats including roadside verges, Public Rights of Way and highways soft estate assets assist biodiversity and play an important role in improving people's quality of life in Norfolk. Over a 3 year period, Norfolk County council has announced investment of £495,000 to **develop active transport within the Greenways programme** (see appendix 4 of agenda papers of the NCC Infrastructure and Development Select Committee, 14th July 2021 [https://norfolkcc.cmis.uk.com/norfolkcc/CalendarofMeetings/tabid/128/](https://norfolkcc.cmis.uk.com/norfolkcc/CalendarofMeetings/tabid/128/ctl/ViewMeetingPublic/mid/496/Meeting/1870/Committee/171/Default.aspx) Default.aspx). Funding for active travel has come from the Department for Transport (DfT) (Pushing Ahead); DfT Active Travel Fund; DfT e-cycle extension Fund; DfT capability Fund; Interreg Mobi-Mix project.
- An **Active Travel Programme** has been developed to encourage behaviour-change leading to an increased uptake of walking and cycling in Norfolk.
- NCC has developed **Local Cycling and Walking Investment Plans (LCWIPs)** for Great Yarmouth, King's Lynn and Norwich. These plans review existing walking and cycling routes in a locality and set out opportunities to develop these (and funding required) <https://www.norfolk.gov.uk/what-we-do-and-how-we-work/policy-performance-and-partnerships/policies-and-strategies/roads-and-travel-policies/local-cycling-and-walking-infrastructure-plans>.



Bridge replacement by the Ramblers at East Carlton assisted with ongoing development of Kett's Country long distance Trail



## Theme 8: A valuable access network

### Description of theme

**We will maximise the economic benefits to Norfolk that are generated through the access network by working with businesses, tourism agencies and Destination Management Organisations (DMOs) etc .**

### Challenge

*The Access network is of increasing value to the visitor economy with the environment and walking key attractions and reasons for people coming to Norfolk. However, currently, most visitors come for a day or less and their visitor spend is limited.*

*The challenge is to work with businesses, tourism agencies and local government to maximise visitor spend, ensuring that local businesses are well informed about the potential of the access network. This target must be considered in conjunction with Theme 3 (a well protected access network) to ensure that increased visitor footfall is managed sustainably . .*

### Target (by 2029)

- Increase the number of visitors by 20% in a sustainable way, targeting locations and times of year to maximize the potential to local businesses. It is envisaged that this could generate an extra visitor spend of £2m.
- Evaluation through appropriate studies, e.g. MENE


### Statement of Action Objectives (text shortened)

8.1	Develop links between business and Norfolk Trails	O
8.2	Increase numbers of visitors using Norfolk Trails by 20% by 2029	O
8.3	Develop profiles for those using the access network	NS
8.4	Develop visit itineraries	NS
8.5	Work with the Broads Authority on boat moorings on PROW	NS


**Free online workshops on**

**Experiential tourism**

Register below



Norfolk County Council

**Interreg** 

France ( Channel  
Manche ) England

**EXPERIENCE**

European Regional Development Fund

## Theme 8: *summary of progress March 2021 to August 2021*

### Highlights

- The University of Surrey has been confirmed as a new partner for the **Experience** Project (see box). Their role will be to create indicators to ensure that revenue generated by new visitors is retained locally and fed back into protecting landscapes. This will help ensure that the project creates lasting economic stability for future generations.
- **Experience** ran free workshops to help local businesses turn an idea into a visitor experience:
  - ⇒ Introduction to Experiential tourism:  
<https://youtu.be/iPnFFUN5IRk>;
  - ⇒ How to develop a visitor experience  
<https://youtu.be/PxDNWWXJ8Q4>
- The Norfolk Experience Team has been working on the designation of new **cycling hubs**. To date, two towns have been confirmed—Wroxham/Hoveton and Cromer - and an official launch will follow in October 2021. Each hub will have three new circular cycle routes of varying distances designed to appeal to a wide range of cycling abilities:
  - ⇒ Cycling UK have extended their enhanced equipment offer available to 'cycle-friendly' accredited businesses to all eligible businesses not just in the hubs but also those along the 3 routes - thereby adding significantly to the tourism offer;
  - ⇒ EXPERIENCE continues to work with Cycling UK on a round Norfolk cycling 'hero' route that will provide a long-distance cycling trail for the county.
- The **Prowad** project helped businesses across The Wash and North

Norfolk coast during COVID lockdowns to apply for tourism grants for new sustainable products. The plan for the upcoming year is to work on limits of acceptable change of impact of recreation and development on honeypot destinations (both people and nature).

<https://twitter.com/norfolkprowad>

<https://t.co/80bbQTsAS3?amp=1>



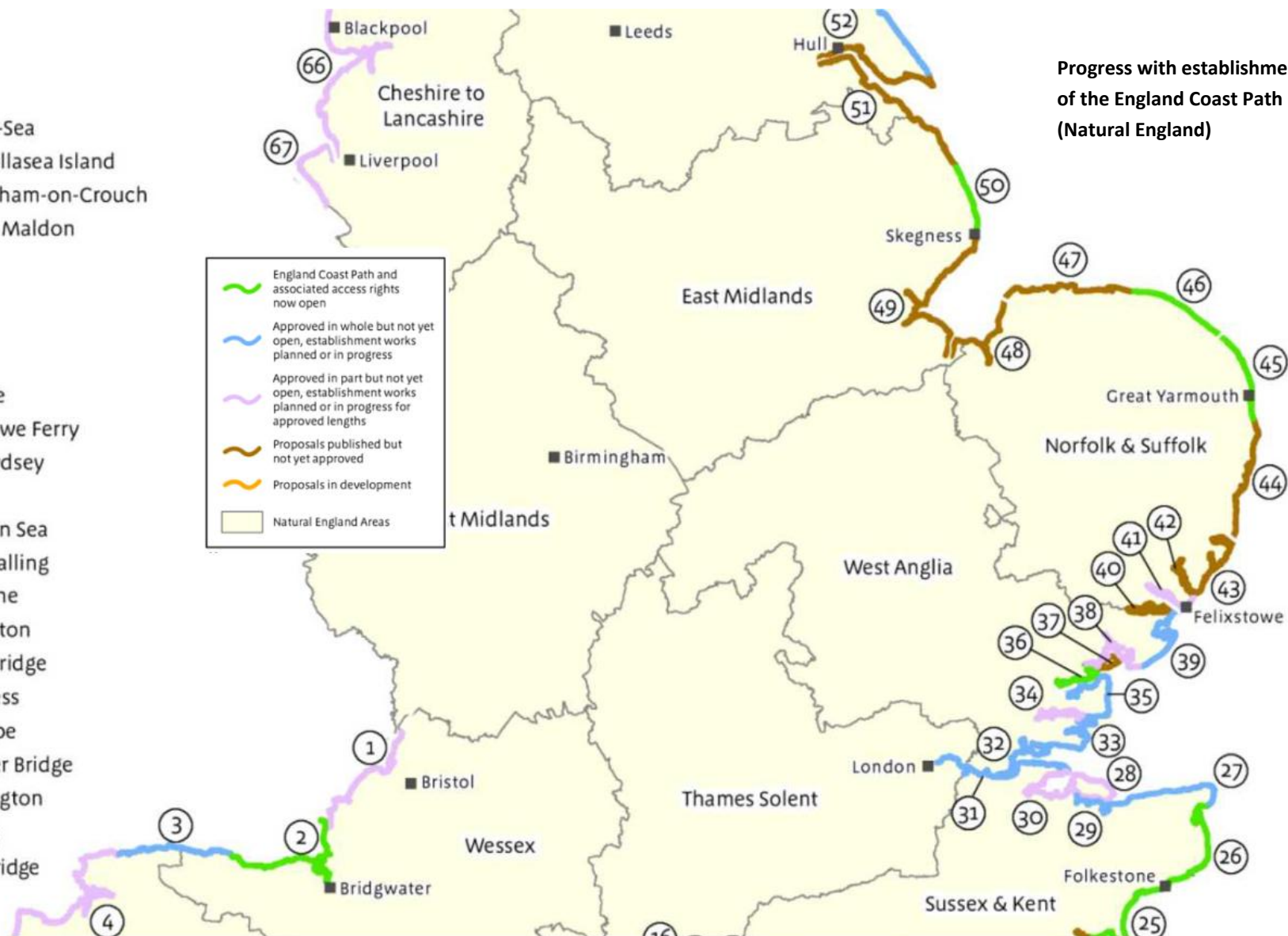
EXPERIENCE is a €23.3 million project co-financed by the European Regional Development Fund (€16 million) through the Interreg France (Channel) England Programme which aims to expand regional tourism by extending the visitor season to include October through to March <https://www.channelmanche.com/en/projects/approved-projects/experience/>

This will be achieved through the use of experiential tourism where people immerse themselves in activities and experiences unique to an area.

It is led by Norfolk County Council and runs from September 2019 to June 2023.

Experience includes a budget of £1million for improvements to physical infrastructure in Norfolk.

- 29 Whitstable to Iwade
- 30 Iwade to Grain
- 31 Grain to Woolwich
- 32 Tilbury to Southend-on-Sea
- 33 Southend-on-Sea to Wallasea Island
- 34 Wallasea Island to Burnham-on-Crouch
- 35 Burnham-on-Crouch to Maldon
- 36 Maldon to Salcott
- 37 Mersea Island
- 38 Salcott to Jaywick
- 39 Jaywick to Harwich
- 40 Harwich to Shotley Gate
- 41 Shotley Gate to Felixstowe Ferry
- 42 Felixstowe Ferry to Bawdsey
- 43 Bawdsey to Aldeburgh
- 44 Aldeburgh to Hopton On Sea
- 45 Hopton On Sea to Sea Palling
- 46 Sea Palling to Weybourne
- 47 Weybourne to Hunstanton
- 48 Hunstanton to Sutton Bridge
- 49 Sutton Bridge to Skegness
- 50 Skegness to Mablethorpe
- 51 Mablethorpe to Humber Bridge
- 52 Humber Bridge to Easington
- 53 Easington to Filey Brigg
- 54 Filey Brigg to Newport Bridge



Progress with establishment  
of the England Coast Path  
(Natural England)

[https://assets.publishing.service.gov.uk/government/uploads/system/uploads/attachment\\_data/file/999374/coastal-access-england-map.pdf](https://assets.publishing.service.gov.uk/government/uploads/system/uploads/attachment_data/file/999374/coastal-access-england-map.pdf)

The NAIP is supported by:



Community & Environmental Services

**Norfolk County Council**

Floor 6 County Hall | Martineau Lane | Norwich | NR1 2SG

Tel. (01603) 222773

E: [environment@norfolk.gov.uk](mailto:environment@norfolk.gov.uk)

W: [www.norfolk.gov.uk](http://www.norfolk.gov.uk)

NAIP Delivery Plan 2021 - 2022												
									Resources 1 = staff time (NCC, other partner staff, volunteer	PARTNERS / OWNER	ACTIONS 2021-2022	
THEME objective	THEME 1	THEME 2	THEME 3	THEME 4	THEME 5	THEME 6	THEME 7	THEME 8	Officer			
THEME objective number →	x	x	x	x	x	x	x	x				
PROJECT ↓	x	x	x	x	x	x	x	x				
Manage PRoW signage	x								JM	1	CAOs/ NCC Highways Team	Respond to cases recorded in line with agreed specified timescales and within financial and priority limitations. Provide feedback on progress to those who reported the issue. <b>ONGOING</b>
Manage PRoW path surfaces	x								JM	1	CAOs/ NCC Highways Team/ Contractors	Manage seasonal cutting contract 2021. Respond to additional requests for cutting in line with budgetary and priority limitations. <b>ONGOING. Update in report</b>
Manage the PRoW enforcement policy	x								JM	1	CAOs/ NCC Highways Team	Respond to cases recorded in line with agreed specified timescales and within financial and priority limitations. Provide feedback on progress to those who reported the issue. <b>ONGOING. Update in report</b>
Address PRoW access related faults and enquiries	x								JM	1,2	CAOs/ NCC Highways Team	Respond to cases recorded in line with specified timescales and within financial and priority limitations. Provide feedback to those who reported the issue. Manage Capital Highways Improvement fund PRoW Improvements allocation ( £200k 2018/2020) with selected sites completed by March 2020. Manage LTP funds (£15k per annum) for urban footpath improvements. <b>ONGOING. Update in report</b>
Investigation and management of Definitive Map and Statement modification applications under the Wildlife and Countryside Act 1981	x				x				LM	1 (NCC only)	Legal Orders and Registers Team	Keep a register of applications received. Remove from register once complete. <b>ONGOING</b>
Maintain the interactive map of PRoW					x				LM	1	Legal Orders and Registers Team	Update the interactive map of PRoW <b>ONGOING</b>
Investigation and management of dedication agreements under the Highways Act 1980	x				x				LM	1 (NCC only)	Legal Orders and Registers Team	<b>ONGOING</b>
Update paper and digital records as a result of modification applications, dedication agreements and public path orders.	x				x				LM	1 (NCC only)	Legal Orders and Registers Team	<b>ONGOING</b>
Manage the National Trail in Norfolk	x	x	x	x		x	x		RW	2 Funds from Natural England	Norfolk Trails	Undertake all regular activities associated with managing the National Trail in Norfolk. Produce Annual Report. Complete regular reporting for Natural England. <b>ONGOING/COMPLETED</b>
Manage and develop Norfolk Trails	x	x	x	x	x	x	x		RW	1 = staff time 2 = CIL (Marriott's Way)	Norfolk Trails NCC Highways Team	Undertake all regular activities associated with managing Norfolk Trails. Develop the Kett's Country Trail. Conduct an audit of Angles Way between Harleston and Diss and between Shipmeadow to Earsham looking at access issues and signage. Highlight issues and opportunities for potential projects and funding. CIL funded re-surfacing of Marriott's Way between Costessey and Thorpe Marriott to create an improved commuting route into Norwich. Surface improvements and improved ramp gradients on Marriott's Way at Drayton. <b>ONGOING</b>
Manage the establishment of the England Coast Path in Norfolk	x		x	x	x		x	x	RW	2 Funds from Natural England	Norfolk Trails	Progress Stretch 3 once consultation feedback has been assimilated by Natural England and the route has been agreed. Stretch 4 proposals have been delayed by C-19 : proposals will come forward from Natural England in due course. <b>ONGOING. Update in report</b>

THEME objective	THEME 1	THEME 2	THEME 3	THEME 4	THEME 5	THEME 6	THEME 7	THEME 8	Officer	Resources 1 = staff time (NCC, other partner staff, volunteer	PARTNERS / OWNER	ACTIONS 2021-2022
	THEME objective number →											
<b>PROJECT ↓</b>		x	x	x	x	x	x	x				
Kett's Country Long Distance Trail: creation of a route linking Norwich to Wymondham and creating 5 local circular walks linked to areas of increased development (Wymondham and Hethersett)		x	x					x		CIL funding (2020/21 and 2021/22)	Norfolk Trails Greater Norwich Growth Board	Audit the route and circular walks. Engagement with stakeholders and communities. Install linear route signage. Create circular routes. Produce promotional materials. Some delays experienced due to C-19 but still will be delivered in 2021/22 <b>ONGOING. Update in report</b>
Create or improve access (and biodiversity) through opportunities afforded by the planning system. Training will be provided to local planning authorities on PRoW and the planning system to try and maximize opportunities.			x						DW	1 (NCC) GI Access Officers	GI Access Officers (will deliver project)	Target : training will be provided for 5 local planning authorities. <b>ON HOLD</b>
Creating literature (advice for developers, applicants and planning case officers)			x						DW	1 (NCC) GI Access Officers	GI Access Officers (will deliver project)	Leaflet to be produced and distributed and added to NCC website (and district websites where appropriate) for use by all local planning authorities, developers and applicants <b>ON HOLD</b>
Creation of Strategic Settlement and PRoW plans (s2p2)		x	x	x					DW	1 Staff time (NCC)	GI Access Officers (will deliver project)	s2p2 will be created for 3 growth areas <b>ON HOLD</b>
Norfolk and Suffolk 25 Year Plan for the Environment			x	x	x			x	MH	1 = staff time 2 = nothing secured yet	NCC Environment Team Suffolk County Council UEA Environmental Sciences Wider stakeholder partners	UEA completes compendium of natural assets for Norfolk and Suffolk. Next steps and priorities for action agreed with Steering Group of project partners. Align messaging with NAIP. <b>ONGOING</b>
Norfolk County Council Environment Policy			x	x	x			x		1 = staff time 2 = nothing secured yet	Norfolk County Council	Align messaging with NAIP. <b>ONGOING</b>



PROJECT ↓	THEME objective	THEME objective number →	THEME 1	THEME 2	THEME 3	THEME 4	THEME 5	THEME 6	THEME 7	THEME 8	Officer	Resources 1 = staff time (NCC, other partner staff, volunteer	PARTNERS / OWNER	ACTIONS 2021-2022
	Ash dieback (ADB) - reducing the impacts of ash dieback in Norfolk		x	x	x	x	x	x	x	x	AC	1 NCC Arboriculture Team; NCC Landscape, Ecology and Green Infrastructure Team, Norfolk Trails	NCC Environment Team	Manage linear woodlands (alongside Norfolk Trails : Marriott's Way; Bure Valley Path; Paston Way; Pingo Trail and Weavers' Way). Prioritise inspection of areas known to have high levels of ADB and high levels of use. Rapid ground-truthing of these areas to prioritise sections that require work. Commission tree work as needed and liaise with landowners as appropriate (e.g. on the Weavers' Way). Remove firewood to reduce risk of non- authorised removal and to offset tree work costs through sale of timber and to create litter habitat through arisings. Appropriate surveys for protected species such as bats carried out where appropriate. <b>ONGOING. Update in report</b>
	MONUMENT - EU 2 Seas project to assist people living with dementia and their carers benefit from access to the outdoors.		x		x			x	x	KO		1 NCC Environment Team & NCC Adult Social Services 2 EU funding (2 Seas)	NCC Environment Team	Focus groups with stakeholders and unpaid carers to determine local barriers to greenspace access. Pilot technologies to reduce barriers to access when planning outdoor visits at home (for carers) Pilot technologies to reduce barriers and care burden during outdoor visits Training for those who work in outdoor settings so they can better support the needs of People Living with Disabilities (PLWD) and informal carers. <b>ONGOING</b>
	PROWAD - LINK EU Interreg VB project to help local businesses make the most of the unique environment of the Wash (includes sustainable transport and local access itineraries)				x	x			x	x	KO	1 NCC Environment Team 2 EU funding (2 Seas)	NCC Environment Team	Develop a walking booklet for the Wash and Norfolk Coast based on the successful Coastal Treasures publication - develop food and drink-themed trails in West Norfolk and Lincolnshire; work with partnerships to help further develop Dark Skies festival. <b>ONGOING. Update in report</b>
	MOBI-MIX - EU 2 Seas project to improve take up of cycle hire schemes and other 'shared mobility' schemes in Norwich and to develop 'mobi hubs' where different modes of travel seamlessly converge				x				x		KO	1 NCC Environment Team 2 EU funding	NCC Environment Team	Norwich survey on uptake of cycle hire (September 2020) working with communities, businesses and schools. <b>ONGOING</b>
	ENDURE - EU 2 Seas project to improve the resilience of sand dune systems for flood defence and biodiversity. Visitor management strategy		x		x	x		x			AL	1 NCC Environment Team 2 EU funding (2 Seas)	Norfolk Wildlife Trust National Trust Holkham Estate Natural England Friends of Horsey Seals	Management of visitors to reduce pressure on fragile dune sites in partnership with Norfolk Wildlife Trust and National Trust. Practical physical infrastructure solutions put in place; e.g. rope and post at Winterton along with signage working with Natural England ; working with Holkham Estate to reduce pressures of coast path on dunes on access point to the beach (Burnham end). <b>ONGOING. Update in report</b>

THEME objective	THEME 1	THEME 2	THEME 3	THEME 4	THEME 5	THEME 6	THEME 7	THEME 8	Officer	Resources 1 = staff time (NCC, other partner staff, volunteer	PARTNERS / OWNER	ACTIONS 2021-2022
	THEME objective number →											
<b>PROJECT ↓</b>		x	x	x	x	x	x	x				
Pathways to Greater Norwich to encourage use of PROW				x	x			x		1 NCC Environment Team 2 UEA Impact funding 3 Pathmakers Geovation funding	UEA Pathmakers	Promotion of the heritage routes created through the Pathways to History Project <b>ONGOING</b>
Green Pilgrimage - next steps. To develop a tool to measure the value of green pilgrimage (travel, sustainability, health, environment, heritage)			x					x	MH	1 NCC Environment Team 2 Other	EU European Green Pilgrimage network	Project feasibility study to develop tools which can be used universally across the EU policy area to measure the sustainability and benefit to the economy, environment and society of green pilgrimage. The project will build on results from the successful EU partnership project. <b>ONGOING</b>
The EXPERIENCE project will use experiential tourism to increase visitor numbers from October to March through themed itineraries to address the challenge of seasonality. A minimum of 33% of activities will be suitable for disabled visitors.	x			x			x	x	KO	1 NCC Environment Team 2 EU funding (2 Seas)	NCC Environment Team	Continue recruitment to the EXPERIENCE Norfolk Access Group (ENAG) to advise, inform and consult on accessibility of Norfolk based project itineraries and communications. Continue recruitment to a wider list of organisations or networks willing to survey members with regards to access issues. <b>ONGOING. Update in report</b>
EXPERIENCE will install 6 artworks along long distance walking routes to create a new outdoor Art Trail for Norfolk. Artworks will be placemaking (drawing on local cultural & natural heritage and assets), designed to be at their best in off-season months (to attract off-season visitors), accessible (both in location & in providing sensory experiences for people with disabilities), and sustainable (using sustainable materials/methods, and located in areas which do not cause harm to surroundings).				x			x	x		1=staff time (NCC) 2=External funds received (Interreg FCE)	NCC Environment Team	Work closely with communities & stakeholders in the development of art trail plans and artworks. Scope potential artwork sites for accessibility & sustainability. Issue artist brief and select artists to create & install artworks. Promote art trail to off-season target visitor audiences. <b>ONGOING. Update in report</b>
Delivery of access improvements to Norfolk Trails through externally funded projects such as Experience	x								RW	2=Developer funded 2=Marriotts Way HLF funded	Norfolk Trails / walking and cycling team	Deliver projects with the Greenways Team: Weavers' Way improvements; Holkham improvements. <b>ONGOING</b>
SAIL: enabling older people to stay active. Includes the Mobile Me Outdoors programme facilitating access to the outdoor environment through physical activity, and Dementia Friendly Walks	x			x					SA	2 EU funding	NCC Environment Team	Final conference to share findings with EU partners. <b>COMPLETED?</b>

THEME objective	THEME 1	THEME 2	THEME 3	THEME 4	THEME 5	THEME 6	THEME 7	THEME 8	Officer	Resources 1 = staff time (NCC, other partner staff, volunteer	PARTNERS / OWNER	ACTIONS 2021-2022
THEME objective number →	x	x	x	x	x	x	x	x				
<b>PROJECT ↓</b>												
EXPERIENCE in partnership with Cycling UK will be developing and implementing 5 Cycling Hubs across Norfolk in locations where there will be considerable net gain and added value to enhancing the cycle offer. One of the key factors in hub selection is the local network of trails and routes. Desirability of cycling around and within the hub area, access to cycle routes, National Cycle Network, off-road routes and disused railways being a few of the key determining factors. Two of the hubs have now been selected, Wroxham and Hoveton and Cromer. The 3rd hub will be determined by October 2021 whereupon the 3 Hubs will be launched with designated accessible routes for all abilities ready to promote and capitalise on off-season tourism. A range of existing routes will be plotted, with new promoted routes suggested by the National Routes Advisor. Routes will cover existing access and will not require landowner permissions due to limited resource. Innovative waymarking and interpretation through GPX or printed resources will be offered to guide cyclists and position the cycling activity within the area's natural and cultural identity'.				x			x	x		1=staff time (NCC) 2=External funds received (Interreg FCE)	NCC Environment Team	Development of cycling hubs. <b>ONGOING update in report</b>
Revitalising our Railway (Weavers' Way): creating walking and cycling infrastructure between Aylsham and Stalham including new circular walks.		x	x					x		2=RDPE	NCC Environment Team	Resurfacing at Stalham. Chicanes at Honing; installation of gates at Blickling Road and signage. Creation of 8 new circular walks with waymarking. <b>COMPLETED?</b>
Pushing Ahead - follow on project funded by DfT to encourage Norwich and Great Yarmouth residents to cycling and walk more			x	x		x	x		MA	1 = staff time 2 = DfT grant with match from Public Health, Active Norfolk and Environment	NCC walking and cycling team, Active Norfolk, NCC Public Health and delivery partners such as Pedal Revolution, UEA, Bicycle Links and Cycling UK	Extension of the original project, focusing on public engagement including the beryl bike scheme and beryl e scooter scheme. <b>ONGOING</b>
Burlingham feasibility study - develop a vision for the estate which is owned by NCC to improve access opportunities, seeking CIL and other funding	x	x				x	x		MH	1 = staff time 2 = nothing secured yet	NCC Environment Team	Feasibility study to develop opportunities for Burlingham to align with NCC strategic policies (Norfolk Futures) and 25 year plan for the environment completed. <b>ONGOING update in report</b>
Greenways is a feasibility study looking to develop a greenway network across the county based on three disused railways. The network will link into the Norfolk Trails promoted walking and cycling routes. Greenways offer safe travel routes. Our study focuses on the benefits they bring to health, wellbeing, economy, increased biodiversity, alleviation of congestion and air quality improvements.	x	x	x	x	x	x	x		MHA	1 = staff time 2 = NCC funding	NCC walking and cycling team with assistance from NCC Infrastructure and Laboratories, Sustrans, Active Norfolk and NE.	Delivery of the Greenways programme, including additional feasibility and preliminary studies for the creation and expansion of our Greenways Network. <b>ONGOING update in report</b>



THEME objective	THEME 1	THEME 2	THEME 3	THEME 4	THEME 5	THEME 6	THEME 7	THEME 8	Officer	Resources 1 = staff time (NCC, other partner staff, volunteer	PARTNERS / OWNER	ACTIONS 2021-2022
THEME objective number →	x	x	x	x	x	x	x	x				
<b>PROJECT ↓</b>	x	x	x	x	x	x	x	x				
River Wensum Strategy: missing link to complete the riverside walk between Duke Street and St George's Street in Norwich	x		x				x			1 = staff time 2 = DfT grant awarded to Sustrans (Paths for Everyone) 3 = CIL	NCC Walking and Cycling Team Sustrans Broads Authority	Planning submission to be completed following design agreement from partners Norwich City Council, Broads Authority and Sustrans. <b>ONGOING</b>
Engage community and user groups in the development and delivery of projects and events to improve or manage access such as the Traffic regulation orders for the Long Stratton bypass and associated housing.						x			DW	1 Staff time (NCC)	GI Access Officers (will deliver project). Legal orders and Registers	Full consultation on community impacts and opportunities on PRoW resulting from development in Long Stratton. <b>ONGOING</b>
Improve access to jobs, training and retail and improve air quality by reducing vehicular transport through DfT Transforming Cities fund allocated to Norfolk County Council, in partnership with Norwich City Council, Broadland District Council and South Norfolk Council.		x	x				x		MA	1 = staff time 2 = NCC, DfT grant	NCC Infrastructure team, GNGB, NCC walking and cycling team, public health	Delivery of Transforming Cities Tranche 1 schemes such as the off-road cycle route between Wymondham and Norwich; Tranche 2 underway (Tombland, Marriott's Way at Hellesdon). <b>ONGOING</b>
Creation of a new National Trail leaflet for users				x			x	x	RW	1= staff time (NCC)	Norfolk Trails / National Trail	A new leaflet will be created once Stretch 4 of the England Coast Paths is completed. <b>ON HOLD</b>
Delivery of Walking and Cycling Festival during October 2020 (Norfolkwide)				x					MHA	2=Coastal Treasures	Norfolk Trails / National Trail	Festival cancelled owing to C-19. <b>CANCELLED</b>
Improvement of linear and circular walks targeted on growth areas that link with the National Trail in Norfolk (Wells next the Sea and Holkham)		x							RW	2 external funding (RDPE)	NCC Environment Team	Promotion of the new circular walk at Holkham and the improved surface on the coast path between Holkham and Wells. <b>COMPLETED</b>
Improve woodland and create a woodland trail at Newman Road in Rackheath with interpretation of the site's USAF air base past and biodiversity	x	x	x	x		x				2 Broadland District Council	NCC Environment Team Broadland District Council	Undertake tree work; enhance biodiversity and reduce damage to WW2 remains, create an archaeological conservation management plan and ecological plan; create interpretation panels and leaflet; install benches and cycle rack. <b>COMPLETED - update in report</b>
Improve access to green space in the Thorpe Marriott area through the creation of a woodland path (Thorpe Marriott Woodland Path) connecting areas of housing with 3 woodlands owned by Broadland District Council and the NDR green bridge leading to Drayton Drewary, a registered common and County Wildlife Site	x					x				2 CIL, Openreach	NCC Environment Team Broadland District Council	Tree work; improve surfacing; install waymarking and interpretation - <b>COMPLETED</b>
Manage linear woodlands (general issues - i.e. not ADB related) on the Norfolk Coast Path National Trail, Marriott's Way, Weavers' Way, Bure Valley Way, Paston Way and Pingo Trail.	x	x	x	x					AC/TRG	1 NCC Arboriculture Team; NCC Landscape, Ecology and Green Infrastructure Team, Norfolk Trails	NCC Environment Team	Support Norfolk Trails Team in providing recommendations for tree work to complement and improve the condition of the Trails network. <b>ONGOING</b>
Parish Paths Seminars - follow on programme to encourage greater involvement with Public Rights of Way in communities	x			x		x			NLAF	1: NCC officers and NLAF volunteers (PRoW; permissive access; NAIP subgroups)	NCC Environment and NLAF subgroup	Contact all parishes in Norfolk by email, sending them the information pack produced for the 2019/2020 Parish Paths seminars. <b>COMPLETED - update in report</b>

THEME objective	THEME 1	THEME 2	THEME 3	THEME 4	THEME 5	THEME 6	THEME 7	THEME 8	Officer	Resources 1 = staff time (NCC, other partner staff, volunteer	PARTNERS / OWNER	ACTIONS 2021-2022
	THEME 1	THEME 2	THEME 3	THEME 4	THEME 5	THEME 6	THEME 7	THEME 8				
THEME objective number →	x	x	x	x	x	x	x	x				
<b>PROJECT ↓</b>	x	x	x	x	x	x	x	x				
Support the Norfolk Local Access Forum and its subgroups (administrative support for volunteer members) and develop collaborative working with the BLAF and SLAF where possible, building on findings of UEA student consultancy report						x			MA	1: NCC officers and NLAF volunteers (subgroups)	NCC Environment; NCC Democratic Services and NLAF subgroups	Provide technical and administrative support for 4 full meetings (April, July, October and January) and subgroup meetings (NAIP, Permissive Access, PRoW) as agreed with subgroup chairs, to enable the NLAF to undertake their advisory role as effectively as possible. e.g.: manage the forward meeting plan; help draft reports; prepare agendas; write up meetings etc. Technical input from GI access officers and Countryside Access staff when needed. <b>ONGOING</b>
Improve public profile of the NLAF / Pathmakers (communications plan)				x					NLAF	1: NLAF volunteers (joint NLAF/Pathmakers communications sub group)	NLAF / Pathmakers	Publish a joint communications plan for the NLAF/ Pathmakers <b>ONGOING</b>
Prepare an annual report on NLAF/Pathmakers activities						x			Pathmakers	1: NLAF volunteers (joint NLAF/Pathmakers communications sub group); NCC Environment Team support	NLAF / Pathmakers	Publish annual report. <b>ONGOING</b>
Support Pathmakers (the Norfolk Local Access Forum's charity) in its work to develop community access projects. Provide small levels of administrative assistance for trustee meetings and with funding applications						x			KO	1: Pathmakers Trustees	Pathmakers	Provide small level of administrative capacity to enable the charity to operate effectively. <b>ONGOING</b>
Attract funding for NAIP priority local access projects						x			KO	1: NCC officers and Pathmakers trustees (NLAF volunteers)	Pathmakers	Provide specialist advice and support to enable Pathmakers make funding bids. <b>ONGOING</b>
Review of the Local Transport Plan			x				x		MA	1 NCC	NCC	Conduct consultation with residents, local businesses and key stakeholders on the Local Transport Plan to find out their main concerns for the future of transport (including support for active travel) in Norfolk and to establish where they feel NCC should prioritise resources. <b>COMPLETED</b>
Refresh the Norfolk Cycling and Walking Strategy			x	x			x		MA	1 NCC	NCC Partners	Update the Norfolk Cycling and Walking Strategy and consult. <b>ONGOING</b>
Local Cycling and Walking Investment Plans (LCWIP) to drive prioritised development of cycling and walking improvements			x	x			x		MA	1= staff time (NCC)	NCC Environment	Create Norwich LCWIP (for ultimate incorporation into Norwich Area Transportation Strategy). <b>COMPLETED</b> Create LCWIPs for Dereham, Great Yarmouth and King's Lynn. <b>ONGOING</b>

## Norfolk Local Access Forum (Forum member report)



<b>Report title:</b>	Pathmakers.
<b>Date of meeting:</b>	6 <sup>th</sup> October 2021

### Summary

The work with OneAgency on our online brochure and comms plan continues and should be completed shortly. We continue to apply for funding. We are looking at issuing Boards to Villages in the County showing local public rights of way.

1.	<b>Proposal</b>
1.1.	n/a
2.	<b>Recommendations</b>
2.1.	n/a
3.	<b>Evidence</b>
3.1.	n/a

If you have any questions about this report please get in touch with:

<b>NLAF member name :</b>	<b>Simon Fowler</b>
<b>Email address</b>	<b>simonfowler5@gmail.com</b>



If you need this report in large print, audio, braille, alternative format or in a different language please contact [nlaf@norfolk.gov.uk](mailto:nlaf@norfolk.gov.uk) and we will do our best to help.

# Norfolk Local Access Forum Committee

<b>Decision making report title:</b>	<b>MONUMENT Project</b>
<b>Date of meeting:</b>	<b>6th October 2021</b>
<b>Responsible Cabinet Member:</b>	<b>Cllr Andy Grant (Cabinet Member for Environment and Waste)</b>
<b>Responsible Director:</b>	<b>Steve Miller (Director of Culture &amp; Heritage)</b>
<b>Is this a key decision?</b>	<b>No</b>
<p><b>Introduction from Cabinet Member</b></p> <p>N/A</p> <p><b>Executive Summary</b></p> <p>MONUMENT is a trans-national technological and social innovation project which aims to strengthen the resilience of informal carers of people living with dementia, giving them the tools to care for the person living with dementia at home for longer. This will be done through professional and structural support based on the principles of the bottom-up Dutch Odensehuis model alongside the application of technological solutions to solve barriers identified by carers themselves.</p> <p>Locally, the Environment service at Norfolk County Council will be focusing the local pilot project on reducing the barriers identified by carers of people living with dementia in accessing the outdoors and its associated health benefits. This work will be focused on specific pilot locations. The Environment Service are working alongside colleagues in Adult Social Services to ensure learning and opportunities from this project are embedded within our wider work.</p> <p>In Norfolk, funding totalling €472,545 is being provided by the European Union via the European Regional Development Fund's Interreg 2 Seas Programme. Contributions of cash and staff match funding has been provided by both the Environment Service and Adult Social Services.</p> <p><b>Recommendations</b></p> <ol style="list-style-type: none"> <li><b>To note work in progress to establish the MONUMENT Pilot Project within Norfolk.</b></li> </ol>	

## 1. Background and Purpose

- 1.1. The project has so far developed a scoping report; built relationships within social care networks; begun implementation of a Communications Strategy;

delivered stakeholder and unpaid carer focus groups to gauge grassroots views on the barriers to outdoor access; and commissioned Dementia Adventure as a training provider. Dementia Adventure will provide bespoke person-centred training on outdoor access to unpaid carers of people living with mild to moderate dementia in Norfolk, including those still awaiting a formal diagnosis. The training program will also deliver to existing community volunteers and nature leisure professionals who are interested in adding dementia-friendly outdoor activities into their offer.

- 1.2. The delivery team is now focused on developing and delivering the local pilot outputs including the training program; informal peer support; leisure activities and exploring improvements to existing technology. Work is ongoing with Active Norfolk to implement accessibility relevant filters and features within their new Activity Finder for Norfolk and its interactive map of greenspace leisure, ensuring this resource is as accessible and relevant to as wide an audience as possible. These features have been identified with input from the focus groups.
- 1.3. The local MONUMENT Steering group is comprised of officers from both the Environment Service and Adult Social Service colleagues with expertise in unpaid carers, dementia and prevention services such as Assistive Technology. The project includes an evaluation at project level and a local evaluation of the project impact in Norfolk specifically related to accessing the outdoors. All materials, reports and case studies will be made available to local stakeholders and policymakers to ensure a legacy post-project.

## **2. Proposals**

- 2.1. N/A

## **3. Impact of the Proposal**

- 3.1. N/A

## **4. Evidence and Reasons for Decision**

- 4.1. N/A

## **5. Alternative Options**

- 5.1. N/A

## **6. Financial Implications**

- 6.1. N/A

## **7. Resource Implications**

- 7.1. **Staff:**

N/A

- 7.2. **Property:**

N/A

- 7.3. IT:  
N/A
- 8. Other Implications**
  - 8.1. Legal Implications  
N/A
  - 8.2. Human Rights implications  
N/A
  - 8.3. Equality Impact Assessment  
N/A
  - 8.4. Health and Safety implications  
N/A
  - 8.5. Sustainability implications  
N/A
  - 8.6. Any other implications
- 9. Risk Implications/Assessment**
  - 9.1. N/A
- 10. Select Committee comments**
  - 10.1. N/A
- 11. Recommendations**
  - 11.1. To note work in progress to establish the MONUMENT Pilot Project within Norfolk.
- 12. Background Papers**
  - 12.1. N/A



## Officer Contact

If you have any questions about matters contained in this paper, please get in touch with:

**Officer name:** Annabelle Fortuna      **Tel No.:** \*\*\*

**Email address:** [annabelle.fortuna2@norfolk.gov.uk](mailto:annabelle.fortuna2@norfolk.gov.uk)



If you need this report in large print, audio, braille, alternative format or in a different language please contact 0344 800 8020 or 0344 800 8011 (textphone) and we will do our best to help.

# Local Access Forum

<b>Report title:</b>	<b>Countryside Access Arrangements Update</b>
<b>Date of meeting:</b>	<b>06 October 2021</b>
<b>Responsible Officer:</b>	<b>Steve Miller, Director, Culture and Heritage</b>
<b>Strategic impact</b> To address the concerns raised by the Local Access Forum with regards to Public Rights of Way Management and delivering the service in an economic and cost-effective way.	

## Executive summary

At the July 2017 Local Access Forum (NLAF), it was agreed that at each future meeting, a summary of the work the Countryside Access Officers and Environment teams would be provided. At the October 2017 NLAF it was agreed that this report should be presented to the PROW sub-group prior to being brought to NLAF.

This paper highlights this work in terms of the volumes of customer queries received and responded to. The paper also highlights other key areas of work.

### Recommendations:

- 1. That the Local Access Forum note the progress made to date since the Countryside Access Officer posts were introduced.**

## 1. Introduction

- 1.1. Since 1 April 2017, there is a single point of contact within each Highways Area office being responsible for their local rights of way issues. By having the officer within the Area office, they are more “on the ground” and better placed to deal with the operational reactive issues that occur when managing rights of way. They are supported by the wider Highways Area team staff. In addition, the Norfolk Trails team sits within the Environment Service at County Hall and carries out strategic and developmental aspects of developing the countryside access network.

## 2. Performance

- 2.1. The information in **Appendix A** summarises the performance information available for the complete months since the last report.
- 2.2. The new CRM defect reporting system went live in March 2018. Defect notes are being made visible to the public in the automatic update emails sent when third party defects have been inspected & more status options available on tablets under the ‘No Defect’ category, as previously reported.  
Minor updates continue to be made to CRM to enhance operation and feedback elements.  
The provision of additional information appears to have led to a decrease in follow up requests.
- 2.3. A new report has been prepared to display the relevant PROW/Trails information via PowerBI – **Appendix A (Stats for the last 3 months and 2 years)**.
- 2.4. In summary, the Mayrise system of logged requests for service had at 7<sup>th</sup> September 2021 1386 open issues for Public Rights of Way. There were an additional ? logged to the Trails Team members. Most enquiries received continue to be regarding damaged or missing signs, non-reinstatement, obstructions, overgrown surface, overgrown hedges/ trees and surface condition.
- 2.5. The significant rise in cases is primarily attributed to the impact of Covid 19. While

the country went into lockdown Central Government advice was that local outdoor exercise was promoted for wellbeing and there was evidence of significant increases in walking, running and cycling on village/local path networks across the Country. There were also isolated cases of landowners using Covid as an excuse to close some paths. Naturally, additional use has led to an increase in complaints about the condition of the local path network. This has been recognised within the ROW profession nationally and some LA's are now re-evaluating the importance of adequately maintaining local path networks. There is likely to be continued growth in numbers as the summer season approaches and more "Staycations" are taken.

- 2.6. At the current time there are no additional financial resources earmarked for PROW maintenance. There are proposals to employ additional staff resource, one for each of the 3 Highway areas on an 18 month temporary basis to try and tackle some of the backlog. 3 x PROW Technicians commence their roles in mid September 2021, one each in support of Countryside Access Officer for the three highway areas.
- 2.7. As of the 1 June, the Norfolk Trails Team had 133 open CRM issues.  
Highways had 173 open CRM issues
- 2.8. These figures do not reflect the substantial volume of reports and correspondence still received through direct email and telephone communication from members of the public.
- 2.9. In addition to the numbers above, there have been a number of enforcement notices sent out to landowners since March 2021. The figures include more informal email conversations where the landowner is politely reminded that enforcement may follow if action is not forthcoming. The following have been issued:
  - 74 Section 131A, 134-137 Non-reinstatement Notices/emails issued. The majority are resolved without recourse to further enforcement. It should be noted that there are significant resource pressures associated with serving and following up on Notices.
  - During 2020/21, 0 Section 130's (obstructions) or s56 (out of repair) notices have been received by NCC
- 2.10. It should be noted that processing any legal notices is time consuming for NCC staff.
- 2.11. In terms of other progress, key highlights include:
  - Higher incidences of people using local paths during Covid and continuing into 2021 is likely to be the main reason. Also the wet winter 20/21 saw an increase in flooding reports and associated bridge damage. These issues are still being worked through.
  - 2021 summer cutting underway from end of May. PROW routes will get one cut, some paths get a second cut, subject to funding. Trails routes receive 3 cuts. Unprecedented spring growth and in some areas as a result of missed cutting in 2020 has slowed progress. The first cut was completed albeit behind schedule and the second cut is now well underway
  - Enforcement procedures were carried out on a path at Upwell removing gates but the landowner replaced immediately. NCC considering next steps to resolve. No further progress to date
  - Of the £200k capital works the majority has been allocated, the latest project currently underway is at Cley next the Sea where NCC have contributed to path restoration works being undertaken by the Environment Agency.  
Covid has delayed progress in some areas and any remaining budget in the Capital works allocation will be carried over into 2021/2.
  - The £15k "Urban paths" allocation completed for 2020/1. This is a yearly scheme and a shortlist for urban schemes will be drawn up for 2021/2.

2.12. **Norfolk Trails update**

2.13. **Repairs and Improvements on Norfolk Trails Network**

Attached are a series of images which shows the before and after repairs that have been completed since the last LAF meeting in 2021 on the Trails Network. This is just a snapshot of the repairs completed during this time.

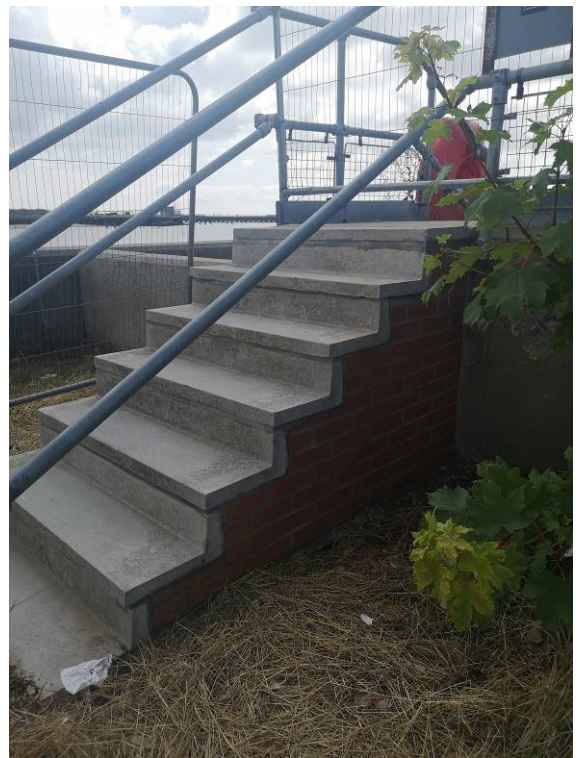
**Gorleston step repairs**



Before



After





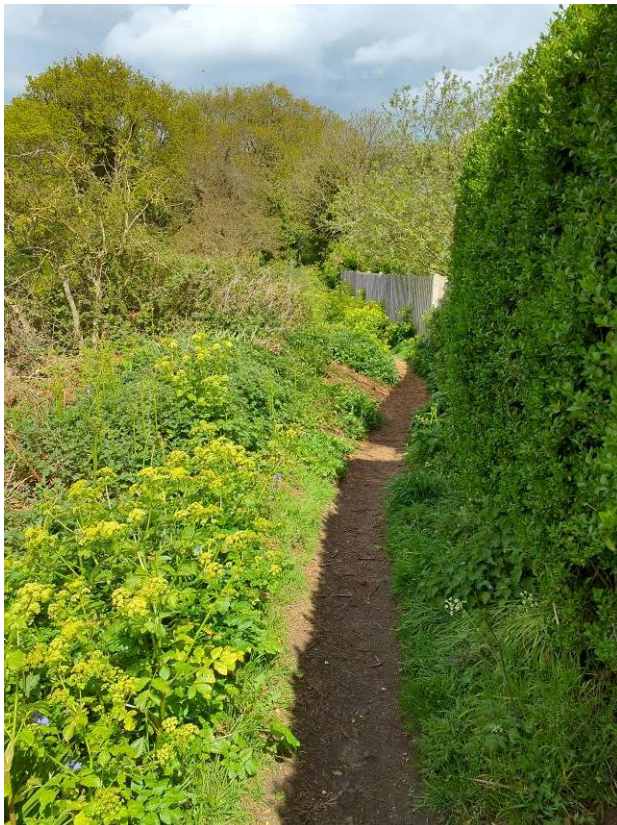
## **Beeston bump step replacement and side rail repairs**



Carried out by hand by the trails team on one of the hottest days of the year!!

## **Cromer FP7 stage 1**

Working with the parish council to identify and then improve a right of way



**Before image**



**After image**



### 3. New cutting contract

- 3.1. The first cut has been completed and the second cut is now well underway across the network.

Additional cuts have had to be carried out largely because of side vegetation growth rather than ground vegetation growth. This has been delivered through a combination of additional cuts by the contractors, working with the Ramblers and getting landowners to assist.



Before additional cut



After additional cut

### 4. Financial Implications

- 4.1. None arising from this report

### 5. Issues, risks and innovation

5.1

#### 5.2 Highways England Meeting update

5.3 Verbal update to be given

5.4

5.5

### 6. Background

- 6.1. Please see introduction

### Officer Contact

If you have any questions about matters contained in this paper or want to see copies of any assessments, eg equality impact assessment, please get in touch with:

**Officer name :** Jason Moore  
Russell Wilson

**Tel No:** 01553 778002  
**Tel No.** 01603 223383

**Email address :** [jason.moorse@norfolk.gov.uk](mailto:jason.moorse@norfolk.gov.uk)  
Russell.wilson@norfolk.gov.uk



If you need this report in large print, audio, braille, alternative format or in a different language please contact 0344 800 8020 or 0344 800 8011 (textphone) and we will do our best to help.

PROW and Trail Defect Report

The information presented on this page looks at PROW and Trail defects reports. PROW & Trail defect reports are sent to Mayrise mobile tablets for investigation by the relevant team.

Alter the Report Date Range in the top right hand corner to see FAQs received over a

Volume of PROW/Trail defects by type

DescriptionOfFault	C	N	S	W	Total	
PROW - Overgrown surface -e.g. grass/weeds	2	216	162	57	437	
PROW - Overgrown hedge/tree	4	75	64	18	161	
Trail - Overgrown surface -e.g. grass/weeds	7	70	45	18	140	
PROW - Crops/ploughing affecting footpath		68	41	21	130	
PROW - Damaged or missing sign		32	61	13	106	
Trail - Overgrown hedge/tree	9	29	29	9	76	
PROW - Obstruction -e.g. building works, fences, ditches, locked gate		9	25	11	45	
PROW - Surface condition		19	14	8	41	
PROW - Bridge		3	28	5	36	
PROW - Tree dangerous/fallen		15	12	2	29	
PROW - Gate/Barrier		4	17	6	27	
Trail - Damaged or missing sign		14	6	2	22	
PROW - Stile damaged/too/high/other		14	6		20	
Trail - Surface condition	1	1	11	5	1	19
PROW - Misleading sign		6	7	1	14	
Trail - Gate/Barrier	1	9	2	1	13	
PROW - Illegal / Vehicle Use		9	1	2	12	
Trail- Obstruction -e.g. building works, fences, ditches, locked gate		4	4	2	10	
Trail - Tree dangerous/fallen	3	2	3		8	
PROW - Animal(s)	1	4	2		7	
PROW - Flooded Path		4	1	2	7	
PROW - Steps damaged/other		4	2	1	7	
Trail - Bridge	1	1	4	1	7	
Trail - Illegal / Vehicle Use	1	2	3	1	7	
Trail - Flooded Path	1	2	1		4	
Trail - Steps damaged/other		2	2		4	
Trail - Animal(s)	1		1	1	3	
Trail - Crops/ploughing affecting footpath	1	1	1		3	
Trail - Misleading sign				2	2	
Trail- Stile damaaed/too/high/other		1			1	
Total	1	33	630	549	185	1398

Report Date Range

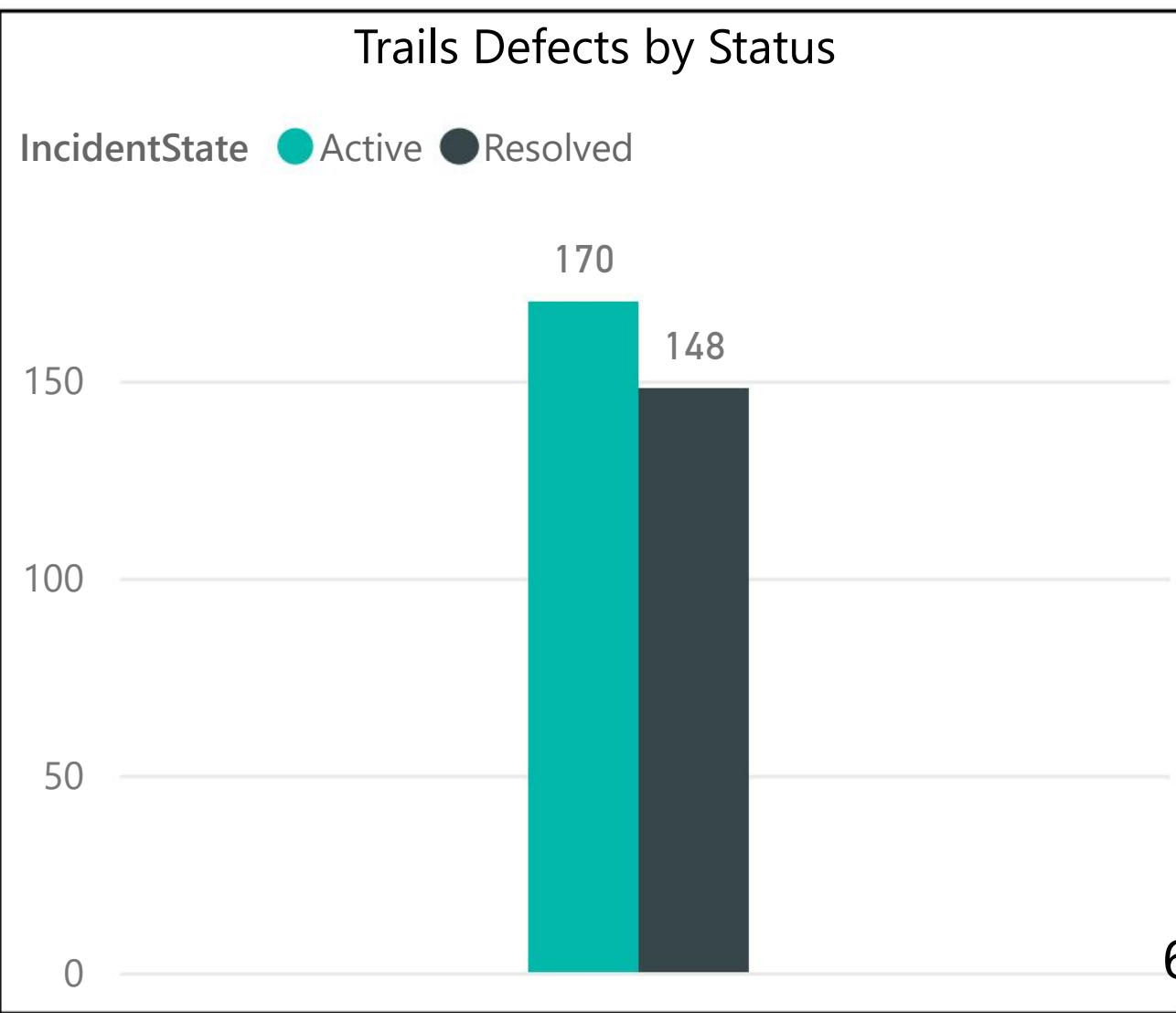
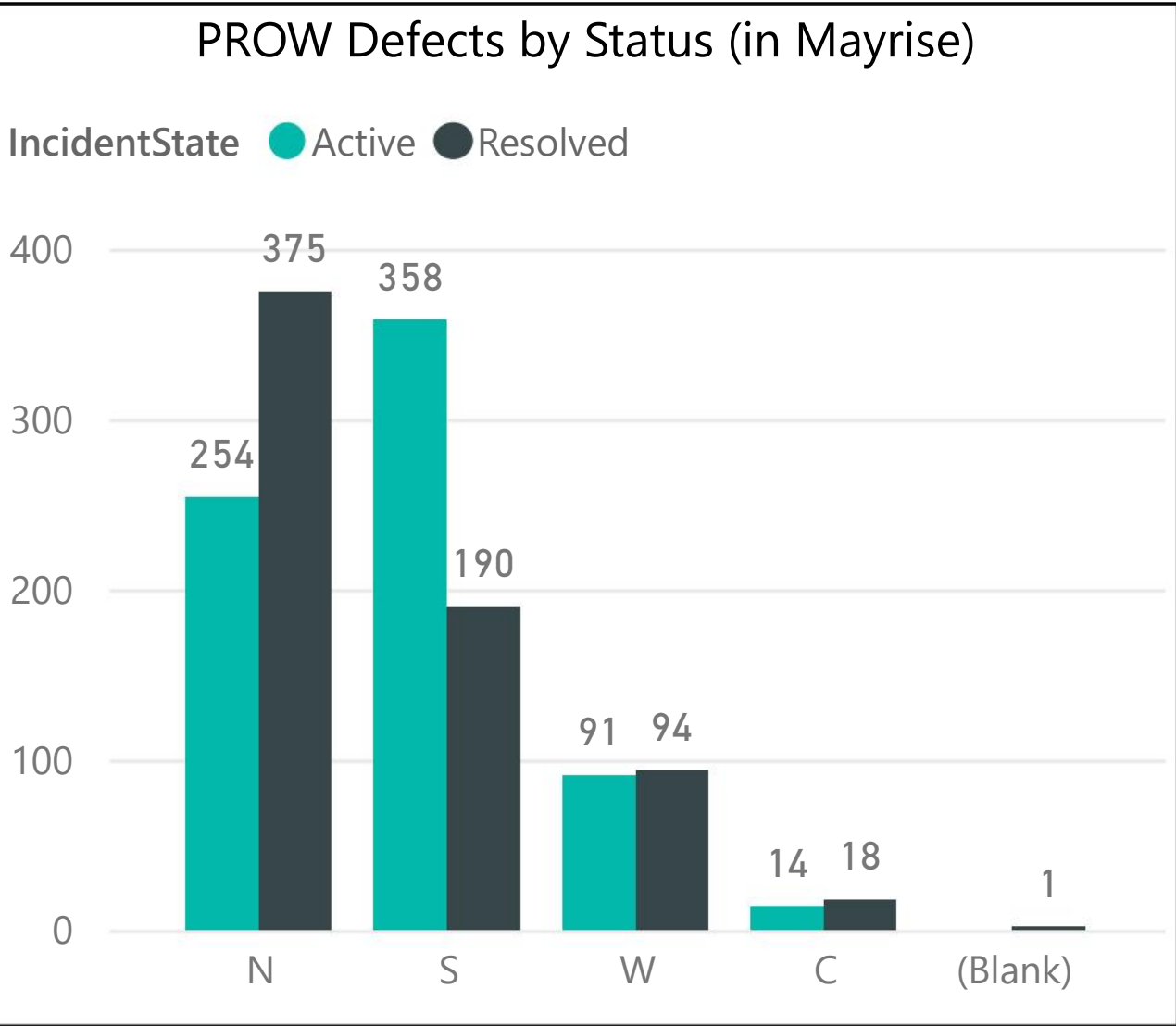
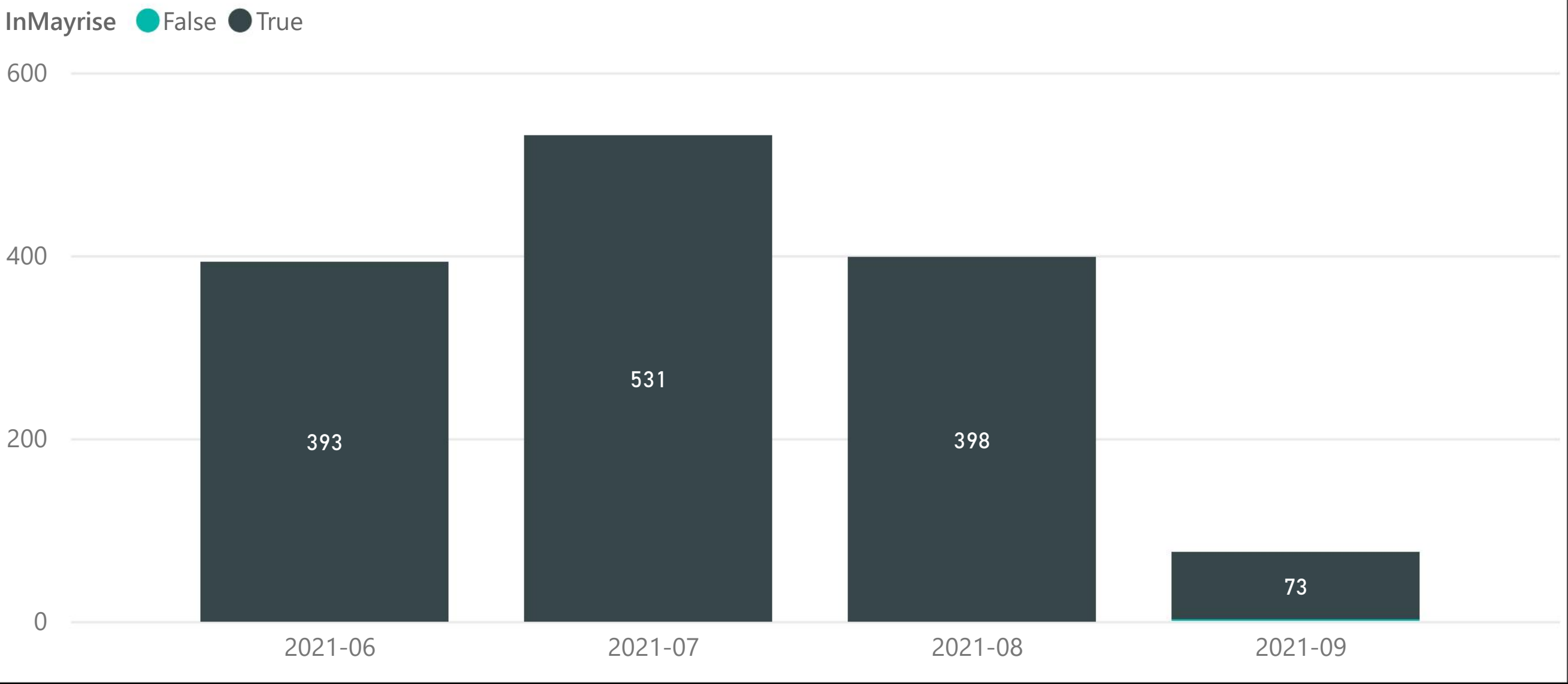
Last

3

Months

10/06/2021 - 09/09/2021

PROW and Trail defects received by month



PROW and Trail Defect Report

The information presented on this page looks at PROW and Trail defects reports. PROW & Trail defect reports are sent to Mayrise mobile tablets for investigation by the relevant team.

Alter the Report Date Range in the top right hand corner to see FAQs received over a

Volume of PROW/Trail defects by type

DescriptionOfFault	C	N	S	W	Total	
PROW - Damaged or missing sign		309	481	104	894	
PROW - Overgrown surface -e.g. grass/weeds	3	415	310	114	842	
PROW - Crops/ploughing affecting footpath		337	250	67	654	
PROW - Obstruction -e.g. building works, fences, ditches, locked gate	1	1	224	292	87	605
PROW - Overgrown hedge/tree	6	219	206	88	519	
PROW - Surface condition		173	113	88	374	
PROW - Tree dangerous/fallen	3	176	94	40	313	
PROW - Gate/Barrier	1	102	111	70	284	
Trail - Overgrown surface -e.g. grass/weeds	10	130	72	30	242	
PROW - Bridge		34	184	18	236	
Trail - Surface condition	4	6	104	62	34	210
Trail - Overgrown hedge/tree	14	83	58	17	172	
Trail - Damaged or missing sign		75	78	13	166	
PROW - Misleading sign	1	1	79	55	22	158
Trail - Tree dangerous/fallen	5	9	74	49	11	148
PROW - Stile damaged/too/high/other		54	72	6	132	
Trail- Obstruction -e.g. building works, fences, ditches, locked gate	3	3	69	37	8	120
PROW - Illegal / Vehicle Use	1	50	29	29	109	
PROW - Flooded Path		33	27	21	81	
Trail - Gate/Barrier	2	33	31	6	72	
Trail - Bridge	5	15	29	12	61	
PROW - Animal(s)	2	25	25	5	57	
Trail - Flooded Path	1	23	27	5	56	
Trail - Crops/ploughing affecting footpath	1	8	38		47	
Trail - Illegal / Vehicle Use	2	25	13	6	46	
PROW - Steps damaged/other		21	20	3	44	
Trail - Steps damaged/other	1	2	18	6	5	32
Trail - Misleading sign		11	11	7	29	
Trail- Stile damaged/too/high/other		10	10		20	
Trail - Animal(s)	1	7	7	4	19	
Total	15	74	2938	2797	920	6744

Report Date Range

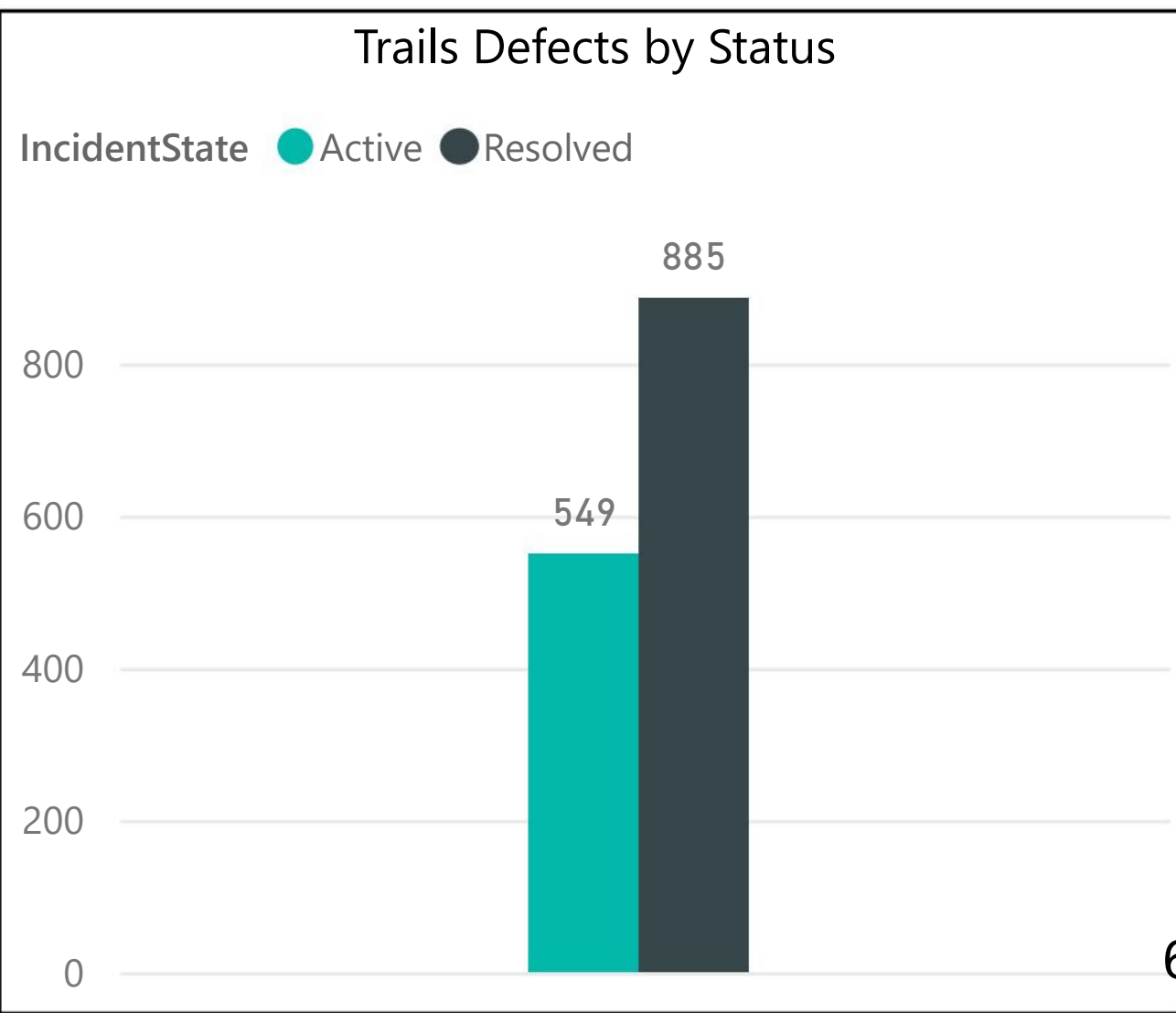
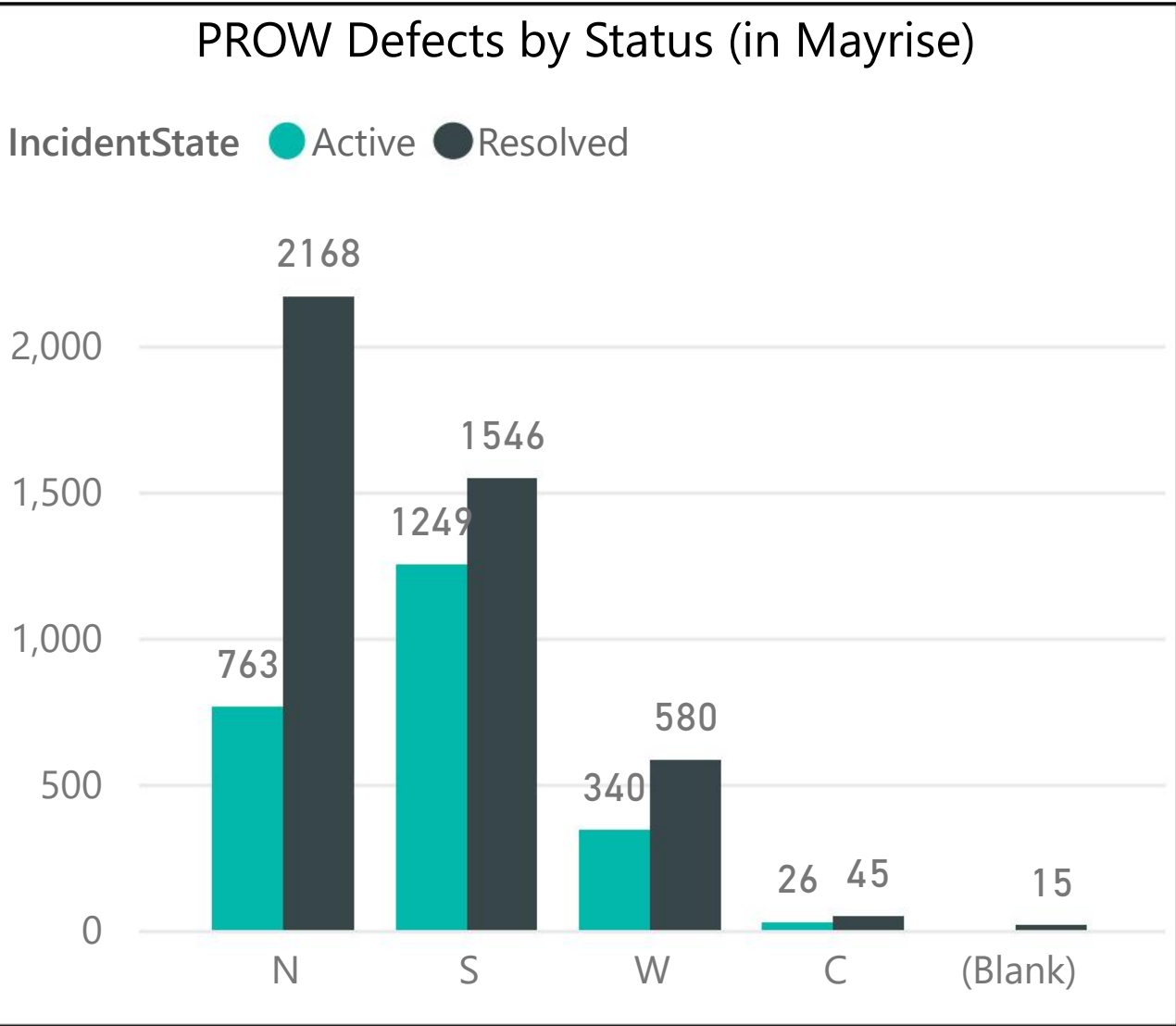
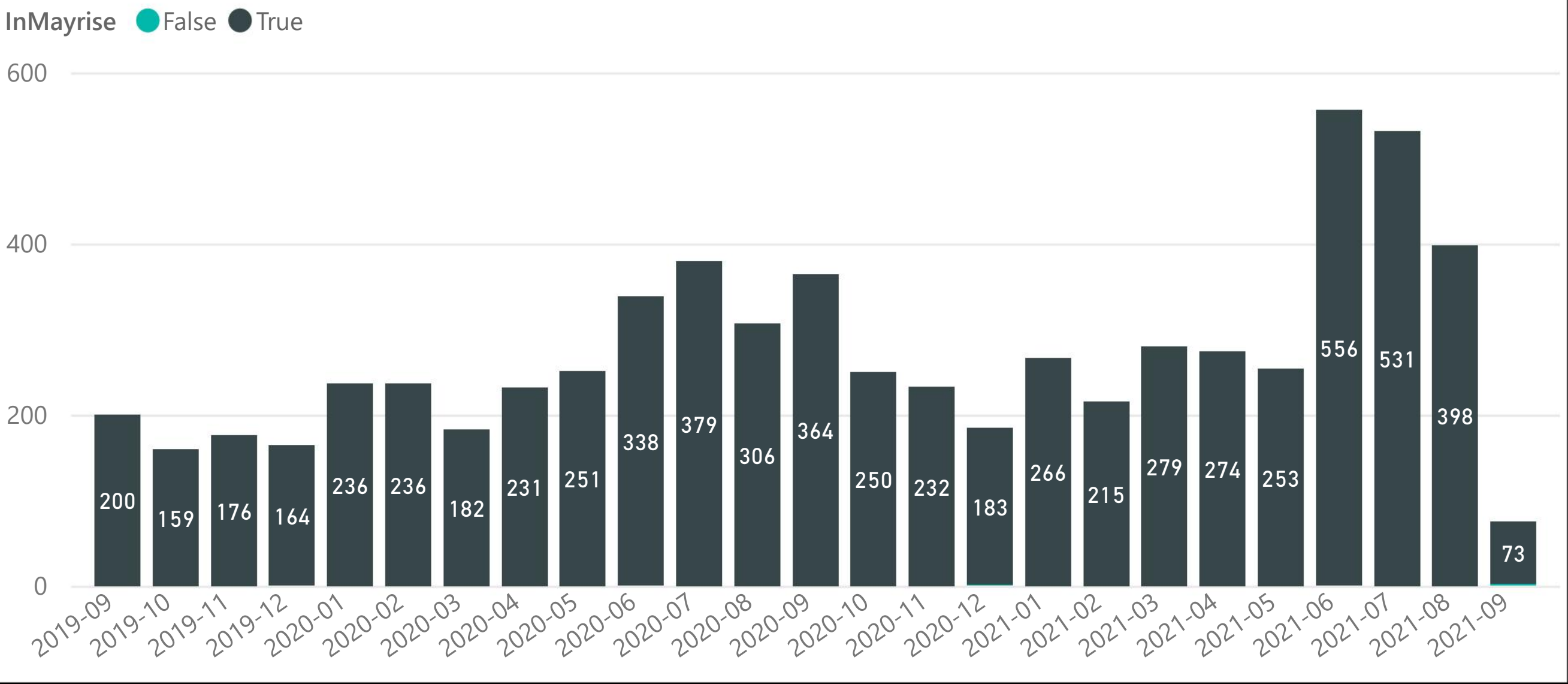
Last

2

Years

10/09/2019 - 09/09/2021

PROW and Trail defects received by month



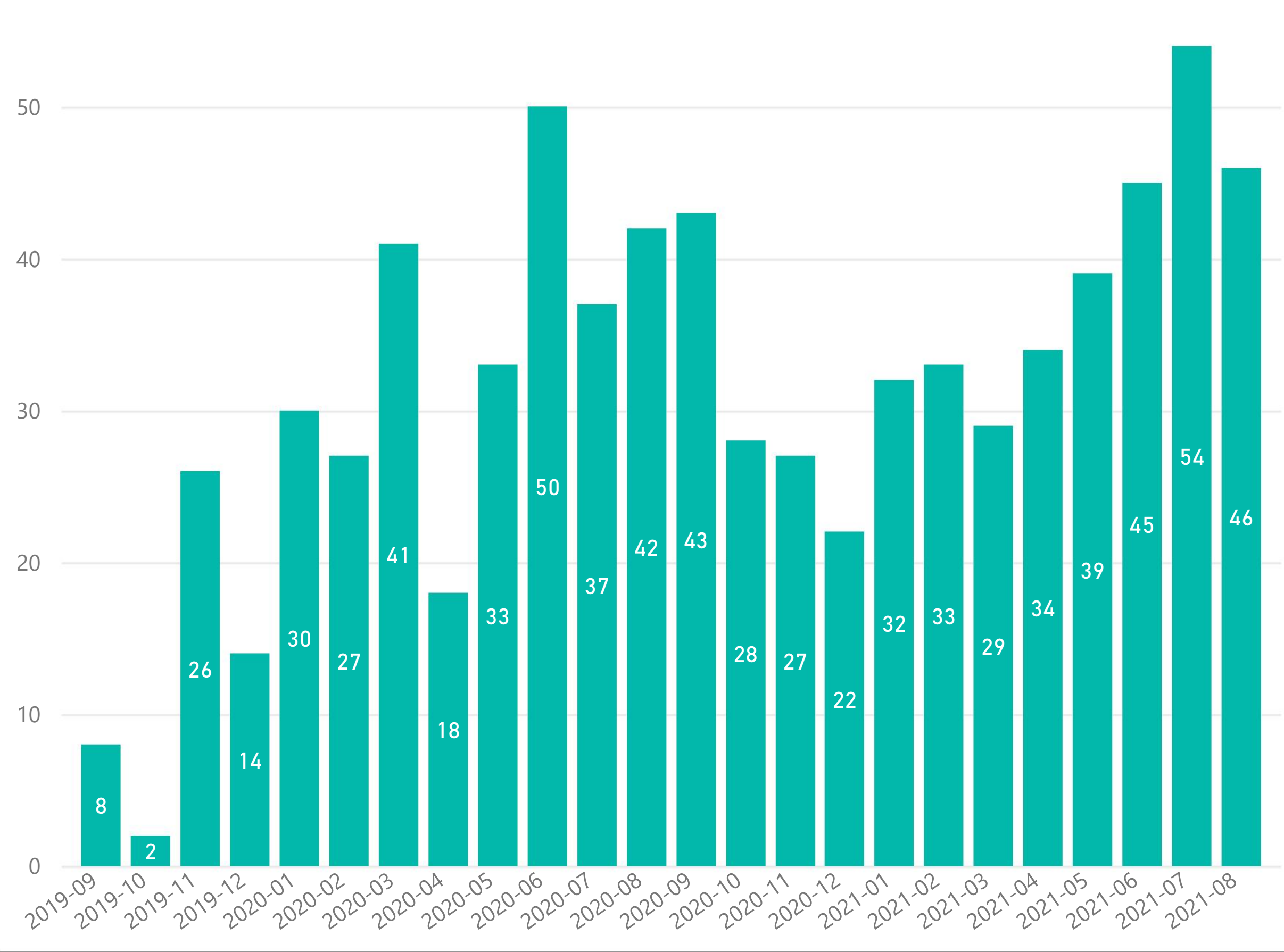
## Public Right of Way and Trail FAQ Report

FAQs relate to all enquiries made by customers that include queries on policy, information requests, formal notices and chasing requests. These are logged by the Customer Service Centre and managed within the Customer Relationship Management System (CRM).

These present to either the PROW 'queue' (managed by Countryside Access Officers) or the Trails queue (managed by the Environment team).

Alter the Report Date Range in the top right hand corner to see FAQs received over a different time period.

Volume of PROW/Trail FAQs received by month



## Report Date Range

Last

24

Months (Calendar)

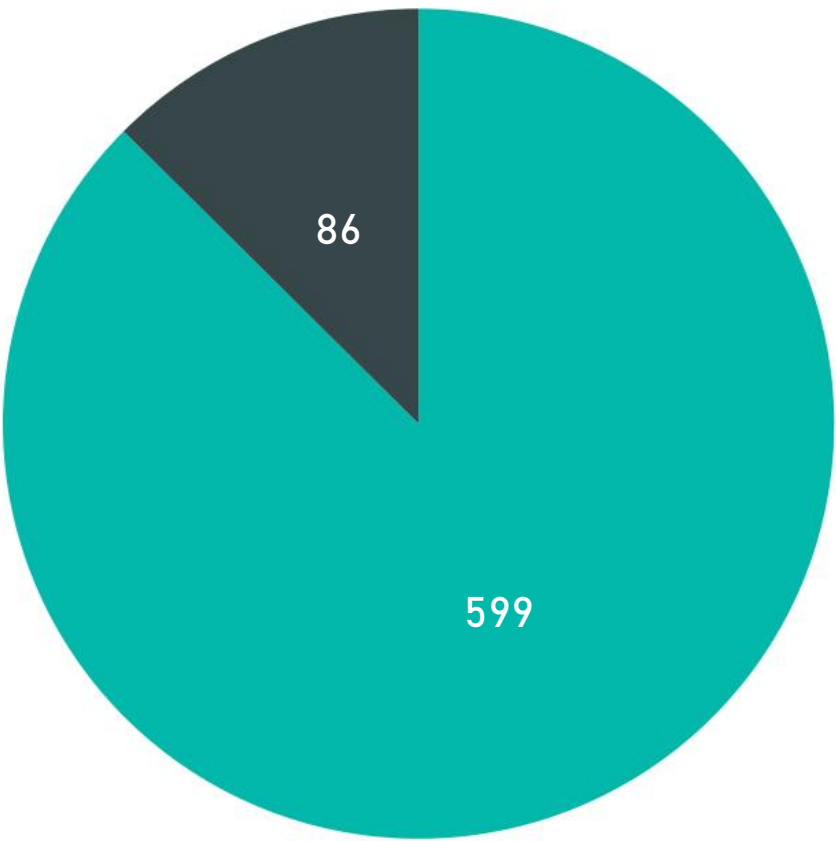
01/09/2019 - 31/08/2021

Volume of PROW/Trail FAQs by question

Question	Count of CaseNumber
I've seen unauthorised cycling, driving or riding on a Public Right of Way or Trail. What can be done?	12
I would like information about a Norfolk Trail	31
I have an enquiry about PROW ot Trail grass cutting	34
I have an enquiry about the definitive map	38
	40
I have an enquiry concerning common land	42
I have an enquiry about a PROW or would like to speak to a PROW officer	563
Total	760

PROW/Trail FAQs received by Status

IncidentState Resolved Active



# Norfolk Local Access Forum Committee

Item No: 16

<b>Decision making report title:</b>	<b>NCC member Sustainable Travel Champion update</b>
<b>Date of meeting:</b>	<b>06 October 2021</b>
<b>Responsible Cabinet Member:</b>	<b>Cllr Andy Grant, Cabinet Member- Environment and Waste</b>
<b>Responsible Director:</b>	<b>Steve Miller, Director of Culture &amp; Heritage</b>
<b>Is this a key decision?</b>	<b>No</b>
<p><b>Executive Summary</b></p> <p>At the July 2019 LAF meeting it was agreed that the Walking and Cycling Champion provide a summary of the key walking and cycling projects relevant to the Local Access Forum. The Walking and Cycling Champion role has subsequently changed to Sustainable Travel Champion.</p> <p><b>Recommendation</b></p> <p><b>1. To note the progress of the below walking and cycling projects by the Local Access Forum committee.</b></p>	

## 1. Background and Purpose

- 1.1 To provide an update to the Local Access Forum on progress on key projects from the Walking and Cycling Team.

## 2. Proposals

- 2.1 Below is an update on key walking and cycling projects to be delivered in 2021.

### 2.2 Local Cycling and Walking Infrastructure Planning (LCWIP)

Draft versions of the Norwich, King's Lynn and Great Yarmouth have been taken to the Infrastructure and development select committee and following approval now will be progressed to Cabinet for sign off.

The Great Yarmouth LCWIP has been out to consultation and received over 300 completed surveys, this feedback is currently under analysis and will be incorporated into the final plan.

### 2.3 DfT Capability Fund- Norfolk Wide LCWIP

Norfolk County Council has been successful in a bid to the Department for Transport to develop a Norfolk Wide LCWIP. This is continue the work already in progress in Norwich, King's Lynn, Great Yarmouth and Dereham and ensure all of Norfolk is covered. The project is currently being set up with start up meetings beginning in October.



## 2.4 **Active Travel Fund- Revenue Funding**

Following the successful bid to the Department of Transport we have been developing the Active Travel Fund to carry on and expand the work that has been delivered through the Pushing Ahead programme across Norfolk. The work plan includes

- Continuing the Work of Cycling UK across Norfolk
- Workplace engagement across Norfolk
- Norfolk wide Attitudinal Survey into Cycling and Walking
- Development of a Travel Norfolk Website
- Pilot of School Streets programme to enable safer walking and cycling to school

## 2.5 **Pushing Ahead**

The Pushing Ahead Project, funded by the Department for Transport's Access Fund, is continuing to deliver projects up to 31st October 2021 that aim to reduce single occupancy car trips and increase active travel in Norwich and Great Yarmouth.

As well as ongoing delivery - such as the Norwich Cycle Loan Scheme and the Community Hubs project, which supports cycling in the community - we have funded the revision and print of the 4th edition of the Norwich Pedalways map and supported the planning of the upcoming School Streets pilot. We have also recently completed a campaign to promote Beryl that included over 3,000 applicants applying for a free 100-minute voucher to use on the bikes located in Norwich.

## 2.6 **E Cycle Extension Fund**

Norfolk County Council were successful in a bid to the Department of Transport to run a project to allow people to trial e bikes. The project is currently being developed and the funding will be fully allocated by March 2022.

The funding will be delivered through a range of initiatives which will include making e-bikes available to trial on free-loan from bicycle shops across the county and increasing the number of E-bikes available for on-street hire through the current [Beryl](#) scheme, which will also see its operating area extended to other parts of Greater Norwich.

The funding will also make adapted e-bikes available and allow the expansion of other incentives, training and e-bike promotion currently delivered through the Council's Pushing Ahead initiative to wider audiences across Norfolk.

## 3. **Impact of the Proposal**

3.1 n/a

## 4. **Evidence and Reasons for Decision**

4.1 n/a

## 5. **Alternative Options**

5.1 n/a



## **6. Financial Implications**

- 6.1 The following funding has been secured to ensure delivery of these projects
- The Local Cycling and Walking Infrastructure planning for King's Lynn is funded by the Borough Council of King's Lynn & West Norfolk.
  - The Active Travel Fund project is funded by the Department for Transport,
  - The Pushing Ahead project is funded by the Department for Transport after a successful bid to the Department for Transport's Access Fund.
  - The E Cycle Extension project is funded by the Department for Transport after a successful bid to the Department for Transport.
  - The Norfolk Wide LCWIP is funded by the Department for Transport after a successful bid to the Capability Fund
  - The upgrade to existing Norfolk Trails Network- is funded by Norfolk County Council internal funding via the National and Norfolk Trails maintenance capital funding.

## **7. Resource Implications**

- 7.1 **Staff:**  
n/a
- 7.2 **Property:**  
n/a
- 7.3 **IT:**  
n/a

## **8. Other Implications**

- 8.1 **Legal Implications**  
n/a
- 8.2 **Human Rights implications**  
n/a
- 8.3 **Equality Impact Assessment (EqIA) (this must be included)**  
n/a
- 8.4 **Health and Safety implications** (where appropriate)  
n/a
- 8.5 **Sustainability implications** (where appropriate)  
n/a
- 8.6 **Any other implications**  
n/a

## **9. Risk Implications/Assessment**

- 9.1 n/a

## **10. Select Committee comments**

- 10.1 n/a

## **11. Recommendations**

- 11.1 1. To note the progress of the below walking and cycling projects by the Local Access Forum committee.

## **12. Background Papers**

- 12.1 n/a

## Officer Contact

If you have any questions about matters contained in this paper, please get in touch with:

**Officer name:** Matt Hayward **Tel No.:** 01603 223315

**Email address:** [Matthew.hayward2@norfolk.gov.uk](mailto:Matthew.hayward2@norfolk.gov.uk)



If you need this report in large print, audio, braille, alternative format or in a different language please contact 0344 800 8020 or 0344 800 8011 (textphone) and we will do our best to help.

# Norfolk Local Access Forum Committee

Item No: 17

<b>Decision making report title:</b>	<b>Major Infrastructure Projects and Planning</b>
<b>Date of meeting:</b>	<b>06 October 2021</b>
<b>Responsible Cabinet Member:</b>	<b>Cllr Andy Grant, Cabinet Member- Environment and Waste</b>
<b>Responsible Director:</b>	<b>Steve Miller, Director of Culture &amp; Heritage</b>
<b>Is this a key decision?</b>	<b>No</b>
<p><b>Executive Summary</b></p> <p>A table of major infrastructure projects in Norfolk (including Nationally Significant Infrastructure Projects (NSIP)) which impact on public rights of way has been made available to the NLAF by NCC Environment Team (Appendix 1).</p> <p><b>Recommendations:</b></p> <p><b>1. To note the table of major infrastructure projects in Norfolk.</b></p>	

## **1. Background and Purpose**

- 1.1. Major infrastructure projects (including Nationally Significant Infrastructure Projects (NSIP)) in Norfolk carry implications for the public rights of way (PRoW) network.
- 1.2. A table of major infrastructure projects which impact of PRoW has been listed by NCC Environment team and made available to the NLAF (Appendix 1).

## **2. Proposals**

- 2.1. That the NLAF notes the table of major infrastructure projects in Norfolk.

## **3. Impact of the Proposal**

- 3.1. See background and proposals

## **4. Evidence and Reasons for Decision**

- 4.1. See background and proposals

## **5. Alternative Options**

- 5.1. See background and proposals

## **6. Financial Implications**

6.1. None as a result of this report.

**7. Resource Implications**

7.1. **Staff:**

N/A

7.2. **Property:**

N/A

7.3. **IT:**

N/A

**8. Other Implications**

8.1. **Legal Implications**

N/A

8.2. **Human Rights implications**

N/A

8.3. **Equality Impact Assessment**

N/A

8.4. **Health and Safety implications**

N/A

8.5. **Sustainability implications**

N/A

8.6. **Any other implications**

**9. Risk Implications/Assessment**

9.1. N/A

**10. Select Committee comments**

10.1. N/A

**11. Recommendations**

11.1. 1. To note the table of major infrastructure projects in Norfolk

**12. Background Papers**

12.1. N/A

## Officer Contact

If you have any questions about matters contained in this paper, please get in touch with:

**Officer name:** Matt Hayward **Tel No.:** 01603 223315

**Email address:** [matthew.hayward2@norfolk.gov.uk](mailto:matthew.hayward2@norfolk.gov.uk)



If you need this report in large print, audio, braille, alternative format or in a different language please contact 0344 800 8020 or 0344 800 8011 (textphone) and we will do our best to help.

# Summary of Nationally Significant Infrastructure Projects (NSIPs) and other Major Strategic Projects impacting on Norfolk

September 2021

1.	Summary of NSIP Proposals – September 2021	
	Proposal (Applicant)	Status / Note
1.1.	Hornsea Project Three – Offshore (2.4 GW) (supplying up to 2 million household with electricity) Wind farm and ancillary onshore grid connection (Orsted);	Hornsea Project Three – Offshore (2.4 GW) (supplying up to 2 million household with electricity) Wind farm and ancillary onshore grid connection (Orsted);
1.2.	<p><b>Norfolk Vanguard</b> - Offshore Wind Farm and ancillary onshore grid connection (Vattenfall) (1.8 GW) (supplying up to 1.3 million household with electricity)</p> <ul style="list-style-type: none"> <li>Landfall at Happisburgh;</li> <li>Grid Connection at Necton</li> </ul> <p>Applicant: Vattenfall (Swedish)</p> <p>For further information:</p> <p><a href="https://group.vattenfall.com/uk/what-we-do/our-projects/vattenfallinnorfolk/norfolk-vanguard">https://group.vattenfall.com/uk/what-we-do/our-projects/vattenfallinnorfolk/norfolk-vanguard</a></p>	<p><b>S56 DCO application</b> reported to EDT Committee on 7 September 2018. Report recommendation agreed with additional (a) Highway; (b) Coastal erosion; and (c) hedgerow issues raised.</p> <p>Examination ran 10/12/18 – 10/6/19</p> <p><b>On 1 July 2020 - The Secretary of State granted a development consent order (DCO)</b> for this project with some modifications to the DCO;</p> <p>Archaeological surveys have been undertaken Q1 and Q2 2020.</p> <p>Preliminary Onshore works could begin in early 2021;</p> <p><b>Decision by the Secretary of State to grant the above DCO was quashed by the High Court on 18 February 2021.</b></p> <p>The Government now needs to redetermine the proposal with regard to the Judge's ruling, which could involve a second Public Examination.</p>
1.3.	<p><b>Boreas (1.8 GW)</b> Offshore Wind Farm and ancillary onshore grid connection (Vattenfall)</p> <ul style="list-style-type: none"> <li>Landfall at Happisburgh;</li> <li>Grid Connection at Necton</li> </ul> <p>Applicant: Vattenfall (Swedish)</p> <p>For further information:</p> <p><a href="https://group.vattenfall.com/uk/what-we-do/our-projects/vattenfallinnorfolk/norfolk-boreas">https://group.vattenfall.com/uk/what-we-do/our-projects/vattenfallinnorfolk/norfolk-boreas</a></p>	<p>This scheme is approximately 12 months behind the Norfolk Vanguard project (sister project) and uses much of the same proposed onshore infrastructure, for example: shared landfall point; cable route/ducts; and grid connection point.</p> <ul style="list-style-type: none"> <li><b>Section 56</b> – reported to Planning and Highways Delegations Committee (19/8/19). Members supported proposal subject to appropriate Planning Requirements being resolved in DCO;</li> <li><b>Examination</b> – hearings were extended to <b>12 October 2020</b> due to Covid-19 restrictions. Hearings now being undertaken using TEAMS;</li> <li>Examination has now finished 12 October 2020. The Examining Authority have three months to make their recommendation to the Secretary of State. The Secretary of State then has 3 months to make his final decision.</li> <li>Awaiting final decision from SoS</li> </ul>



--	--	--

	Highway Projects	
1.4.	<b>Blofield to North Burlingham Dualling Scheme</b> Highways England  <a href="#">Highways England project page</a>	<ul style="list-style-type: none"> <li>14<sup>th</sup> September HE shared current plans based on feedback received as part of autumn 2018 consultation</li> <li>HE submitted the DCO application 30 December 2020. Planning Inspectorate have asked for comments on the Adequacy of Consultation by 14 January 2021. Construction start estimated to be January – March 2022-23</li> <li>End date 2024-25</li> </ul> <p>Planning inspector's hearings from 16<sup>th</sup> August- timetable is available online <a href="#">A47 Blofield to North Burlingham   National Infrastructure Planning (planninginspectorate.gov.uk)</a>, the examination is due to end on the 22<sup>nd</sup> of Dec.</p>
1.5.	<b>(a) A47 / A11 Thickthorn Junction Improvement</b> For further information: <a href="https://highwaysengland.co.uk/our-work/east/a47-thickthorn-junction/#:~:text=The%20A47%2FA11%20Thickthorn%20junction%20is%20important%20for%20commuter%2C%20business,along%20with%20commercial%20business%20units.">https://highwaysengland.co.uk/our-work/east/a47-thickthorn-junction/#:~:text=The%20A47%2FA11%20Thickthorn%20junction%20is%20important%20for%20commuter%2C%20business,along%20with%20commercial%20business%20units.</a>	<ul style="list-style-type: none"> <li><b>S42 consultation on PEIR – Ran between 3/6/19 – 11/7/19.</b> The County Council responded under Urgent Decision</li> <li><b>S56 DCO submitted to PINS- 31 March 2021 and accepted in April 2021</b></li> </ul> <p>Further information is available on <a href="#">A47 – A11 Thickthorn Junction   National Infrastructure Planning (planninginspectorate.gov.uk)</a></p> <ul style="list-style-type: none"> <li><b>Start of works approx Jan - March 2023;</b></li> <li><b>Open to Traffic October 2024.</b></li> </ul>
1.6.	<b>(b) A47 North Tuddenham to Easton Dualling Scheme</b> For further information: <a href="https://highwaysengland.co.uk/our-work/east/a47-north-tuddenham-to-easton-improvement/#:~:text=T%20North%20Tuddenham%20to%20Easton,ve">https://highwaysengland.co.uk/our-work/east/a47-north-tuddenham-to-easton-improvement/#:~:text=T%20North%20Tuddenham%20to%20Easton,ve</a>	<ul style="list-style-type: none"> <li>S42 (PEIR) Consultation ran between 26/2/20 to 8/4/20 (NB was extended to 30/4/20 due to Covid-19). NCC continues to support the dualling of the A47 while raising a number of detailed issues relating to the local highway network etc. These comments have been endorsed through a Cabinet Member Decision (CMD) (April 2020) and a formal response has been sent to Highways England;</li> <li>S56 DCO submitted to PINS- <b>15 March 2021 (PINS has 28 days to decide whether to accept or not)</b>, all supporting documents on the PINS Web-site and NCC are currently assessing;</li> <li>the NCC NWL project team are continuing to work closely with the HE team on this project, and that we are now holding joint 'local liaison group' meetings with</li> </ul>

	<a href="#">hicles%20on%20this%20single%20carriageway.</a>  9km New dual carriageway	representatives from a large number of local parish councils.  <ul style="list-style-type: none"> <li>Submission of DCO in March 2021 and accepted in April 2021</li> </ul> Details and documents are available at <a href="#">A47 North Tuddenham to Easton   National Infrastructure Planning (planninginspectorate.gov.uk)</a>  Next dates for hearings November 2021 with the examination due to end 12 <sup>th</sup> February 2022  <ul style="list-style-type: none"> <li>Open to Traffic 2024 / 2025</li> </ul>
1.7.	<b>A47 Great Yarmouth junctions improvements (Vauxhall Junction )</b>  <a href="#">Highways England project page</a>	<ul style="list-style-type: none"> <li>Since the preferred route announcement of the Highways England (HE) scheme, the Great Yarmouth 'Third River Crossing' was awarded funding by the Department for Transport.</li> <li>Initial assessment commissioned by HE has indicated that the Third River Crossing may have a significant impact on traffic flows in Great Yarmouth, therefore HE to reassess traffic flows in the area so that agreement can be reached as to what is required to improve the road network in Great Yarmouth</li> </ul>
1.8.	<b>Third River Crossing – Great Yarmouth</b>  <a href="#">National Infrastructure Planning webpage</a>	NCC received confirmation (26/2/18) that the Secretary of State has accepted the section 35 application (Planning Act 2008) for the project to be considered nationally significant and therefore follow the DCO process for statutory approvals. Key dates for delivering are:  <ul style="list-style-type: none"> <li>DCO submitted to PINs with consultation (S56) ran between <b>17/6/19 to 4/8/19;</b></li> <li>Examination took place between 24 September 2019 to <b>24/3/2020;</b></li> <li>Recommendations sent to SoS 24 June 2020;</li> <li><b>DCO granted on 24 September 2020 by the Secretary of State;</b></li> <li>Start of works on site January 2021 with the aim to have the he bridge operational and open to traffic by early 2023.</li> </ul> <a href="#">Third River Crossing - Norfolk County Council</a>
1.9.	<b>Norwich Western Link (NWL)</b>  Project to create a new 3.8 mile dual carriageway road connecting the western end of Broadland Northway to the A47 trunk road.  <ul style="list-style-type: none"> <li>Not an NSIP</li> </ul>	<ul style="list-style-type: none"> <li>Following a review based on the Section 35 requirements the project is not planned to be delivered via a DCO (i.e. not being determined as a NSIP).</li> <li>Statutory process expected to commence during 2021 and continue through 2022; and construction start date now expected late 2023.</li> <li>There will be further Public Consultation - planned for autumn 2021</li> </ul>

		<ul style="list-style-type: none"><li>• Aim to have road complete / open late 2025</li></ul>
--	--	--