


Better Care Fund Monitoring Dashboard

Meeting target Within 5% of target > 5% over target

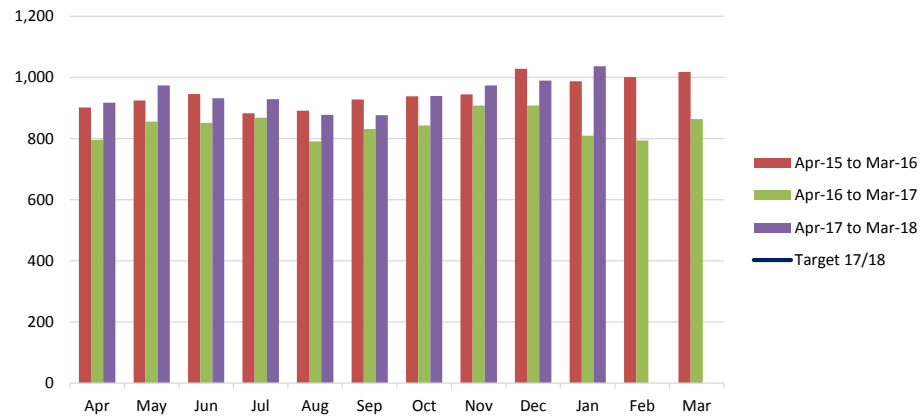
Norfolk County Council		Better Care Fund - KPI Dashboard (March 2018)												Clinical Commissioning Groups 					
Indicator	CCG	2017/18 Performance																	
		Apr	May	Jun	Jul	Aug	Sep	Oct	Nov	Dec	Jan	Feb	Mar	Q1	Q2	Q3	Q4	YTD	Target
Total non-elective admissions in to hospital (general & acute), all ages, per 100,000 population	Great Yarmouth	917	974	932	929	878	876	939	974	990	1,037			2,823	2,683	2,903		9,446	-
	Norwich	1,616	1,749	1,717	1,693	1,586	1,658	1,739	1,829	1,805	1,754			5,082	4,937	5,373		17,146	-
	North Norfolk	1,322	1,340	1,348	1,329	1,343	1,295	1,377	1,445	1,547	1,547			4,010	3,967	4,369		13,893	-
	South Norfolk	1,535	1,677	1,687	1,651	1,637	1,708	1,768	1,724	1,844	1,863			4,899	4,996	5,336		17,094	-
	West Norfolk	1,969	2,185	2,038	2,036	1,914	1,936	1,953	1,990	2,052	2,186			6,192	5,886	5,995		20,259	-
	Norfolk Total		7,359 (1,012.8)	7,925 (1,090.7)	7,722 (1,062.8)	7,638 (1,051.2)	7,358 (1,012.7)	7,473 (1,028.5)	7,776 (1,070.2)	7,962 (1,095.8)	8,238 (1,133.8)	8,387 (1,147.0)			23,006 (3,166.3)	22,469 (3,092.4)	23,976 (3,299.8)		77,838 (10,712.9)

Overview of performance

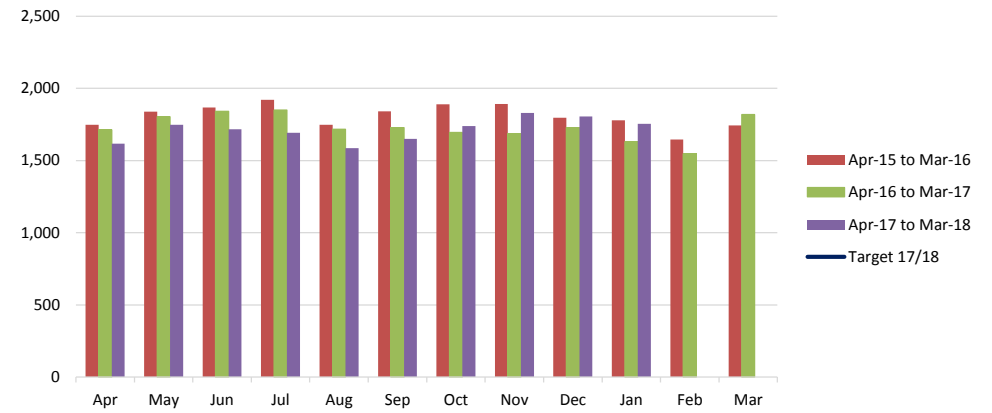
Metric	Key issues and discussion points	Definition	Source notes
Total non-elective admissions in to hospital (general & acute), all ages, per 100,000 population	Lower is better.	A Non-Elective Admission is one that has not been arranged in advance. It may be an emergency admission, a maternity admission or a transfer from a Hospital Bed in another Health Care Provider.	<p>NHS Digital Secondary Uses Service (SUS) data.</p> <p>Population taken from ONS 2014 based projections for 2017/18.</p> <p>Quarterly targets are apportioned equally between each of the three months.</p> <p>Roundwell Medical Practice moved from South Norfolk CCG to Norwich CCG on 1st Apr 2017, but has been assigned to Norwich for all three financial years to ensure figures are comparable.</p>

Non-elective admissions (general and acute) by CCG

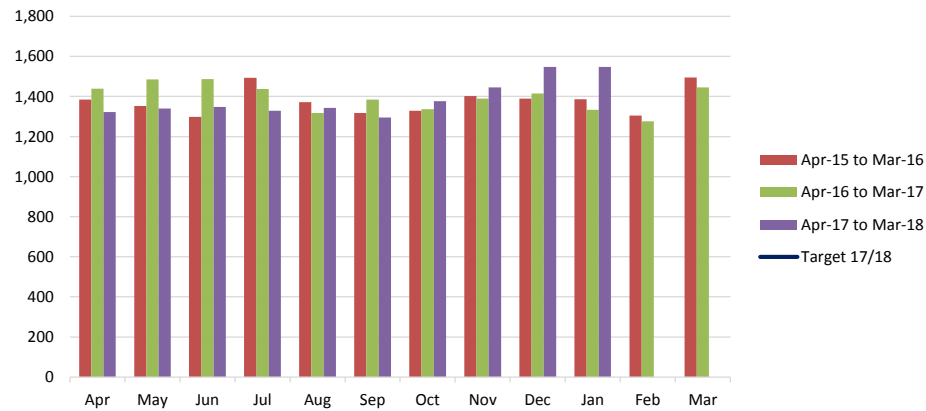
Great Yarmouth



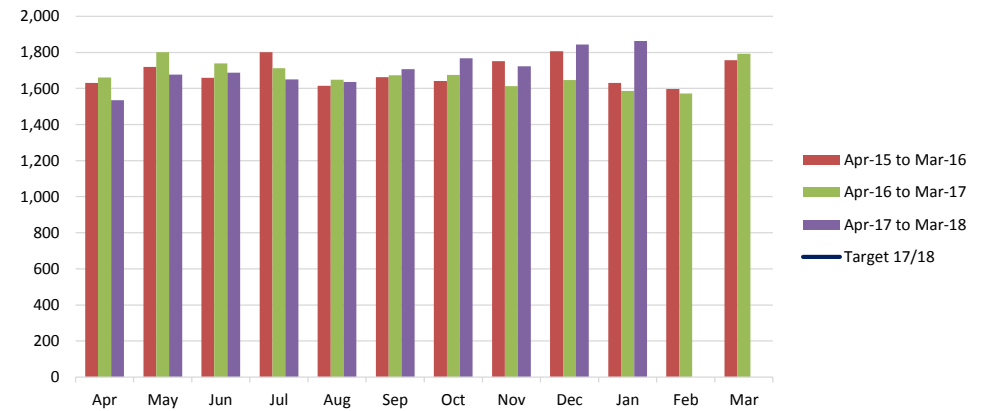
Norwich



North Norfolk

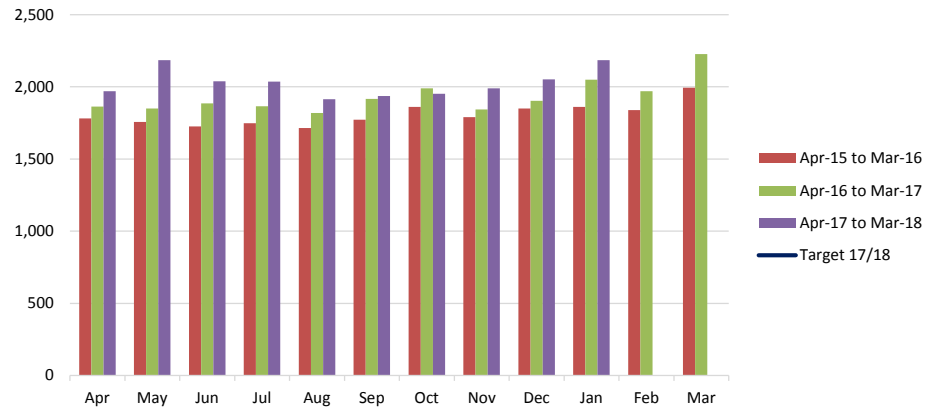


South Norfolk

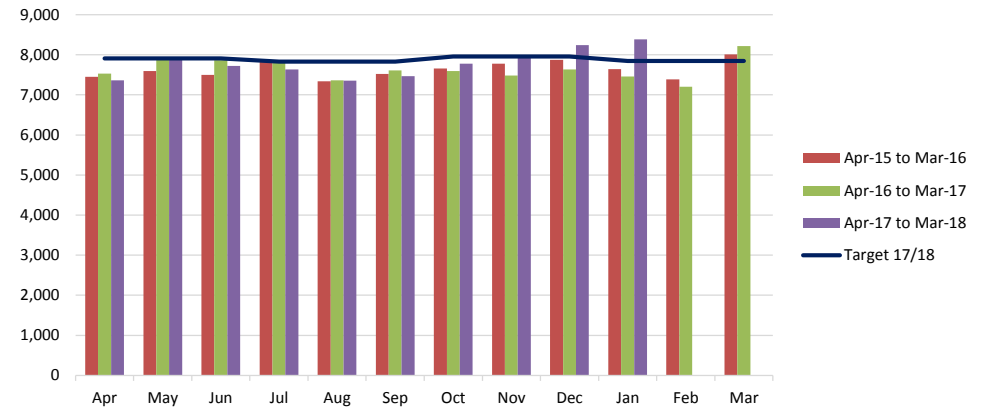


Non-elective admissions (general and acute) by CCG


West Norfolk



Norfolk Total



Meeting target Within 5% of target > 5% over target

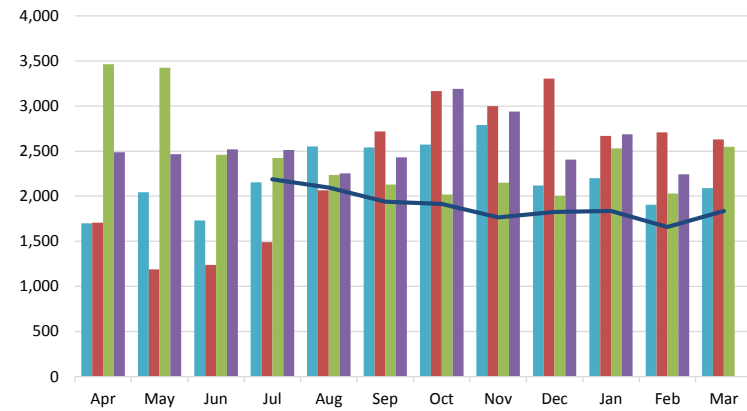
Norfolk County Council		Better Care Fund - KPI Dashboard (March 2018)											Clinical Commissioning Groups 							
Indicator	Trust	2017/18 Performance													Q1	Q2	Q3	Q4	YTD	Target
		Apr	May	Jun	Jul	Aug	Sep	Oct	Nov	Dec	Jan	Feb	Mar							
Delayed transfers of care (delayed days) from hospital per 100,000 population (aged 18+)	NNUH	1,110	933	847	844	820	955	1,637	1,215	936	1,268	887		2,890	2,619	3,788		8,562	-	
	QEH	150	163	171	297	361	336	231	211	226	311	319		484	994	668		2,292	-	
	JPH	86	119	181	113	84	37	115	324	181	108	121		386	234	620		1,083	-	
	Norfolk Acute Total	1,346	1,215	1,199	1,254	1,265	1,328	1,983	1,750	1,343	1,687	1,327		3,760	3,847	5,076		11,937	-	
	NSFT	528	460	458	340	318	373	499	442	320	277	197		1,446	1,031	1,261		2,766	-	
	NCHC	447	577	643	668	433	530	549	573	528	518	534		1,667	1,631	1,650		4,333	-	
	Norfolk Total	2,489	2,467	2,521	2,513	2,254	2,430	3,192	2,940	2,406	2,688	2,242		7,477	7,197	8,538		20,665	15225	
		(342.6)	(339.5)	(347.0)	(345.9)	(310.2)	(334.4)	(439.3)	(404.6)	(331.1)	(367.6)	(306.6)		(1,029.1)	(990.5)	(1,175.1)		(2,844.1)	(2,095.4)	
(Responsible organisation)	NHS	1,260	1,237	1,274	1,321	1,413	1,413	1,622	1,607	1,103	1,562	1,280		3,771	4,147	4,332		11,321	9869	
	Social Care	1,167	1,216	1,201	1,140	831	1,016	1,542	1,232	1,213	1,078	890		3,584	2,987	3,987		8,942	4993	
	Both	62	14	46	52	10	1	28	101	90	48	72		122	63	219		402	362	

Overview of performance

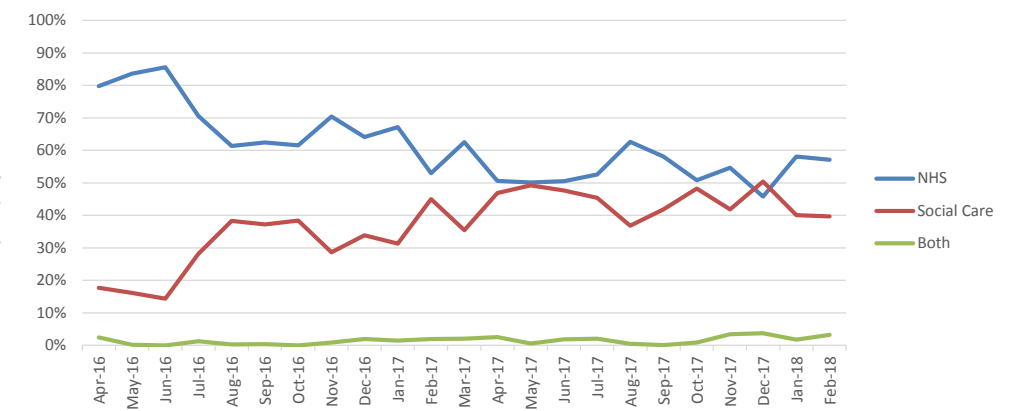
Metric	Key issues and discussion points	Definition	Source notes
Delayed transfers of care from hospital per 100,000 population	Lower is better.	<p>Numerator: Total number of delayed transfers of care for those aged 18+.</p> <p>Denominator: ONS 2014 based population projection for 2017.</p>	<p>NHS Monthly Situation Report data.</p> <p>Norfolk population taken from ONS 2014 based projections for 2017/18. Rates are not shown by Trust as populations are not available at hospital level.</p> <p>There was no target for Q1 2017/18.</p>

Delayed Transfers of Care

Norfolk Total




Responsible Organisation (Norfolk Total)



Supporting metrics

Meeting target Within 5% of target > 5% over target

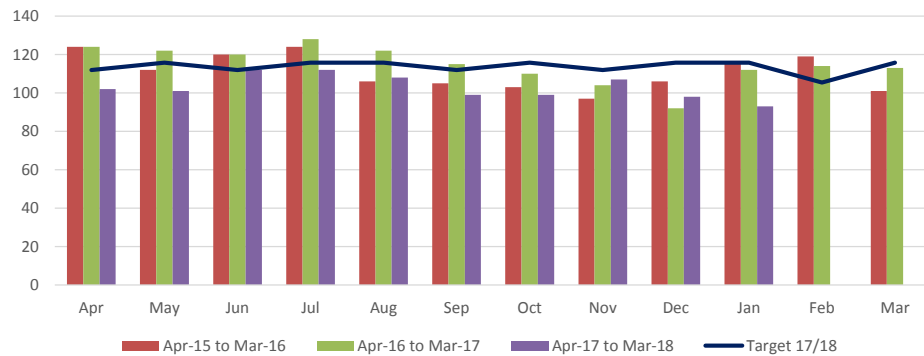
Norfolk County Council		Better Care Fund - KPI Dashboard (March 2018)												Clinical Commissioning Groups 					
Indicator	CCG	2017/18 Performance												Q1	Q2	Q3	Q4	YTD	Target
		Apr	May	Jun	Jul	Aug	Sep	Oct	Nov	Dec	Jan	Feb	Mar						
Local metric: 65+ Estimated diagnosis rate for people with dementia	GY & Waveney	61.7%	61.2%	61.1%	61.0%	62.1%	62.4%	62.5%	62.7%	62.7%	62.8%	64.7%	63.6%	61.3%	61.8%	62.6%	63.7%	63.6%	68.0%
	Norwich	62.3%	61.7%	61.3%	61.1%	60.7%	60.5%	60.6%	61.4%	61.1%	60.3%	60.7%	60.7%	61.8%	60.8%	61.0%	60.6%	60.7%	68.0%
	North Norfolk	61.4%	61.6%	61.3%	61.5%	61.3%	61.1%	60.8%	61.2%	61.0%	60.4%	62.1%	60.5%	61.4%	61.3%	61.0%	61.0%	60.5%	68.0%
	South Norfolk	62.5%	62.9%	63.2%	62.6%	63.6%	63.4%	63.6%	64.5%	64.5%	64.1%	58.3%	57.8%	62.9%	63.2%	64.2%	60.0%	57.8%	68.0%
	West Norfolk	64.8%	63.7%	63.6%	63.5%	62.9%	62.5%	62.6%	62.5%	61.5%	60.8%	62.9%	62.0%	64.0%	63.0%	62.2%	61.9%	62.0%	68.0%
	Norfolk Total		62.4%	62.2%	62.1%	61.9%	62.2%	62.1%	62.1%	62.5%	62.2%	61.8%	61.7%	60.9%	62.2%	62.0%	62.3%	61.5%	60.9%
Long-term support needs of older people (aged 65+) met by admission to residential and nursing care homes, per 100,000 population	GY & Waveney	11	11	16	18	12	14	14	11	12	15			38	44	37		134	-
	Norwich	26	21	19	20	19	16	20	17	18	14			66	55	55		190	-
	North Norfolk	18	20	23	24	23	22	21	23	28	12			61	69	72		214	-
	South Norfolk	15	22	32	18	32	22	21	34	28	30			69	72	83		254	-
	West Norfolk	30	27	22	32	22	25	22	21	11	18			79	79	54		230	-
	Norfolk Total		102 (47.2)	101 (46.7)	112 (51.8)	112 (51.8)	108 (49.9)	99 (45.8)	99 (45.8)	107 (49.5)	98 (45.3)	93 (42.3)			315 (145.7)	319 (147.5)	304 (140.6)		1,031 (476.8)
Proportion of older people (aged 65+) who were still at home 91 days after discharge from hospital into reablement/rehabilitation services	GY & Waveney	92.9%	95.1%	95.5%	94.5%	93.3%	90.9%							95.5%	90.9%			90.9%	90.0%
	Norwich	94.6%	92.2%	94.0%	94.2%	94.9%	93.5%							94.0%	93.5%			93.5%	90.0%
	North Norfolk	94.9%	95.9%	95.8%	95.5%	95.8%	94.0%							95.8%	94.0%			94.0%	90.0%
	South Norfolk	94.0%	95.7%	93.4%	91.0%	88.1%	93.2%							93.4%	93.2%			93.2%	90.0%
	West Norfolk	91.5%	91.9%	94.3%	95.8%	96.3%	96.3%							94.3%	96.3%			96.3%	90.0%
	Norfolk Total		93.7%	94.0%	94.6%	94.2%	93.7%	94.1%						96%*	94.6%	94.1%		96%*	96%*

Overview of performance

Metric	Key issues and discussion points	Definition	Source notes
Local metric: 65+ Estimated diagnosis rate for people with dementia	Higher is better.	The number of people detected in the population that have dementia as a % of prevalence. Same as the detection rate.	Quality Outcomes Framework (QOF) Recorded Dementia Diagnoses
Long-term support needs of older people (aged 65+) met by admission to residential and nursing care homes, per 100,000 population	Lower is better.	Numerator: Number of council-supported permanent admissions of older people to residential/nursing care. Denominator: Number of older residents (aged 65+) in area.	Social Care data taken from CareFirst. Based on Adult Care Localities which are coterminous with the corresponding CCGs. Population taken from ONS 2014 based projections for 2017/18.
Proportion of older people (aged 65+) who were still at home 91 days after discharge from hospital into reablement/rehabilitation services	Higher is better.	Numerator: Number of older people discharged from hospital at home, in extra housing or an adult placement scheme setting three months after the date of their discharge from hospital. Denominator: Number of older people (aged 65+) offered rehabilitation services following discharge from acute or community hospital.	* This is an unconfirmed figure because of the transition from CareFirst to LiquidLogic may mean there are differences in how the system counts. If there are changes needed to be made, we will issue a final confirmed figure in the next quarter.

Supporting metrics

Permanent admission of older people (Norfolk Total)



Effectiveness of reablement (Norfolk Total)

