



**Norfolk Police and Crime Panel**  
**Minutes of the Meeting Held on Tuesday 3 February 2015 at 10.00 a.m.**  
**Edwards Room, County Hall, Norwich**

**Main Panel Members Present:**

Mr Fred Agnew	Norfolk County Council
Mr Alec Byrne (Chairman)	Norfolk County Council
Mr Keith Driver	Norwich City Council
Mr Roger Foulger	Broadland District Council
Mr James Joyce	Norfolk County Council
Dr Christopher Kemp (Vice-Chairman)	South Norfolk Council
Mr Brian Long	King's Lynn and West Norfolk Council
Mr William Richmond	Breckland Council
Mr Richard Shepherd	North Norfolk District Council
Ms Sharon Brooks	Co-opted Independent Member

**Officers Present**

Mr Greg Insull	Assistant Head of Democratic Services
Mrs Jo Martin	Democratic Services and Scrutiny Support Manager

**Others Present**

Mr Simon Bailey	Chief Constable for Norfolk
Mr Stephen Bett	Police and Crime Commissioner for Norfolk
Mr Charlie Hall	Deputy Chief Constable for Norfolk
Mr John Hummersone	Chief Finance Officer, Office of the Police and Crime Commissioner for Norfolk (OPCCN)
Mrs Sharon Lister	Performance and Compliance Officer
Mr Mark Stokes	Chief Executive, OPCCN

**1. To receive apologies and details of any substitute members attending**

- 1.1 Apologies received from Mr I Graham (substituted by Mr R Foulger), Mr D Harrison (substituted by Mr J Joyce), Mr A Sommerville and Mr T Wainwright.

**2. Members to Declare any Interests**

- 2.1 No declarations of interest were made.
- 3. To receive any items of business which the Chairman decides should be considered as a matter of urgency**
- 3.1 None
- 4. Minutes of the meeting held on 16 December 2015**
- 4.1 The minutes of the meeting held on 16 December 2015 were confirmed by the Panel as a correct record and signed by the Chairman, subject to the following amendment:
- paragraph 6.3, 7<sup>th</sup> bullet point; 80p to read 8p a week.
- 5. Public questions**
- 5.1 There were no public questions received.
- 6. Police and Crime Commissioner for Norfolk's proposed precept for 2015-16**
- 6.1 The Panel received the Police and Crime Commissioner for Norfolk's proposed Revenue Budget and Capital Programme for 2015/16, Medium-Term Financial Strategy 2015/16 to 2019/20, and the funding and financial strategies.
- 6.2 The Police Commissioner gave an introduction to his proposed precept for 2015-15 which outlined the following:-
- The Home Office grant has been cut by 5% and predicted further cuts for the next four years.
  - The Commissioner's medium term financial strategy had included a council tax rise each year (of 2%) it had also included the use of the Budget Support Reserve year by year to enable savings to be planned and implemented in a measured way.
  - The strategy sought to protect the front line for as long as possible, but without an increased precept disruption to the front line would happen sooner.
  - The lion's share of the budget reductions would fall on the Constabulary, but the Commissioner had made cuts to his own office. As a result some £350k per annum had been passed to the Chief Constable to protect 10 PCSO posts in schools. In addition, the savings this year, £350k, would be used next year by the Chief Constable to recruit additional temporary staff in the Safeguarding and Investigations Command.
  - To freeze the council tax each year would increase the budget gap by £5.4m, from £9.3m to £14.7m at the end of March 2020.
  - The increase was £4.05 per annum at Band D but 75% of houses in Norfolk were below Band D.

- 6.3 The Panel received a presentation from the Chief Constable Simon Bailey, **Appendix A.**
- 6.4 The following points were made during the presentation:-
- Austerity was going to be with us until 2020 and plans must be put in place to manage this.
  - Norfolk had some of the lowest crime rates in the country, our anti-social behaviour numbers fall year on year and Her Majesty's Inspectorate of Constabulary (the HMIC) had recognised Norfolk as being one of the top five performers in this area.
  - Joint working with Suffolk Constabulary was very important in moving forward.
  - To meet the challenges that faced the Constabulary the focus needed to be on three key areas.
    - 1) Community Policing
    - 2) Tackling vulnerability and cyber threat.
    - 3) Building efficient partnerships.
  - Although many things could change between now and 2020 the funding received from central Government would not be increased.
  - The proposed budget had been through a rigorous process and had been examined thoroughly both internally and externally.
- 6.5 The Commissioner's Chief Finance Officer highlighted key elements of the report that had been prepared for the Panel, and his Chief Executive outlined the feedback from the public consultation on council tax, as attached to these minutes at **Appendix B**
- 6.6 The following points were discussed in regards to the consultation:-
- The consultation had been promoted and made available in a wide variety of formats and media coverage had been good.
  - Overall there were 1120 respondents and from these 64% supported the council tax increase and 35% supported a freeze.
  - The Panel pointed out that the turnout at both the Kings Lynn and Norwich consultation meetings was very low, with only 5 attending in Kings Lynn and 17 in Norwich.
- 6.7 The following points were discussed in response to the Panel's questions to the Commissioner:-
- New specialist training would be required for officers to deal with the high risk crimes involving vulnerable people and most of the training would be done via e-learning but there would be additional cost involved. It was not

possible to correlate cost with the number of incidents, but the Constabulary worked on the basis of societal costs of crime types as published by the Home Office.

- The Budget Support Reserve would be fully used by 2018/19 and the need to look at other reserves may be necessary.
- The reserves would need to be reviewed every year.
- Supporting Option 2 would not prevent job losses or the size of the Constabulary being reduced in the future; critical roles would not go but the general presence of police would need to be reduced. There would be a functioning police force in Norfolk but by 2020 it may look very different.
- As part of the Medium Term Financial Plan the Police Commissioner would expect to ask for support for a circa 2% increase every year between now and 2020.
- The Job Evaluation budget pressure mentioned in point 8.3 of the report referred to an ongoing project regarding equal pay claims, the amount shown was an estimate of future costs.
- The Commissioner stated that in terms of managing public expectations around the resources needed to deliver his Plan, he had made several media appearances where the situation had been made clear.
- The Commissioner outlined what he felt were the key areas to overcome the issues facing the police over the coming years.
  - 1) That public bodies needed to work more closely together to tackle crime and disorder.
  - 2) That the police forces across the country would need to federate or merge. Fewer, larger forces would enable further savings to be made. Although he had been criticised for this view, after the general election the Government would need to decide its short- to long-term policing policy.

A combination of these two factors would enable the police forces to continue and reduce the likelihood of further reductions to the front line.

- The Commissioner described how he saw his role as being able to break down barriers and broker deals between the different public bodies and the voluntary sector to ensure effective use of resources and that this would alleviate budget pressures enormously.
- It was recognised that with the dualling of the A11 there had already been substantial expansions in housing in areas such as Thetford, Attleborough and Wymondham. There needed to be a police force to match a rapidly growing county.

6.8 Mr K Driver proposed and was seconded by Mr B Long that the Panel support the Police and Crime Commissioner for Norfolk's proposed precept for 2015/16.

The motion was **carried** with 9 votes For and 1 Against.

6.9 The Panel **RESOLVED** to:-

1) Note the Police and Crime Commissioner for Norfolk's proposed Revenue Budget and Capital Programme for 2015/16, Medium-Term Financial Strategy 2015/16 to 2019/20, and the funding and financial strategies.

2) Support the Police and Crime Commissioner for Norfolk's proposed precept for 2015/16 and formally report this to the Commissioner.

**7. Complaints Monitoring Report**

7.1 The Panel received the regular monitoring information from the Commissioner's Chief Executive and Norfolk County Council's Head of Democratic Services.

7.2 The Panel were informed, that in regards to the IPCC complaint update, the outcome of the investigation had been published on the 23<sup>rd</sup> December and the Commissioner cleared of any criminal wrongdoing. The full report was still to be released.

7.3 It was discussed by the Panel that the delay from the IPCC was not acceptable and that once the report had been received, feedback should be made to the Home Office to express the concerns over the delay and that the Panel had found this unacceptable.

7.4 The Panel **noted** the report.

**8. Information bulletin – questions arising to the Commissioner**

8.1 The Panel received the report that summarised for the Panel both the decisions taken by the Commissioner and the range of his activity since the last Panel meeting.

8.2 The Commissioner informed the Panel that he had been chosen to support the Home Office to administer nearly £5m of national funding to support victims of sexual abuse.

The Commissioner will oversee two new funds established by the Home Office to support victims of child and adult sexual abuse across the England and Wales.

- The Child Abuse Inquiry Support Fund
- The Child and Adult Victims of Sexual Abuse Support Fund

8.3 The Commissioner assured the Panel that this additional role would not affect what was done in Norfolk; it would provide insights into these areas, and no Norfolk resources would be required.

8.4 The Commissioner would be selecting a panel of experts which would consider the bids and the Home Office would provide guidance.

8.5 The Panel requested that the Commissioner report back to them with updates on the progress of this project.

## **9. Work Programme**

**9.1** The Panel received the report outlining the proposed work programme for 2015-2016.

**9.2** The Panel considered and **agreed** the proposed work programme for 2015-16.

The meeting closed 11:30am.

### **CHAIRMAN**



**If you need this document in large print, audio, Braille, alternative format or in a different language please contact Democratic Services on 0344 800 8020 or 0344 800 8011 (textphone) and we will do our best to help.**

# DELIVERING THE POLICE AND CRIME PLAN AND MEETING THE CHALLENGE

Presentation to Norfolk Police and Crime Panel – 3 February 2015  
By Chief Constable Simon Bailey



- Norfolk Constabulary is an exceptionally high performing force
- We are recognised by HMIC as the best performing force in England and Wales
- We have the most advanced collaboration in England and Wales
- Norfolk is at the forefront of innovation and evidence based policing





# The Financial Headlines

To date we have:

- Saved £14 million
- Planned savings of £17 million
- To find £9-10 million



# INCOMING DEMAND

County: Norfolk  
Population: 870,100  
Officer numbers: 1,569

Across Norfolk, there is approximately **one police officer** for every **554** members of the public.

On a typical day in Norfolk Constabulary



**224**  
emergency 999  
calls received



Approximately  
**559**  
incidents are  
recorded



Approximately  
**51**  
arrests are made.  
Approximately **2** of  
these arrests will be  
for sexual offences



Approximately  
**93**  
crimes are reported



Deal with  
**70**  
ASB incidents



Officers will deal with, amongst other crimes: approximately **4** dwelling burglaries, **32** thefts, **4** thefts from a motor vehicle, **2** thefts of a motor vehicle, **39** violent crimes, **1** robbery, **3** sexual assaults, including rape

Officers will carry out **31** Stop and Searches. Of these **19** are drugs related. Of the 31 Stop and Searches, **2** will result in an arrest, **6** in advice, **1** in a verbal warning

Officers will respond to approximately **29** incidents flagged as being associated with people with mental health issues

Officers will issue: **6** cautions, **1** penalty notice for disorder, **2** cannabis warnings



Respond to approximately  
**7 missing persons**



Officers will attend approximately **5** collisions per day reported to police of which

**ONE**  
results in death or  
serious injury

**M**

Manage **1,221** sexual and violent offenders using **Multi-Agency Public Protection Arrangements** in partnership with local bodies

**S**

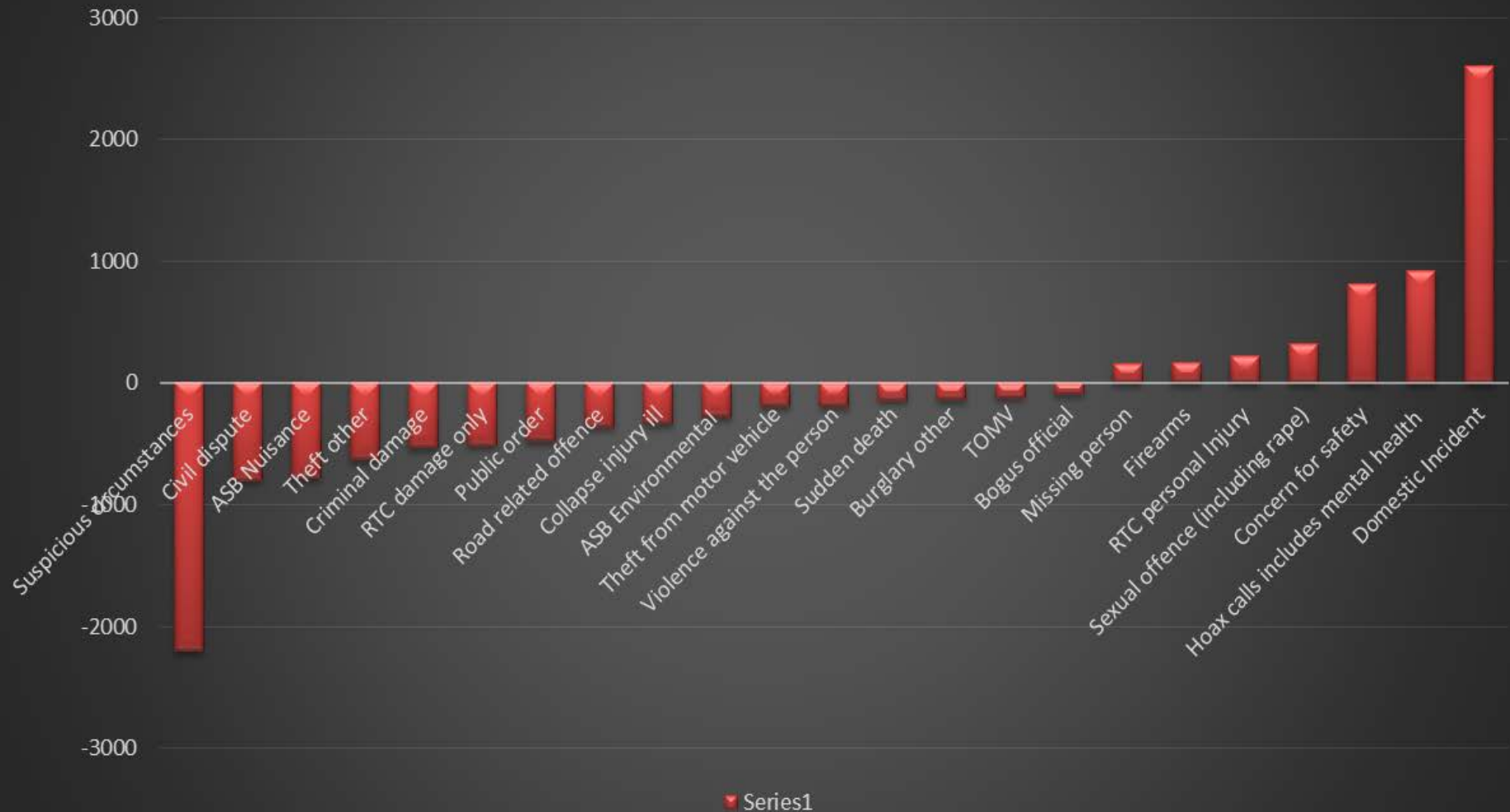
Supporting **1,519** families enrolled in the **Norfolk Family Focus and Early Help programme**

**S**

Supporting **1,087** domestic abuse victims being seen at **Multi-Agency Risk Assessment Conferences**



## Change in demand



# The Changing Pattern of Demand around Vulnerability

## Rape and Serious Sexual Offences

(Data for period 1<sup>st</sup> December – 30<sup>th</sup> November)

- Year 12/13 = 678 offences
- Year 13/14 = 944 offences
- **Increase of 266 offences which is a 39.2% growth**

## Child Sexual Exploitation

(Data for period 1<sup>st</sup> April – 30<sup>th</sup> September. Data only available from 01/04/13 – 30/09/14)

- 2013 = 40 recorded referrals relating to 46 children
- 2014 = 145 recorded referrals relating to 150 children
- **Increase of 105 referrals, which is a rise of 263%.**

## Adult Abuse

- (Data for period 1<sup>st</sup> December – 30<sup>th</sup> November)
- Year 2012/13 = 2062 referrals
- Year 2013/14 = 2221 referrals
- **Increase of 159 referrals, equal to 7.7%**

# The Changing Pattern of Demand around Vulnerability

---

## Child Abuse

- (Data for period 1<sup>st</sup> December – 30<sup>th</sup> November)
- Year 2012/13 = 2090 referrals
- Year 2013/14 = 2269 referrals
- **Increase of 179 referrals, equal to 8.6%**

## Public Protection

- (Data for day of 30<sup>th</sup> November 2014)
- 834 at liberty
- 205 in custody
- 13 abroad
- **1052 total RSOs. Additional 90 since 30/11/13 - 9.4% increase.**

# The Changing Pattern of Demand around Vulnerability

## Domestic Abuse Incidents & Crimes (1<sup>st</sup> December – 30<sup>th</sup> November)

- Year 12/13 = 13788 incidents & crimes
- Year 13/14 = 16395 incidents & crimes
- **Increase of 2607 incidents & crimes which is a 18.9% growth**

## Breakdown

## Domestic Abuse Crimes (1<sup>st</sup> December – 30<sup>th</sup> November)

- Year 12/13 = 3421 offences
- Year 13/14 = 4717 offences
- **Increase of 1296 offences which is a 37.9% growth**

## Domestic Abuse Incidents (1<sup>st</sup> December – 30<sup>th</sup> November)

- Year 12/13 = 10367 incidents
- Year 13/14 = 11678 incidents
- **Increase of 1311 incidents which is a 12.6% growth**

# To meet the challenge we need to...

- Retain our Community Policing
- Tackle Vulnerability and the Cyber Threat
- Build efficient partnerships





## OFFICE OF THE POLICE & CRIME COMMISSIONER FOR NORFOLK

### Council Tax Survey for 2015/16 – Breakdown of Responses

	Support for 2% increase	Support for Freeze	% FOR
<b>Paper/Email Responses</b>			
Paper forms	10	1	91%
Letters	0	2	0%
Email	1	1	50%
<b>Total</b>	<b>11</b>	<b>4</b>	<b>73%</b>
<b>On-line responses</b>			
Breckland	119	36	76%
KL & West	123	58	68%
Broadland	107	75	58%
North Norfolk	73	55	57%
South Norfolk	141	83	63%
Gt Yarmouth	59	26	69%
Norwich	60	57	50%
<b>Total</b>	<b>682</b>	<b>390</b>	<b>63%</b>
Do not pay			<b>10*</b>
<b>Public Meetings:</b>			
Kings Lynn/West Nfk public meeting	5	0	100%
Norwich public consultation	17	1	94%
<b>Total</b>	<b>22</b>	<b>1</b>	<b>96%</b>
<b>TOTALS</b>	<b>715</b>	<b>395</b>	<b>(*+10) = 1,120</b>

#### Result:

**64%** in favour of 2% rise and **35%** in favour of a freeze  
(with **1%** not paying Council Tax)



**Note:**

During the process of monitoring and analysing the responses, two responses were found to have been duplicated, so were counted only once, and 16 were found to be exactly the same repeat response. Only one of these responses has been included and the rest do not appear in the final figures.

**Consultation:**

The consultation was carried out in line with the report "Office of the Police & Crime Commissioner Budget Consultation 2015/16" which was before the Panel on December 16.

The consultation ran from January 2 to January 30 2015.

The results of the public consultation and comments received will be published on the OPCCN website.

**Do Not Pay Council Tax:**

10 responses were received from members of the public who do not pay Council Tax. No narrative response was given which showed a preference for either a freeze or an increase.

**Media:**

Coverage for the consultation was secured in and on all the main media outlets including Radio Norfolk, EDP, Evening News, Lynn News, Anglia TV, KLFM, Heart, Radio Norwich, and North Norfolk Radio. Many covered the consultation more than once.

The Office of the Police and Crime Commissioner promoted the consultation with tweets throughout the month.

ENDS>