

Norwich Area Committee

Date: Tuesday 14 September 2010

Time: 6:30pm*

Venue: West Hall, City Academy
Earlham Road
Norwich
NR4 7NU

Undercover bike racks are available at this venue.

*** For Members, there will be a tour of the City Academy led by the Principal, Mr David Brunton, beginning at 5:45pm.**

Persons attending the meeting are requested to turn off mobile phones.

Membership

Mr R Bearman (Chairman)
Dr A Boswell
Mr B Bremner
Miss C Casimir
Mr R Edwards
Mr P Hardy
Mr M Hemsley

Mr S Little
Mr G Nobbs
Mr M Scutter (Vice-Chairman)
Ms J Toms
Mr P Wells
Dr F Williamson

**For further details and general enquiries about this Agenda
please contact the Committee Officer:**

Kristen Jones on 01603 223053
or email kristen.jones@norfolk.gov.uk

A g e n d a

1. **To receive apologies for absence**

2. **Minutes**

(Page 1)

To agree the minutes of the meeting held on 13 July 2010.

3. **Declarations of Interest**

Please indicate whether the interest is a personal one only or one which is also prejudicial. A declaration of a personal interest should indicate the nature of the interest and the agenda item to which it relates. In the case of a personal interest, the Member may speak and vote on the matter. If a prejudicial interest is declared, the Member should withdraw from the room whilst the matter is discussed.

These declarations apply to all those Members present, whether the Member is part of the meeting, attending to speak as a local Member on an item or simply observing the meeting from the public seating area.

4. **To receive any items proposed as matters of urgent business**

5. **Maximising Landfill Diversion – Norwich City Council**

(Page 5)

Report by the Head of Citywide Services, Norwich City Council

Mark Henderson, Waste Partnership and Strategy Officer, will

also be attending to answer Member questions.

6. **Future Meetings and Topic Programme**

Members are asked to contribute suggestions for topics and venues for the future meetings below. Members are also asked to agree the 2011 dates below.

Date	Venue	Topic
Thursday 18 November 2010	Jubilee Centre, Long John Hill, Norwich< NR1 2EX	<ul style="list-style-type: none"> • Winter Maintenance in Norwich (TBC)
Tuesday 25 January 2011		<ul style="list-style-type: none"> • Update on the performance of Open & City Academies in Norwich
Thursday 24 March 2011	County Hall	<ul style="list-style-type: none"> • Fire & Rescue Service: Emergency Cover in Norwich (TBC) • Site visit to new Fire Station (TBC)
Tuesday 17 May 2011		<ul style="list-style-type: none"> •

Thursday 21 July 2011		•
Tuesday 13 September 2011		•
Thursday 17 November 2011		•

Chris Walton
Head of Democratic Services

County Hall
Martineau Lane
Norwich
NR1 2DH

Date Agenda Published: 6 September 2010



If you need this document in large print, audio, Braille, alternative format or in a different language please contact Kristen Jones on 0344 800 8020 or 0344 800 8011 (textphone) and we do our best to help.

Norwich Area Committee

Minutes of the Meeting Held on Tuesday 13 July 2010
at County Hall, Norwich

Members of the Committee Present:

Mr R Bearman (Chairman)

Dr A Boswell
Miss C Casimir
Mr R Edwards
Mr M Hemsley
Mr G Nobbs

Mr M Scutter
Ms J Toms
Mr P Wells
Dr F Williamson

Norwich City Councillors Present:

Judith Lubbock City Councillor for Eaton Ward

Officers Present:

Kristen Jones Committee Officer, Democratic Services
Andy Watt Head of Transportation (Norwich City Council)
Jeremy Wiggin Transport Development Officer

Others Present:

Janet Bearman Resident

1. **Apologies and substitutions**

1.1 Apologies were received from Mr Bremner, Mr Hardy, and Mr Little.

2. **Minutes**

2.1 The minutes of the meeting held on 11 May 2010 were agreed as a correct record and signed by the Chairman, subject to the deletion of the second sentence of the eleventh bullet point of 8.3.

3. **Declarations of Interests**

3.1 There were no declarations of interest

4. **Items of Urgent Business**

4.1 There were no items of urgent business.

5. Norwich 20 mile-per-hour Speed Limit

5.1 The Head of Transportation at Norwich City Council presented his report, which updated Members on speed management in Norwich. The report which went to the May meeting of the Norwich Highways Agency Committee was attached as an appendix. At that meeting the Committee agreed that a unilateral roll out of the signed only 20mph was not the most appropriate course of action at the current time, and asked officers instead to review the policy for speed management across the whole road network.

5.2 During the discussion the following points were made:

- The Head of Transportation distinguished between a speed zone and a speed limit by saying that speed zones were areas with road humps or other physical obstacles to limit the speed to 20mph while speed limits were used where there were no physical measures.
- In response to a question on how much a new study on the speed limits within the city might cost, the Head of Transportation replied that he felt these costs would be fairly modest and be in the range of thousands—rather than tens of thousands—of pounds. He thought this because a completely new comprehensive study was not necessary.
- The Head of Transportation and Landscape noted that about one third of the city already was covered by the pilot scheme and other traffic calming areas and had either 20mph speed limits or 20mph speed zones.
- Members pointed out that there were less tangible benefits to the 20mph speed limits, including encouraging more people to travel by cycling rather than getting in their vehicles because it was safer to cycle in a lower speed limit. The Head of Transportation said that unfortunate there was no data on cycling.

5.3 Members thanked the officers for their update.

6. NATS Implementation Plan

6.1 The Transport Development Officer delivered the report on behalf of the Director of Environment, Transport and Development. The report outlined the NATS Implementation Plan and what it has achieved in the past and what it plans to carry forward in the future.

6.2 During the discussion the following points were made:

- The Transport Development Officer explained how an increasing number of bus shelters and bus stops were equipped with thin film transistor (TFT) screens which allowed improved image and text

quality to be displayed. These information screens provided, in most cases, real time and scheduled bus departure information as well as other council information, such as Park & Ride and recycling information. Currently some bus shelters, particularly in the city centre, had these screens which displayed the bus timetable but not in real time. Plans were in place to introduce real time information at these stops. Presenting more travel information at stops with these screens was a relatively low-cost project which offered a good value for money service.

- Members commented on the possibility of making bus shelters carbon neutral and having solar panels to power the information screens and lighting. The Transport Development Officer noted that the solar powered TFT screens along Dereham Road were the first displays of their type in the UK. As part of work being undertaken with train operators National Express East Anglia and Network Rail, options were being considered for making stations carbon neutral.
- There were options for the Park & Ride sites with regard to carbon reduction. Feasibility work was being undertaken to look at the possibility of installing wind turbines and other energy reducing measures.
- Members commented on the St. Augustine's Gyrotory works saying that residents did not feel well-informed about these works and the suggestion was made that more could be done with the press, such as an editorial, to let the public know the timescales for the works. The Transport Development Officer noted that there was a monthly newsletter produced for this scheme, which was mailed out to stakeholders and could also be accessed from the Norfolk County Council website at www.norfolk.gov.uk/staugustinesgyrotory. Works were scheduled for completion by mid-November.
- Members highlighted that students from the University of East Anglia (UEA) were some of the most frequent bus customers. The Transport Development Officer agreed and said that the County Council spoke with representatives from the UEA and Norwich Research Park on a regular basis about transport needs.
- The Head of Transportation and Landscape at Norwich City Council added that the Scrutiny Committee at Norwich City Council were currently looking at cycling issues in the city.

6.3 The Committee thanked the Transport Development Officer for his report.

7. Future Meetings and Topic Programme

7.1 It was suggested that Norwich City Hall and Norwich Bus Station could be made available for the Committee to use as a venue for some future meetings.

- 7.2 It was agreed that at their next meeting, Members wished to look at how Building Schools for the Future and the lack of funding would affect Norwich schools.
- 7.3 At their November 2010 meeting, Members wished to have a report on the Winter Maintenance Plan and Food Waste Collection Schemes.
- 7.4 Members wished to add the topic of NHS Community Nurses to their Forward Work Programme.
- 7.5 The next meeting of the Norwich Area Committee would take place in the **West Hall at the City Academy, Earlham Road, Norwich** at 6:30pm on Tuesday 14 September 2010.

The meeting concluded at 8:05pm.

CHAIRMAN



If you need this document in large print, audio, Braille, alternative format or in a different language please contact Kristen Jones on 0344 800 8020 or 0344 800 8011 (textphone) and we will do our best to help.

**Maximising Landfill
Diversion – Norwich City Council**

Summary
To update Members on the introduction of food waste collections in Norwich

1. Introduction

Norwich City Council adopted a five year Integrated Waste Management Strategy in 2007 as a practical response to Norwich's poor recycling performance and to provide the framework by which new and challenging recycling targets could be achieved. The key objectives included a commitment - "To be amongst the best recycling authorities in the country by 2012.

At the heart of this strategy was a change to an Alternate Weekly Collection (AWC) service for waste and recycling. This was introduced over an 18 month period beginning in 2008. The AWC service has been the primary reason why Norwich has improved its recycling rate from 16% to over 35% since 2007. In addition to this, Norwich City Council was named in 2009 as one of the ten local authorities in England who had made the biggest reductions in the amount of waste sent to landfill.

2. Contract re-lets

On the 1st April 2010 the council changed its contractor for delivering its waste management services to Connaught PLC and their sub-contractor Verdant Group Ltd following a competitive tender exercise. As part of the re-let process, tenderers were asked to submit fully costed proposals to maximise the amount of waste that could be diverted from landfill without increasing the overall tonnage of waste collected.

The tenderers were invited to submit innovative options to improve the quality of service whilst maximising recycling and landfill diversion. The contracts were evaluated on quality and cost, initially looking at the base service, i.e. what we do now. Annual savings of over £600,000 were achieved which allowed the council to reinvest into the waste management service and to take up the option of maximising diversion of waste from landfill.

3. Maximising Landfill Diversion

The new waste management service will see a combined collection service for dry recyclables, glass, garden waste, food waste, mini-recycling banks, bulky items and residual waste. A minimum level of achieving 50% recycling of collected waste has been set and it all has to be done without increasing the

amount of waste collected.

The new service will involve the use of split-bodied vehicles that will allow for the collection of a number of waste streams at the same time and in the same vehicle. This will simplify and standardize collection routines for residents and will make the contractor's collection schedules much more efficient. As an example: a household with a Monday collection will have their general waste and food waste collected on one Monday and their blue bin, glass and food waste collected the following Monday.

The service will operate by dividing the city into five zones (one for each day of the week). This will concentrate resources into one zone, reducing the carbon footprint of the service and ensuring that sufficient resources are available to make all collections and resolve issues in each zone on each day. The vehicles will be fitted with tracking devices which will allow for a much more detailed analysis of the collection rounds and will help to drive-out inefficiencies. It will also allow the Council's front-line staff to provide much more timely and accurate responses to the public about collection issues.

4. Food Waste

The introduction of the new service will see the introduction of food waste collections. An information pack detailing the new service is attached at [Appendix A](#).

Initially it will be offered to those on the alternate weekly collection service which is approximately 55,000 households. Those who live in flats and other communal areas will not have access to the service; however, the council is looking at ways where collections can be made from communal areas. There are trials currently being held on other areas such as South Oxford which we hope to learn from and introduce to Norwich in the medium term.

Residents will be provided with a 23 litre food waste bin, a kitchen caddy and an introductory roll of 10 liners for the caddy as well as full instructions on how to use the service. The food waste will be collected weekly.

Once collected the food waste is transferred to bulk containers and taken to Countrystyle Group at Parnham near Ipswich. In the near future it is hoped to deliver it to more local outlets once these have been established. The contracts are flexible enough to accommodate changes in the final destination point. Countrystyle Group will process the food waste through an in-vessel composter and turn it into a soil improver to be spread on farmland.

5. Outputs and Targets

The collected waste stream for Norwich is approximately 43,000 tonnes of which around 12,000 tonnes is currently sent for recycling and 3,000 tonnes for composting.

Although a minimum target of 50% recycling was set within the contracts, experience of other authorities who have already introduced similar schemes,

show that recycling rates will surpass this. South Oxford is currently recycling approx 70% and Surrey Heath has exceeded 65%. Since Norwich has a different demographic and social make up having many more flats a target of 55% recycling has been set for the first full year of operation of the scheme.

The collection of food waste is expected to divert over 5,000 tonnes a year from landfill to recycling. It is also anticipated that material collected through other collections such as glass and dry recyclables will also increase as residents become more aware of what they are throwing out.

6. Conclusion

Introduction of the maximum landfill diversion service will: -

- (i) Introduction of a new food waste service
- (ii) Increase recycling rates
- (iii) Divert more waste from landfill
- (iv) Increase awareness of responsible waste management practices
- (v) Improve customer satisfaction

There are other benefits including: -

- (i) Reducing the carbon footprint of the service
- (ii) Improving collection efficiencies
- (iii) Reduced costs to the council
- (iv) Reduced congestion due to fewer vehicles required

Residents in Norwich have contributed to several leaps forward over the last three years in reducing the amount that is sent to landfill and increasing our recycling rate. This includes the AWC scheme and the introduction of the blue recycling bins, the garden waste service which now has over 8,000 subscribers and the kerbside glass collection service – the only one of its kind in Norfolk. Introducing food waste collections will provide a further boost to the City's performance and will help to put Norwich among the best performing authorities across the country.

8. Officer Contact

If you have any questions about matters contained in this paper please get in touch with:

Adrian Akester, Norwich city Council
Head of Citywide Services

01603 212331
adrianakester@norwich.gov.uk



If you need this document in large print, audio, Braille, alternative format or in a different language please contact the Kristen Jones on 0344 800 8020 or 0344 800 8011 (textphone) and we will do our best to help.

NEW!

Food waste collection

Councillor and staff information



NORWICH
City Council



recycle
for Norwich

Introduction

Over the last few years Norwich has climbed up 140 places in the defra rankings from 2007-08 to 2008-09, almost doubled its recycling rate since 2006-07, and received national recognition for improvements to the service.

Introductions of an extended recycling scheme and the brown bin garden waste service have been really successful. Thanks to the positive response from local people using these schemes, we are confident about achieving even greater success in the future.

Norwich is in the top ten of authorities across the whole country for reducing household waste the most. This is such an achievement. Sending less waste to landfill is what it's all about, and people living in the city are doing a great job

of minimising their waste, choosing to reuse, and taking advantage of the ability to be able to recycle more.

In a few weeks we will be introducing another exciting scheme to the city, helping people to think about how much waste they are producing in the first place, and meaning they can recycle more from home.

Collecting food waste for recycling from the majority of homes in the city, means that Norwich will continue to become more eco-friendly through cutting the amount we send to landfill dramatically and reducing our carbon emissions.



What is collected when

One week this will be collected...



Recycling

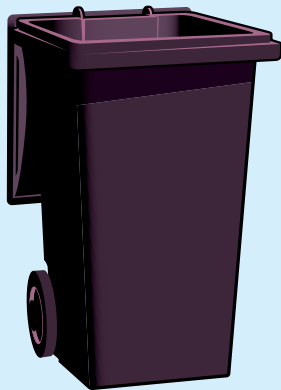


Food waste



Glass

...and the **next week** this will be collected



Other waste



Food waste

If you use our brown bin garden waste collection service this will continue as normal. Please check your garden waste calendar for more information.

The facts

Why do we need to recycle more?

- Shortage of suitable landfill sites.
- Landfill sites emit greenhouse gases such as CO₂ and methane.
- Help sustain natural resources for future generations.
- European Union (EU) and central government targets.
- Waste disposal costs are increasing.
- Reduces pollution caused by extracting virgin raw materials and burying waste in the ground.
- Saves energy as much less is used to produce goods from recyclable materials rather than purely from raw materials.

Legislation

- The EU has set ambitious waste reduction and recycling targets.
- The Landfill Directive (1999/31/EC), adopted by the EU in 1999 is drastically changing the way the UK handles waste.
- With the coalition government's vision of being "the greenest government ever" we can expect more strict regulations.

The Landfill Directive

Landfill allowances are allocated by government to that nationally, the UK reaches the targets set for reducing the amount of biodegradable municipal waste going to landfill, by:

- 75 per cent of 1995 levels by 2010
- 50 per cent of 1995 levels by 2013
- 35 per cent of 1995 levels by 2020

Landfill Allowance Trading Scheme (LATS)

LATS enables waste disposal authorities (WDAs – currently Norfolk County Council) to flexibly trade, bank or borrow landfill allowances.

These allowances are tradable, so that authorities with a high level of waste going to landfill can buy more allowance from authorities with lower landfill rates.

Currently local authorities are fined £150 per tonne of waste sent to landfill that is over their allowance limit.

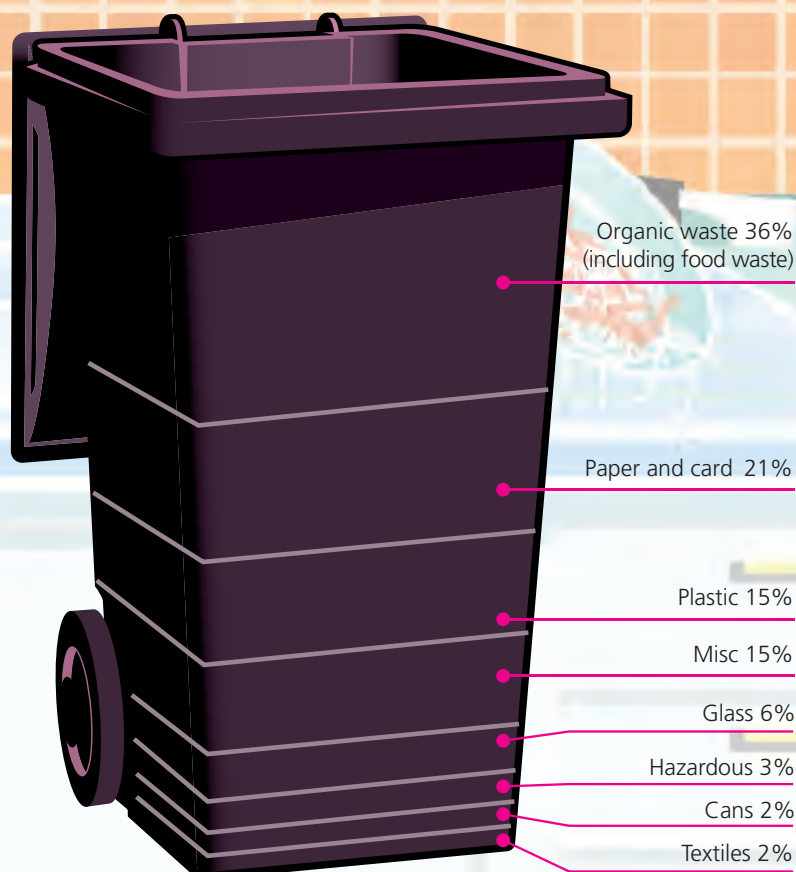
Waste urgently needs to be diverted from landfill to avoid these potentially significant fines, particularly in a time when councils must make major savings.

Reduce, reuse, recycle

Small and easy steps can be adopted by everyone to 'slim their bin'.

- Simple things like buying loose vegetables instead of pre-packed, and products with less packaging will save space in household bins, as well as helping the environment.
- Recycling is getting easier for everyone to do. Experts estimate up to 80 per cent of the average household waste can be recycled – so really encourage people to take a couple of minutes to think about which bin their rubbish needs to go in.

- Reducing the amount of waste we send to landfill means we all need to think more about what, and how, we throw away.
- Help to put pressure on manufacturers to decrease packaging, by calling Consumer Direct on 08454 040506 or visit www.tradingstandards.gov.uk to report excessive packaging.
- Reusing everyday items like drinks bottles and carrier bags will mean you are producing less waste. Try using refillables like cleaning products to save you money, as well as space in your bin.



The facts

What does the new food waste collection mean for people?

Everyone who has their own wheelie bin and is receiving an alternate weekly collection will automatically receive the new food waste collection service.

This is an *additional* service to those that people already receive.

Food waste collections will be weekly and on the same day as people's recycling or waste wheelie bins are collected making the service simple for everyone who uses it.

Caddy packs for households receiving the service will be delivered during September 2010.

This service will dramatically reduce the amount of waste sent to landfill in the city, and will really help us to reiterate messages about waste reduction in the first instance.

Norwich City Council's recycling rates and targets

2004-05	14.2%
2005-06	15.8%
2006-07	18.2%
2007-08	23.6%
2008-09	34%
2009-10	36%

Successes and further improvements?

- Additional food waste service being introduced to at least 53,000 homes in autumn 2010.
- Blue bin recycling scheme successfully introduced to the majority of the city.
- Brown bin garden waste recycling scheme has over 8,000 people signed up to it.
- 100 per cent of properties now have access to recycling services.
- Mini recycling banks located in and around the city centre collect well over 100 tonnes of recyclable material each year.

What people will get in their caddy pack

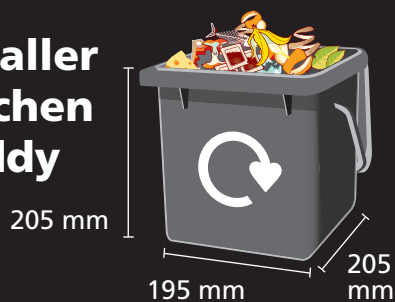
- 23 litre food waste caddy



- Information pack and collection calendar



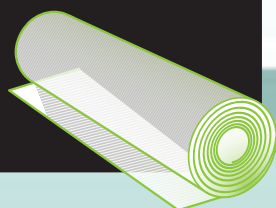
- Smaller kitchen caddy



- Letter about the service and any day change information



- Introductory supply of liners

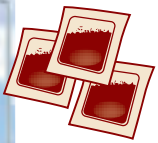
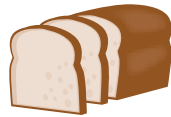
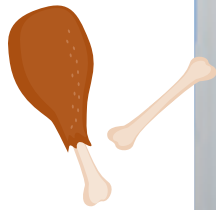


What goes in which bin?

Your black and grey kitchen caddy

All food waste – but no packaging – including:

- leftovers from meals
- meat – raw and cooked, including fat, bones
- fish – raw and cooked, including bones and shells
- eggs, including the shells
- all dairy products eg cheese
- vegetables and fruit – raw and cooked
- bread, cakes and other baked goods
- rice, pasta and beans
- tea bags and coffee grounds
- cooking oil, lard and other fats
- tinned and dry pet food – but not straw or animal bedding



Your blue bin

- Paper
- Cardboard
- Steel and aluminium cans
- Metal aerosol cans
- Plastic bottles



Composting

Using a composter, you can recycle garden waste and some kitchen waste including:

- vegetable peelings, fruit waste, plant prunings, grass cuttings, fallen leaves
- cardboard egg boxes, tea bags
- crunched up/shredded paper



Your green box

Glass jars and bottles of any colour



Brown bins

Now available to everyone in the city, the garden waste scheme is a paid for subscription service, for 25 collections per year.

They accept most garden waste including:

- twigs and small branches
- leaves and shrubs
- hedge clipping
- cut flowers
- grass cuttings



Other waste

Tetra Paks

- These can be taken to the household waste recycling centre on Swanton Road or to any of Norfolk's recycling centres around the county. The nearest outside the city is at Ketteringham, south of Norwich on the A11. For more information please call Norfolk County Council on 0844 800 8004 or visit www.norfolk.gov.uk/recycling
- Some bring bank sites also accept Tetra Paks. Currently:
 - Waitrose, Eaton
 - Sainsburys, Queens Road

DIY waste

- If you have a lot of DIY waste then the easiest thing to do is to hire a skip – there are plenty of companies in the phone directory or on the internet.
- You can take one 80 litre bag of waste a week to the Swanton Road household waste recycling centre free of charge. Check with Norfolk County Council for charges for larger amounts.

Hazardous waste

- It is illegal and dangerous to put hazardous items in your waste.
- Contact us for advice on 0344 980 3333 or email info@norwich.gov.uk

Clinical waste

- If treatment has been prescribed, you or your surgery/hospital will need to make arrangements for disposal.
- Please get in touch with our customer contact team to make arrangements for collection in other circumstances.

Questions and answers

Why does Norwich City Council need to bring in this new service?

- In order to reduce the amount of waste we collect and send to landfill, and to enable us to meet tough government targets, we need to help residents think more about what they are throwing away and how they are doing it.
- We believe that by encouraging residents to think before they discard their waste, people will:
 - recycle more
 - see that we are serious about tackling a big national and global problem that is not going away
 - be more responsible when buying items in the shops – waste minimisation is the key, and will put pressure on manufacturers to decrease the amount of packaging they produce.
- To deliver a value for money service and keep disposal costs to a minimum.
 - The cost of disposal is currently met by Norfolk County Council and forms part of your overall council tax.

How does the scheme work?

We will be collecting food waste every week in the larger caddy that will be given to you in September.

More information will be sent to you with your caddy.

Is everyone in the city getting bins?

At the moment we are introducing this service to households that already have their own wheelie bin. We will be looking into options for other areas in the future.

Can I opt out of the food waste collection service?

We will be delivering a food waste bin to your home, but you don't have to put it out for collection.

Is my collection day changing?

We will need to make some changes to improve the services but will keep residents fully informed.



You'll get a new calendar when your caddy pack is delivered telling you what day everything goes out on, so make sure you double check this when it comes – you don't need to make any changes yet.

How should I use the caddies?

Whatever works best for you... you can use your smaller caddy to collect food scraps each day and then transfer them into the larger one, you could replace a pedal bin in your kitchen with the larger caddy, or pop it under the sink – whichever suits you best.

Can I have extra or bigger caddies?

Please try your food waste caddies for a few weeks to see if they suits your needs.

Unfortunately we are not able to provide more than one caddy pack per household, but there are lots of other things you can do to cut down on the food waste you produce.

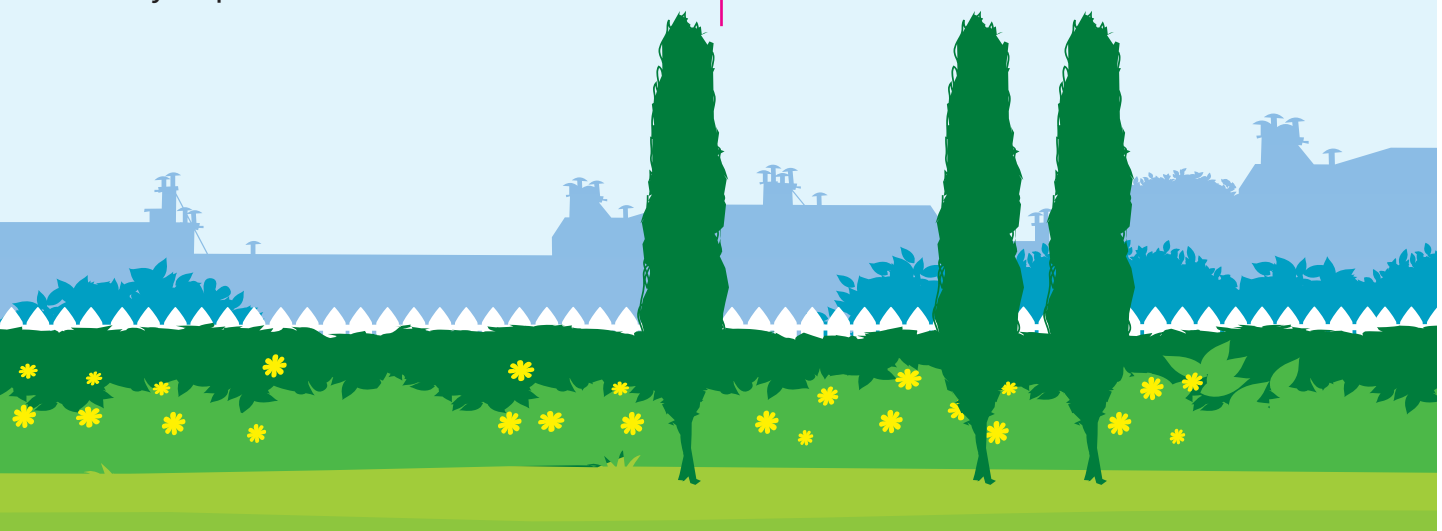
You can visit www.lovefoodhatewaste.com for helpful tips on wasting less, and recipe ideas for any leftovers.

You could also try composting or use a Green Cone – visit www.recyclenow.com for more information, or call Norfolk County Council on **0844 800 8004**.

Where do I need to put my caddy out for collection?

Please make sure your caddy is out to the front of your property, but not blocking the pavement. Our collection crews are happy to collect from just inside the boundary to your property – please make sure that your caddy can easily be seen from the pavement.

Caddies must be put out by 7am on the day of collection – if you do leave it out the night before, please don't put it out before 6pm.



Questions and answers

How do I report a missed collection?

You can call the council's customer contact team on 0344 980 3333 or email info@norwich.gov.uk

How will I know which is my caddy?

We suggest you number your bin for ease of identification.

Can I put my house number or address on my food waste caddy?

Yes.

How do I prevent flies and maggots in my food waste caddy?

Again, make sure you keep the lid tightly closed and locked so that flies cannot get into the caddy and lay their eggs.

Make sure you wrap food waste in newspaper or use compostable bags.

If you do get maggots in the bin, you can help to control them by using a light dusting of an insect powder, like ant powder, that contains permethrin.

How do I stop foxes and cats getting into the food waste bin when it is outside?

The larger caddies are easily lockable to stop any unwanted pests getting in them – there will be more information on this when they are delivered to you.

What happens to my food waste?

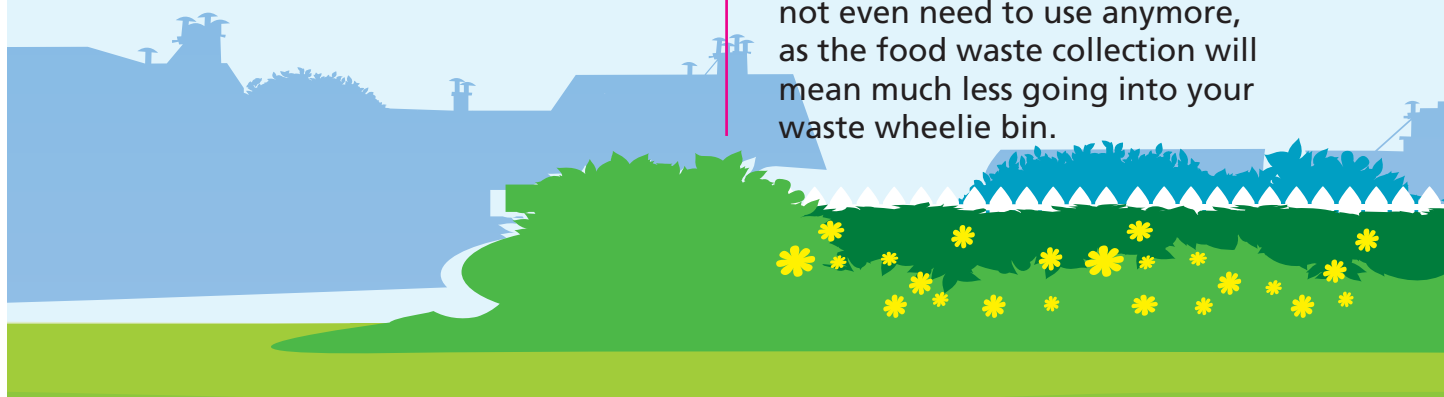
Your food waste is taken to a special processing plant, where the end product will be used to improve agricultural soil in the UK.

Can I use plastic bags to line my caddy?

No, sorry – to keep them clean you can wrap your food waste in newspaper, or use compostable corn starch liners available from supermarkets.

We are providing everyone with an introductory supply of corn starch liners so you can see the sort you should keep an eye out for. More information about liners will be included with your caddy.

They are about the same price as a roll of bin bags, which you might not even need to use anymore, as the food waste collection will mean much less going into your waste wheelie bin.



What can I put in my new food waste caddy?

NO THANKS!

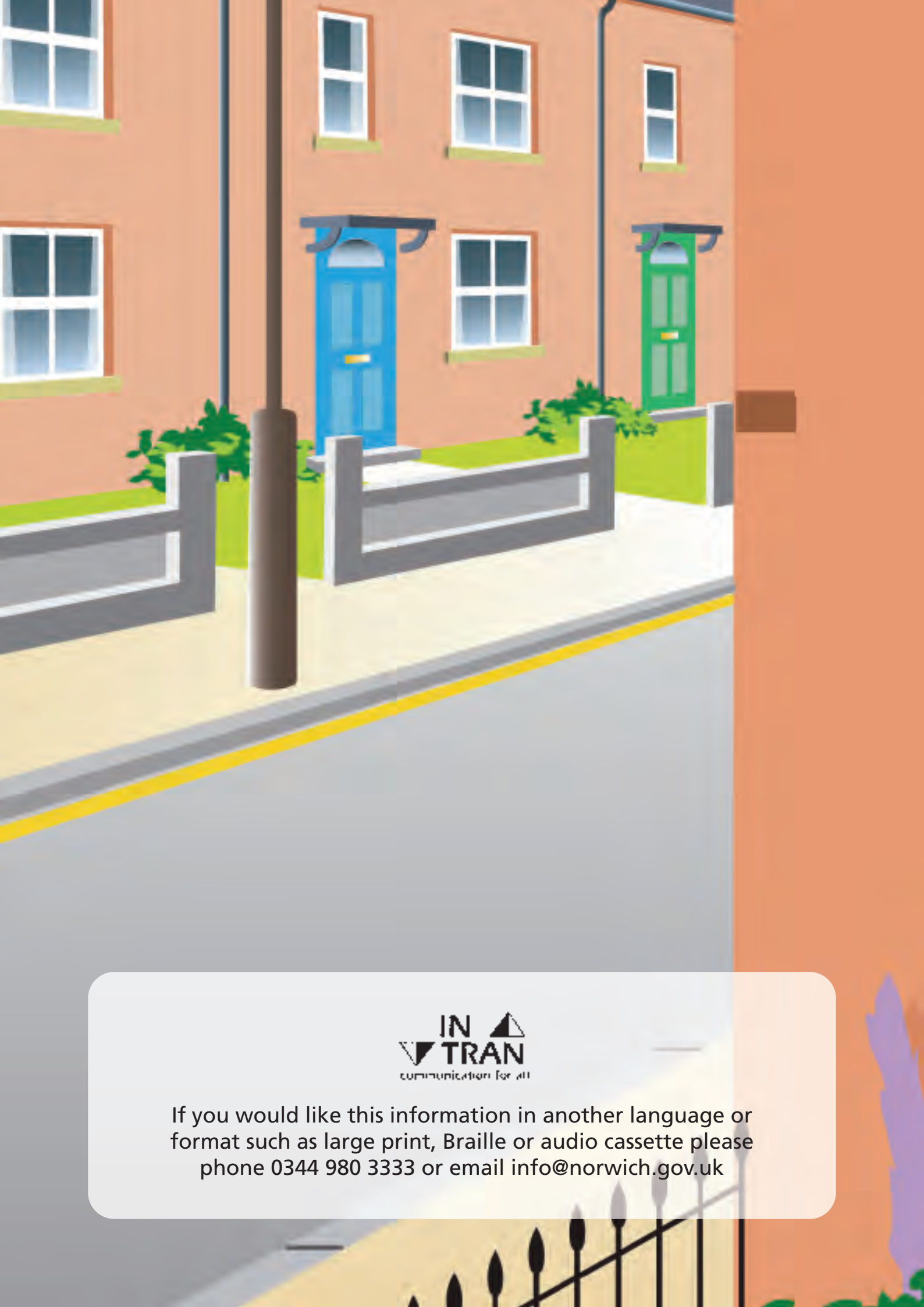
- ✗ packaging of any sort eg cardboard, plastic film
- ✗ plastic bags
- ✗ other recycling
- ✗ glass
- ✗ garden waste
- ✗ straw or other animal bedding

YES PLEASE!

All food waste – no packaging! This includes:

- ✓ leftovers from your meals
- ✓ meat – raw and cooked, including fat, bones
- ✓ fish – raw and cooked, including bones and shells
- ✓ eggs including the shells
- ✓ all dairy products eg cheese
- ✓ vegetables and fruit – raw and cooked
- ✓ bread, cakes and other baked goods
- ✓ rice, pasta and beans
- ✓ tea bags and coffee grounds
- ✓ cooking oil, lard and other fats
- ✓ tinned and dry pet food





If you would like this information in another language or format such as large print, Braille or audio cassette please phone 0344 980 3333 or email info@norwich.gov.uk