



Norwich Castle
Royal Palace Reborn

Project Updates

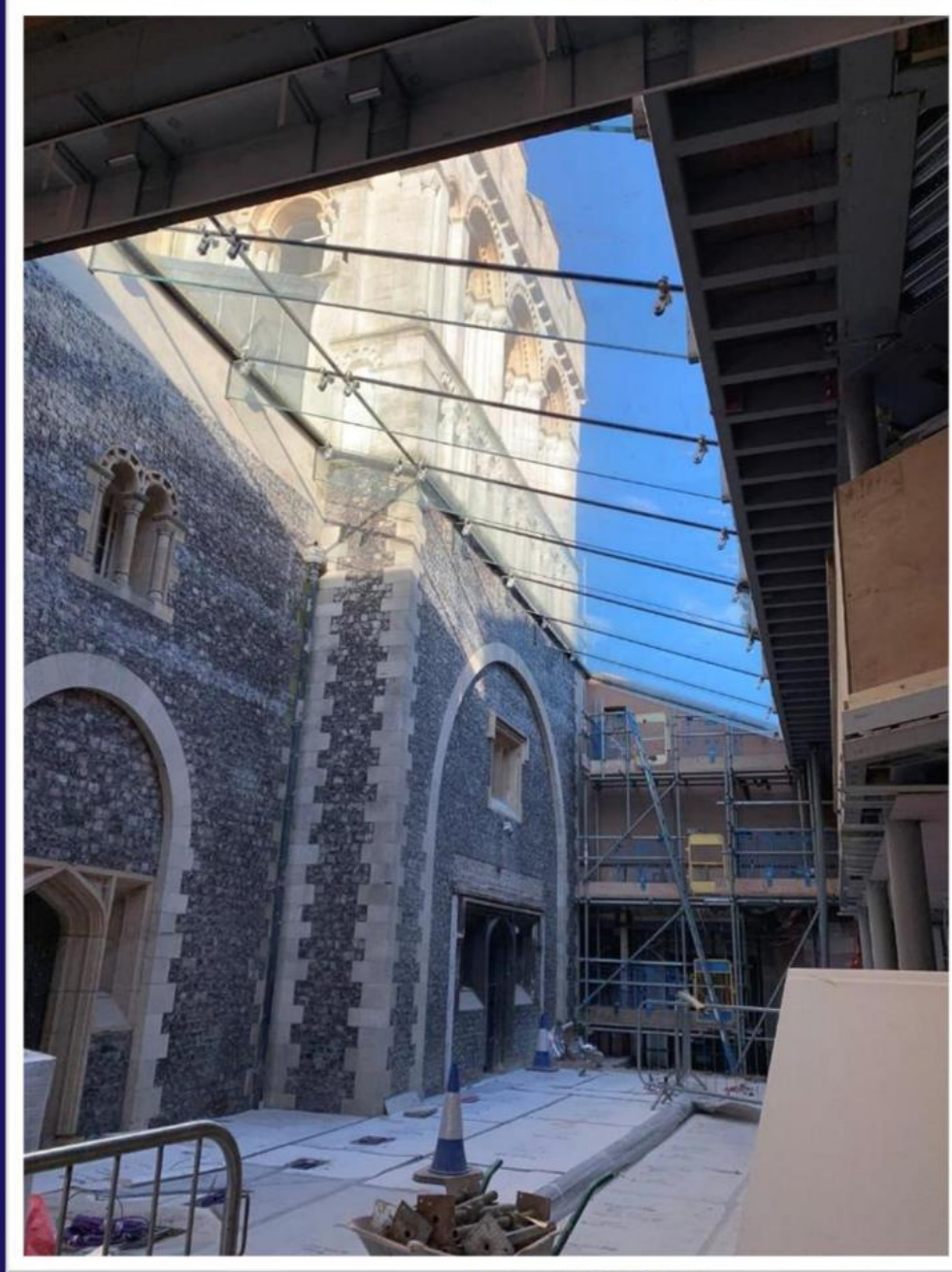
April 2024



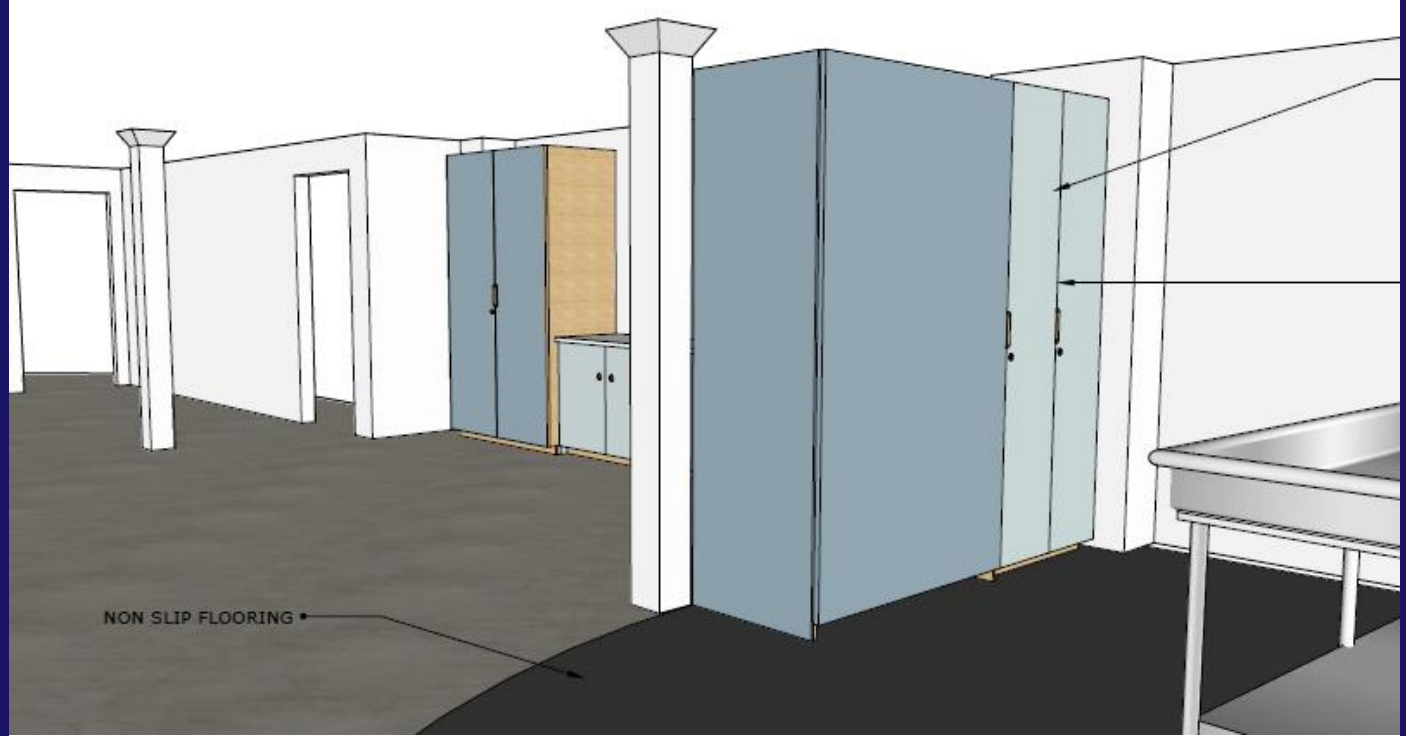
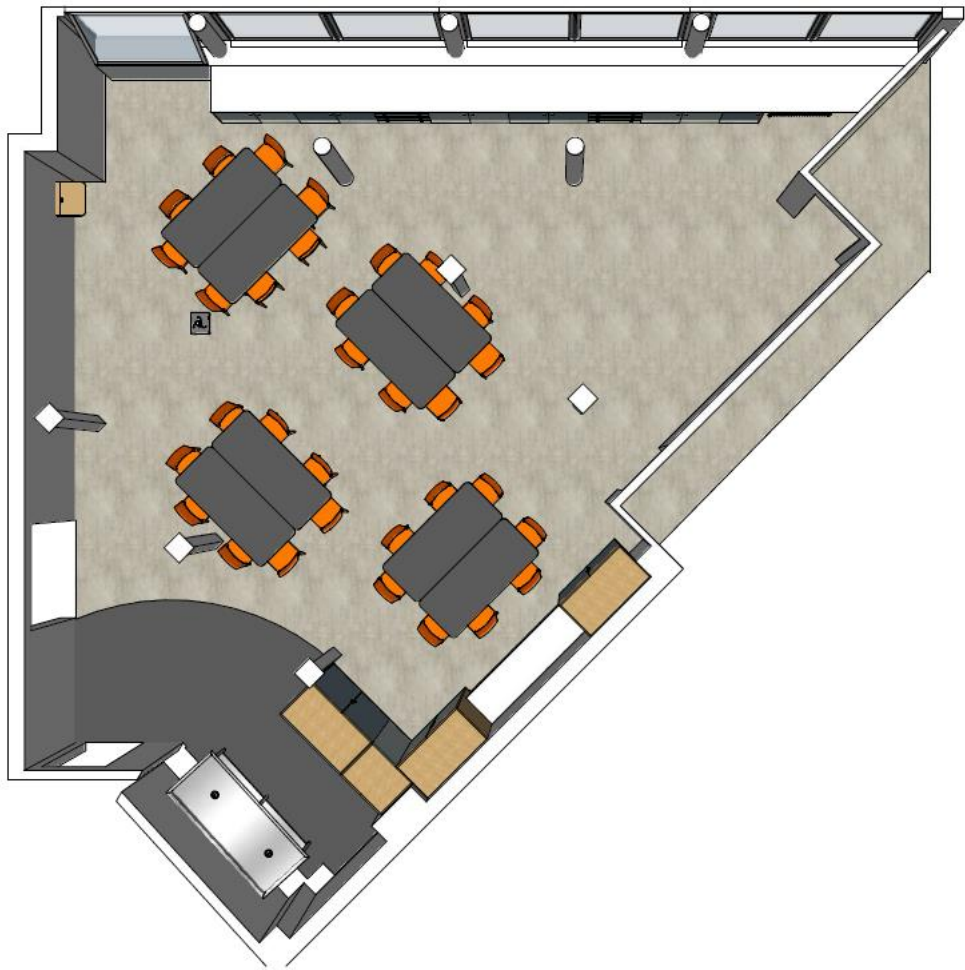
Made possible with
**Heritage
Fund**





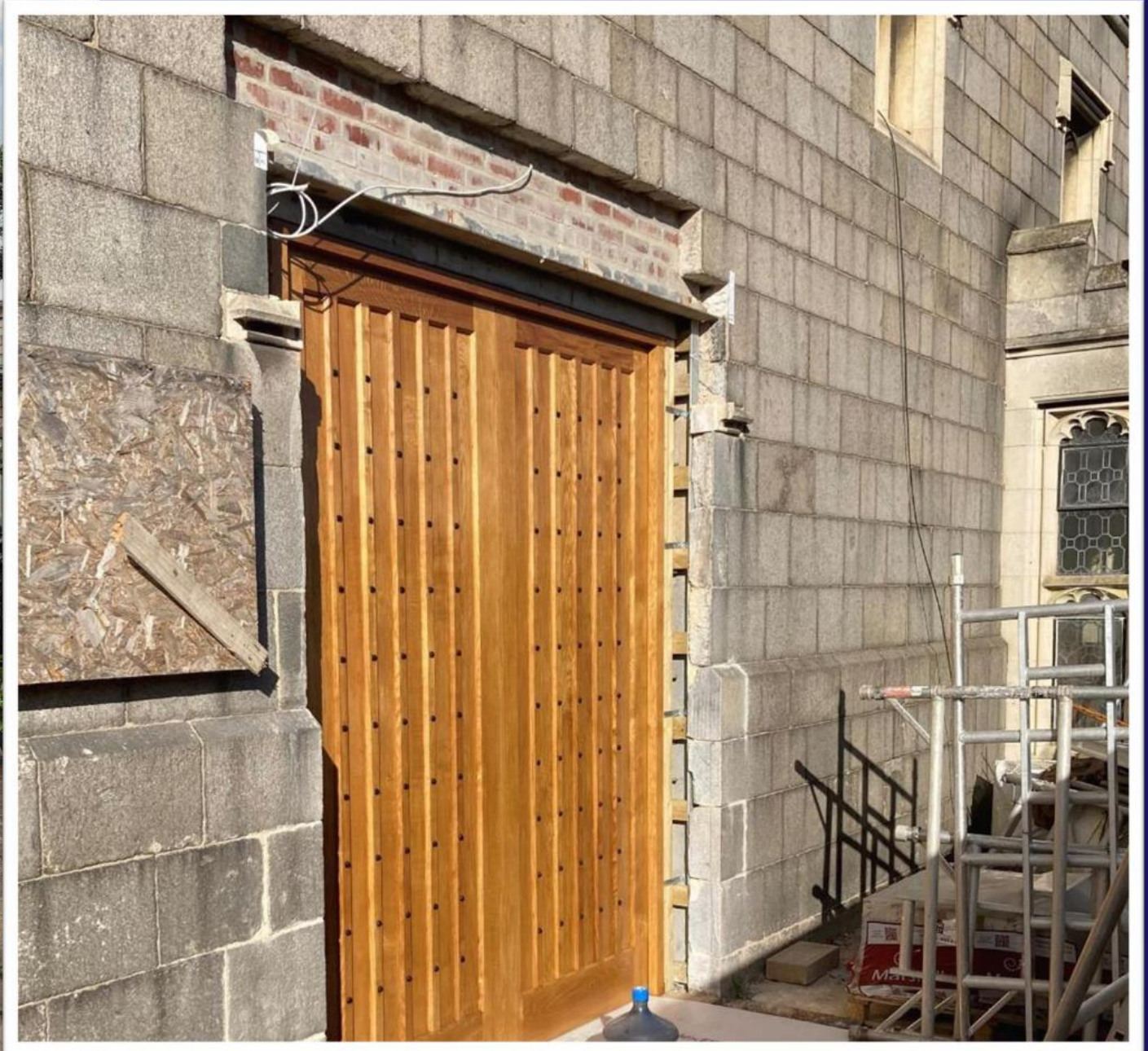




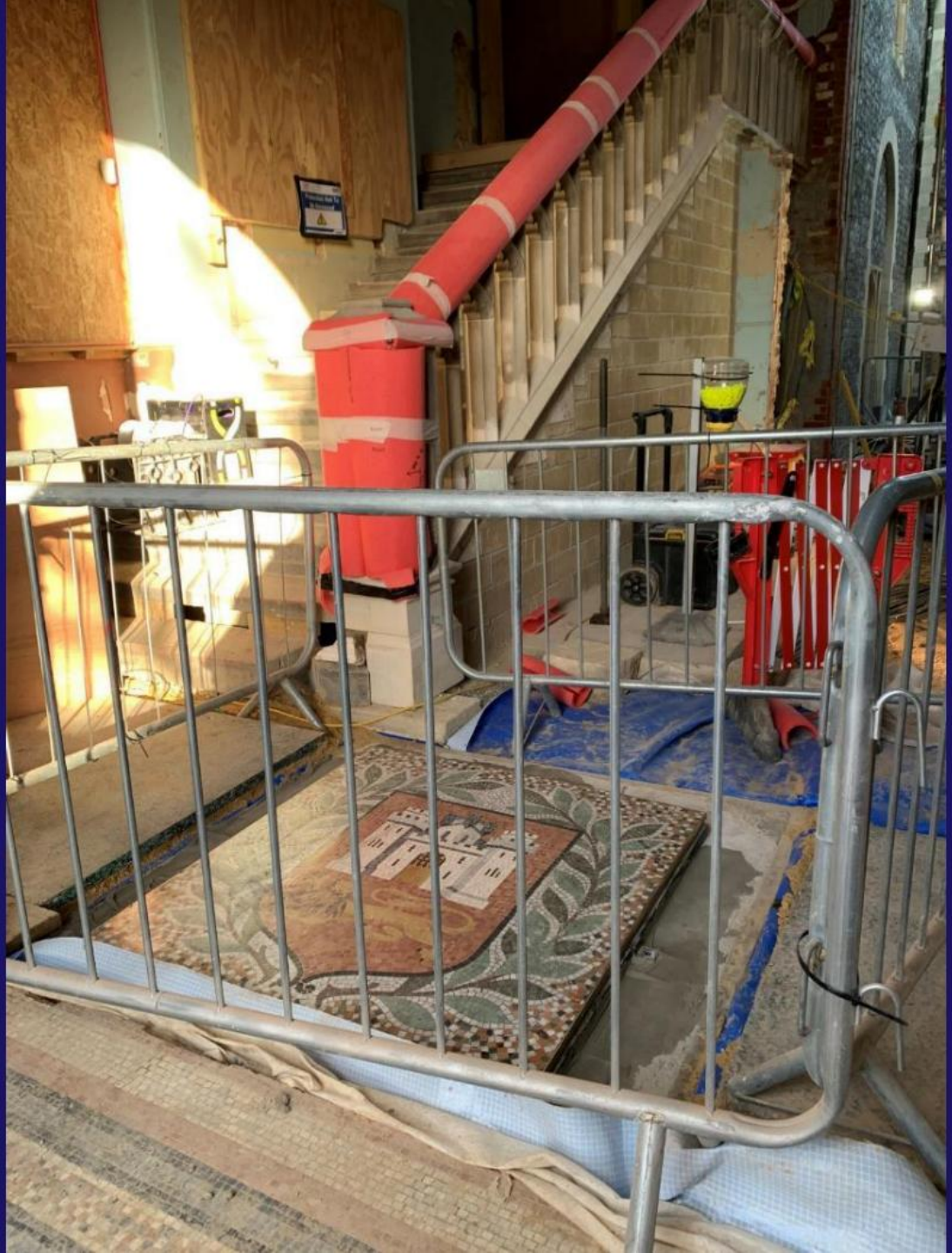
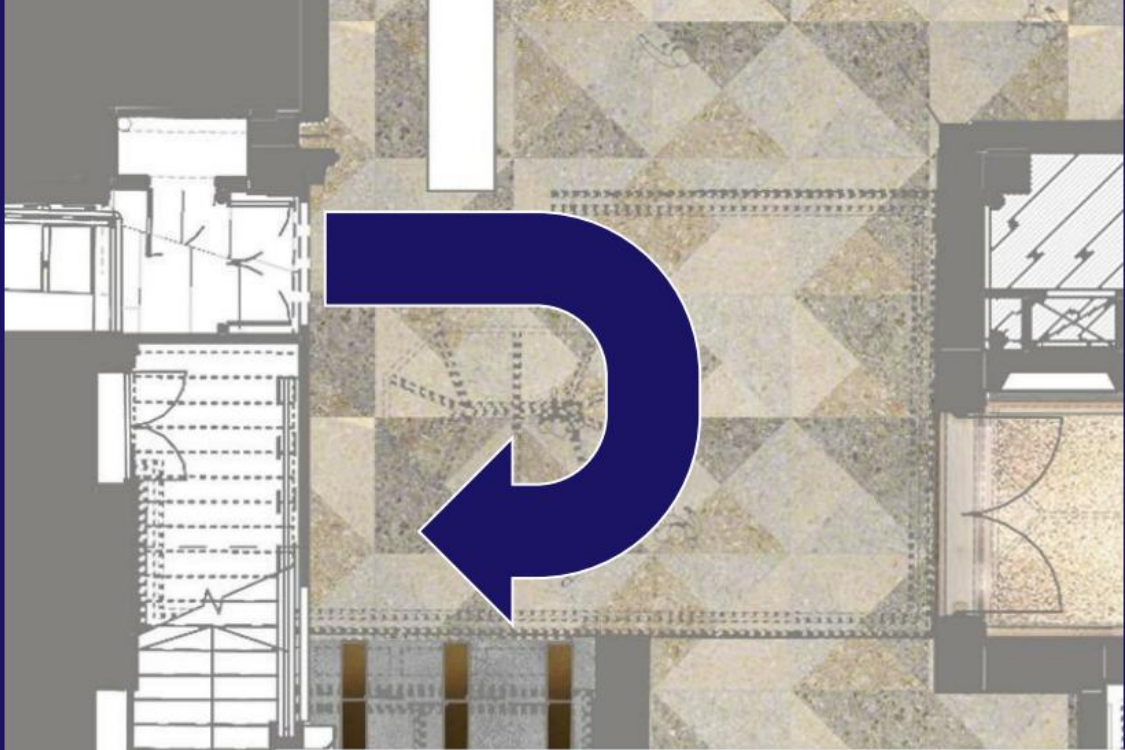


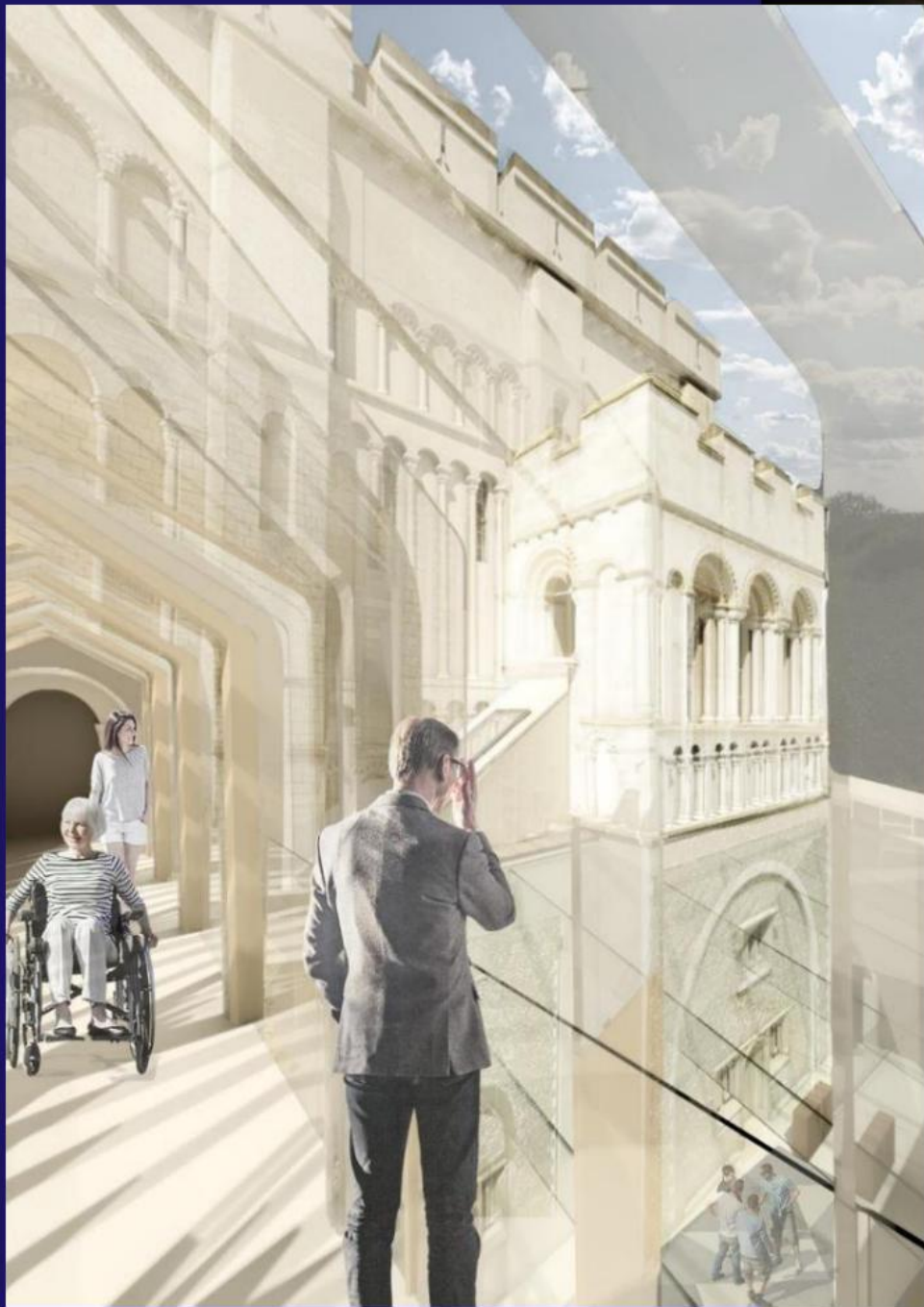




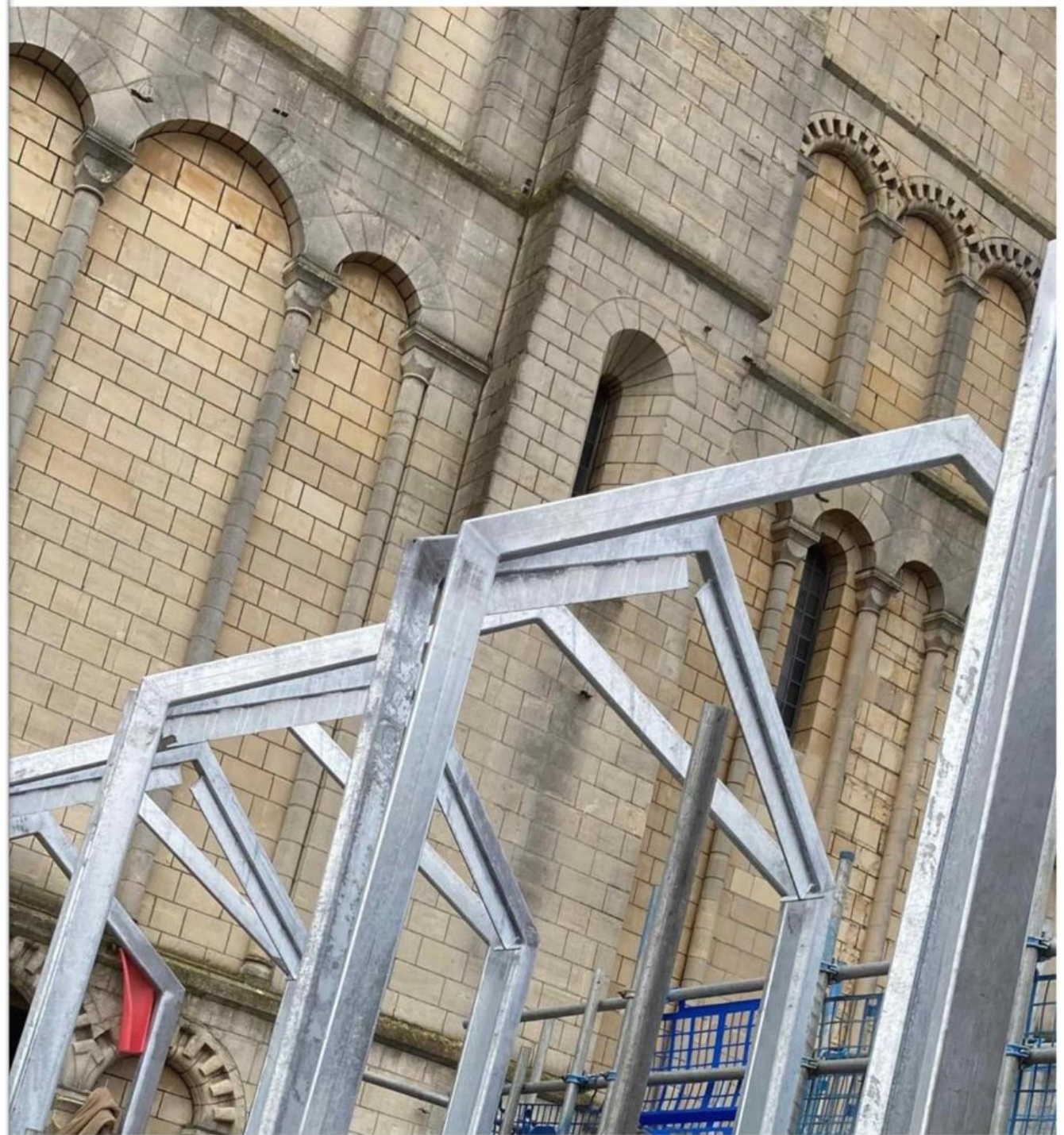






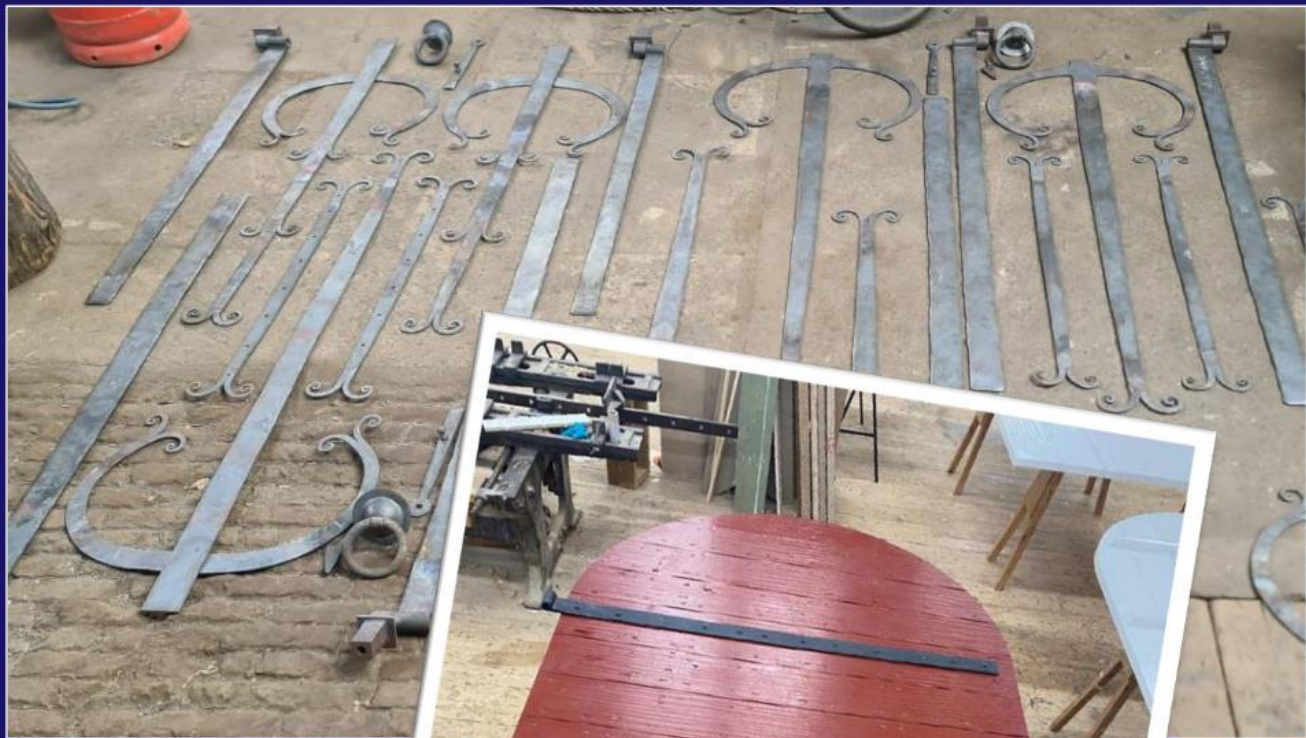






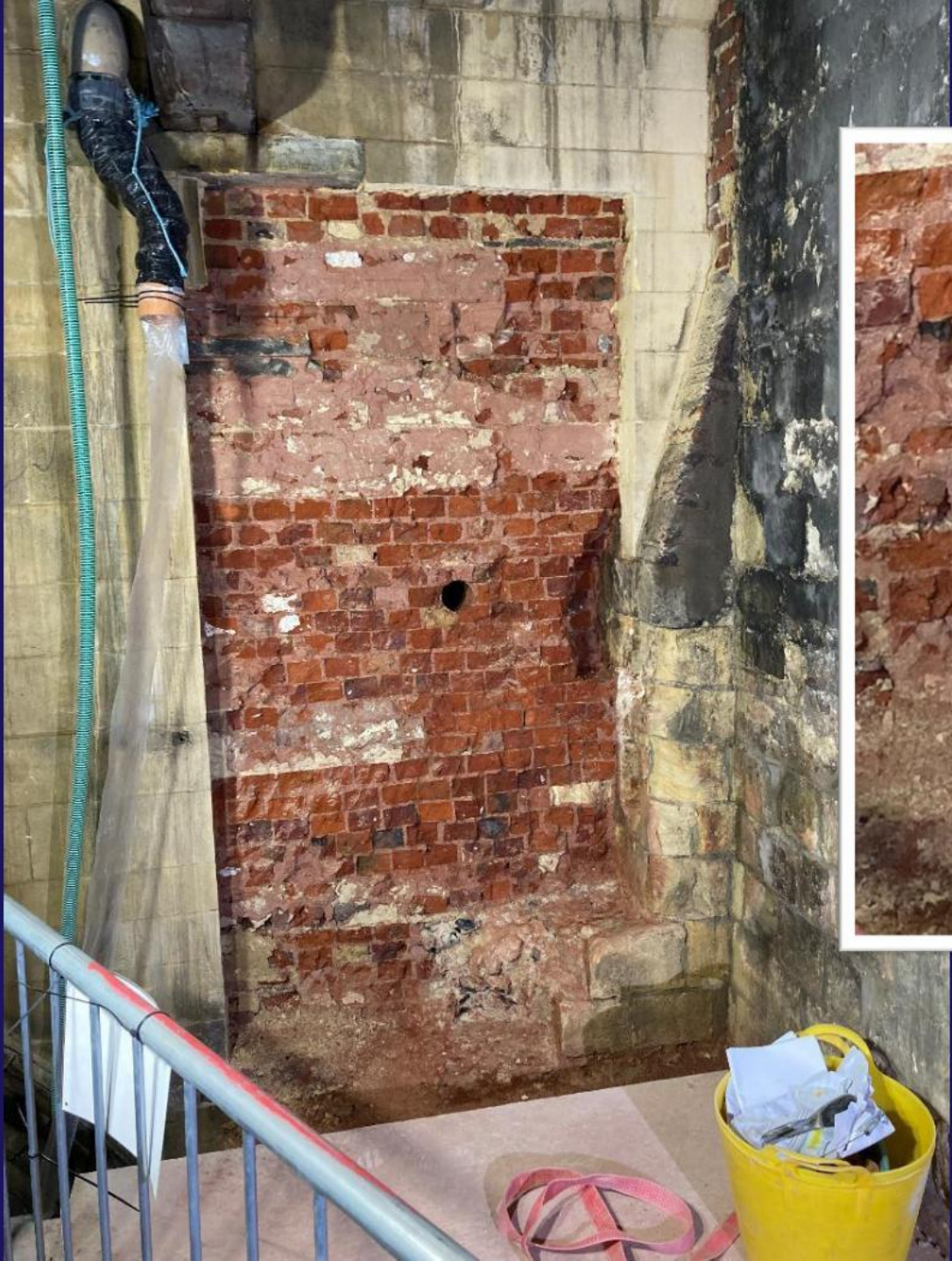















INTERNAL WALL



The Image of Christ


The **Tabulae of Account of Jesus Christ's** Christ's before a figure that followed the European Middle Ages.

Christ's before a figure that followed the European Middle Ages.

Christ's before a figure that followed the European Middle Ages.

Christ's before a figure that followed the European Middle Ages.



Christ's before a figure that followed the European Middle Ages.




KL39

KL40

KL41




Heaven on Earth


Medieval churches were built and decorated to be like a window of the world to come.

Medieval churches were built and decorated to be like a window of the world to come.

Medieval churches were built and decorated to be like a window of the world to come.



KL42



BODY OF CHRIST

1145mm(W) x 250mm(H) label @ 45 degree angle

INTERNAL WALL



They and Pilgrimage

Personal piety was expressed through pilgrimages to holy sites to receive the grace of God.

Personal piety was expressed through pilgrimages to holy sites to receive the grace of God.

Personal piety was expressed through pilgrimages to holy sites to receive the grace of God.



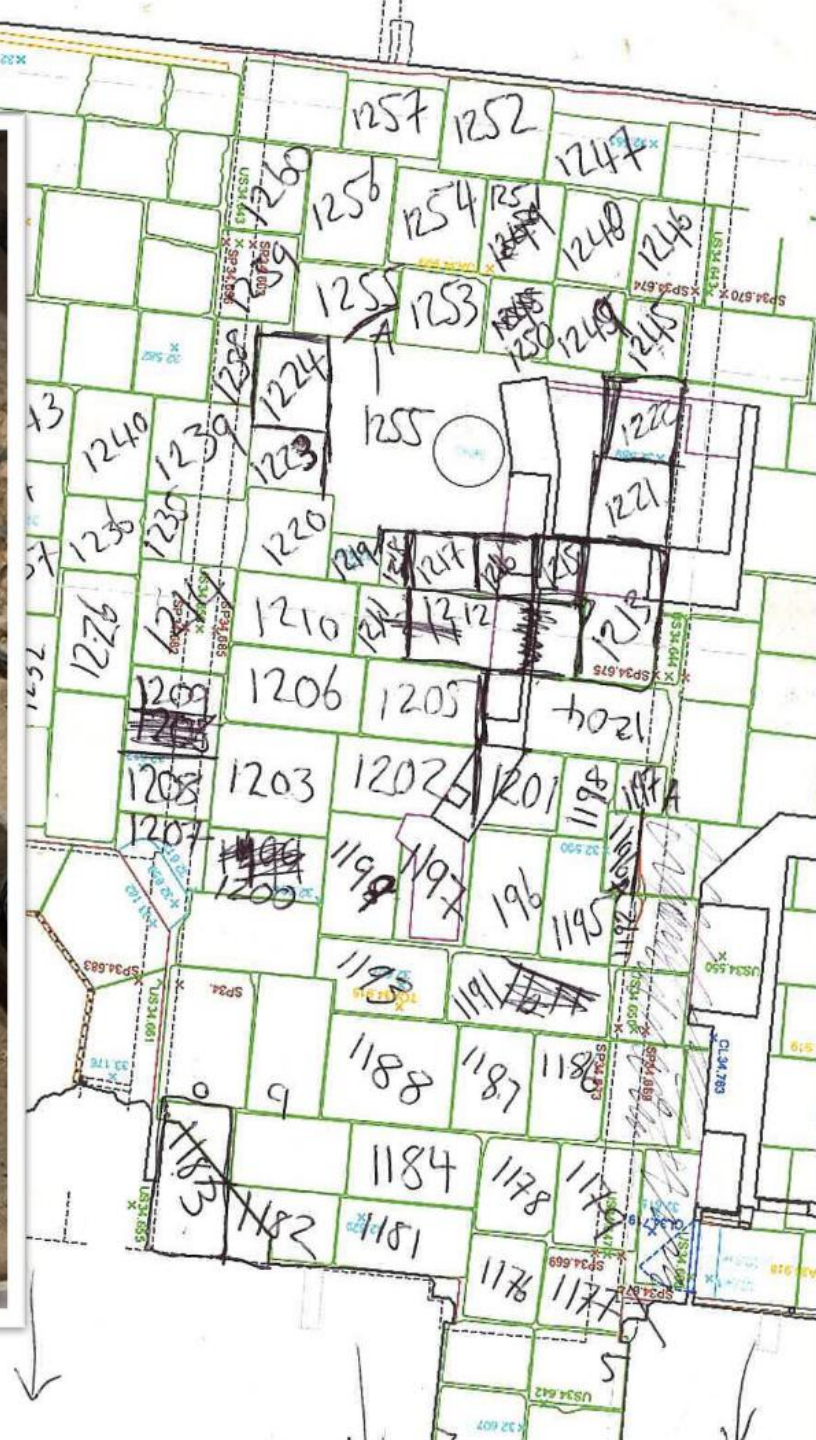


BODY OF CHRIST

750mm(W) x 250mm(H) label @ 45 degree angle

850mm(W) x 250mm(H) label @ 45 degree angle

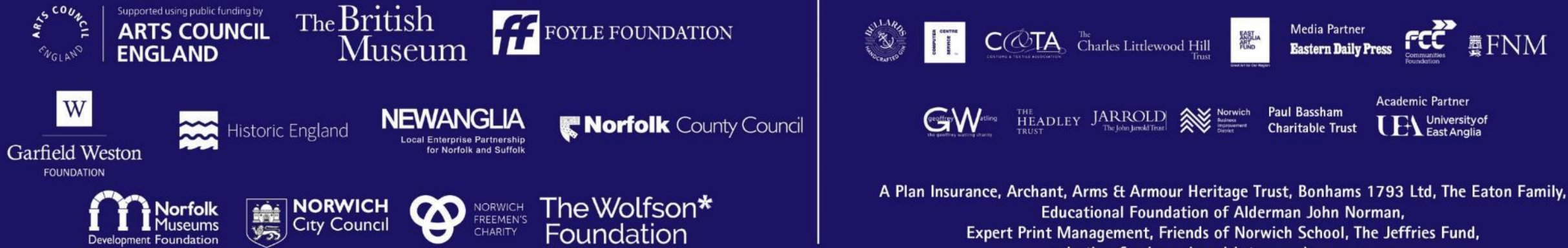




We gratefully acknowledge the support of



made possible by National Lottery players



A Plan Insurance, Archant, Arms & Armour Heritage Trust, Bonhams 1793 Ltd, The Eaton Family, Educational Foundation of Alderman John Norman, Expert Print Management, Friends of Norwich School, The Jeffries Fund, and other funders who wish to remain anonymous

Thanks to all supporters of the Keep Giving and Adopt an Object campaigns

Patron of Royal Palace Reborn: Stephen Fry





Norwich Castle
Royal Palace Reborn

Thank you for listening



Made possible with
**Heritage
Fund**