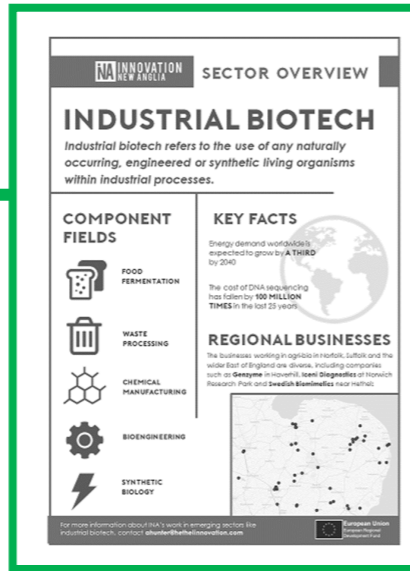


# OUR OFFER INCLUDES

## WEB CONTENT



## SECTOR REPORTS



## EVENTS + WORKSHOPS



## BUSINESS SUPPORT



# ABOUT INNOVATION NEW ANGLIA



Innovation New Anglia is an innovation-led business support programme operating in Norfolk / Suffolk from Dec 2015—Dec 2018. It encompasses delivery partners **Hethel Innovation**, **Norfolk County Council**, **Suffolk County Council** and **Norwich Research Park**.



For more information about **BIOTECH EAST**, please email our Sector Development Manager at [ahunter@hethelinnovation.com](mailto:ahunter@hethelinnovation.com).

The Innovation New Anglia project is part financed by the England European Regional Development Fund as part of the European Structural and Investment Funds Growth Programme 2014-2020. The Department for Communities and Local Government is the Managing Authority for European Regional Development Fund. Established by the European Union, European Regional Development Fund funds help local areas stimulate their economic development by investing in projects which will support innovation, businesses, create jobs and local community regenerations.



# BIOTECH EAST

**BIO TECH IS**

the application of biological processes in products and technologies which help us **heal, fuel and feed** the world

all **economic activity** derived from bio-products and processes

which contributes to **sustainable and resource-efficient solutions**

**THE BIOECONOMY IS**

to challenges we face in **food, chemicals, materials, energy production, health and environmental protection.**

## IN NORFOLK AND SUFFOLK

**INDUSTRIAL BIOTECH**

The ~20 **anaerobic digestion** sites in Norfolk and Suffolk together can produce

**20,000 KWE OF POWER**

**MED TECH**

Health and social care in the region employs

**>100k PEOPLE** and has an estimated GVA of

**£2.8 BILLION**

**FOOD + LIFELONG HEALTH**

The **largest group** of Norfolk and Suffolk's top 100 companies are in the food and drink sector

**BRITISH SUGAR**

**GREENE KING**

**Kinnerton**

**ADNAMs**

**AGRI BIO**

Agriculture in the two counties employs

**21,400 PEOPLE**

**GENOMICS + BIOINFORMATICS**

Norwich and Ipswich saw respective growth in their **digital GVA** of

**16% AND 22%** between 2010-14

## CHALLENGES FOR THE REGION



Agricultural productivity in the UK (including Norfolk and Suffolk) **HAS PLATEAUED FOR 20 YEARS**



A **DISPROPORTIONATE INCREASE** in the number of over-65s is expected in the UK in the next 15 years, and the East of England already has **MORE THAN THE NATIONAL AVERAGE**

The Climate Change Act **COMMITTS** the UK to reduce greenhouse gas emissions by a third by 2020...



but energy consumption is still **EXPECTED TO RISE**



The number of obesity-related admissions to hospital in Norfolk, Suffolk and Cambridgeshire have risen by **MORE THAN A QUARTER** between 2013/14 and 2014/15

## CHALLENGES FOR BIOBUSINESS

With ongoing **technological change**, increasing **competition** and an uncertain **political environment**, biobusinesses in the region face a number of challenges, including

**LOW**

**output, jobs and skill levels** in the region except Cambridge

**ONLY 10%**

of the top 20 **major industrial funders** to UEA are local

Key indicators of activity are

**IN DECLINE**

## NETWORK OBJECTIVES



**BIOTECH EAST** is working with businesses in biotech and the wider bioeconomy to develop a dynamic network in Norfolk, Suffolk and the wider East of England.

To achieve this, we aim to act as a:

**SOURCE** of unique information & guidance

Through **mapping and market reports, newsletters, workshops and consultancy**

**PIONEER** of approaches to innovation

Through **playbooks, toolkits, pilot and challenge-led projects**

**PLATFORM** for new solutions

Through **collaboration events, hackathons and supply chain networking**

**VOICE** of innovative industries

Through **public sector representation, futurescaping and special interest groups**

**HOST** for challenge- and ideas-led events

Through **inspiration events, our entrepreneurs club, partnered events and sponsorships**

## NETWORK IMPACT

As **BIOTECH EAST** develops we will maintain a **focus on impact**, delivered through:

- **A common language**
- **Awareness of issues**
- **Direct support**
- **Resource creation**
- **Spaces for innovation**
- **Strategic input**
- **A clear vision**
- **Culture change**