

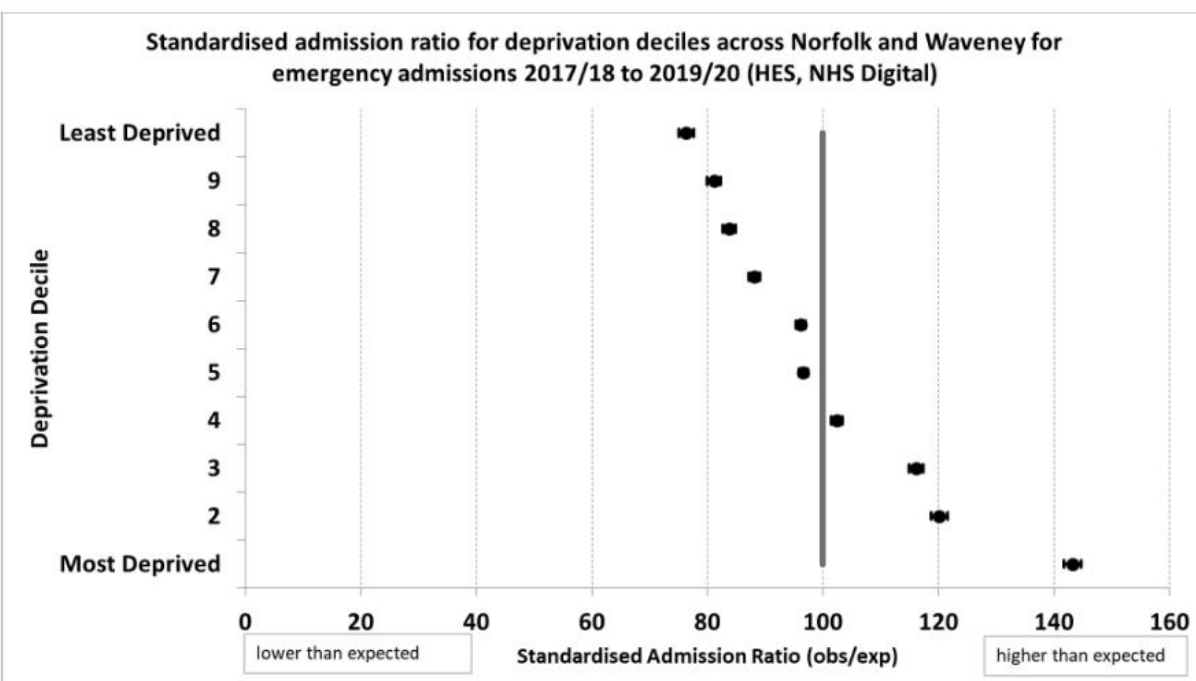
Health inequalities in Norfolk and Waveney

Chris Butwright,

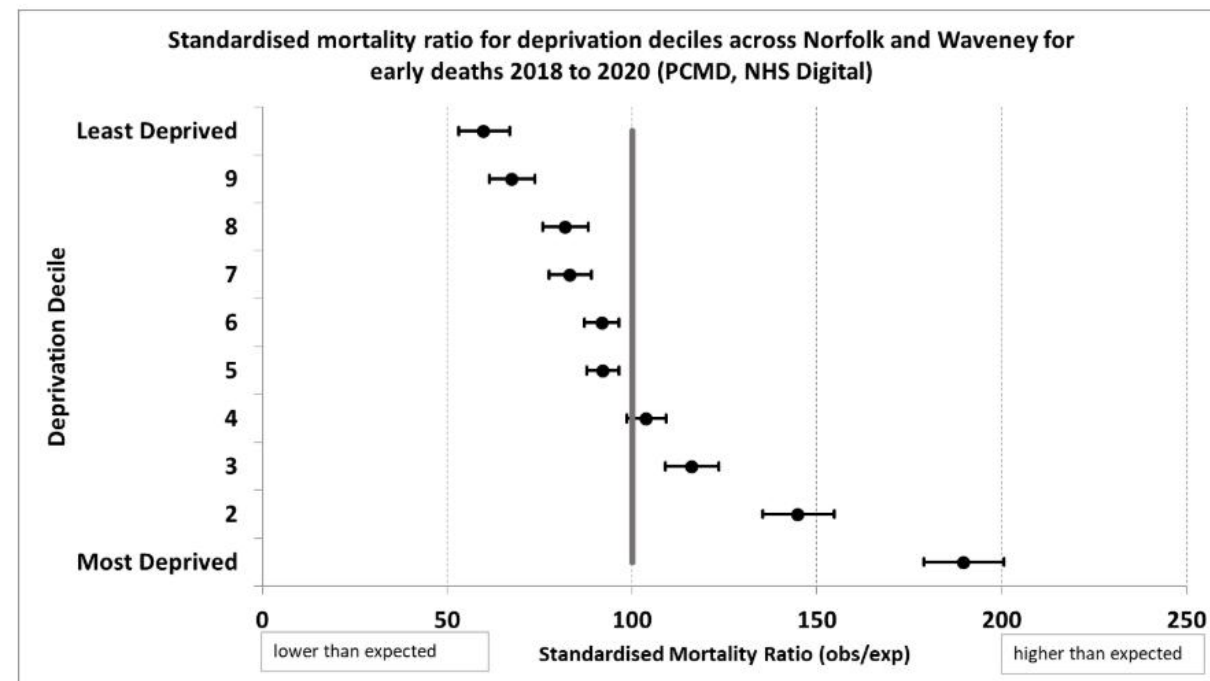
Assistant director Public Health Prevention & Policy

Variation in outcomes by deprivation decile

These graphs clearly show a gradient from most deprived to least deprived. The most deprived are more likely to have a worse outcome (emergency admission or early death) than the least deprived.

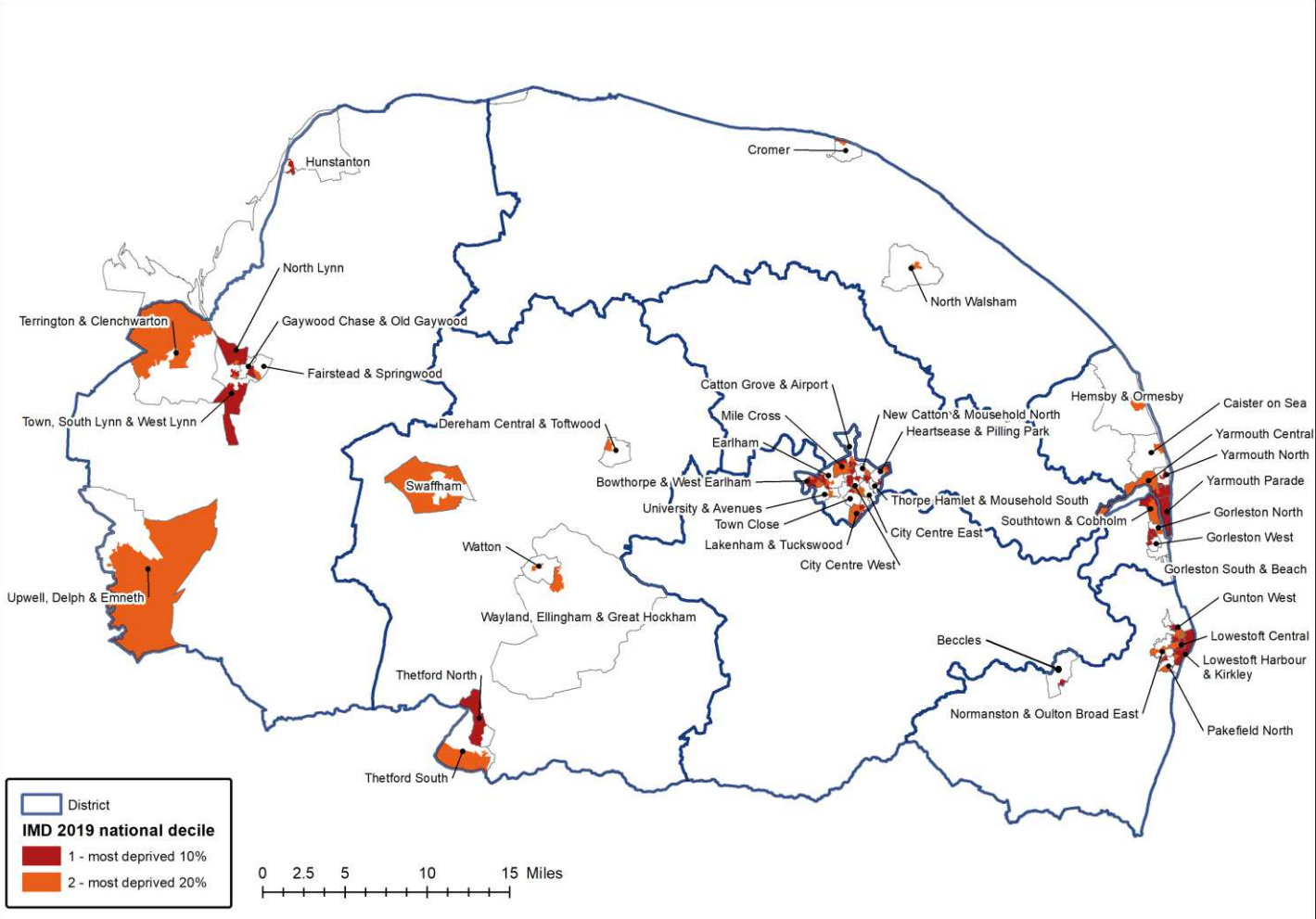


Emergency admissions standardised to the Norfolk and Waveney average.



Early deaths (aged under 75) standardised to the Norfolk and Waveney average.

There are 42 communities across Norfolk and Waveney where some or all the population are amongst the 20% most deprived in England. However, none of these communities are in Broadland or South Norfolk.



40% of the populations of Great Yarmouth and Norwich live in the most deprived 20% of areas in England compared to 16% for Norfolk and Waveney as a whole.

| District | Most deprived decile 1 Core 20 | Most deprived decile 2 Core 20 | Other deciles | Core 20 Population |
|---------------------|--------------------------------|--------------------------------|---------------|--------------------|
| Breckland | 2,500 | 12,300 | 126,500 | 14,700 |
| Broadland | 0 | 0 | 131,900 | 0 |
| Great Yarmouth | 26,900 | 12,800 | 59,500 | 39,700 |
| KLWN | 12,100 | 11,200 | 127,900 | 23,300 |
| North Norfolk | 0 | 2,800 | 102,400 | 2,800 |
| Norwich | 27,400 | 28,100 | 86,700 | 55,500 |
| South Norfolk | 0 | 0 | 143,100 | 0 |
| Waveney | 16,000 | 11,800 | 90,700 | 27,900 |
| Norfolk and Waveney | 84,900 | 78,900 | 868,800 | 163,800 |
| England | 5,603,900 | 5,697,200 | 45,249,000 | 11,301,100 |

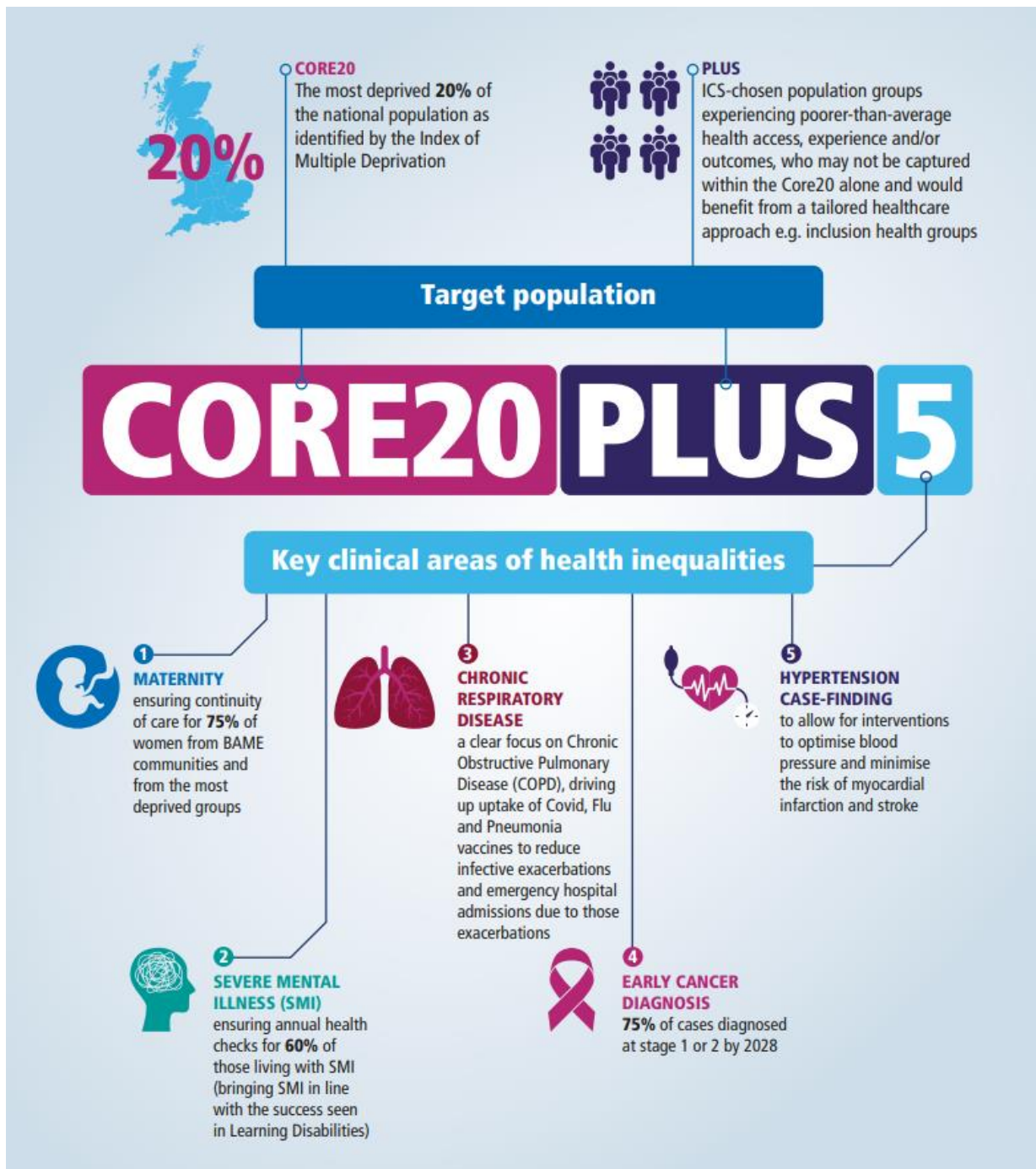
| District | Most deprived decile 1 Core 20 | Most deprived decile 2 Core 20 | Other deciles | Core 20 Population |
|---------------------|--------------------------------|--------------------------------|---------------|--------------------|
| Breckland | 1.7% | 8.7% | 89.6% | 10.4% |
| Broadland | 0.0% | 0.0% | 100.0% | 0.0% |
| Great Yarmouth | 27.1% | 12.9% | 60.0% | 40.0% |
| KLWN | 8.0% | 7.4% | 84.6% | 15.4% |
| North Norfolk | 0.0% | 2.6% | 97.4% | 2.6% |
| Norwich | 19.3% | 19.7% | 61.0% | 39.0% |
| South Norfolk | 0.0% | 0.0% | 100.0% | 0.0% |
| Waveney | 13.5% | 10.0% | 76.5% | 23.5% |
| Norfolk and Waveney | 8.2% | 7.6% | 84.1% | 15.9% |
| England | 9.9% | 10.1% | 80.0% | 20.0% |

The 42 communities across Norfolk and Waveney where some or all the population are amongst the 20% most deprived in England.

| District | Community / MSOA Name | Most deprived decile 1 Core 20 | Most deprived decile 2 Core 20 | Other decile | Core 20 Population | Norfolk and Waveney Rank (Deprivation Score) |
|----------------|------------------------------------|---|---|-----------------|-----------------------|--|
| Breckland | Dereham Central & Toftwood | 0 | 1,980 | 9,880 | 1,980 | 54 (20.2) |
| | Swaffham | 0 | 2,700 | 5,630 | 2,700 | 26 (27.5) |
| | Thetford North | 2,460 | 0 | 4,050 | 2,460 | 19 (33.1) |
| | Thetford South | 0 | 3,650 | 5,410 | 3,650 | 20 (30.6) |
| | Watton | 0 | 1,530 | 7,070 | 1,530 | 67 (18.7) |
| | Wayland, Ellingham & Great Hockham | 0 | 2,410 | 7,220 | 2,410 | 32 (25.7) |
| Great Yarmouth | Caister on Sea | 0 | 1,380 | 7,600 | 1,380 | 49 (21.1) |
| | Gorleston North | 3,230 | 1,370 | 3,260 | 4,600 | 7 (43.1) |
| | Gorleston South & Beach | 0 | 1,670 | 7,090 | 1,670 | 40 (23.4) |
| | Gorleston West | 3,070 | 0 | 4,460 | 3,070 | 12 (36.5) |
| | Hemsby & Ormesby | 0 | 1,590 | 7,530 | 1,590 | 44 (22.2) |
| | Southtown & Cobholm | 2,440 | 5,030 | 0 | 7,470 | 6 (43.5) |
| | Yarmouth Central & Northgate | 5,800 | 1,750 | 0 | 7,560 | 2 (57.3) |
| | Yarmouth North | 2,740 | 0 | 3,130 | 2,740 | 11 (38.8) |
| | Yarmouth Parade | 9,610 | 0 | 0 | 9,610 | 1 (67.2) |

| | Community / MSOA Name | Most deprived decile 1 Core 20 | Most deprived decile 2 Core 20 | Other decile | Core 20 Population | Norfolk and Waveney Rank (Deprivation Score) |
|---|--------------------------------|---|---|-----------------|-----------------------|--|
| King's Lynn and West Norfolk | Fairstead & Springwood | 0 | 2,880 | 6,330 | 2,880 | 30 (25.9) |
| | Gaywood Chase & Old Gaywood | 2,020 | 0 | 5,190 | 2,020 | 25 (28.0) |
| | Hunstanton | 1,610 | 0 | 3,630 | 1,610 | 24 (28.2) |
| | North Lynn | 5,080 | 1,630 | 0 | 6,700 | 5 (47.4) |
| | Terrington & Clenchwarton | 0 | 1,540 | 5,570 | 1,540 | 39 (23.4) |
| | Town, South Lynn & West Lynn | 3,440 | 1,630 | 6,080 | 5,070 | 13 (36.0) |
| | Upwell, Delph & Emneth | 0 | 3,490 | 6,450 | 3,490 | 23 (29.1) |
| North Norfolk | Cromer | 0 | 1,130 | 6,630 | 1,130 | 28 (26.3) |
| | North Walsham | 0 | 1,630 | 11,310 | 1,630 | 56 (19.9) |
| Norwich | Bowthorpe & West Earlham | 3,630 | 3,340 | 5,280 | 6,980 | 17 (33.6) |
| | Catton Grove & Airport | 2,130 | 1,510 | 7,310 | 3,640 | 22 (29.1) |
| | City Centre East | 0 | 1,470 | 5,510 | 1,470 | 35 (24.4) |
| | City Centre West | 4,870 | 3,120 | 3,570 | 7,990 | 9 (41.9) |
| | Earlham | 4,810 | 1,980 | 5,050 | 6,790 | 14 (35.0) |
| | Heartsease & Pilling Park | 2,740 | 3,070 | 4,130 | 5,810 | 15 (35.0) |
| | Lakenham & Tuckswood | 1,430 | 4,630 | 3,280 | 6,060 | 18 (33.4) |
| | Mile Cross | 4,430 | 5,470 | 1,180 | 9,900 | 10 (41.6) |

| District | Community / MSOA Name | Most deprived decile 1 Core 20 | Most deprived decile 2 Core 20 | Other decile | Core 20 Population | Norfolk and Waveney Rank (Deprivation Score) |
|---------------------|---------------------------------|-----------------------------------|-----------------------------------|--------------|-----------------------|---|
| Norwich | New Catton & Mousehold North | 0 | 1,780 | 8,130 | 1,780 | 31 (25.9) |
| | Thorpe Hamlet & Mousehold South | 1,860 | 0 | 3,890 | 1,860 | 27 (27.4) |
| | Town Close | 1,500 | 0 | 9,650 | 1,500 | 71 (18.2) |
| | University & Avenues | 0 | 1,710 | 11,340 | 1,710 | 75 (17.0) |
| Waveney | Beccles | 1,500 | 0 | 7,060 | 1,500 | 38 (23.6) |
| | Gunton West | 4,190 | 1,320 | 2,630 | 5,510 | 8 (42.4) |
| | Lowestoft Central | 3,740 | 6,310 | 0 | 10,050 | 4 (48.0) |
| | Lowestoft Harbour & Kirkley | 5,060 | 1,480 | 1,220 | 6,540 | 3 (56.4) |
| | Normanston & Oulton Broad East | 0 | 1,540 | 6,020 | 1,540 | 29 (26.3) |
| | Pakefield North | 1,560 | 1,180 | 4,160 | 2,750 | 16 (33.7) |
| Norfolk and Waveney | | 84,950 | 78,890 | 212,910 | 163,830 | |



“Core 20 plus 5 Initiative” - Tackling Health Inequalities in the NHS

A framework to support Integrated Care Systems to drive targeted action in health inequalities improvements in the following areas:

Core 20 – Most deprived 20% of our population

PLUS – Other population groups as identified by local population health data e.g. ethnic minority communities.

5 – Targeting five key clinical areas of health inequalities.