

Environment Development and Transport Committee

Item No.

Report title:	Highway Parish Partnership Schemes 2017/18
Date of meeting:	17 March 2017
Responsible Chief Officer:	Tom McCabe – Executive Director, Community and Environmental Services
<p>Strategic impact</p> <p>The Highways and Transport Service contributes directly to supporting the following Council priority:</p> <p><i>“Good infrastructure – We will make Norfolk a place where businesses can succeed and grow. We will promote improvements to our transport and technology infrastructure to make Norfolk a great place to do business.”</i></p> <p>The Parish Partnership programme delivers small highway improvements which are considered a priority by local communities and support Local Transport Plan (LTP) objectives. It is also covered by a “vital signs” performance indicator.</p> <p>In March 2016, EDT Committee agreed to continue the programme using £300,000 of the highway improvements budget to fund up to 50% of each bid, with consideration of increased contributions for parish councils with incomes below £2,000.</p>	

Executive summary

This report sets out the proposed parish partnership programme for 2017/18 following analysis and review of the applications submitted.

Recommendations

That members:

- 1. Approve all bids listed in Appendix B for inclusion in the Parish Partnership Programme for 2017/18.**

1. Background

- 1.1. The Parish Partnership Scheme began in September 2011, when Parish and Town Councils were invited to submit bids for local highway improvements, with the County Council initially funding up to 50% of bid costs. Funding is therefore targeted to meet needs identified at a local level and helps us to support and promote our role in enabling communities.
- 1.2. The programme has been well received by Parish/Town Councils and members and feedback has been very positive from communities. Key features are that it:

- Delivers local priorities identified by local people
- Draws in additional funding for small scale highway improvements
- Helps communities have more of “a say”.

1.3. The most popular bids have been for:

- Trods - a simplified, lower cost alternative to footways (often constructed using recycled road surface material)
- Vehicle Activated Signs (VAS) which flash up warnings to drivers. Subsequently owned/maintained by the County Council
- SAM2 (mobile VAS units which flash vehicle speed as a reminder to the driver). Subsequently owned/maintained by the Parish Council

2. Funding

- 2.1. The Parish Partnership Programme was previously renewed on an annual basis. In March 2015 ETD Committee agreed to use £300,000 of the highway improvements budget, from 2015/16 onwards to fund up to 50% of each bid, with consideration of increased contributions for parish councils with incomes below £2,000.
- 2.2. The Norfolk Safety Camera Partnership (SafeCam) has again agreed to contribute £80,000 towards SAM2 bids in 2017/18. This welcome support boosts the total available County Council funding to £380,000 and emphasises the important role that the Parish Partnership Programme can have in casualty reduction initiatives.
- 2.3. In 2016/17 letters inviting bids were sent out in June 2016 with a closing date of 16 December 2016 (Appendix A), to giving bidders good time to develop their proposals.

3. Bids submitted

- 3.1 157 bids were received for 2017/18, with a short deadline extension allowed for 5 bids.
- 3.2 The number of bids received over the past six years by Parish is mapped in Appendix C, showing a reasonable distribution across Norfolk
- 3.3 The number and value of bids submitted over the past six years by District is shown in Appendix D. This indicates a reasonable spread of bids in relation to the size of each District, although the number (18) and value (£102,643) of bids within the Great Yarmouth Borough Council area continues to be comparatively low.
- 3.4 We received 6 bids from Parishes with precepts (identified from District Council data) below £2,000, summarised in the table in 3.6 below. Bid values fall within a narrow range of £3,227 to £5,000. Bidders are seeking NCC support of between 50% and 80%.

3.5

Parish	District	Precept	Scheme type	Comments
Kimberley and Carleton Forehoe Parish Council	South Norfolk	£1,886	Village Gateways	Parish seeking £4,000 (80%) toward a £5,000 bid
Somerton	Great Yarmouth	£1,704	SAM2	Parish seeking £1,640 (50%) toward a £3,280 bid
Felmingham	North Norfolk	£1,500	SAM2	Parish seeking £1,613 (50%) toward a £3,227 bid with parish and Village hall each contributing 25%
Sidestrand	North Norfolk	£1,300	SAM2	Parish seeking £2,700 (59%) toward a £4,600 bid
Little Massingham	King's Lynn and West Norfolk	£750	SAM2	Parish seeking £2,380 (70%) toward a £3,389 bid
Castle Rising	King's Lynn and West Norfolk	£600	Village Gateways	Parish seeking £2,555 (62%) toward a £4,092 bid

3.6 In 2012/13 and 2013/14 the County Council offered 75% support for all bids (50% in subsequent years) which helped stimulate demand. The following approach is therefore proposed to support bidders with annual income below £2,000:

- 75% County Council contribution
- £5,000 maximum bid value
- Offer available only once to any bidder.

3.7 This is considered to be an offer which is both reasonable to low-income bidders whilst still being equitable towards other bidders with moderate incomes. It will help encourage first-time bidders who may, if the scheme continues, subsequently wish to consider the alternative funding sources outlined on the NCC website. The total NCC contribution toward these 6 bids would be £17,691 (compared with £11,794 had our contribution been 50%) which is also considered reasonable, and still allowing us to support all viable bids.

3.8 There are 10 other bidders whose precepts are unidentified, but in all cases their bids are clearly based on a 50% contribution and with no additional support from NCC requested. It has therefore been assumed they have sufficient resources and have consequently been excluded from consideration of additional NCC support.

4. Assessment of Bids

4.1. Bids have been assessed through a combination of the following factors:

- Contribution to LTP objectives
- Outcome for the local community
- Value for money

This resulted in a score which enabled ranking of bids in priority order.

4.2. 157 bids were submitted and assessed, shown in the table below along with the value of these bids considered viable.

4.3.

Scheme Types	No	£ Original bids	£ Assessed bids	£ NCC Contribution	£ Parish Contribution
20mph Wig Wags	6	£41,940	£41,940	£20,970	£20,970
Bus Shelter	12	£80,735	£80,735	£40,367	£40,367
Crossing Point	4	£96,622	£53,000	£23,500	£29,500
Grit Bin	1	£149	£0	£0	£0
Drainage	1	£20,000	£20,000	£10,000	£10,000
Fencing	2	£5,260	£760	£380	£380
Footpath	6	£46,902	£27,189	£13,595	£13,595
Access	1	£6,000	£0	£0	£0
Hardstanding	4	£10,203	£10,203	£5,102	£5,102
Junction Improvement	0	£0	£0	£0	£0
Kerbing	1	£9,476	£9,476	£4,738	£4,738
Street Lighting	1	£26,111	£0	£0	£0
Pedestrian Refuge	0	£0	£0	£0	£0
Posts	2	£6,300	£0	£0	£0
Pond	2	£3,900	£0	£0	£0
SAM 2	56	£210,497	£210,497	£108,677	£101,820
Pedestrian Step Off	1	£2,405	£0	£0	£0
Signs	1	£300	£0	£0	£0
Slabs	1	£6,076	£0	£0	£0
Surfacing	2	£12,520	£3,350	£1,675	£1,675
Traffic Calming	1	£12,335	£0	£0	£0
Trod	26	£194,172	£194,172	£97,086	£97,086
VAS	5	£30,720	£18,798	£9,399	£9,399
Verge Works	0	£0	£0	£0	£0
Village Gateways	21	£65,200	£65,200	£34,873	£30,327
Village Speed Signs	0	£0	£0	£0	£0
	157	£887,823	£735,321	£370,362	£364,959

4.4. Of the 157 bids, 3 were withdrawn, 18 were considered unsuitable and rejected (parishes and associated members being informed), leaving 136 viable bids. The total value of viable bids is £735,321, making the County Council contribution £370,362 which is within the available funding of £380,000. Consequently, all viable bids can be delivered.

4.5. The 136 viable bids, ranked in Member order, are listed in Appendix B. First time bidders are shaded yellow.

4.6. Our aspiration to use “Parish Partnership” funding to support delivery of a

£150,000 roundabout at Brick Kiln Crossroad, Little Plumstead was reported to Committee on 27th January 2017. However, as the Parish council have not yet secured the required CIL funding as their contribution, a bid has not yet been submitted.

- 4.7. We have positively promoted SAM2 bids over VAS. 56 bids for SAM2 were received (40 bids in 2016/17) amounting to £210,497, helping improve road safety. As noted in 2.2 above, the SafeCam partnership has again offered to support the 2017/18 Parish Partnership programme with £80,000 of funding.
- 4.8. 26 bids were for trods, which remains a popular improvement. Over the last four years, the implementation of trods has enabled 23 footway requests to be removed from the County Council's footway database.
- 4.9. 6 bids for "part-time advisory 20mph Speed Limits with flashing school warning lights outside Schools" were submitted (12 in 2016/17) amounting to £41,940, helping promote safety at schools.
- 4.10. No bids for "School Keep Clear carriageway markings outside schools" were submitted, this type of improvement having been included for the first time.
- 4.11. A report on extending Parish Partnerships to "unparished wards" was considered by EDT Committee on 8th July 2016. Committee approved recommendations, which included placing an upper limit on any individual Norfolk County Council contribution of £25,000. Officers engaged with Kings Lynn Borough Council, Norwich City Council, and Great Yarmouth Borough Council all of whom kindly agreed to support Parish Partnerships in principle and practice which includes offering 50% funding.
- 4.12. 2 bids for unparished wards were proposed by local members, neither of which are progressing at this stage. A proposed road crossing in West Lynn was not supported by the Kings Lynn Area Committee. Another road crossing improvement in Norwich proved unaffordable once estimates were produced.

5. Further development

- 5.1. "Parish partnerships" is also one of the Councils "vital signs" indicators, supporting community based working, with the following associated actions;

1. Assess/determine viable bids each January; report to EDT Committee and gain approval, followed by scheme delivery

2. Publicise known additional funding sources to parishes and seek additional funding sources where practicable To help improve our service to Parish/Town Councils, a section on the NCC [website](#) has been created and added to the most recent letter to bidders. This provides supporting information on parish partnerships including:

- How to apply
- Projects covered (ie Information on scheme types)
- Downloads (inc most recent letters to bidders)
- Funding (Information on potential funding sources that bidders could access, to complement or replace their contributions). This to be progressively expanded to

reflect further opportunities as identified by Officers including the corporate bidding team.

3. Number of bids from parishes who have not previously submitted bids with an associated “vital signs” target of “a stepped annual increase of 20 new bids per annum”. We contacted parishes that had not previously submitted bids, and actively encouraged them to do so. It is therefore pleasing to report that this target was exceeded, with 35 first time bids received.

5.2. It is recommended that Members:

1. Approve all bids listed in Appendix B for inclusion in the parish partnership programme for 2017/18

6. Evidence

6.1. The prioritisation process leading to the selection (or omission) of schemes for the parish partnership programme is described in Section 4 of this report.

7. Financial Implications

7.1. The allocation of funding to the Parish Partnerships programme was approved by members as part of setting the Highways capital programme, the bids from parishes recommended to be taken forward are within the available funding.

8. Issues, risks and innovation

8.1. No specific risks arising from the parish partnership programme.

Background Papers

1. [Report](#) on “Highways Capital Programme for 2016/17/18 and Transport Asset Management Plan” to ETD (Page 85 onwards)
2. [Report](#) on “Highway Parish Partnership Programme- unparished wards” to ETD (Page 77 onwards)

Officer Contact

If you have any questions about matters contained in this paper or want to see copies of any assessments, e.g. equality impact assessment, please get in touch with:

Officer name : Paul Donnachie

Tel No. : 01603 223097

Email address : paul.donnachie@norfolk.gov.uk



If you need this report in large print, audio, braille, alternative format or in a different language please contact 0344 800 8020 or 0344 800 8011 (textphone) and we will do our best to help.

APPENDIX A: Letter to Parish/Town Councils inviting bids (June 2016)

From the Chairman of the County Council's Environment, Development & Transport Committee

Dear Sir/Madam

Delivering local highway improvements in partnership with Town and Parish Councils

I am delighted to inform you that due to the success of working in partnership with Parish/Town Councils for the last five years the Parish Partnership Scheme Initiative will again be repeated in the financial year 2017/18. Further, supporting information can also now be accessed online (click here: <http://www.norfolk.gov.uk/parishpartnerships>). If you have difficulty accessing the internet, please call 01603 223097 and we can supply copies.

The County Council has again allocated £300,000 on a 50/50 basis to fund schemes put forward by Town and Parish Councils to deliver projects that are priorities for local communities.

To encourage bids from Town and Parish Councils with annual incomes below £2,000, we will again consider providing additional County Council funding (on a scheme by scheme basis). This will depend on the number and value of bids received, and evidence of income. We are also particularly keen to encourage and support first-time bids.

This letter provides more information on the process, invites you to submit bids, and explains how the County Council can support you in developing your ideas. The closing date will be 16 December 2016. If you need any advice in developing your ideas, especially around the practicalities and cost estimates, please consult your local Highway Engineers based at your local Area Office.

Once all bids have been received we will assess them and inform you of our decision in March 2017.

What sort of schemes would be acceptable?

- Small lengths of formal footway
- Trods (a simplified and low cost footway),
- Improved crossing facilities
- Street furniture (eg cycle racks/benches at bus stops)
- Improvements to Public Rights of Way.
- Flashing signs to tackle speeding. We would encourage you to consider Speed Awareness Mobile Signs (SAM2-which flash up the driver's actual speed) rather than fixed signs (VAS- which flash up the speed limit). The number of VAS in Norfolk has grown, and checks show that speed reduction benefits can be minimal. Whilst we will still consider bids for fixed VAS, we will need to be satisfied that they will be effective in reducing speed. We consider that SAM2 mobile signs, which are moved around on an agreed rota, are better at reducing speed ; **SAM2 can be jointly purchased with neighbouring Parishes, and would be owned and maintained by the Parish/Town Council**

- Part-time 20mph signs with flashing warning lights, outside schools. The County Council trialled these in 2008/9, and generally had a favourable community response, with some moderate reductions in average speeds during peak times. Whilst the County Council supports the aspiration to have part-time, 20mph speed limits outside each school in Norfolk, to do this would cost in the region of £3.75 million
- School Keep Clear carriageway markings outside schools. **This type of improvement is being included within the Parish Partnership Initiative for the first time.** Applications will be considered for either new school keep clear carriageway markings (which must be supported by the local school) or making existing school keep clear markings enforceable. However, in both cases and depending on the location, it may not always be practicable for Civil Parking Enforcement (CPE) Officers to undertake enforcement and this may happen only where it is operationally convenient to do so (i.e. when officers are in the area engaged on other enforcement work). To be enforceable, school keep clear markings need to comply with specific regulations and this could mean that existing school keep clear markings may need amending (your Highway Engineer can advise)

Schemes can be on or off the highway provided they are linked to the highway. If they are off highway the future responsibility for the maintenance will fall to the Parish or Town Council.

Schemes should be self-contained and not require other schemes or works to make them effective.

Schemes that support the Local Transport Plan objectives will have a higher priority for funding.

With the County Council's agreement Parishes can employ private contractors to deliver schemes. Any works on the highway would be subject to an agreed programme, inspection on completion, and the contractor having £10m public liability insurance.

What schemes will not be considered?

- Bids for minor traffic management changes such as speed limits or waiting restrictions will not qualify.
- Bids for installation of low-energy LED lighting in streetlights to help cut energy bills and maintenance.
- Last September we wrote to bidders, offering to also allow bids for carrying out additional pothole repairs on minor roads. That option did not prove to be popular and is now withdrawn.

What information should you include in your bid?

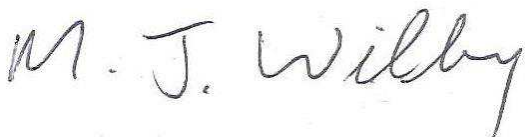
- Details of the scheme, its cost and your contribution.
- Who, and how many people will benefit.
- How it supports the objectives of the Local Transport Plan.
- Local support, particularly from your local Member, frontages and land owners.
- For 'off highway' schemes, your proposals for future maintenance.

Please find a simple bid application form attached to this letter. When assessing your bid we will consider the points above, but also look at:

- The potential for casualty reduction.
- Any ongoing maintenance costs for the County Council.

Your bids should be emailed to the Capital Programme Manager, Paul Donnachie (email: paul.donnachie@norfolk.gov.uk) or posted for his attention to the above address. If you need further information on the bid process please contact Paul, by email or by phoning 01603 223097. For advice on the scheme practicalities and/or likely costs, please contact your local Highway Engineer.

Yours sincerely

A handwritten signature in dark ink, reading 'M. J. Wilby'. The signature is written in a cursive style with a large 'M' and 'W'.

Martin Wilby
Chairman of Environment, Development and Transport Committee

APPENDIX B: Individual viable bids, ranked in Member order

	Parish	Member	Scheme Type	Value of Works	Overall Ranking Score (criteria as per letter to Parishes in Appendix A)
1	Felthorpe	Adams, A	Village Gateways	£10,133	2.37
2	Terrington St Clements	Agnew, S	Crossing Point	£3,000	N/A
3	Tilney All Saints	Agnew, S	Village Gateways	£1,348	17.8
4	West Walton	Agnew, S	SAM2	£3,578	22.36
5	Hopton On Sea	Aldred, C	Village Gateways	£5,861	4.09
6	Banham	Askew, S	SAM2	£6,300	12.7
7	Garboldisham	Askew, S	SAM2	£6,334	8.42
8	Kenninghall	Askew, S	SAM2	£4,856	16.47
9	Quidenham	Askew, S	SAM2	£6,688	11.96
10	South Lopham	Askew, S	SAM2	£3,500	22.86
11	Beckham East and West	Baker, M	Village Gateways	£7,380	3.25
12	High Kelling	Baker, M	Village Gateways	£2,956	8.12
13	Burnham Overy	Bird, R	Trod	£2,350	89.36
14	Hunstanton	Bird, R	Bus Shelter	£2,152	51.12
15	Hunstanton	Bird, R	VAS	£6,500	12.31
16	North Creake	Bird, R	SAM2	£3,328	24.04
17	Old Hunstanton	Bird, R	Village Gateways	£2,460	9.76
18	Ringstead	Bird, R	Village Gateways	£2,873	8.35
19	Ringstead	Bird, R	SAM2	£3,050	26.23
20	Lyng	Borrett, B	Trod	£2,350	89.36
21	Mattishall	Borrett, B	SAM2	£3,150	25.4
22	North Elmham	Borrett, B	Trod	£2,683	78.26
23	Swanton Morley	Borrett, B	Kerbing	£9,476	6.96
24	Swanton Morley	Borrett, B	SAM2	£6,200	12.9
25	Carbrooke	Bowes, C	Hardstanding	£500	132

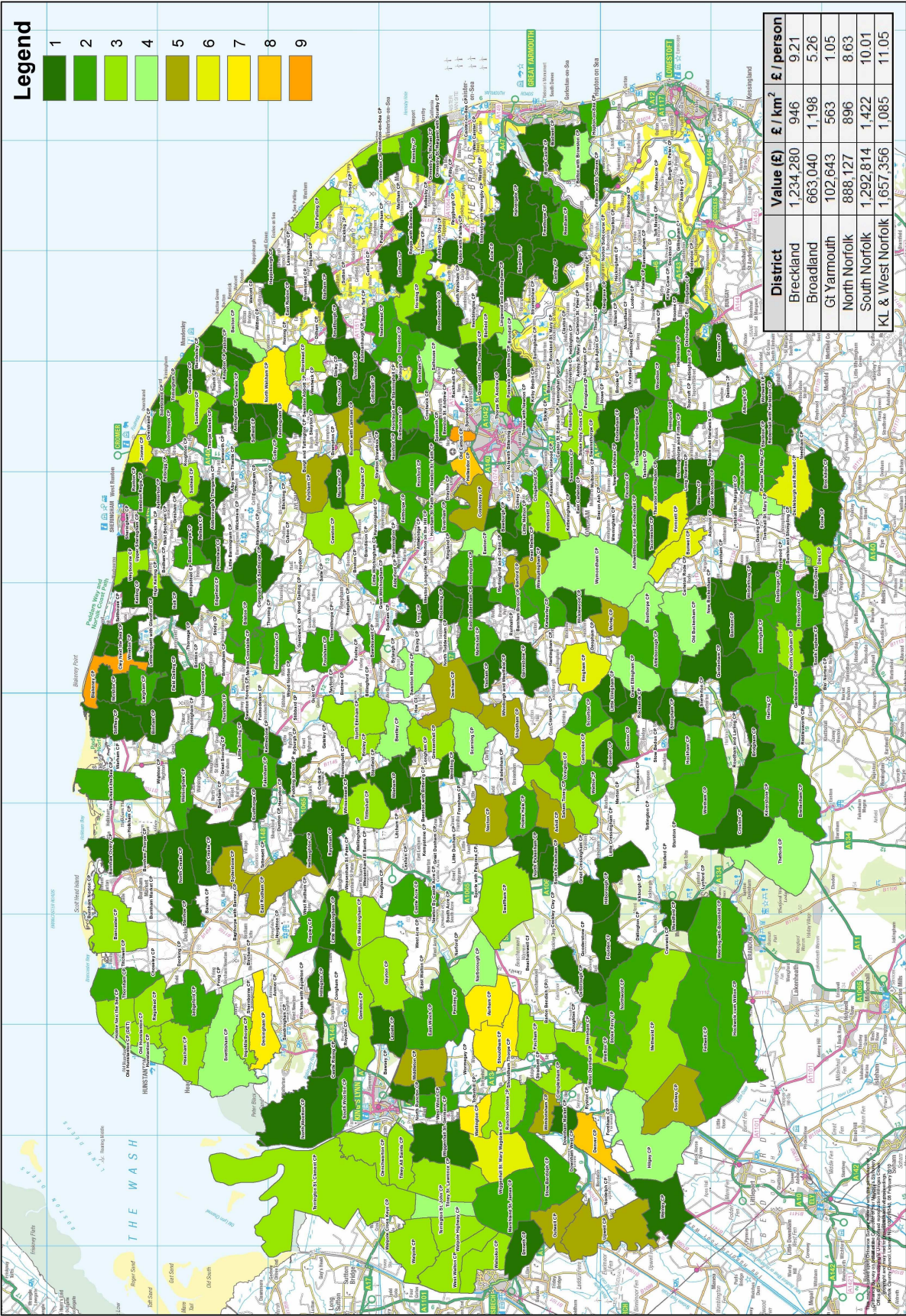
26	Carbrooke	Bowes, C	Bus Shelter	£5,085	21.63
27	Caston	Bowes, C	Village Gateways	£2,786	8.62
28	Griston	Bowes, C	Village Gateways	£5,550	4.32
29	East Ruston	Bradnock, A	Trod	£4,860	43.21
30	Horning	Bradnock, A	Trod	£570	368.42
31	Attleborough	Byrne, A	SAM2	£6,100	13.11
32	Besthorpe	Byrne, A	SAM2	£4,325	18.5
33	Repps with Bastwick	Carttiss, M	Trod	£12,370	16.98
34	East Rudham (for West as well)	Chenery, M	SAM2	£6,945	11.52
35	Heacham	Chenery, M	Hardstanding	£1,239	53.27
36	Stanhoe	Chenery, M	SAM2	£3,378	23.68
37	Syderstone	Chenery, M	Trod	£3,662	57.35
38	Hemsby	Childs, J	20mph Wig Wags	£3,682	21.73
39	Somerton	Childs, J	SAM2	£3,281	16.26
40	Marham	Coke, R	Trod	£13,500	15.56
41	Middleton	Coke, R	SAM2	£3,050	26.23
42	North Runcton	Coke, R	SAM2	£3,556	22.5
43	Shouldham	Coke, R	Trod	£6,200	33.87
44	Thorpe Market	Cox, H	SAM2	£3,328	24.04
45	Thetford Town Council	Crawford, D	Footpath	£10,972	19.14
46	Thetford Town Council	Crawford, D	Footpath	£3,837	54.73
47	Barford/ Wramplingham	Dewsbury, M	Fencing	£760	78.95
48	Barnham Broom	Dewsbury, M	SAM2	£3,360	23.81
49	Easton	Dewsbury, M	SAM2	£3,517	22.75
50	Hingham	Dewsbury, M	Footpath	£9,000	23.33
51	Kimberley and Carleton Forehoe Parish Council	Dewsbury, M	Village Gateways	£5,000	3.2
52	Morley	Dewsbury, M	20mph Wig Wags	£6,304	12.69

53	Smallburgh	Dixon, N	VAS	£6,149	13.01
54	Tunstead	Dixon, N	SAM2	£3,281	24.38
55	Dersingham	Dobson, J	Crossing Point	£50,000	2.2
56	Dersingham	Dobson, J	Hardstanding	£5,964	11.07
57	Gt Massingham	Dobson, J	Village Gateways	£2,802	8.57
58	Ingoldisthorpe	Dobson, J	Village Gateways	£3,260	7.36
59	Ingoldisthorpe	Dobson, J	Trod	£2,611	80.43
60	Little Massingham	Dobson, J	SAM2	£3,389	15.74
61	Snettisham	Dobson, J	Trod	£8,000	26.25
62	Costessey	East, T	20mph Wig Wags	£2,080	38.46
63	Flordon	Foulger, C	SAM2	£3,228	24.78
64	Newton Flotman	Foulger, C	Village Gateways	£600	40
65	Wymondham	Foulger, C	SAM2	£3,300	24.24
66	Upton with Fishley	Garrod, T	SAM2	£3,250	24.62
67	Woodbastwick	Garrod, T	SAM2	£3,700	21.62
68	Bradwell	Grey, A	Trod	£18,473	11.37
69	Buxton with Lamas	Harrison, D	Trod	£3,200	65.63
70	Marsham	Harrison, D	SAM2	£4,290	18.65
71	Welney	Humphrey, H	SAM2	£2,800	28.57
72	Halvergate	Iles, B	SAM2	£3,684	21.72
73	Great Ellingham	Jordan, C	SAM2	£4,073	19.64
74	Great Ellingham	Jordan, C	Trod	£10,000	21
75	Scoulton	Jordan, C	Village Gateways	£2,000	12
76	Cawston	Joyce, J	SAM2	£3,388	23.61
77	Foulsham	Joyce, J	SAM2	£3,500	22.86
78	Swannington	Joyce, J	Hardstanding	£2,500	26.4
79	Clenchwarton	Kemp, A	SAM2	£3,200	25
80	Gressenhall	Kiddle-Morris, M	SAM2	£3,281	24.38
81	Necton	Kiddle-Morris, M	Bus Shelter	£13,589	8.09

82	Necton	Kiddle-Morris, M	Trod	£20,000	10.5
83	North Wootton	Law , J	20mph Wig Wags	£12,606	6.35
84	South Wootton	Law , J	Bus Shelter	£12,453	8.83
85	Castle Rising	Law, J	Village Gateways	£4,092	3.91
86	Old Catton	Leggett, J	Bus Shelter	£1,555	70.74
87	Old Catton	Leggett, J	Bus Shelter	£3,620	30.39
88	Fincham	Long, B	SAM2	£3,834	20.87
89	Stow Bardolph	Long, B	SAM2	£3,289	24.32
90	Terrington St John	Long, B	Trod	£19,900	10.55
91	Tilney St Lawrence	Long, B	Village Gateways	£2,588	9.27
92	Watlington	Long, B	Trod	£7,500	28
93	Wiggenhall St Mary Magdalen	Long, B	Bus Shelter	£4,300	25.58
94	Wiggenhall St Mary Magdalen	Long, B	Trod	£7,500	28
95	Wimbotsham	Long, B	Trod	£10,800	19.44
96	Wiggenhall St Mary Magdalen	Long, B	20mph Wig Wags	£3,600	22.22
97	Great and Little Plumstead	Mackie, I	SAM2	£3,578	22.36
98	Weeting	Monson, I	Trod	£3,680	57.07
99	Ashill	Monson, I	Trod	£8,037	26.13
100	Hilborough	Monson, I	SAM2	£3,281	24.38
101	Bacton	Northam, W	Drainage	£20,000	0.6
102	Gimingham	Northam, W	SAM2	£3,234	24.74
103	Mundesley	Northam, W	SAM2	£3,100	25.81
104	Paston	Northam, W	Trod	£3,200	65.63
105	Sidestrand	Northam, W	SAM2	£3,817	13.97
106	Brundall	Proctor, A J	Bus Shelter	£12,896	8.53
107	Postwick and Witton	Proctor, A J	SAM2	£3,328	24.04
108	Hindolveston	Ramsbotham, D J	SAM2	£3,917	20.42
109	Thursford	Ramsbotham, D J	Village Gateways	£500	48
110	Dereham	Richmond, W	Trod	£4,000	52.5

111	Scarning	Richmond, W	Bus Shelter	£16,000	6.88
112	Scarning	Richmond, W	Trod	£11,000	19.09
113	Frettenham	Roper, D	SAM2	£3,648	21.93
114	Hevingham	Roper, D	SAM2	£3,281	24.38
115	Trowse	Smith, R	SAM2	£3,300	24.24
116	Narborough	Smyth, P	Bus Shelter	£2,935	37.48
117	Tivetshall	Spratt , B	Bus Shelter	£3,250	33.85
118	Tivetshall	Spratt , B	Surfacing	£3,350	1.19
119	Ellingham	Stone, M	Footpath	£2,530	83
120	Hales & Heckingham	Stone, M	Village Gateways	£2,612	9.19
121	Hedenham	Stone, M	SAM2	£3,289	24.32
122	Hedenham	Stone, M	VAS	£6,149	13.01
123	Wortwell	Stone, M	Bus Shelter	£2,900	37.93
124	Hilgay	Storey, M	SAM2	£3,150	25.4
125	Hilgay	Storey, M	20mph Wig Wags	£13,668	5.85
126	Methwold	Storey, M	Village Gateways	£400	60
127	Methwold	Storey, M	SAM2	£4,060	19.7
128	Southery	Storey, M	Footpath	£850	247.06
129	Blakeney	Strong, Dr M	Trod	£3,500	60
130	Wells Next The Sea	Strong, Dr M	SAM2	£6,070	13.18
131	Hempnall	Thomas, A	SAM2	£3,050	26.23
132	Tharston and Hapton	Thomas, A	SAM2	£3,050	26.23
133	Felmingham	Timewell, J W	SAM2	£3,227	16.53
134	Swanton Abbott	Timewell, J W	SAM2	£3,467	23.07
135	Worstead	Timewell, J W	Trod	£4,226	49.69
136	Bawburgh	Virgo, J	SAM2	£3,339	23.96
				£735,321	

APPENDIX C: Cumulative bids by Parish (February 2017)



APPENDIX D: Cumulative bids and bid value by District (February 2017)

