

# Environment, Development and Transport Committee

Item No.

<b>Report title:</b>	<b>Highway Parish Partnership Schemes 2018/19</b>
<b>Date of meeting:</b>	<b>16 March 2018</b>
<b>Responsible Chief Officer:</b>	<b>Tom McCabe – Executive Director, Community and Environmental Services</b>
<b>Strategic impact</b> The Parish Partnership programme delivers small highway improvements which are considered a priority by local communities and support Local Transport Plan (LTP) objectives. It is also covered by a “vital signs” performance indicator.  In March 2017, EDT Committee agreed to continue the programme using £300,000 of the highway improvements budget to fund up to 50% of each bid, with consideration of increased contributions for parish councils with incomes below £2,000. Additionally on 19 January 2018 the committee agreed to boost this provisional by £25,000 for the next 4-years utilising some of the additional £20m investment from our members in highways.	

## Executive summary

This report sets out the proposed parish partnership programme for 2018/19 following analysis and review of the applications submitted.

### Recommendations

EDT Committee is asked to:

- 1. Approve all bids listed in Appendix B for inclusion in the Parish Partnership Programme for 2018/19.**

## 1. Background

- 1.1. The Parish Partnership Scheme began in September 2011, when Parish and Town Councils were invited to submit bids for local highway improvements, with the County Council initially funding up to 50% of bid costs. Funding is therefore targeted to meet needs identified at a local level and helps us to support and promote our role in enabling communities.
- 1.2. The programme has been well received by Parish/Town Councils and members and feedback has been very positive from communities. Key features are that it:
  - Delivers local priorities identified by local people
  - Draws in additional funding for small scale highway improvements
  - Helps communities have more of “a say”.
- 1.3. The most popular bids have been for:
  - Trods - a simplified, lower cost alternative to footways (often constructed

using recycled road surface material)

- Vehicle Activated Signs (VAS) which flash up warnings to drivers. Subsequently owned/maintained by the County Council
- SAM2 (mobile VAS units which flash vehicle speed as a reminder to the driver). Subsequently owned/maintained by the Parish Council

## 2. Funding

- 2.1. The Parish Partnership Programme was previously renewed on an annual basis. In March 2017 EDT Committee agreed to use £300,000 of the highway improvements budget, plus an additional £25,000 agreed by committee in January to fund up to 50% of each bid, with consideration of increased contributions for parish councils with incomes below £2,000.
- 2.2. The Norfolk Safety Camera Partnership (SafeCam) has again agreed to contribute £86,000 towards SAM2 bids in 2018/19. This welcome support boosts the total available County Council funding to £411,000 and emphasises the important role that the Parish Partnership Programme can have in casualty reduction initiatives.
- 2.3. Invitation letters for 2018/19 letters for bids were sent out in June 2017 with a closing date of 11 December 2017 (Appendix A), to giving bidders good time to develop their proposals.

## 3. Bids submitted

- 3.1 144 bids were received for 2018/19. A short deadline extension was allowed for 7 bids, which are included in the 144.
- 3.2 The number of bids received over the past six years by Parish is mapped in Appendix C, showing a reasonable distribution across Norfolk
- 3.3 The number and value of bids submitted over the past six years by District is shown in Appendix D. This indicates a reasonable spread of bids in relation to the size of each District, although the number (22) and value (£116,593) of bids within the Great Yarmouth Borough Council area continues to be comparatively low.
- 3.4 We received 3 bids from Parishes with precepts (information supplied by the Parish Councils with their bids) below £2,000, summarised in the table in 3.5 below. Bid values fall within a narrow range of £550 to £3,100. Bidders are seeking NCC support of between 50% and 75%.

3.5

Parish	District	Prec ept	Scheme type	Comments
Bintree	Breckland	£548	Bus Shelter	Parish seeking £411 towards a £548 scheme
Haveringland	Broadland	£450	Signs	Parish seeking £1,470 towards a £1,960 scheme
Little Cressingham	Breckland	£534	SAM2	Parish seeking £2,725 towards a £3,100 scheme

- 3.6 Since 2017/18 the following approach has now been adopted to support bidders with annual income below £2,000:
- 75% County Council contribution
  - £5,000 maximum bid value
  - Offer available only once to any bidder.
- 3.7 This is considered to be an offer which is both reasonable to low-income bidders whilst still being equitable towards other bidders with moderate incomes. It will help encourage first-time bidders who may, if the scheme continues, subsequently wish to consider the alternative funding sources outlined on the NCC website. The total NCC contribution toward these 3 bids would be £4,606 (compared with £2,804 had our contribution been 50%) which is also considered reasonable, and still allowing us to support all viable bids.
- 3.8 There are 3 other bidders who did not supply any precept information with their bids, but in all cases their bids are clearly based on a 50% contribution and with no additional support from NCC requested. It has therefore been assumed they have sufficient resources and have consequently been excluded from consideration of additional NCC support.

## 4. Assessment of Bids

- 4.1. Bids have been assessed through a combination of the following factors:

- Contribution to LTP objectives
- Outcome for the local community
- Value for money

This resulted in a score which enabled ranking of bids in priority order.

- 4.2. 144 bids were submitted and assessed, shown in the following table along with the value of these bids considered viable.

4.3.

Scheme Types	No	£ Original bids	£ Assessed bids	£ NCC Contribution	£ Parish Contribution
20mph Wig Wags	4	£18,187	£18,187	£9,093.40	£9,093.40
Access	3	£2,490	£2,490	£1,245.00	£1,245.00
Bus Shelter	16	£162,058	£162,058	£81,302.81	£80,745.81
Crossing Point	1	£2,360	£2,360	£1,180.00	£1,180.00
Guard Rail	1	£500	£500	£250.00	£250.00
Hardstanding	1	£1,000	£1,000	£500.00	£500.00
Junction Improvement	1	£23,025	£23,025	£11,512.50	£11,512.50
Kerbing	4	£13,200	£13,200	£6,600.00	£6,600.00
Kissing Gate	1	£350	£350	£175.00	£175.00
Lining	2	£425	£425	£212.50	£212.50
Passing Bays	1	£7,800	£7,800	£3,900.00	£3,900.00
Posts	1	£12,151	£0	£0.00	£0.00
SAM 2	49	£184,085	£184,085	£92,417.58	£91,667.58
Signs	11	£20,657	£14,774	£7,877.00	£6,897.00
Steps	1	£5,500	£5,500	£2,750.00	£2,750.00
Surfacing	1	£2,500	£2,500	£1,250.00	£1,250.00

Traffic Calming	3	£18,150	£17,000	£8,500.00	£8,500.00
Traffic Mirrors	1	£500	£0	£0.00	£0.00
Trod	24	£268,618	£268,618	£134,309.10	£134,309.10
VAS	4	£50,325	£39,590	£19,795.00	£19,795.00
Verge Works	2	£12,506	£12,506	£6,253.00	£6,253.00
Village Gateways	8	£24,310	£23,860	£11,930.24	£11,930.24
Village Signs	4	£2,544	£2,544	£1,272.00	£1,272.00
	<b>144</b>	<b>£833,242</b>	<b>£802,372</b>	<b>£403,825</b>	<b>£401,547</b>

- 4.4. Of the 144 bids, 10 were considered unsuitable and rejected (parishes and associated members being informed), leaving 134 viable bids. The total value of viable bids is £802,372, making the County Council contribution £403,825. The available funding of £411,000. Consequently, all viable bids can be delivered.
- 4.5. The 134 viable bids, ranked in Member order, are listed in Appendix B. First time bidders are shaded yellow.
- 4.6. We have positively promoted SAM2 bids over VAS. 49 bids for SAM2 were received (57 bids in 2017/18) amounting to £184,085, helping improve road safety. As noted in 2.2 above, the SafeCam partnership has again offered to support the 2018/19 Parish Partnership programme with £86,000 of funding.
- 4.7. 24 bids were for trods, which remains a popular improvement. Over the last four years, the implementation of trods has enabled 26 footway requests to be removed from the County Council's footway database.
- 4.8. 4 bids for "part-time advisory 20mph Speed Limits with flashing school warning lights outside Schools" were submitted (7 in 2017/18) amounting to £18,187, helping promote safety at schools.
- 4.9. No bids for "School Keep Clear carriageway markings outside schools" were submitted.
- 4.10. Officers engaged with Kings Lynn Borough Council, Norwich City Council, and Great Yarmouth Borough Council all of whom kindly agreed to support Parish Partnerships in principle and practice which includes offering 50% funding. 2 bids have been received one to be supported by Great Yarmouth Borough Council and one to be supported by Kings Lynn Borough Council.

## 5. Further development

- 5.1. "Parish partnerships" is also one of the Councils "vital signs" indicators, supporting community based working, with the following associated actions;
1. Assess/determine viable bids each January; report to EDT Committee and gain approval, followed by scheme delivery
  2. Publicise known additional funding sources to parishes and seek additional funding sources where practicable To help improve our service to Parish/Town Councils, a section on the NCC [website](#) has been created and added to the most recent letter to bidders. This provides supporting information on parish partnerships including:

- How to apply

- Projects covered (i.e. Information on scheme types)
- Downloads (inc most recent letters to bidders)
- Funding (Information on potential funding sources that bidders could access, to complement or replace their contributions). This to be progressively expanded to reflect further opportunities as identified by Officers including the corporate bidding team.

3. Number of bids from parishes who have not previously submitted bids with an associated “vital signs” target of “a stepped annual increase of 20 new bids per annum”. It is therefore pleasing to report that this target was exceeded, with 32 first time bids received.

## **6. Evidence**

- 6.1. The prioritisation process leading to the selection (or omission) of schemes for the parish partnership programme is described in Section 4 of this report.

## **7. Financial Implications**

- 7.1. The allocation of funding to the Parish Partnerships programme was approved by members as part of setting the Highways capital programme, the bids from parishes recommended to be taken forward are within the available funding.

## **8. Issues, risks and innovation**

- 8.1. No specific risks arising from the parish partnership programme.

## **9. Background papers**

- 9.1. [Report](#) on “Highways Capital Programme for 2018/19/20 and Transport Asset Management Plan” to EDT 19 January 2018 (Page 183 onwards)
- [Report](#) on “Highway Parish Partnership Programme- unparished wards” to EDT 8 July 2016, item 17
- [Report](#) on “Highway Parish Partnership Schemes 2017-18” to ETD 17 March 2017, item 9

## **Officer Contact**

If you have any questions about matters contained in this paper or want to see copies of any assessments, e.g. equality impact assessment, please get in touch with:

**Officer name :** Kevin Townly

**Tel No. :** 01603 222627

**Email address :** [kevin.townly@norfolk.gov.uk](mailto:kevin.townly@norfolk.gov.uk)



If you need this report in large print, audio, braille, alternative format or in a different language please contact 0344 800 8020 or 0344 800 8011 (textphone) and we will do our best to help.

## **APPENDIX A: Letter to Parish/Town Councils inviting bids (June 2017)**

### **From the Chairman of the County Council's Environment, Development & Transport Committee**

Dear Sir/Madam

#### **Delivering local highway improvements in partnership with Town and Parish Councils**

I am delighted to inform you that due to the success of working in partnership with Parish/Town Councils for the last six years the Parish Partnership Scheme Initiative will again be repeated in the financial year 2018/19. Further supporting information, including possible funding sources for your share of the bid, is available on our website (click on [this link](#)).

The County Council has again allocated £300,000 on a 50/50 basis to fund schemes put forward by Town and Parish Councils to deliver projects that are priorities for local communities. We are particularly keen to encourage and support first-time bids.

This letter provides more information on the process, invites you to submit bids, and explains how the County Council can support you in developing your ideas. The closing date will be 11 December 2017. If you need any advice in developing your ideas, especially around the practicalities and cost estimates, please consult your local Highway Engineers based at your local Area Office.

Once all bids have been received we will assess them and inform you of our decision in March 2018.

To encourage bids from Town and Parish Councils with annual incomes (precepts plus any another income) below £2,000, we are offering the following support;

- 75% County Council contribution
- £5,000 maximum bid value
- Offer available only once to any bidder

We will also accept bids from unparished County Council wards. Such wards can always opt to become a formal parish council, but otherwise we are offering support on the basis that the ward raises the required 50% funding. Kings Lynn Borough Council, Great Yarmouth Borough Council and Norwich City Council have kindly indicated their willingness to consider proposed schemes and potential funding for them. Further details are in the relevant committee report on our website (click on [this link](#)).

#### **What sort of schemes would be acceptable?**

- Small lengths of formal footway
- Trods (a simplified and low cost footway),
- Improved crossing facilities
- Improvements to Public Rights of Way.

- Flashing signs to tackle speeding. We would encourage you to consider Speed Awareness Mobile Signs (SAM2) - which flash up the driver's actual speed rather than fixed signs (VAS) - which flash up the speed limit. The number of VAS in Norfolk has grown, and checks show that speed reduction benefits can be minimal. Whilst we will still consider bids for fixed VAS, we will need to be satisfied that they will be effective in reducing speed. We consider that SAM2 mobile signs, which are moved around on an agreed rota, are better at reducing speed; **SAM2 can be jointly purchased with neighbouring Parishes, and would be owned and maintained by the Parish/Town Council**
- Part-time 20mph signs with flashing warning lights, outside schools. The County Council trialed these in 2008/9, and generally had a favourable community response, with some moderate reductions in average speeds during peak times. Whilst the County Council supports the aspiration to have part-time 20mph speed limits outside each school in Norfolk, to do this would cost in the region of £3.75 million pounds

School Keep Clear carriageway markings outside schools. **This type of improvement is being included within the Parish Partnership Initiative for the first time.** Applications will be considered for either new school keep clear carriageway markings (which must be supported by the local school) or making existing school keep clear markings enforceable. However, in both cases and depending on the location, it may not always be practicable for Civil Parking Enforcement (CPE) Officers to undertake enforcement and this may happen only where it is operationally convenient to do so (i.e. when officers are in the area engaged on other enforcement work). To be enforceable, school keep clear markings need to comply with specific regulations and this could mean that existing school keep clear markings may need amending (your Highway Engineer can advise)

New Bus Shelter. A copy of Norfolk County Councils guidance for new bus shelters is available on our web site (click on [this link](#)). **Any new shelter would be owned and maintained by the Parish/Town Council.**

Schemes can be within or off the highway provided they are linked to the highway. If they are off highway the future responsibility for the maintenance will fall to the Parish or Town Council.

Schemes should be self-contained and not require other schemes or works to make them effective.

Schemes that support the Local Transport Plan (LTP) objectives will have a higher priority for funding. The LTP can be found on our website (click on [this link](#)).

With the County Council's agreement Parishes can employ private contractors to deliver schemes. Any works on the highway would be subject to an agreed programme, inspection on completion, and the contractor having £10m public liability insurance.

#### **What schemes will not be considered?**

- Bids for minor traffic management changes such as speed limits or waiting restrictions will not qualify.

- Bids for installation of low-energy LED lighting in streetlights to help cut energy bills and maintenance.

**What information should you include in your bid?**

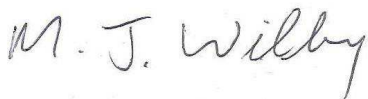
- Details of the scheme, its cost and your contribution.
- Who, and how many people will benefit.
- How it supports the objectives of the Local Transport Plan.
- Local support, particularly from your local Member, frontagers and land owners.
- For 'off highway' schemes, your proposals for future maintenance.

Please find a simple bid application form attached to this letter. When assessing your bid we will consider the points above, but also:

- The potential for casualty reduction.
- Any ongoing maintenance costs for the County Council.

Your bids should be emailed to [ppschemas@norfolk.gov.uk](mailto:ppschemas@norfolk.gov.uk) (or posted for the attention of the Capital Programme Manager, Paul Donnachie, at the above address). If you need further information on the bid process please contact Paul, by email or by phoning 01603 223097. For advice on the scheme practicalities and/or likely costs, please contact your local Highway Engineer.

Yours sincerely

A handwritten signature in dark ink, appearing to read 'M. J. Wilby', written in a cursive style.

Martin Wilby  
Chairman of Environment, Development and Transport Committee



**APPENDIX B: Individual viable bids, in Member order**

	Parish	Member	Scheme Type	Value of Works	Overall Ranking Score (criteria as per letter to Parishes in Appendix A)
1	Felthorpe	Adams A	SAM2	£6,900	11.59
2	Felbrigg	Adams T	SAM2	£3,477	23.01
3	Southrepps	Adams T	SAM2	£3,189	25.09
4	Bodham	Aquarone S	Village Gateways	£3,765	6.37
5	Briston	Aquarone S	Village Signs	£544	66.18
6	Fulmodeston	Aquarone S	SAM2	£3,556	22.50
7	Harling	Askew S	SAM2	£3,539	22.61
8	North Lopham	Askew S	Trod	£4,214	49.83
9	Bawburgh	Bills D	SAM2	£2,900	27.59
10	Bintree	Borrett B	Bus Shelter	£548	133.82
11	Foxley	Borrett B	Bus Shelter	£9,350	11.76
12	North Elmham	Borrett B	Traffic Calming	£8,000	12.50
13	Swanton Morley	Borrett B	Kerbing	£5,400	12.22
14	Carbrooke	Bowes C	SAM2	£3,100	25.81
15	Ovington	Bowes C	Trod	£11,000	19.09
16	Thetford	Brame R	Access	£2,215	58.69
17	Thetford	Brame R	SAM2	£3,150	25.40
18	Thetford	Brame R	Access	£3,000	43.3
19	Cley	Bütikofer S	Verge Works	£7,408	3.24
20	Runton	Bütikofer S	SAM2	£3,606	22.19
21	Upper Sheringham	Bütikofer S	SAM2	£3,517	22.75
22	Weybourne	Bütikofer S	Village Gateways	£2,000	12.00
23	East Rudham	Chenery of Horsburgh M	Kerbing	£2,800	15.71
24	Heacham	Chenery of Horsburgh M	SAM2	£3,417	23.41
25	South Creak	Chenery of Horsburgh M	SAM2	£3,050	26.23

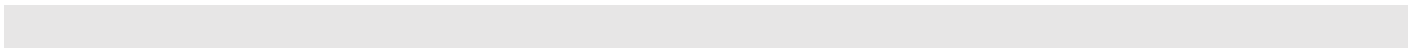
	Parish	Member	Scheme Type	Value of Works	Overall Ranking Score (criteria as per letter to Parishes in Appendix A)
26	Syderstone	Chenery of Horsbrugh M	Trod	£711	295.36
27	Great Massingham	Dark S	SAM2	£3,417	23.41
28	Snettisham	Dark S	Trod	£6,000	35.00
29	Barnham Broom	Dewsbury M	SAM2	£3,050	26.23
30	Easton	Dewsbury M	Bus Shelter	£3,432	32.05
31	Hingham	Dewsbury M	Trod	£14,800	14.19
32	Marlingford	Dewsbury M	SAM2	£3,916	20.43
33	Morley	Dewsbury M	Trod	£3,050	68.85
34	Croxton	Eagle F	SAM2	£3,328	24.04
35	Great Cressingham	Eagle F	SAM2	£6,500	5.54
36	Holme Hale	Eagle F	Trod	£8,600	24.42
37	Little Cressingham	Eagle F	SAM2	£3,100	14.68
38	Mundford	Eagle F	Village Gateways	£5,421	2.95
39	Stow Bedon and Breckles	Eagle F	SAM2	£3,564	22.45
40	Grimston	Eyre S	Trod	£400	525.00
41	South Wootton	Eyre S	Bus Shelter	£18,451	5.96
42	Swardeston	Foulger C	SAM2	£3,250	24.62
43	Wreningham	Foulger C	SAM2	£3,350	23.88
44	Coltishall	Garrod T	VAS	£28,090	2.85
45	Salhouse	Garrod T	Bus Shelter	£4,000	27.50
46	Salhouse	Garrod T	Trod	£33,000	6.36
47	Salhouse	Garrod T	Trod	£19,500	10.77
48	South Walsham	Garrod T	SAM2	£3,428	23.34
49	Woodbastwick	Garrod T	Signs	£1,750	20.57
50	Woodbastwick	Garrod T	Signs	£750	48.00
51	Belton with Browston	Grant A	Steps	£5,500	19.64

	Parish	Member	Scheme Type	Value of Works	Overall Ranking Score (criteria as per letter to Parishes in Appendix A)
52	Hellesdon	Gurney S	Bus Shelter	£17,000	6.47
53	Hellesdon	Gurney S	Hardstanding	£1,000	66.00
54	Brampton	Harrison D	Passing Bays	£7,800	7.7
55	Marsham	Harrison D	20mph Wig Wags	£3,618	22.11
56	Marshland St James	Humphrey H	Village Gateways	£3,075	7.81
57	Upwell	Humphrey H	Bus Shelter	£3,750	29.33
58	Upwell	Humphrey H	Signs	£7,180	5.01
59	Upwell	Humphrey H	SAM2	£3,050	26.23
60	Welney	Humphrey H	Trod	£28,000	7.50
61	Acle	Iles B	VAS	£11,500	6.96
62	Lingwood and Burlingham	Iles B	Bus Shelter	£3,912	28.12
63	Reedham	Iles B	SAM2	£3,478	23.00
64	Brancaster	Jamieson A	Bus Shelter	£33,000	2.22
65	Burnham Overy	Jamieson A	SAM2	£3,428	23.34
66	Burnham Thorpe	Jamieson A	SAM2	£3,757	21.29
67	North Creake	Jamieson A	SAM2	£3,139	25.49
68	Cranworth	Jordan C	Kissing Gate	£350	85.71
69	Hardingham	Jordan C	Village Signs	£450	80.00
70	Little Ellingham	Jordan C	SAM2	£3,328	24.04
71	Scoulton	Jordan C	Bus Shelter	£2,540	43.31
72	Clenwarton	Kemp A	Village Gateways	£3,000	8.00
73	Kings Lynn	Kemp A	SAM2	£7,000	11.43
74	Beetley	Kiddle-Morris M	Trod	£3,000	70.00
75	Beetley	Kiddle-Morris M	Bus Shelter	£4,555	24.15
76	Brisley	Kiddle-Morris M	Trod	£2,460	85.37
77	Fransham	Kiddle-Morris M	Trod	£2,800	75.00

	Parish	Member	Scheme Type	Value of Works	Overall Ranking Score (criteria as per letter to Parishes in Appendix A)
78	Fransham	Kiddle-Morris M	Bus Shelter	£28,240	6.7
79	Necton	Kiddle-Morris M	Trod	£14,000	15.00
80	Necton	Kiddle-Morris M	Trod	£14,000	15.00
81	Tittleshall	Kiddle-Morris M	Village Gateways	£2,600	9.23
82	Tivetshall	Kiddle-Morris M	SAM2	£3,549	22.54
83	Barton Bendish	Long B	Trod	£2,600	80.77
84	Runcton Holme	Long B	SAM2	£6,149	13.01
85	Runcton Holme	Long B	Trod	£7,900	26.58
86	Terrington St John	Long B	Trod	£29,000	7.24
87	Watlington	Long B	SAM2	£3,500	22.86
88	Wiggenhall St Mary Magdalen	Long B	SAM2	£3,417	23.41
89	Wiggenhall St Mary Magdalen	Long B	Trod	£8,583	24.47
90	Wimbotsham	Long B	Kerbing	£3,100	21.29
91	Marham	Middleton G	Trod	£31,000	6.77
92	West Acre	Middleton G	SAM2	£3,317	24.12
93	Sheringham	Oliver J	Bus Shelter	£4,719	23.31
94	Sheringham	Oliver J	Signs	£1,000	36.00
95	Sheringham	Oliver J	Crossing Point	£2,360	46.61
96	Cawston	Peck G	Kerbing	£1,900	34.74
97	Great Witchingham	Peck G	Traffic Calming	£9,000	11.11
98	Great Witchingham	Peck G	Village Gateways	£4,000	6.00
99	Haveringland	Peck G	Signs	£1,960	12.24
100	Ludham	Price R	Guard Rail	£500	216.00
101	Blofield	Proctor A	Trod	£14,000	15.00
102	Frettenham	Roper D	Village Signs	£800	45.00
103	Hainford	Roper D	Signs	£450	80.00

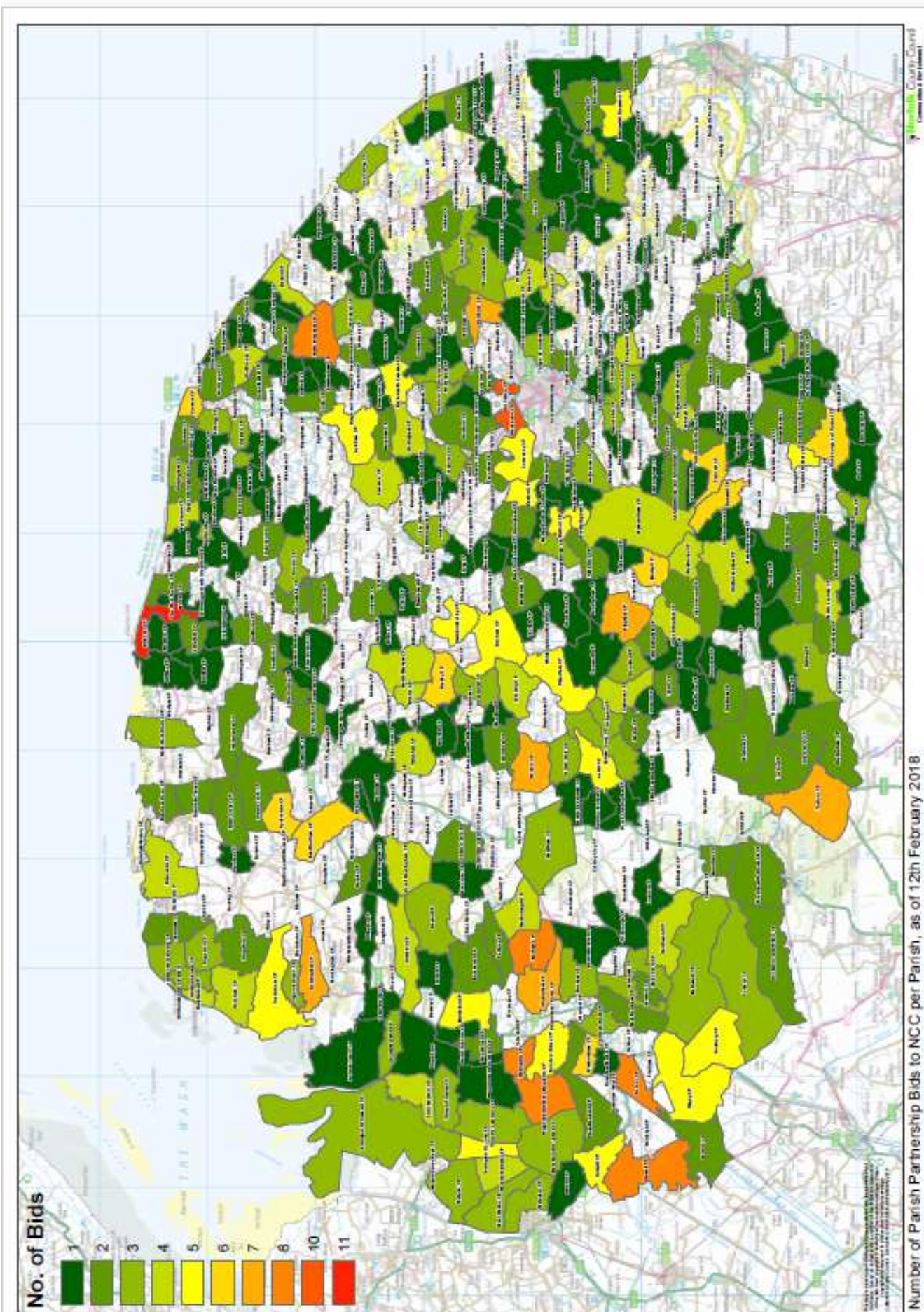
	Parish	Member	Scheme Type	Value of Works	Overall Ranking Score (criteria as per letter to Parishes in Appendix A)
104	Hainford	Roper D	SAM2	£3,600	22.22
105	Hevingham	Roper D	Trod	£5,200	40.38
106	Dilham	Seward E	SAM2	£3,880	20.62
107	North Walsham	Seward E	Village Signs	£750	48.00
108	Bradwell	Smith C	Bus Shelter	£5,950	18.49
109	Burgh Castle	Smith C	Surfacing	£2,500	2.40
110	Carleton Rode	Spratt B	20mph Wig Wags	£3,417	23.41
111	Winfarthing	Spratt B	20mph Wig Wags	£8,201	9.76
112	Walpole Highway	Squire S	Lining	£275	290.91
113	Alpington with Yelverton	Stone B	SAM2	£3,667	21.82
114	Bergh Apton	Stone B	SAM2	£4,120	19.42
115	Rockland St Mary	Stone B	SAM2	£3,281	24.38
116	Alburgh	Stone M	SAM2	£6,250	12.80
117	Denton	Stone M	SAM2	£4,268	18.74
118	Ditchingham	Stone M	SAM2	£3,550	22.54
119	Haddiscoe	Stone M	SAM2	£3,328	24.04
120	Stockton	Stone M	Bus Shelter	£18,552	5.93
121	Wortwell	Stone M	SAM2	£3,150	25.40
122	Feltwell	Storey M	SAM2	£3,856	20.75
123	Hilgay	Storey M	Lining	£150	533.33
124	Northwold and Whittington	Storey M	Trod	£4,800	43.75
125	Northwold and Whittington	Storey M	SAM2	£3,950	20.25
126	Stoke Ferry	Storey M	Access	£275	472.73
127	Blakeney	Strong Dr	20mph Wig Wags	£2,951	27.11
128	Blakeney	Strong Dr	SAM2	£3,281	24.38
129	Wells Next the Sea	Strong Dr	Junction Improvement	£23,025	6.51

	Parish	Member	Scheme Type	Value of Works	Overall Ranking Score (criteria as per letter to Parishes in Appendix A)
130	Fleggburgh	Thirtle H	Signs	£1,684	21.38
131	Saxlingham Nethergate	Thomas A	SAM2	£3,289	24.32
132	Caister St Edmund	Thompson V	SAM2	£3,200	25.00
133	Framingham Earl	Thompson V	Verge Works	£5,098	4.71
134	Old Catton	Vincent K	Bus Shelter	£4,059	27.10





## APPENDIX C: Cumulative bids by Parish (February 2017)





## APPENDIX D: Cumulative bids and bid value by District (February 2017)

